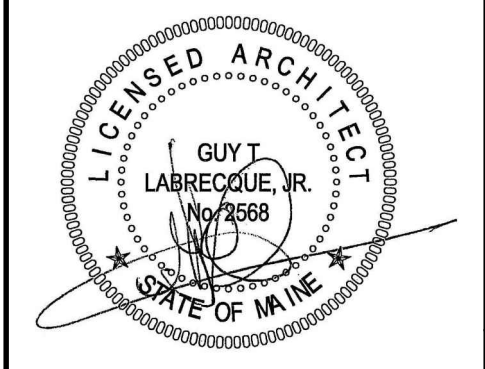
 = LIMITS OF ALTERNATE NO. 1:
 HATCH INDICATES LIMIT OF WORK ASSOCIATED WITH CREATING A 1-HOUR FIRE ENCLOSURE AROUND CORRIDOR. REFERENCE SPECIFICATIONS AND TITLE PAGE FOR FURTHER INFORMATION.

GAS LINE INSTALLATION COORDINATION:
 CUT, PATCH AND REPAIR EXISTING FINISHES AS REQUIRED FOR NEW GAS LINE INSTALLATION INCLUDING THE FOLLOWING:
 REMOVE AND REINSTALL EXISTING ACT CEILING ASSEMBLY, INCLUDING BUT NOT LIMITED TO ACT CEILING TILE, GRID ASSEMBLY AND TIES, LIGHT FIXTURES, CEILING MOUNTED ELECTRICAL AND MECHANICAL DEVICES, HVAC SYSTEM COMPONENTS AND FIRE ALARM DEVICES, ETC.
 REMOVE, REPLACE, PATCH AND REPAIR EXISTING WALL ASSEMBLIES AS REQUIRED TO MATCH EXISTING FINISHES.
 REPLACE, PATCH AND REPAIR ANY AND ALL FINISHES TO MATCH EXISTING FINISHES DAMAGED DURING THE REMOVALS PROCESS.

A1 OVERALL REMOVALS PLAN
 REFERENCED FROM: SCALE: 1/8"=1'-0"



CWS Architects

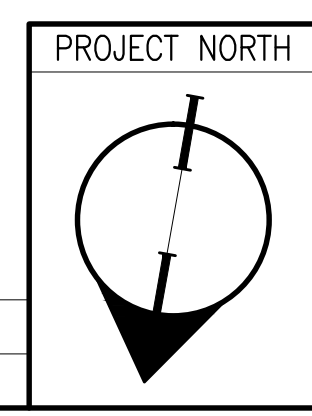


OWNER / DEVELOPER
164 REALTY, LLC
 100 SILVER STREET
 PORTLAND, ME 04101

PROJECT TITLE
NEPHROLOGY ASSOCIATES RENOVATIONS
 1600 CONGRESS STREET
 PORTLAND, MAINE 04101

DRAWING TITLE
OVERALL REMOVALS PLAN
 CWS PROJ. NO.: 11422

REVISION DESCRIPTION	DATE



DRAWING NUMBER

AD1.00

SCALE: 1/8"=1'-0"
 DATE: 12/22/11

ISSUED FOR CONSTRUCTION