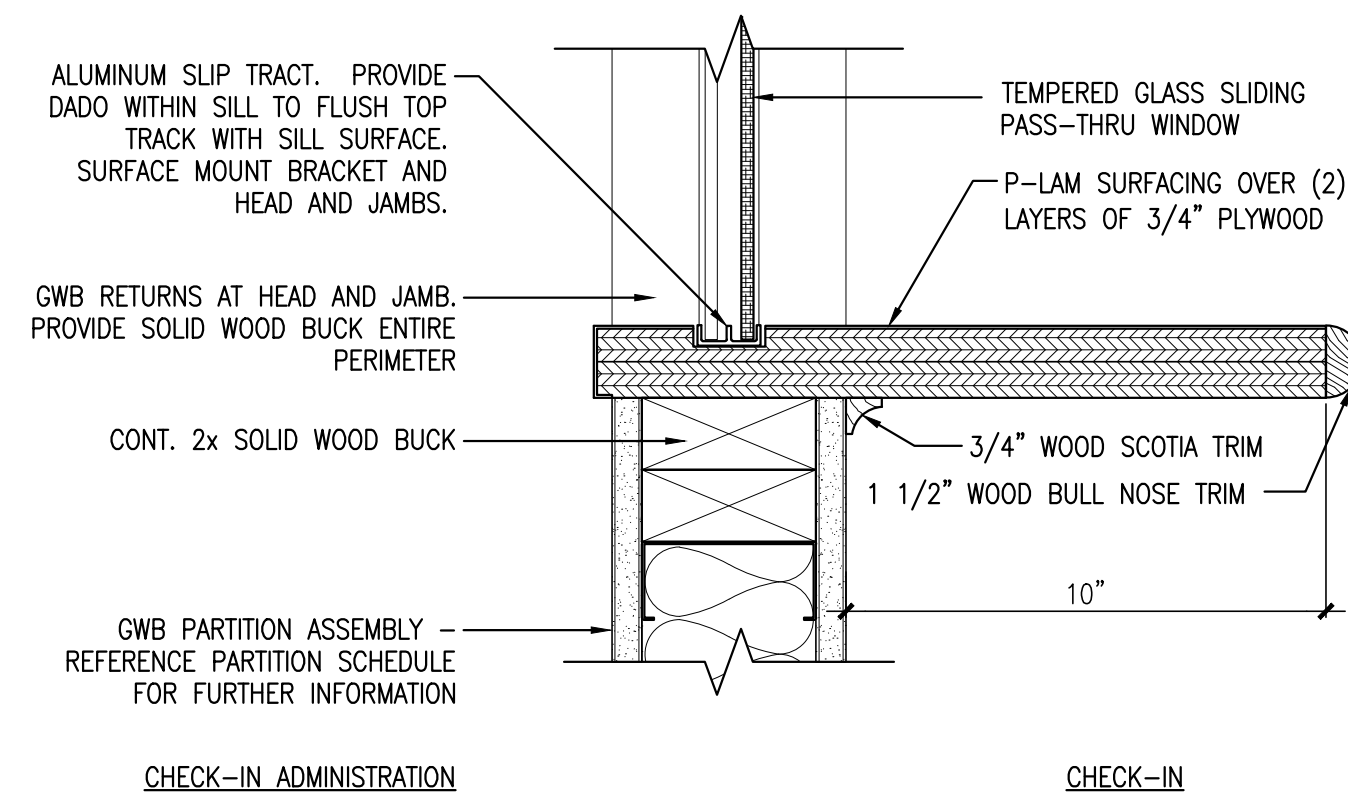
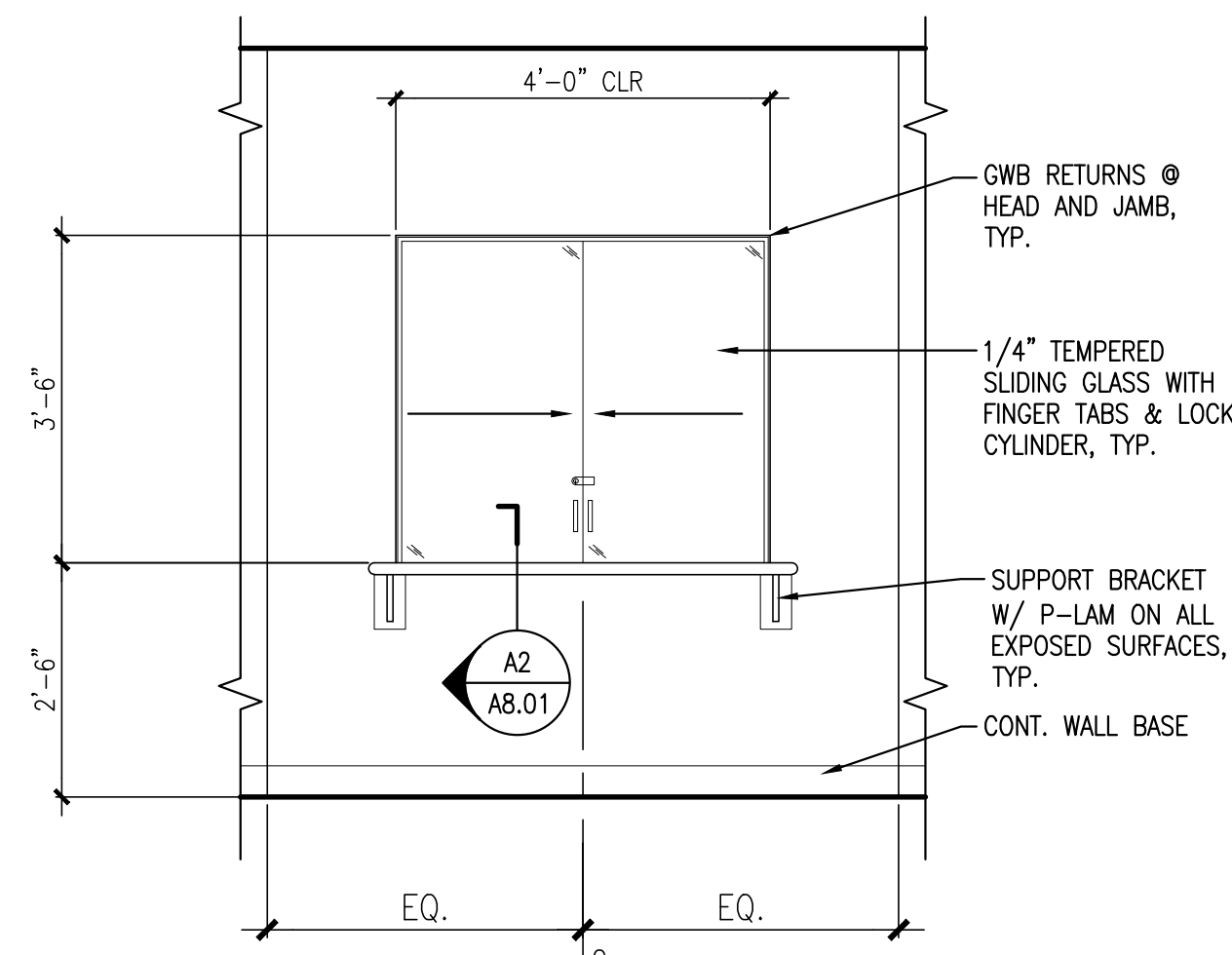


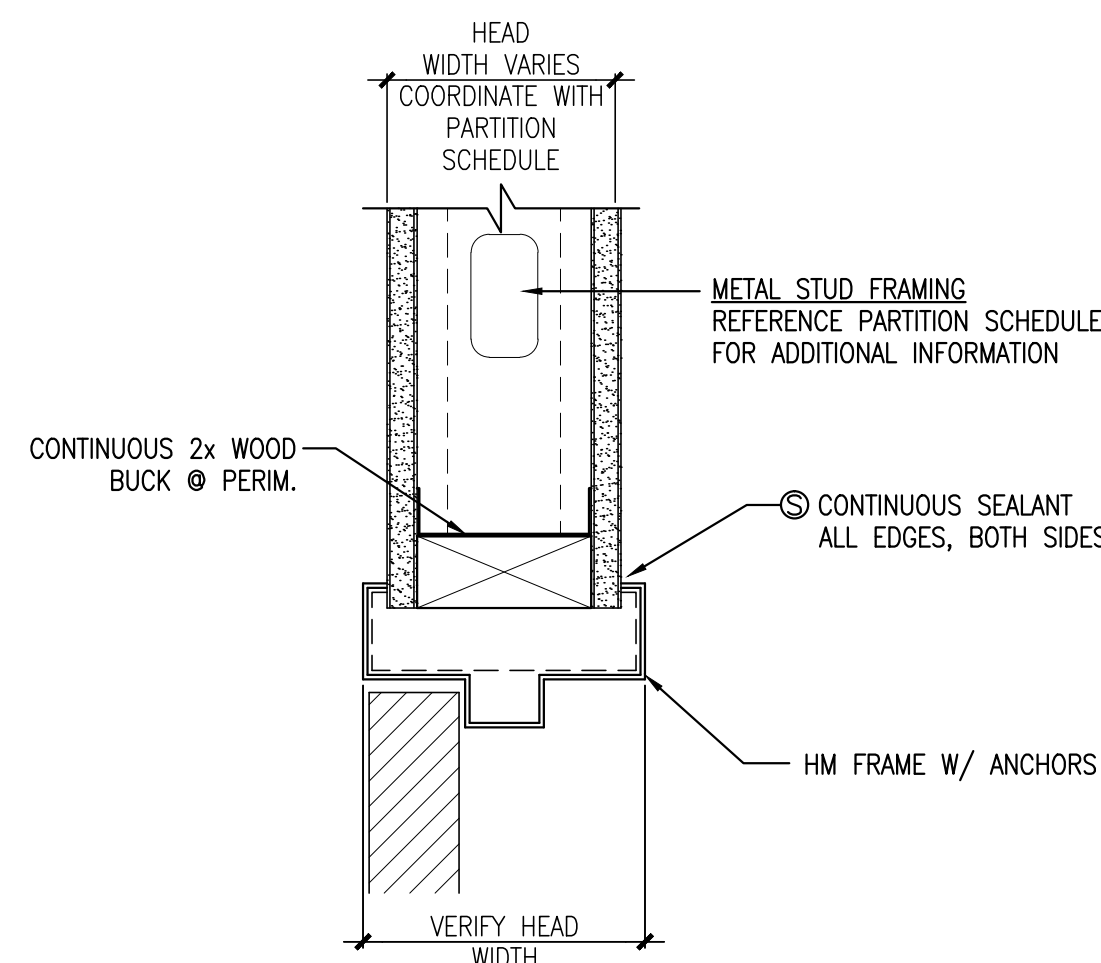
REFERENCE ALTERNATE NO. 5



**A2** TYP. CHECK-IN / CHECK-OUT WINDOW COUNTERTOP DETAIL  
REFERENCED FROM: SCALE: 1/2" = 1'-0"

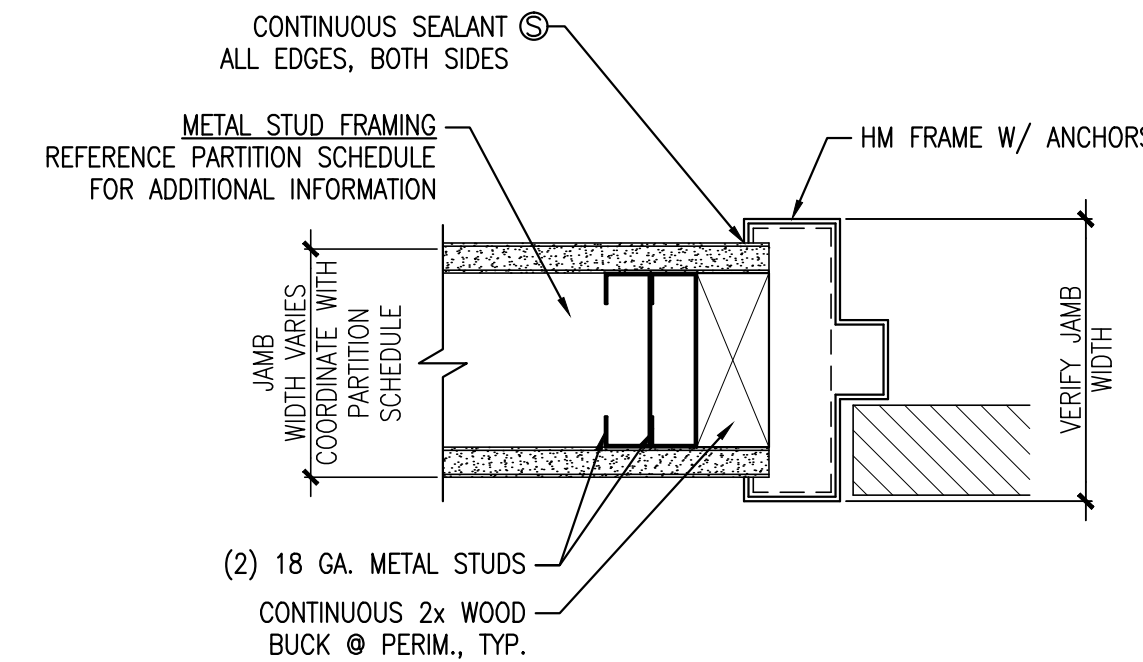


**A4** TYPICAL DETAIL @ ALL CHECK-IN AND CHECK-OUT WINDOWS  
REFERENCED FROM: SCALE: 1/2" = 1'-0"



**A5** TYPICAL HEAD DETAIL @ DOOR FRAME ASSEMBLY  
REFERENCED FROM: SCALE: 3" = 1'-0"

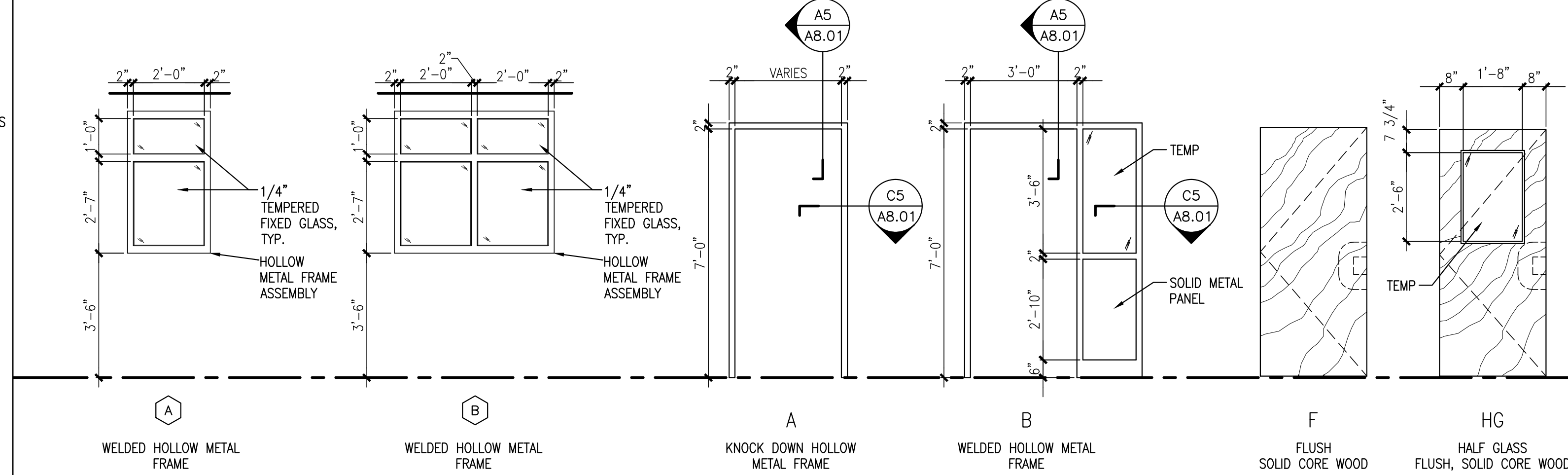
**C4** DOOR AND DOOR FRAME SCHEDULE  
REFERENCED FROM: SCALE: N/A



**C5** TYPICAL JAMB DETAIL @ DOOR FRAME ASSEMBLY  
REFERENCED FROM: SCALE: 3" = 1'-0"

**DOOR & DOOR FRAME SCHEDULE**

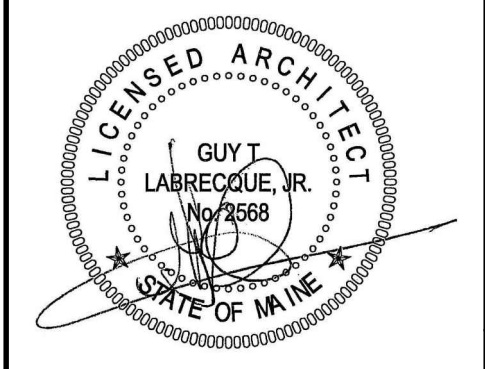
DOOR NO.	ROOM NO.	HWDR SET NO.	DOOR				FRAME				FIRE RATING	REMARKS
			SIZE	MAT	TYPE	MAT	TYPE	HEAD	JAMB	SILL		
100A	100	HEADING #1	EXISTING TO REMAIN	EXIST	-	EXIST	-	-	-	-	-	REPLACE EXISTING LOCK CYLINDER WITH NEW
100B	100	HEADING #1	EXISTING TO REMAIN	EXIST	-	EXIST	-	-	-	-	-	REPLACE EXISTING LOCK CYLINDER WITH NEW
102	102	HEADING #2	3'-0" x 7'-0" x 1 3/4"	SCW	HG	HM	A	A5/A8.01	C5/A8.01	-	-	
103	103	HEADING #2	3'-0" x 7'-0" x 1 3/4"	SCW	F	HM	A	A5/A8.01	C5/A8.01	-	-	
105	105	HEADING #3	3'-0" x 7'-0" x 1 3/4"	SCW	HG	HM	A	A5/A8.01	C5/A8.01	-	-	
106	106	HEADING #4	(PAIR) 2'-6" x 7'-0" x 1 3/4"	SCW	(2) F	HM	A	A5/A8.01	C5/A8.01	-	-	
107	107	HEADING #4	(PAIR) 2'-6" x 7'-0" x 1 3/4"	SCW	(2) F	HM	A	A5/A8.01	C5/A8.01	-	-	
109	109	HEADING #5	3'-0" x 7'-0" x 1 3/4"	SCW	F	HM	A	A5/A8.01	C5/A8.01	-	-	
110	110		(SLIDING PAIR) 3'-0" x 7'-0" x 1 3/4"	SCW	(2) F					-	-	PROVIDE COMPLETE W/ GUIDERAILS AND DOOR PULLS
111	111	HEADING #1	EXISTING TO REMAIN	EXIST	-	EXIST	-	-	-	-	-	REPLACE EXISTING LOCK CYLINDER WITH NEW
112	112	HEADING #4	3'-0" x 7'-0" x 1 3/4"	SCW	F	HM	A	A5/A8.01	C5/A8.01	-	-	
113	113		EXISTING TO REMAIN	EXIST	-	EXIST	-	-	-	-	-	
114	114	HEADING #2	3'-0" x 7'-0" x 1 3/4"	SCW	F	HM	A	A5/A8.01	C5/A8.01	-	-	
115	115	HEADING #2	3'-0" x 7'-0" x 1 3/4"	SCW	F	HM	A	A5/A8.01	C5/A8.01	-	-	
116	116	HEADING #2	3'-0" x 7'-0" x 1 3/4"	SCW	F	HM	A	A5/A8.01	C5/A8.01	-	-	
117	117	HEADING #6	3'-0" x 7'-0" x 1 3/4"	SCW	F	HM	A	A5/A8.01	C5/A8.01	-	-	
118	118	HEADING #6	3'-0" x 7'-0" x 1 3/4"	SCW	F	HM	A	A5/A8.01	C5/A8.01	-	-	
120	120	HEADING #4	3'-0" x 7'-0" x 1 3/4"	SCW	F	HM	A	A5/A8.01	C5/A8.01	-	-	
121	121	HEADING #2	3'-0" x 7'-0" x 1 3/4"	SCW	F	HM	A	A5/A8.01	C5/A8.01	-	-	
122	122	HEADING #3	3'-0" x 7'-0" x 1 3/4"	SCW	F	HM	A	A5/A8.01	C5/A8.01	-	-	
123	123	HEADING #6	3'-0" x 7'-0" x 1 3/4"	SCW	F	HM	A	A5/A8.01	C5/A8.01	-	-	
124	124	HEADING #9	3'-0" x 7'-0" x 1 3/4"	SCW	F	HM	A	A5/A8.01	C5/A8.01	-	45 MIN.	
126	126	HEADING #7	3'-0" x 7'-0" x 1 3/4"	SCW	HG	HM	A	A5/A8.01	C5/A8.01	-	-	
127	127	HEADING #2	3'-0" x 7'-0" x 1 3/4"	SCW	F	HM	A	A5/A8.01	C5/A8.01	-	-	
129	129	HEADING #6	3'-0" x 7'-0" x 1 3/4"	SCW	F	HM	A	A5/A8.01	C5/A8.01	-	-	
130	130	HEADING #6	3'-0" x 7'-0" x 1 3/4"	SCW	F	HM	A	A5/A8.01	C5/A8.01	-	-	
131	131	HEADING #6	3'-0" x 7'-0" x 1 3/4"	SCW	F	HM	A	A5/A8.01	C5/A8.01	-	-	
132	132	HEADING #6	3'-0" x 7'-0" x 1 3/4"	SCW	F	HM	A	A5/A8.01	C5/A8.01	-	-	
133	133	HEADING #6	3'-0" x 7'-0" x 1 3/4"	SCW	F	HM	A	A5/A8.01	C5/A8.01	-	-	
134	134	HEADING #6	3'-0" x 7'-0" x 1 3/4"	SCW	F	HM	A	A5/A8.01	C5/A8.01	-	-	
135	135	HEADING #6	3'-0" x 7'-0" x 1 3/4"	SCW	F	HM	A	A5/A8.01	C5/A8.01	-	-	
136	136	HEADING #6	3'-0" x 7'-0" x 1 3/4"	SCW	F	HM	A	A5/A8.01	C5/A8.01	-	-	
137	137	HEADING #6	3'-0" x 7'-0" x 1 3/4"	SCW	F	HM	A	A5/A8.01	C5/A8.01	-	-	
138	138	HEADING #6	3'-0" x 7'-0" x 1 3/4"	SCW	F	HM	A	A5/A8.01	C5/A8.01	-	-	
139	139	HEADING #6	3'-0" x 7'-0" x 1 3/4"	SCW	F	HM	A	A5/A8.01	C5/A8.01	-	-	
140	140	HEADING #6	3'-0" x 7'-0" x 1 3/4"	SCW	F	HM	A	A5/A8.01	C5/A8.01	-	-	
141A	141	HEADING #6	3'-0" x 7'-0" x 1 3/4"	SCW	F	HM	A	A5/A8.01	C5/A8.01	-	-	
141B	141	HEADING #6	3'-0" x 7'-0" x 1 3/4"	SCW	F	HM	A	A5/A8.01	C5/A8.01	-	-	
143	143	HEADING #5	3'-0" x 7'-0" x 1 3/4"	SCW	F	HM	A	A5/A8.01	C5/A8.01	-	45 MIN.	
146A	146	HEADING #8	(BI-FOLD) 7'-0" x 7'-0" x 1 3/4"	SCW	F					-	-	PROVIDE COMPLETE W/ GUIDERAILS AND DOOR PULLS
146B	146	HEADING #8	(BI-FOLD) 7'-0" x 7'-0" x 1 3/4"	SCW	F					-	-	PROVIDE COMPLETE W/ GUIDERAILS AND DOOR PULLS
151A	151		EXISTING TO REMAIN	EXIST	-	EXIST	-	-	-	-	-	REPLACE EXISTING LOCK CYLINDER WITH NEW
151B	151		EXISTING TO REMAIN	EXIST	-	EXIST	-	-	-	-	-	REPLACE EXISTING LOCK CYLINDER WITH NEW
152A	152	HEADING #2	3'-0" x 7'-0" x 1 3/4"	SCW	F	HM	A	A5/A8.01	C5/A8.01	-	45 MIN.	
152B	152	HEADING #2	3'-0" x 7'-0" x 1 3/4"	SCW	F	HM	A	A5/A8.01	C5/A8.01	-	45 MIN.	
152C	152	HEADING #2	3'-0" x 7'-0" x 1 3/4"	SCW	F	HM	A	A5/A8.01	C5/A8.01	-	45 MIN.	
152D	152	HEADING #2	3'-0" x 7'-0" x 1 3/4"	SCW	F	HM	A	A5/A8.01	C5/A8.01	-	45 MIN.	
152E	152	HEADING #2	3'-0" x 7'-0" x 1 3/4"	SCW	F	HM	A	A5/A8.01	C5/A8.01	-	45 MIN.	
152F	152	HEADING #2	3'-0" x 7'-0" x 1 3/4"	SCW	F	HM	A	A5/A8.01	C5/A8.01	-	45 MIN.	
155	155	HEADING #3	3'-0" x 7'-0" x 1 3/4"	SCW	F	HM	A	A5/A8.01	C5/A8.01	-	-	



**E5** DOOR AND DOOR FRAME ELEVATIONS  
REFERENCED FROM: SCALE: 3/8" = 1'-0"

**ABBREVIATIONS:**  
ALUM = ALUMINUM STOREFRONT  
EXIST = EXISTING  
HG = HALF GLASS  
HM = HOLLOW METAL  
SCW = SOLID CORE WOOD

**GENERAL NOTES:**  
1. ALL GLAZING SHALL BE TEMPERED GLASS UNLESS NOTED OTHERWISE.  
2. INSTALLATION TO BE COMPLETED IN ACCORDANCE WITH MANUFACTURER'S SPECIFICATIONS.



OWNER / DEVELOPER  
**164 REALTY, LLC**  
100 SILVER STREET  
PORTLAND, ME 04101

PROJECT TITLE  
**NEPHROLOGY ASSOCIATES RENOVATIONS**  
1600 CONGRESS STREET  
PORTLAND, MAINE 04101

DRAWING TITLE  
**DOOR & DOOR FRAME SCHEDULE, ELEVATIONS AND DETAILS**  
CWS PROJ. NO.: 11422

REVISION DESCRIPTION	DATE

DRAWING NUMBER  
**A8.01**

SCALE: AS NOTED  
DATE: 12/22/11