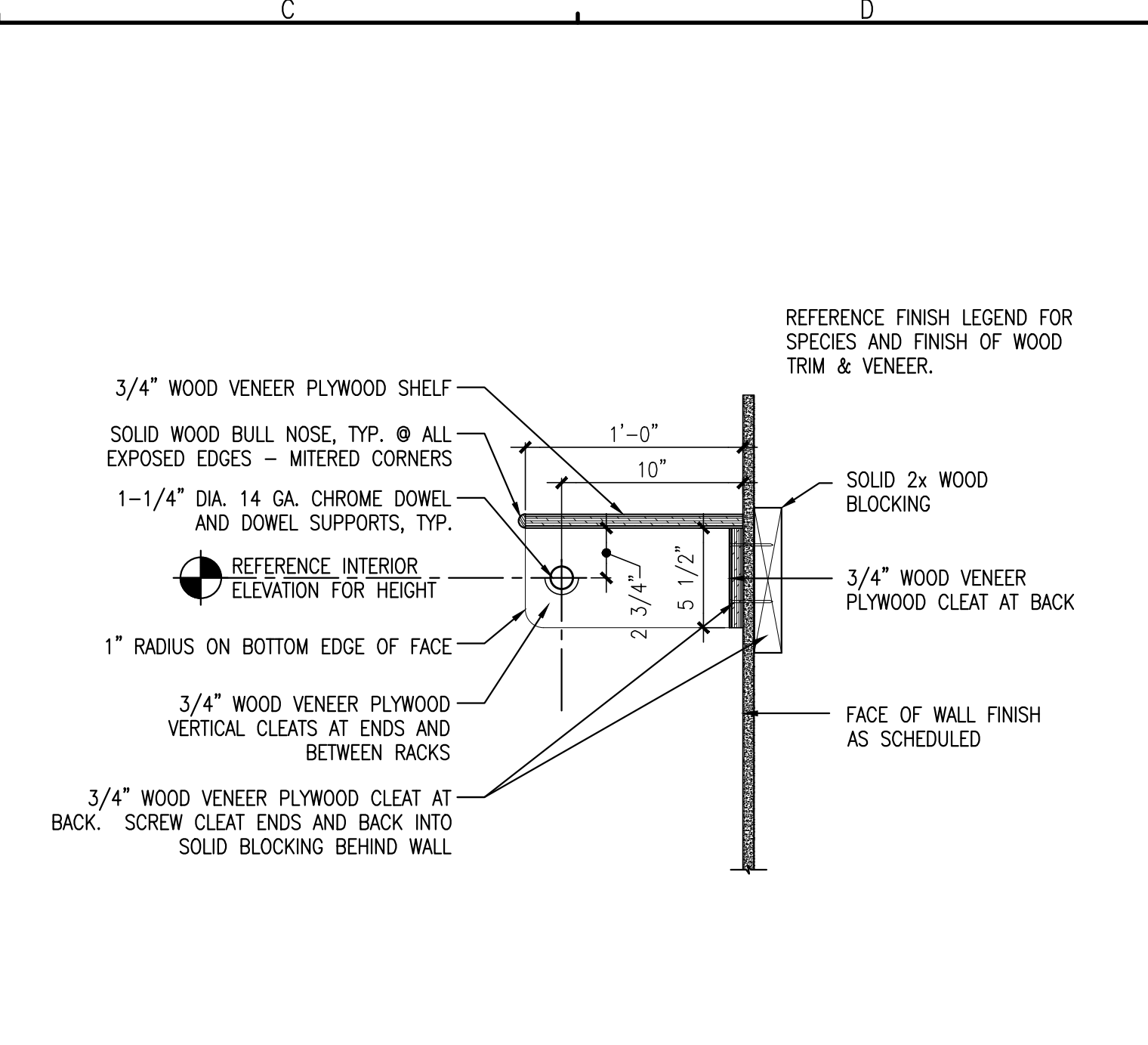
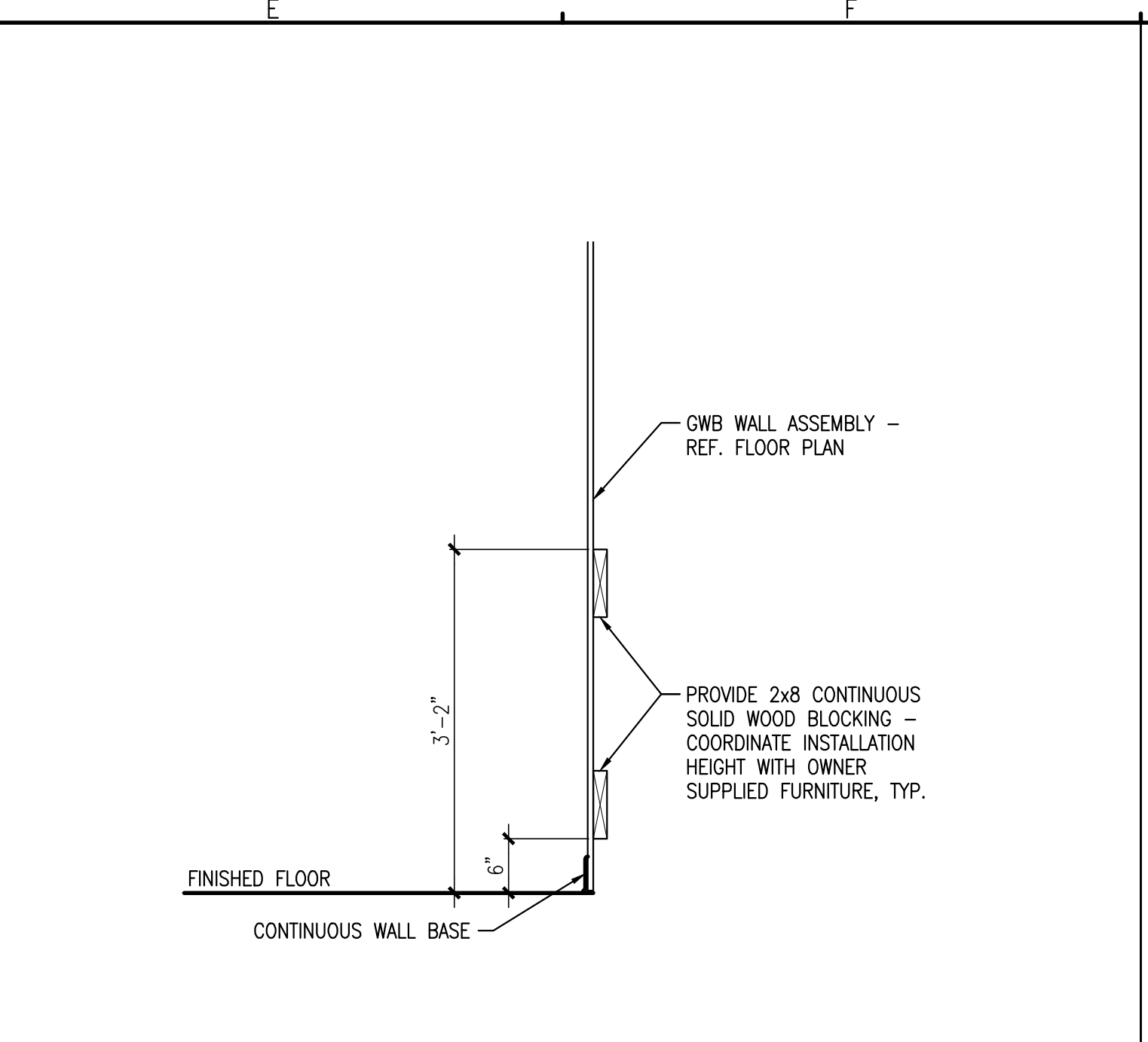


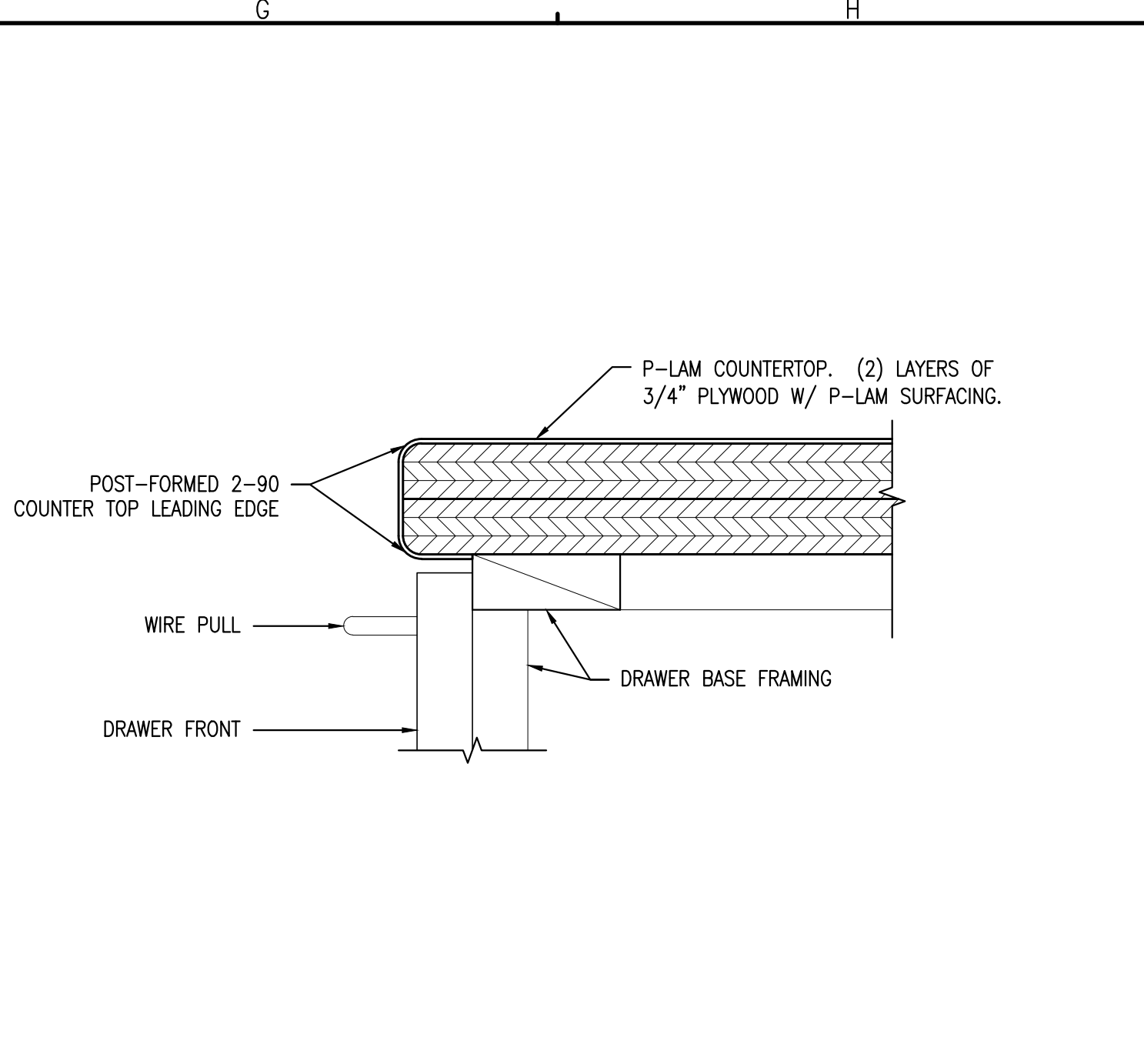
A2 PLAN AND SECTION DETAILS @ PARTIAL HEIGHT WALL ASSEMBLY
REFERENCED FROM: SCALE: 3" = 1'-0"



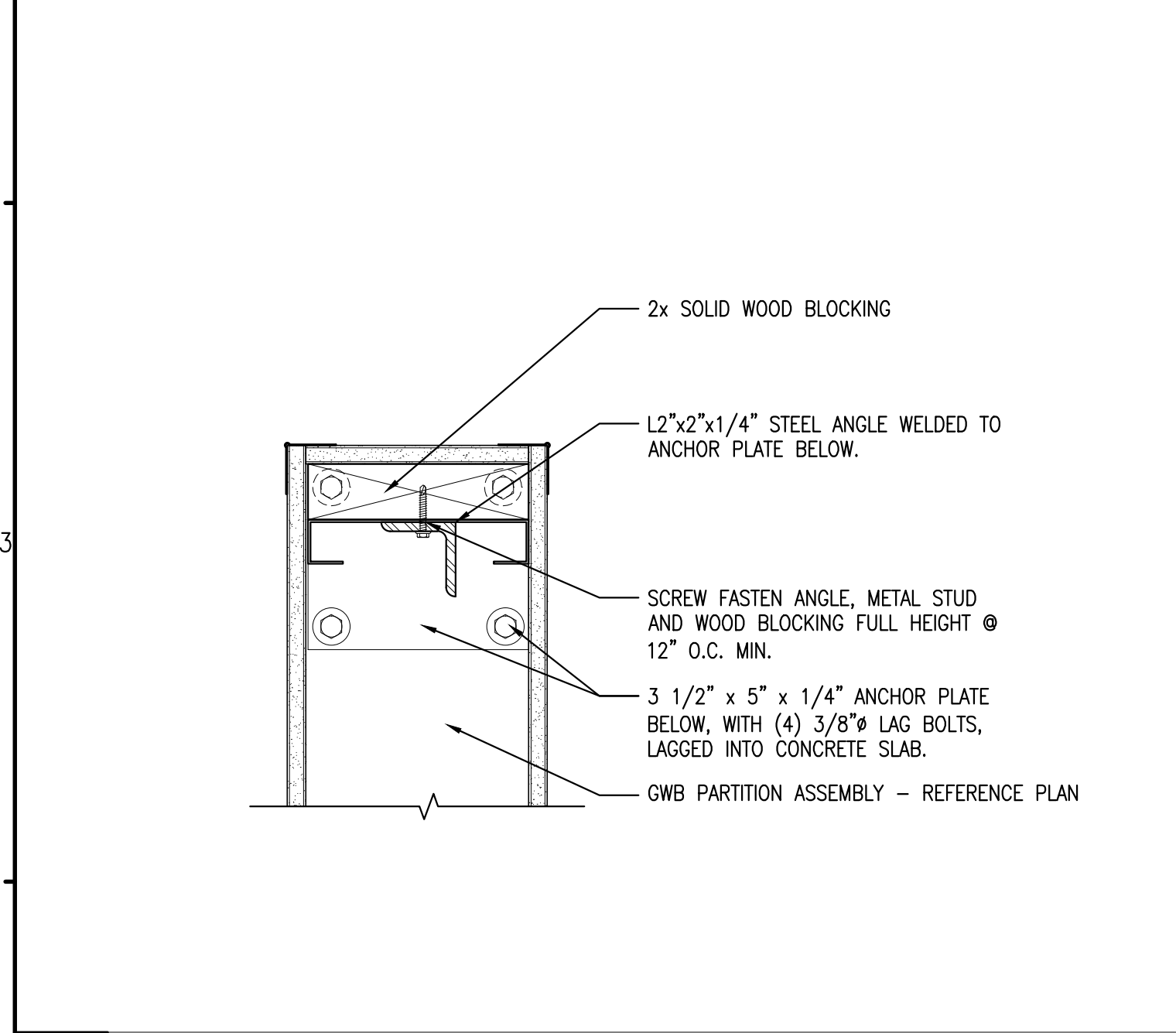
C2 SHELF AND HANGING ROD DETAIL @ STAFF COATS
REFERENCED FROM: SCALE: 3" = 1'-0"



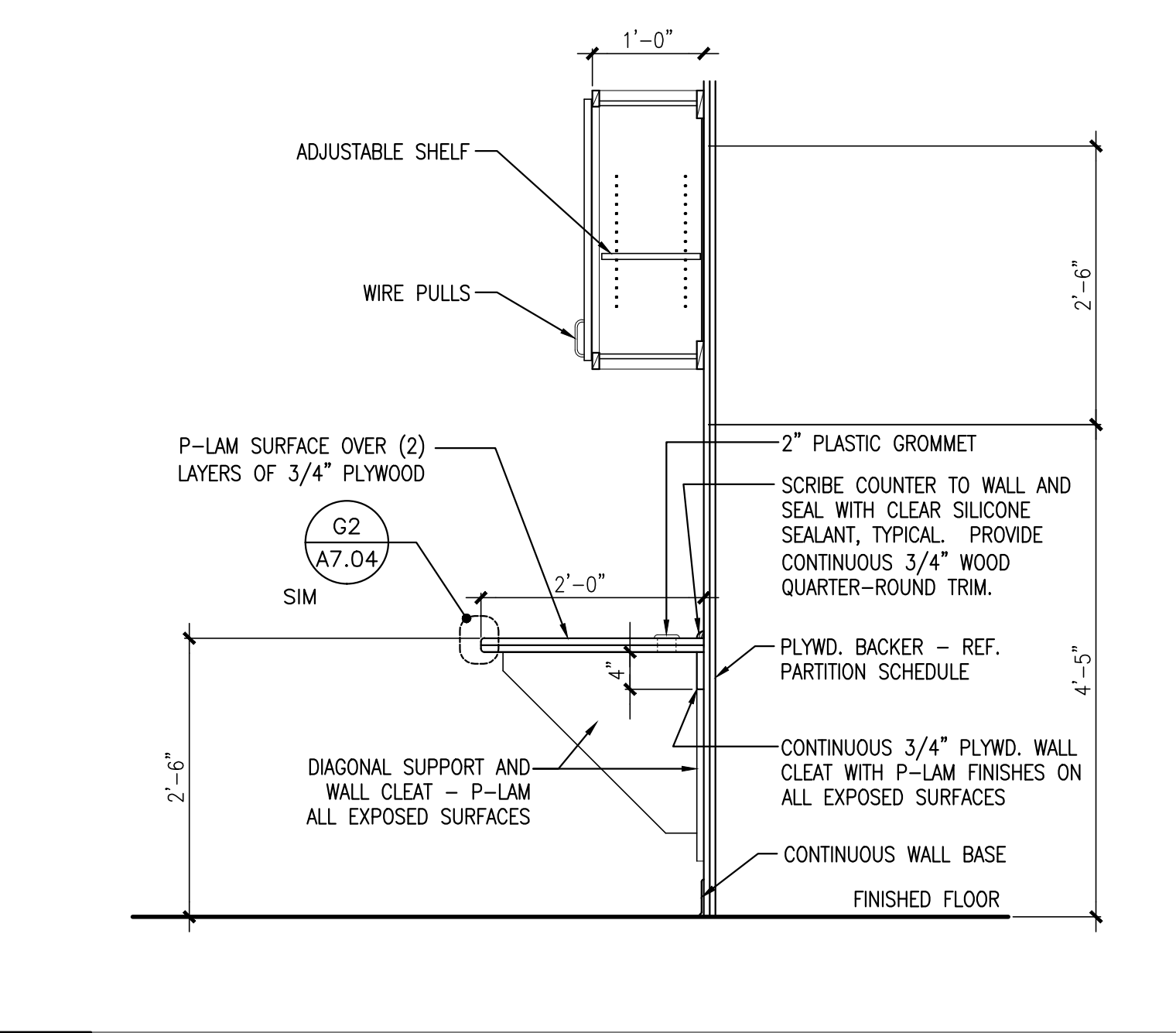
E2 BLOCKING DETAIL @ OWNER SUPPLIED FURNITURE
REFERENCED FROM: SCALE: 3" = 1'-0"



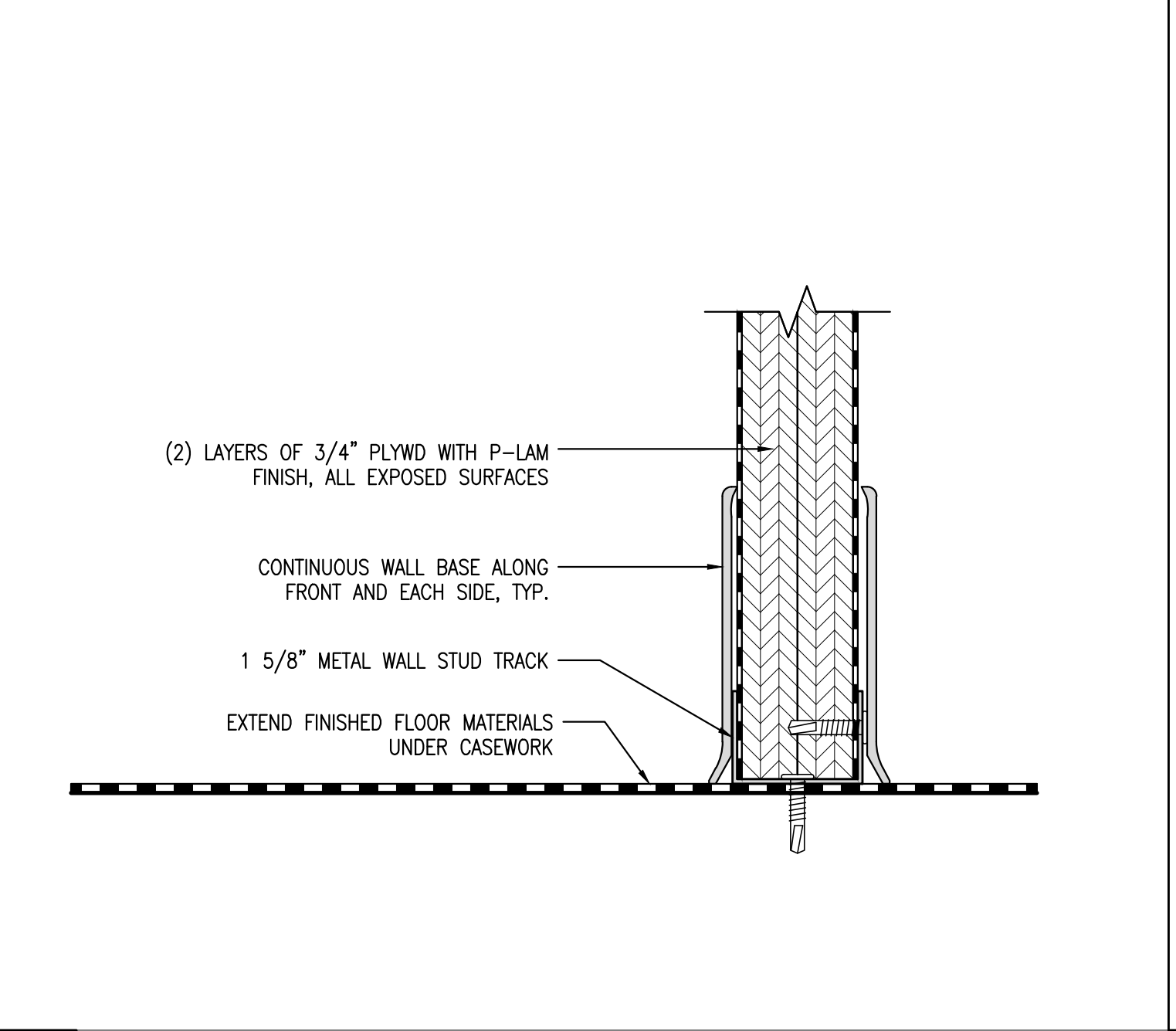
G2 TYPICAL COUNTERTOP EDGE DETAIL
REFERENCED FROM: SCALE: 3" = 1'-0"



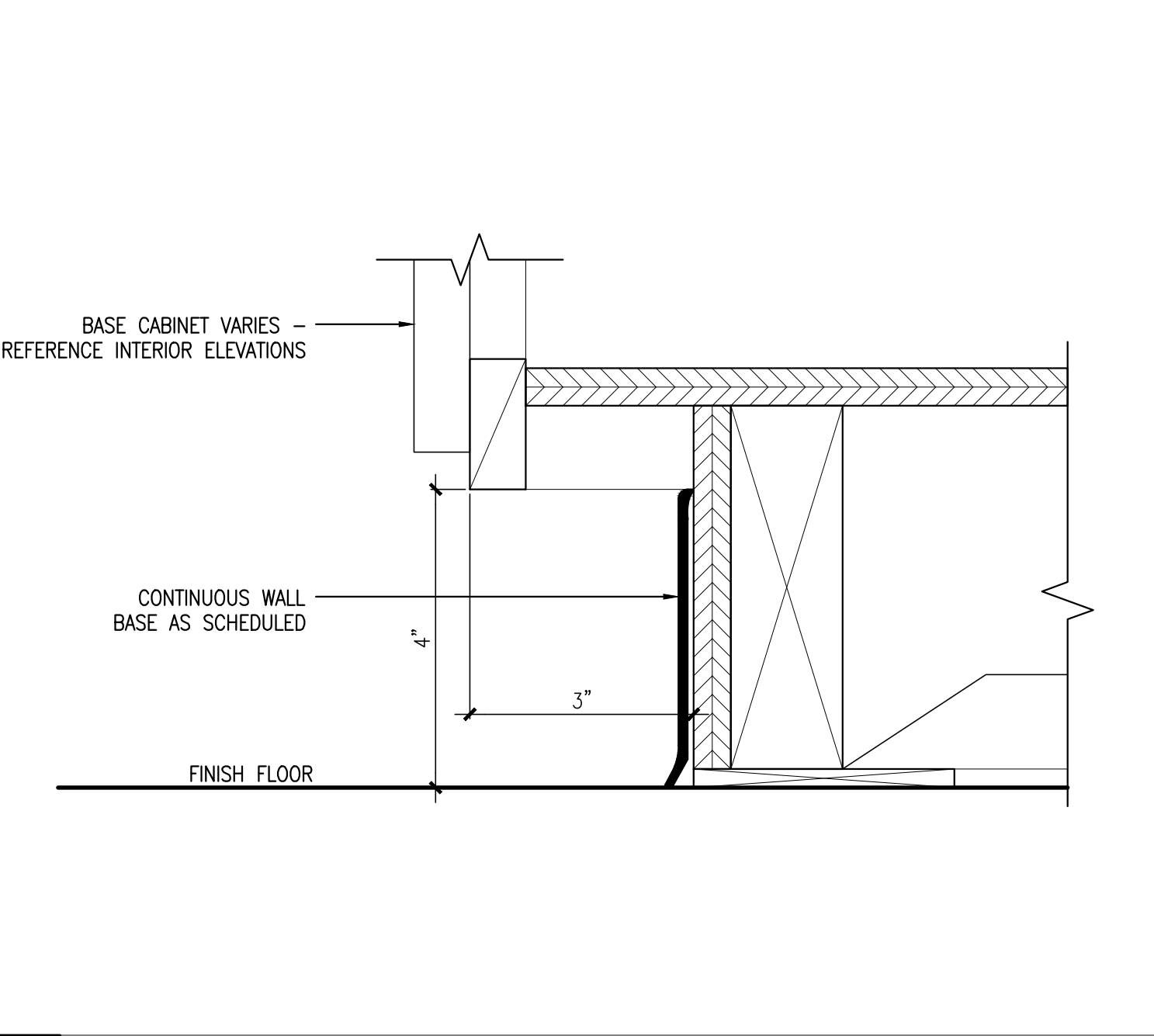
A4 PLAN DETAIL @ PARTIAL WALL VERTICAL SUPPORT
REFERENCED FROM: SCALE: 3" = 1'-0"



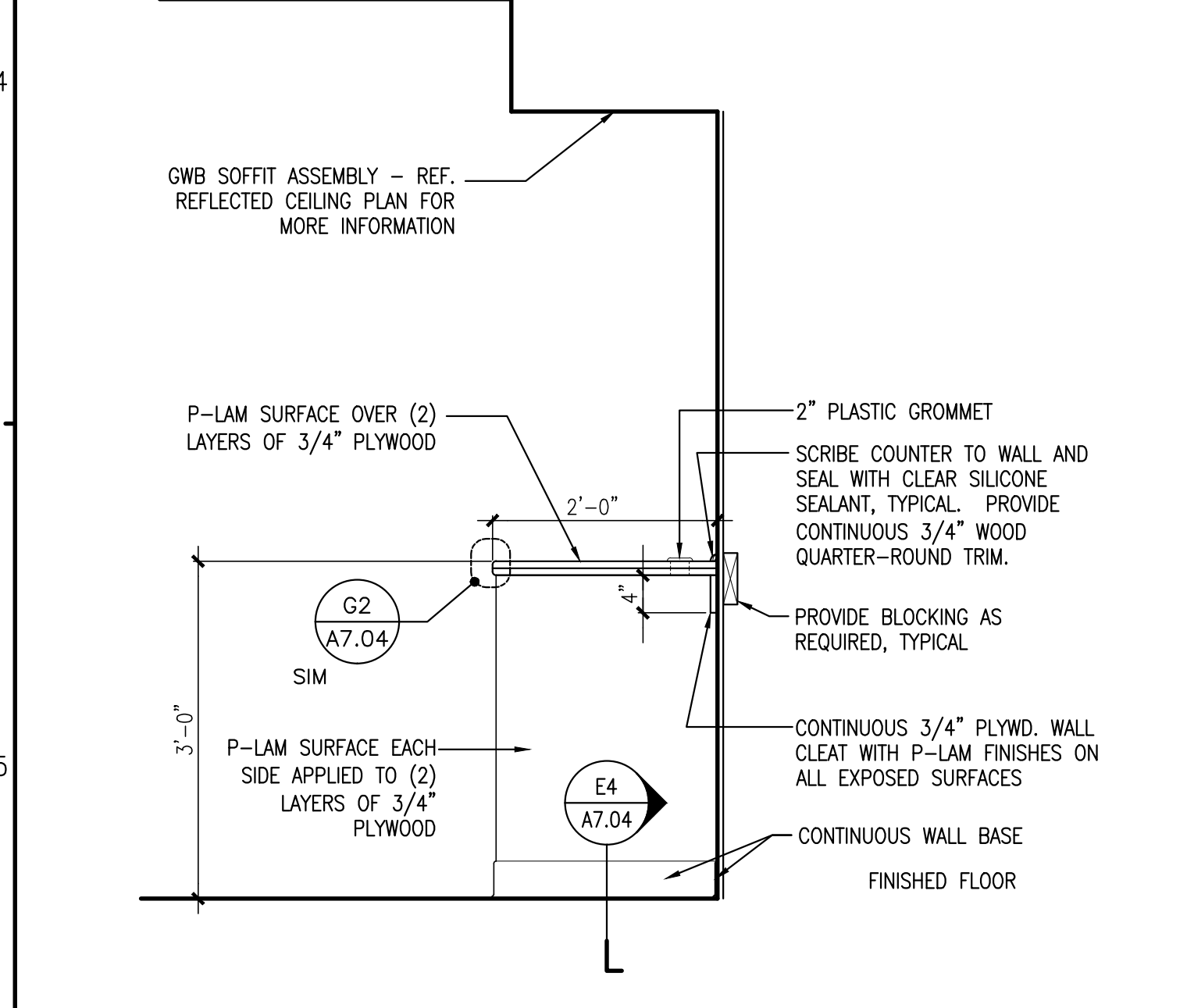
C4 COUNTERTOP (OPEN BELOW) WITH SHELVES ABOVE DETAIL
REFERENCED FROM: SCALE: 3" = 1'-0"



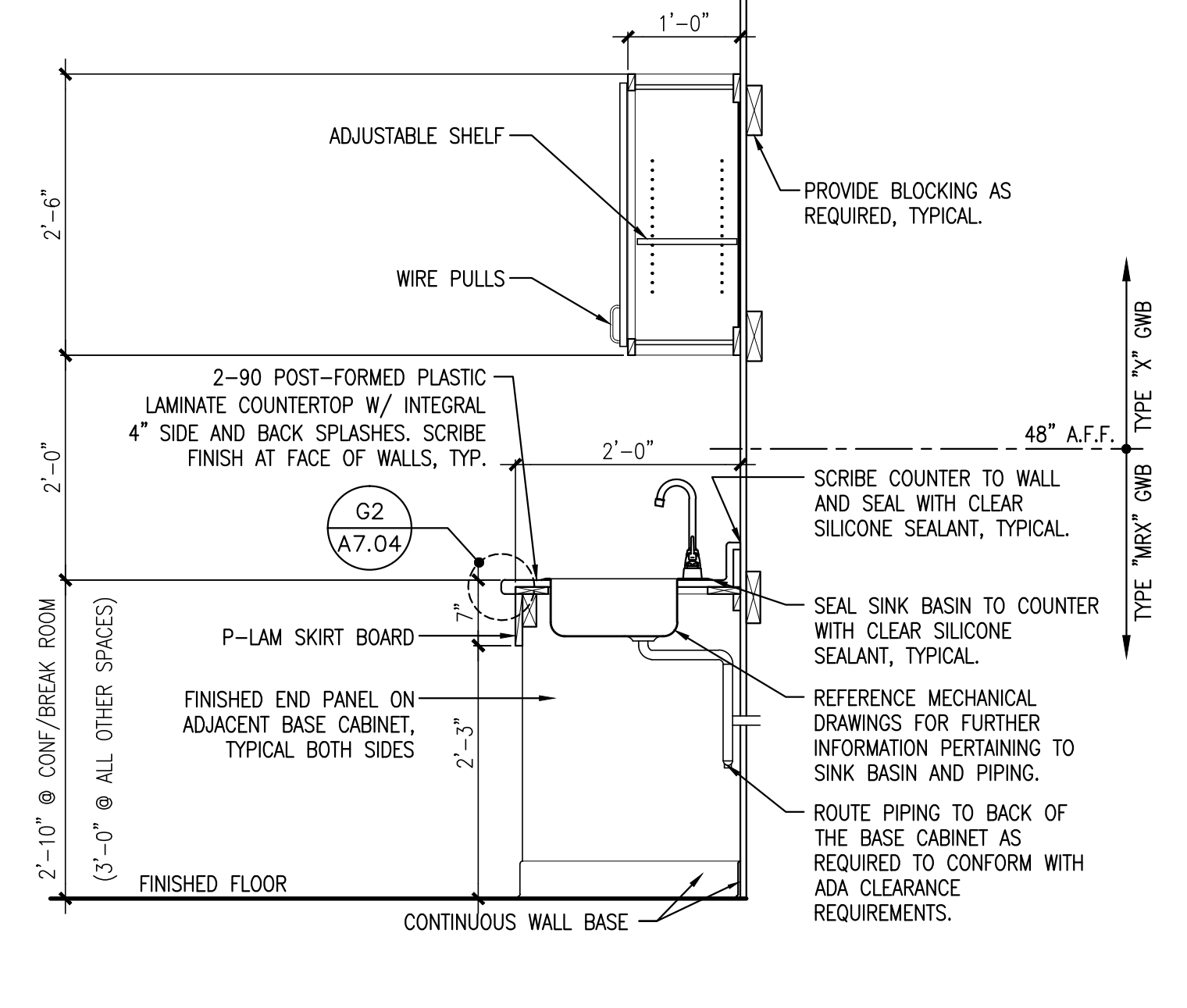
E4 P-LAM END PANEL BASE DETAIL
REFERENCED FROM: SCALE: 3" = 1'-0"



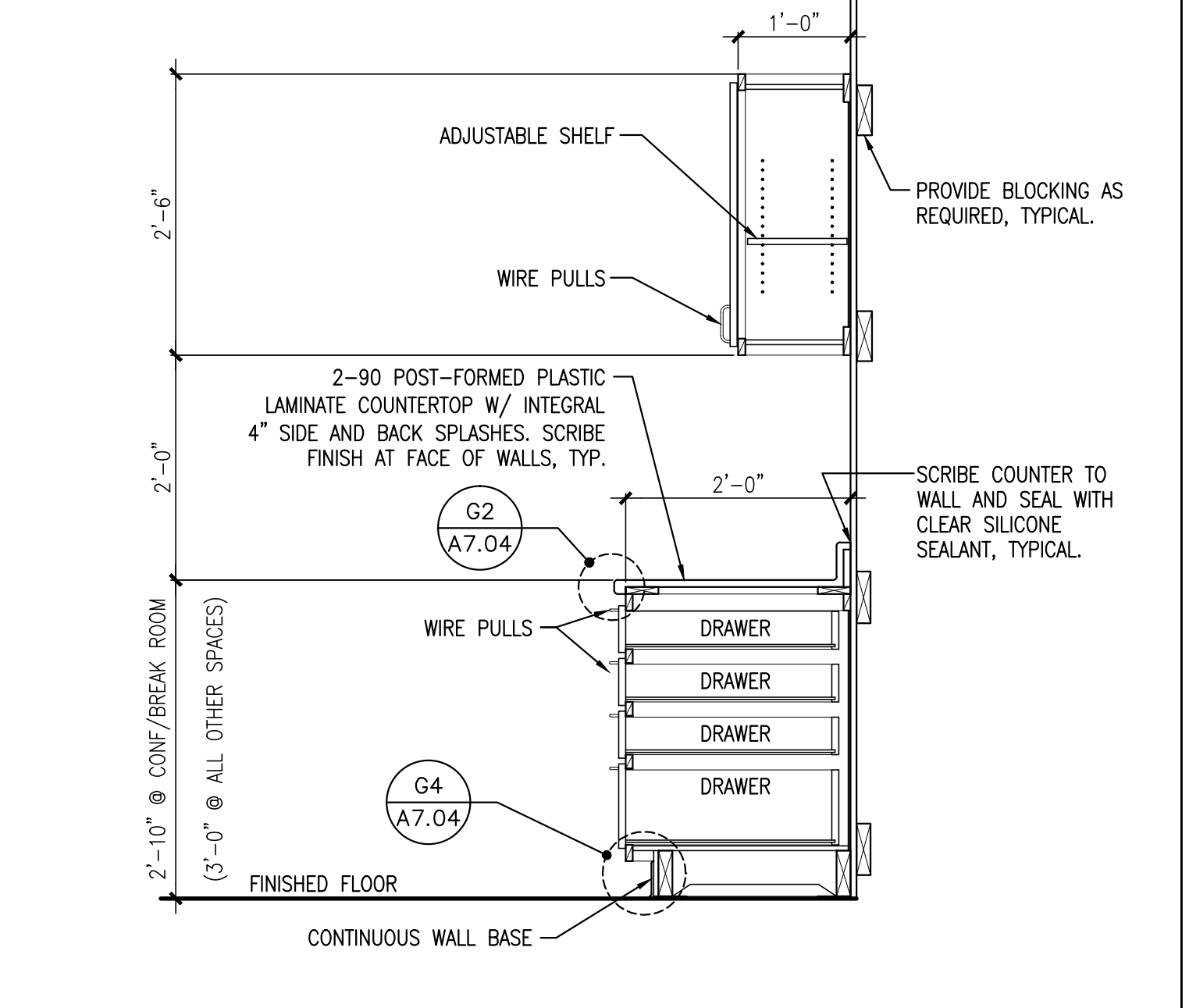
G4 TYPICAL BASE OF CABINET DETAIL
REFERENCED FROM: SCALE: 3" = 1'-0"



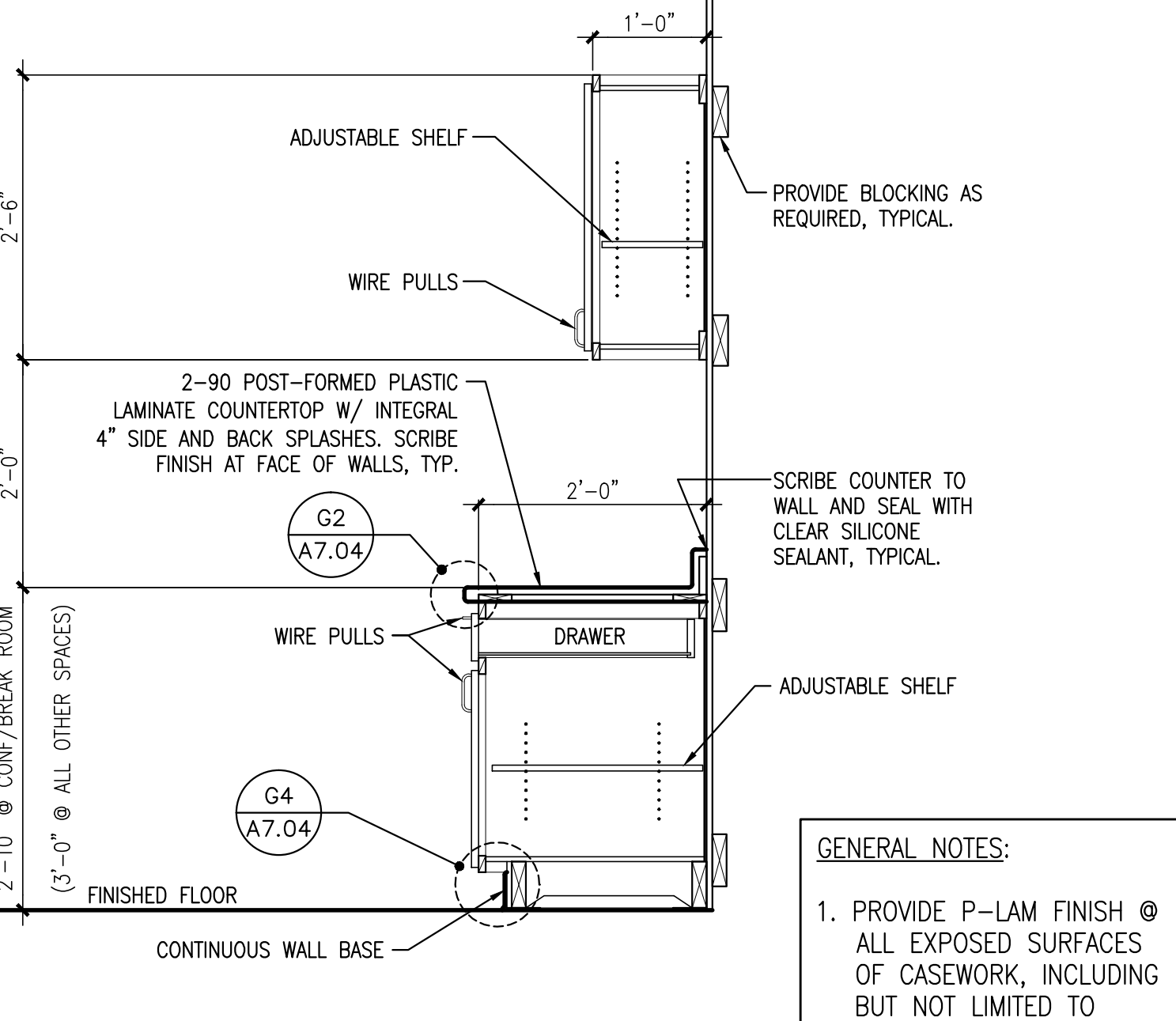
A5 COUNTERTOP (OPEN BELOW) DETAIL
REFERENCED FROM: SCALE: 3" = 1'-0"



C5 TYPICAL DETAIL @ SINK WITH WALL CABINET ABOVE
REFERENCED FROM: SCALE: 3" = 1'-0"



E5 TYPICAL DRAWER BASE AND WALL CABINET DETAIL
REFERENCED FROM: SCALE: 3/4" = 1'-0"



G5 TYPICAL BASE AND WALL CABINET DETAIL
REFERENCED FROM: SCALE: 3" = 1'-0"

GENERAL NOTES:
1. PROVIDE P-LAM FINISH @ ALL EXPOSED SURFACES OF CASEWORK, INCLUDING BUT NOT LIMITED TO CASEWORK ENDS.

OWNER / DEVELOPER
164 REALTY, LLC
100 SILVER STREET
PORTLAND, ME 04101

PROJECT TITLE
NEPHROLOGY ASSOCIATES RENOVATIONS
1600 CONGRESS STREET
PORTLAND, MAINE 04101

DRAWING TITLE
CASEWORK DETAILS
CWS PROJ. NO.: 11422

REVISION	DESCRIPTION	DATE

DRAWING NUMBER
A7.04
SCALE: AS NOTED
DATE: 12/22/11