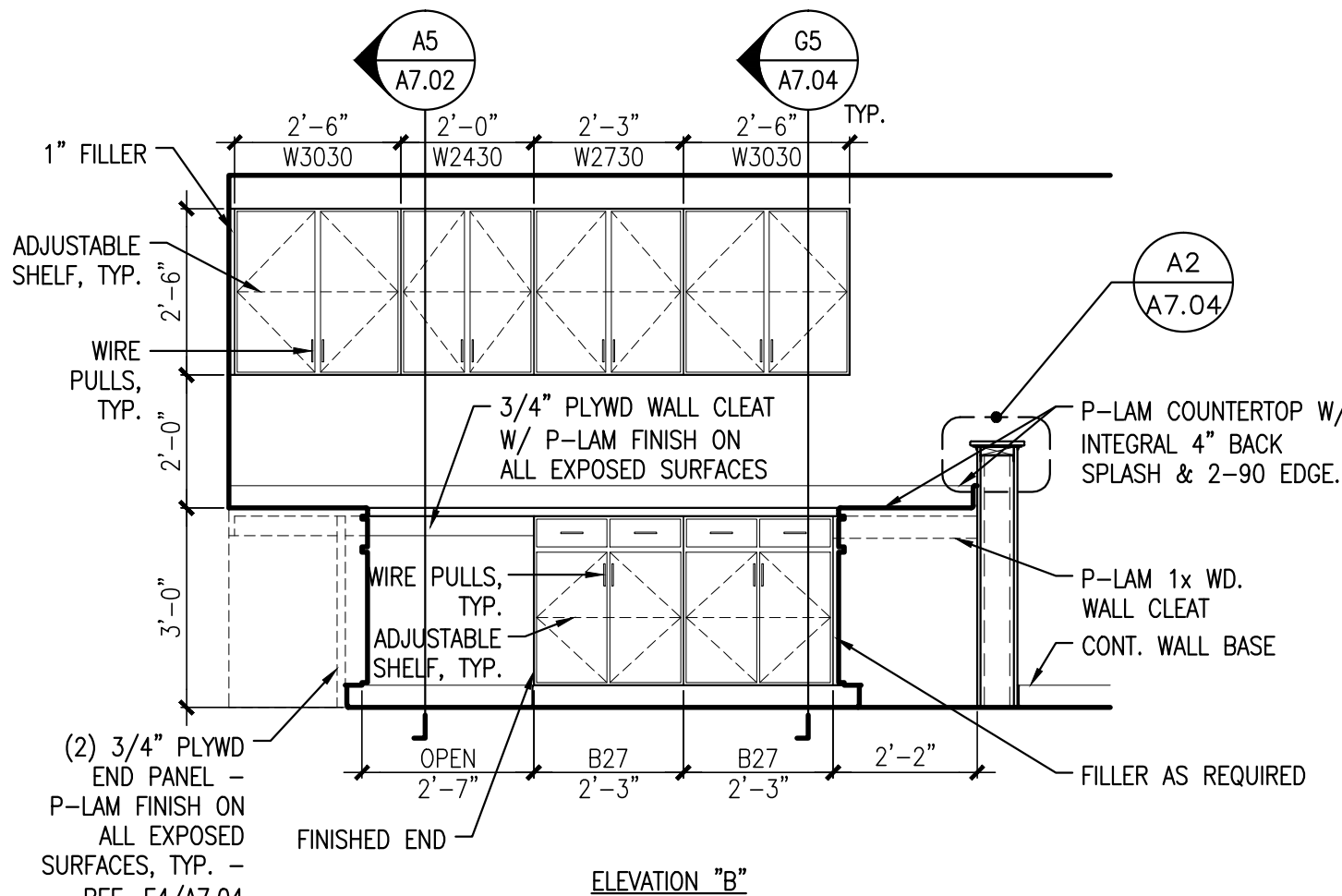
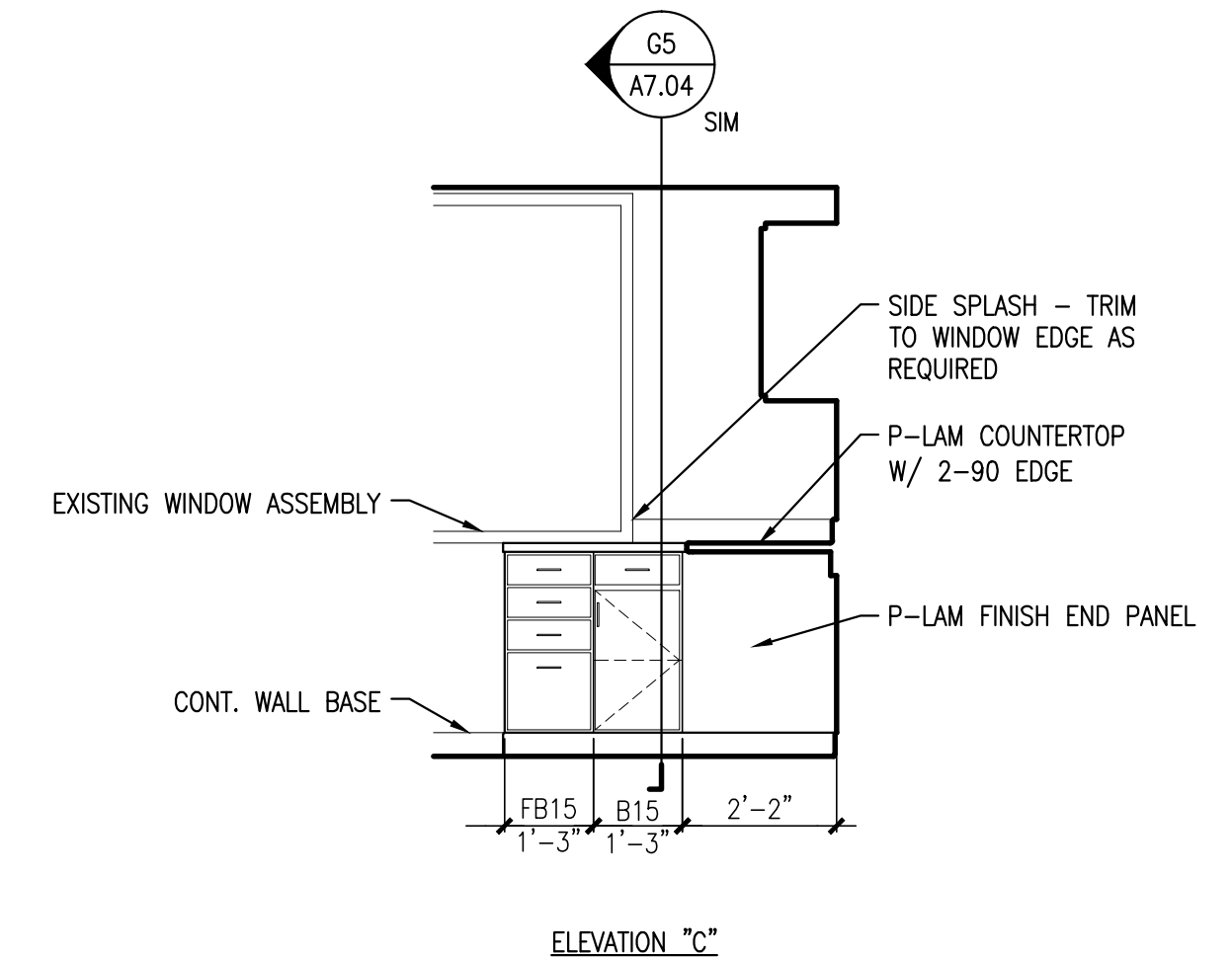


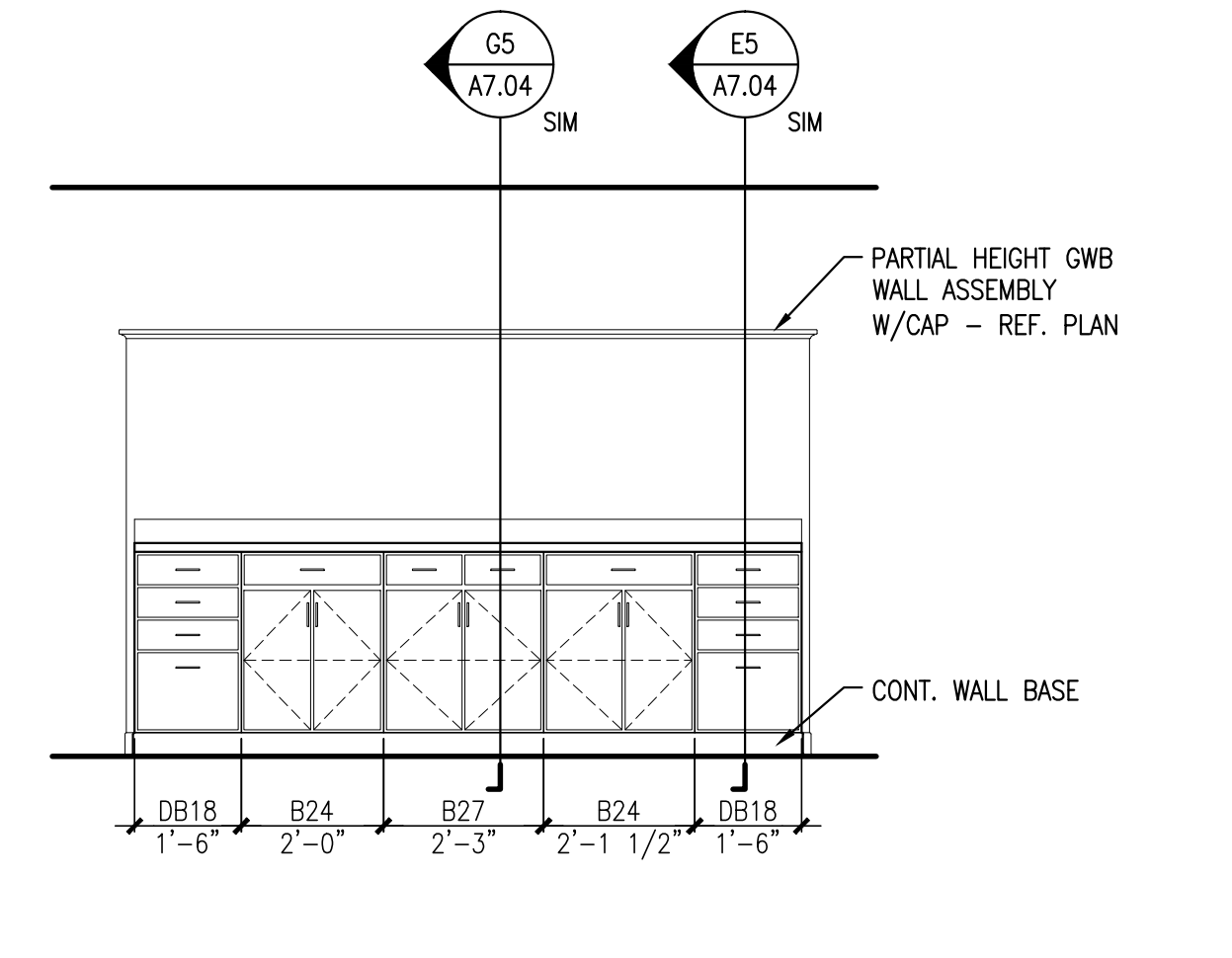
ELEVATION "A"



ELEVATION "B"



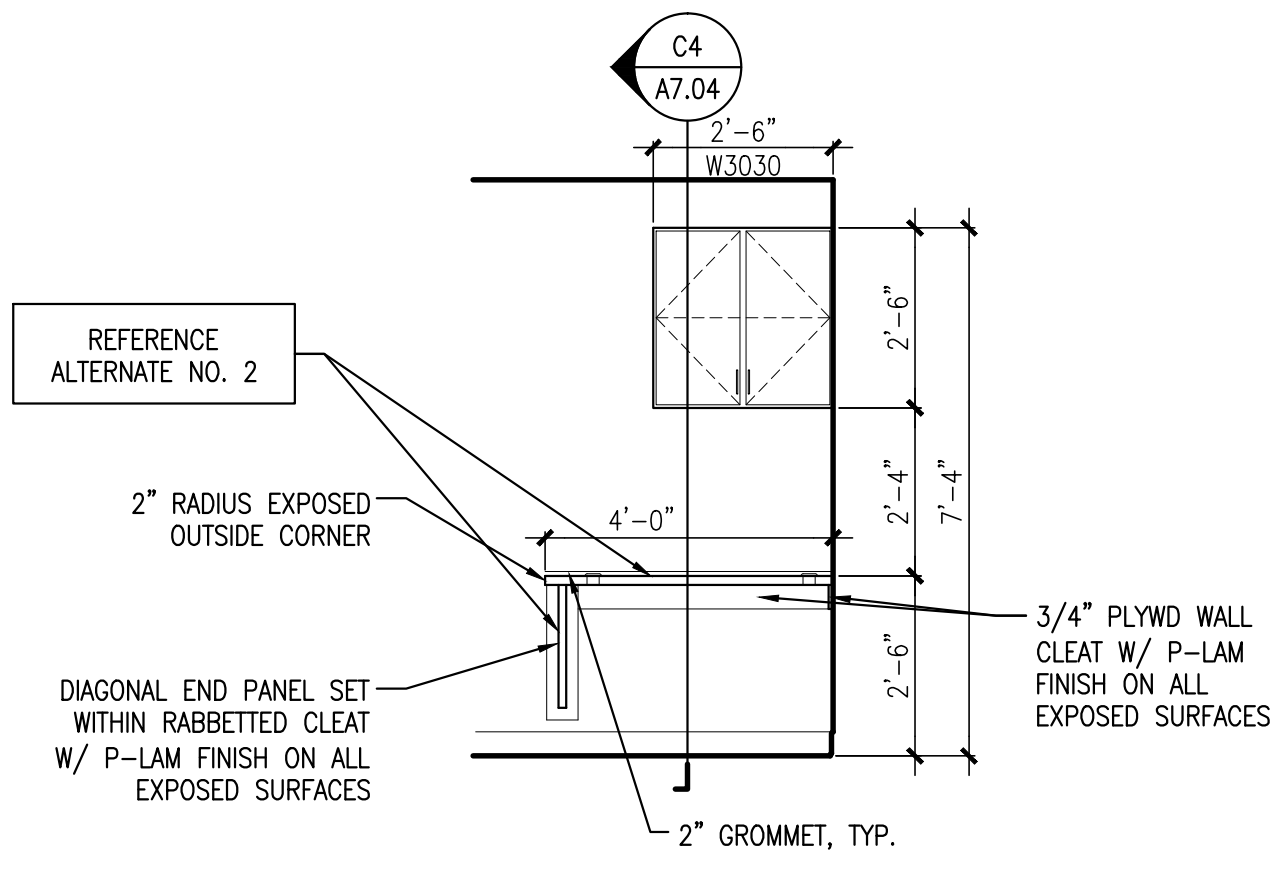
ELEVATION "C"



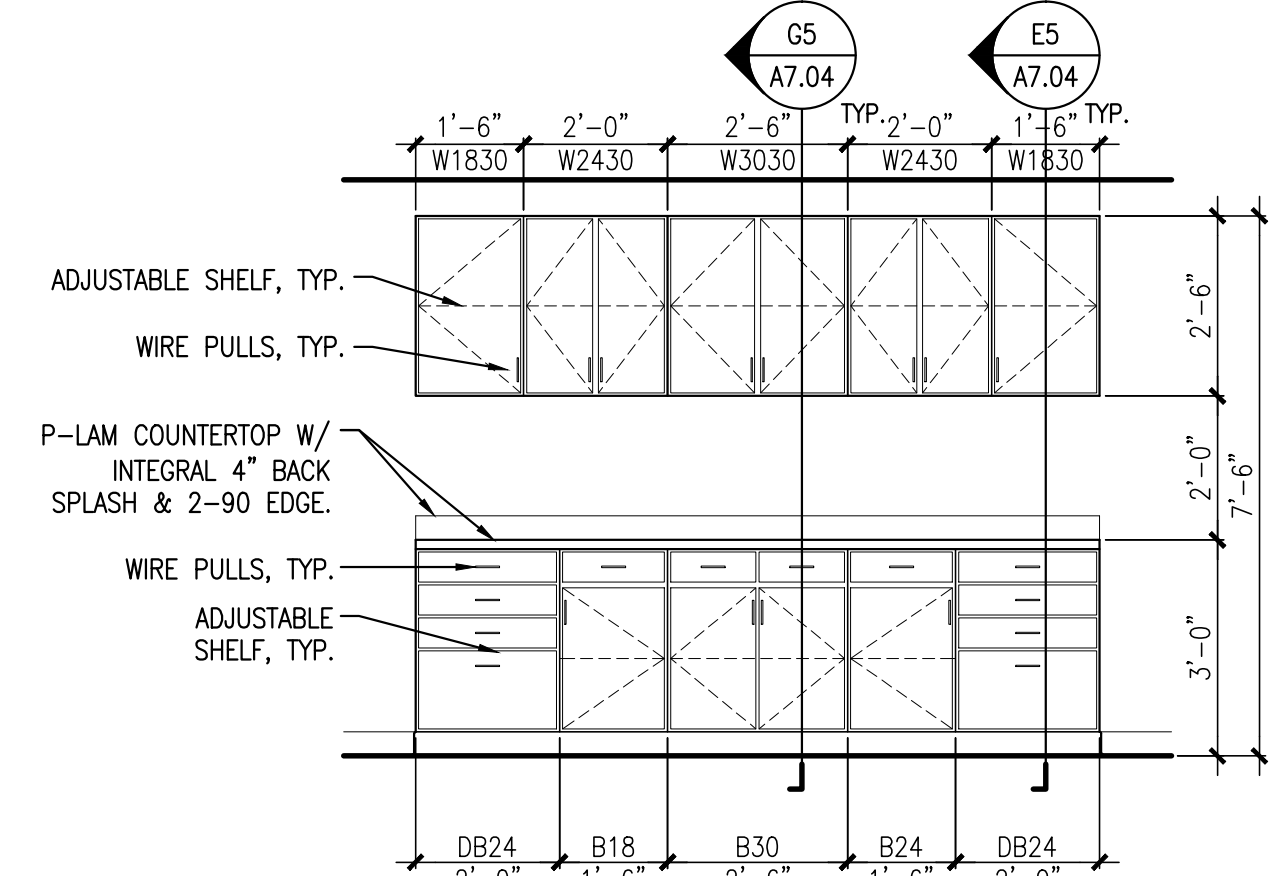
ELEVATION "D"

A2 CASEWORK ELEVATIONS @ TESTING LAB
REFERENCED FROM: SCALE: 3/8" = 1'-0"

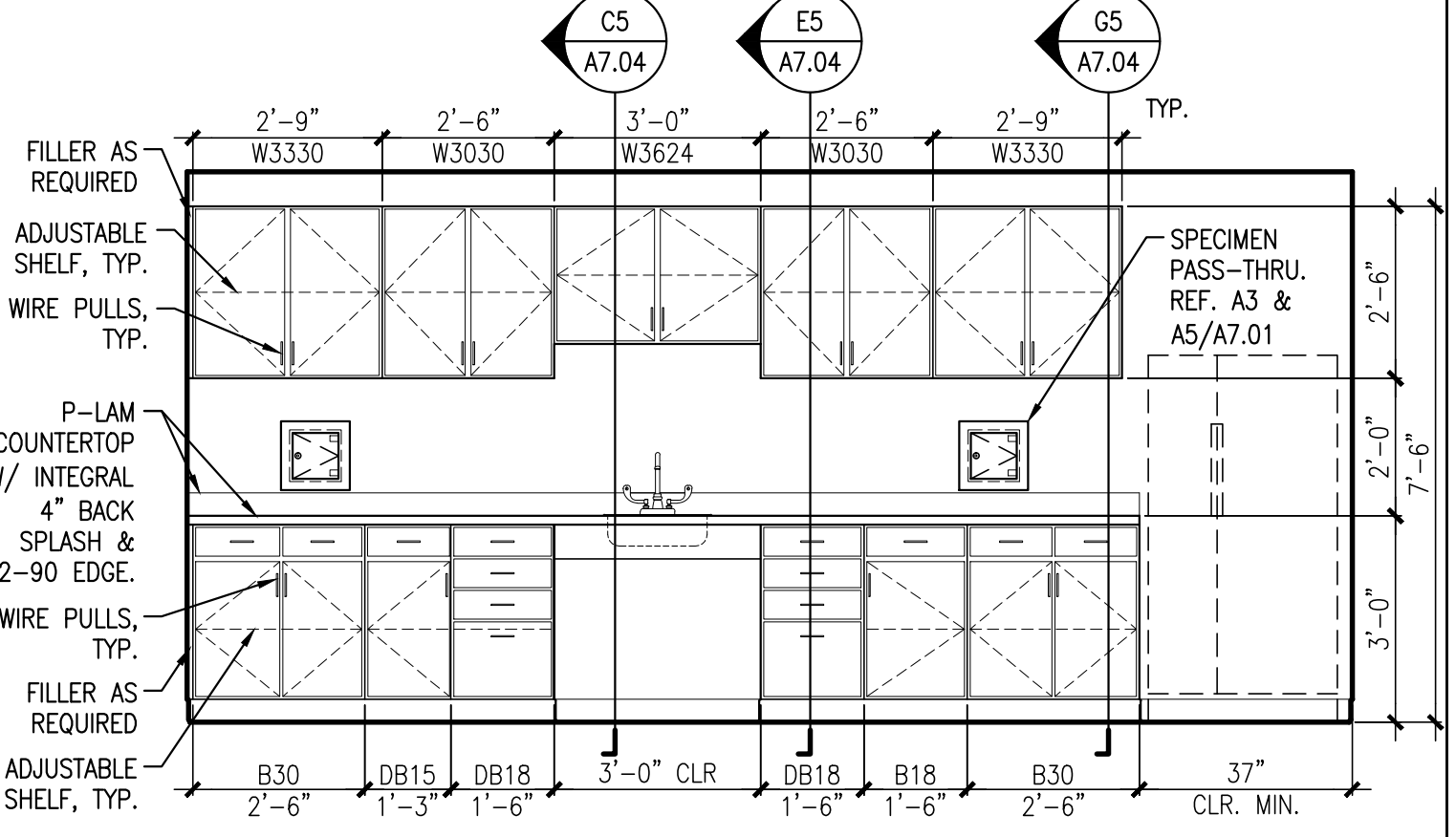
G2 CASEWORK ELEVATION @ MA STATION
REFERENCED FROM: SCALE: 3/8" = 1'-0"



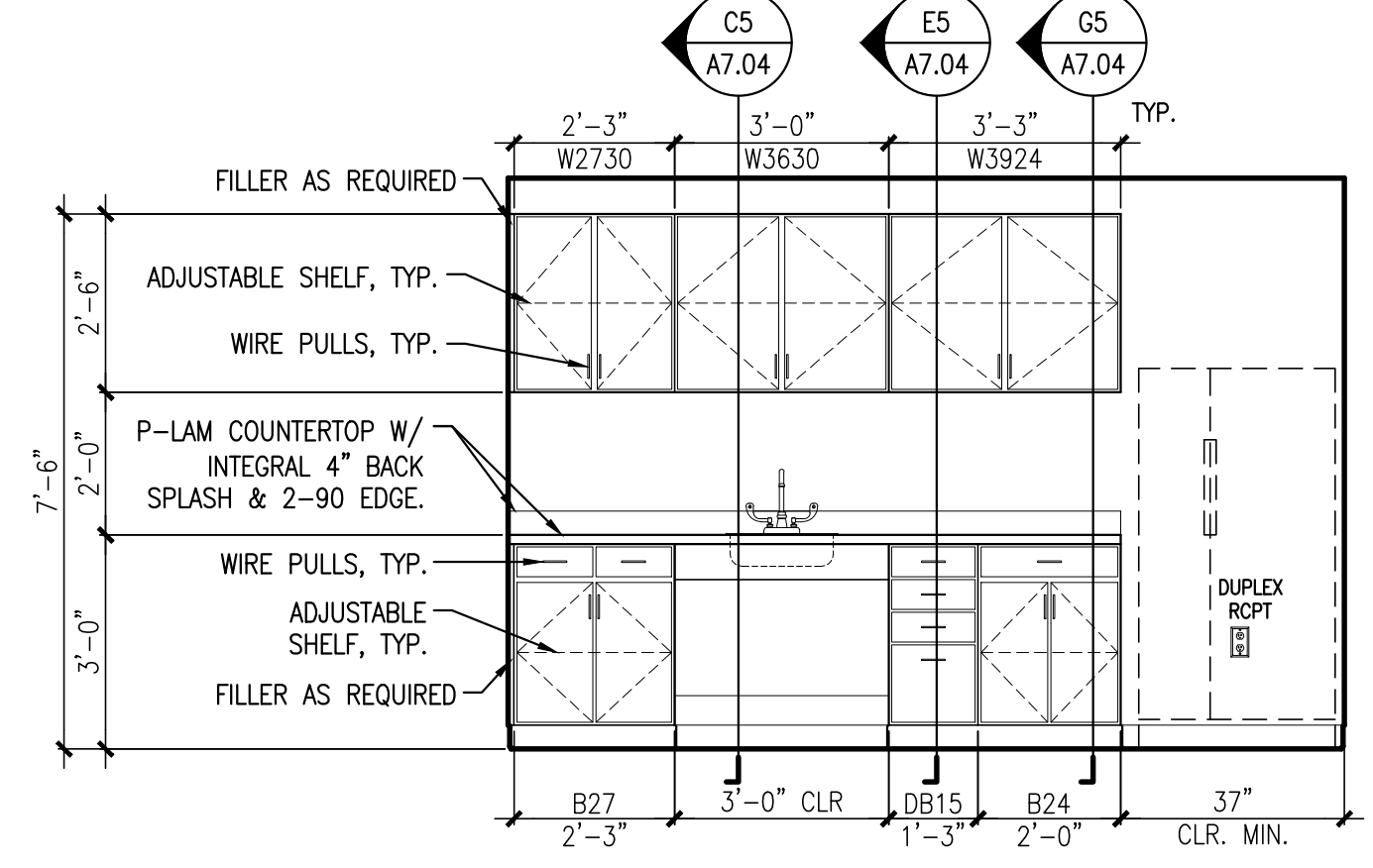
ELEVATION "C4"



ELEVATION "C5"



ELEVATION "E4"



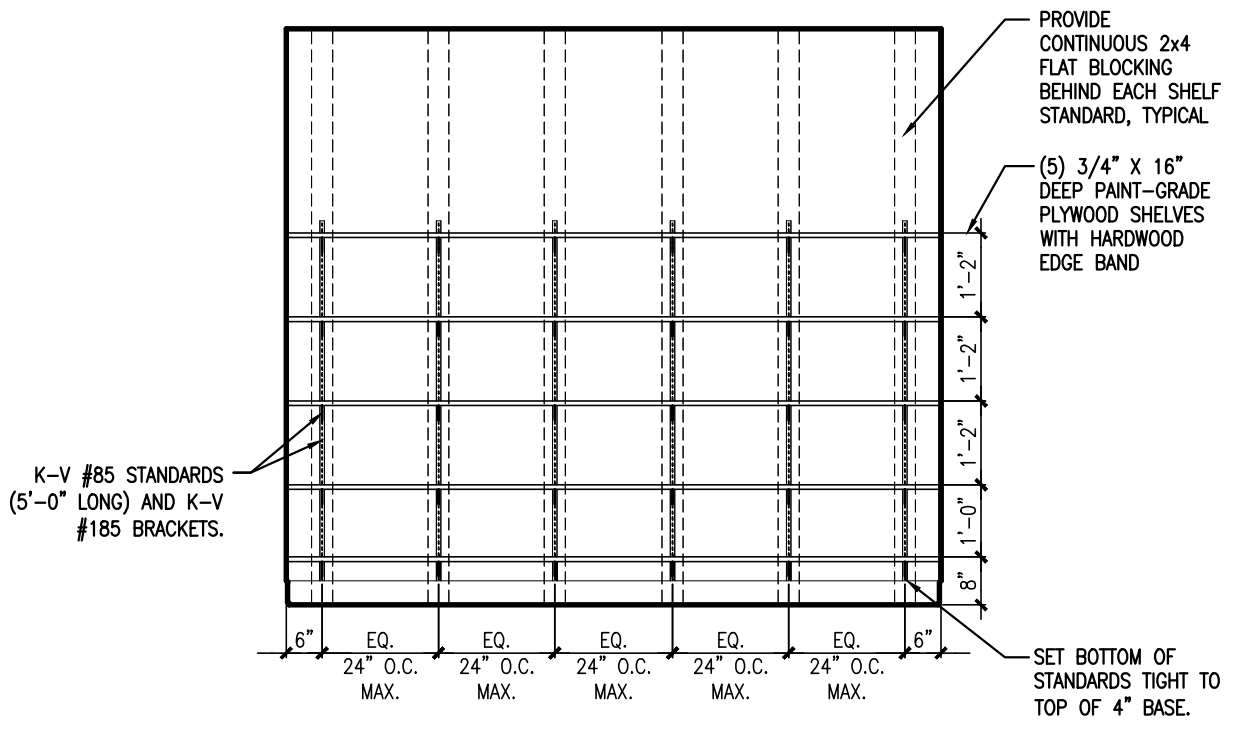
ELEVATION "G4"

A4 CASEWORK ELEVATION @ TYPICAL EXAM ROOM
REFERENCED FROM: SCALE: 3/8" = 1'-0"

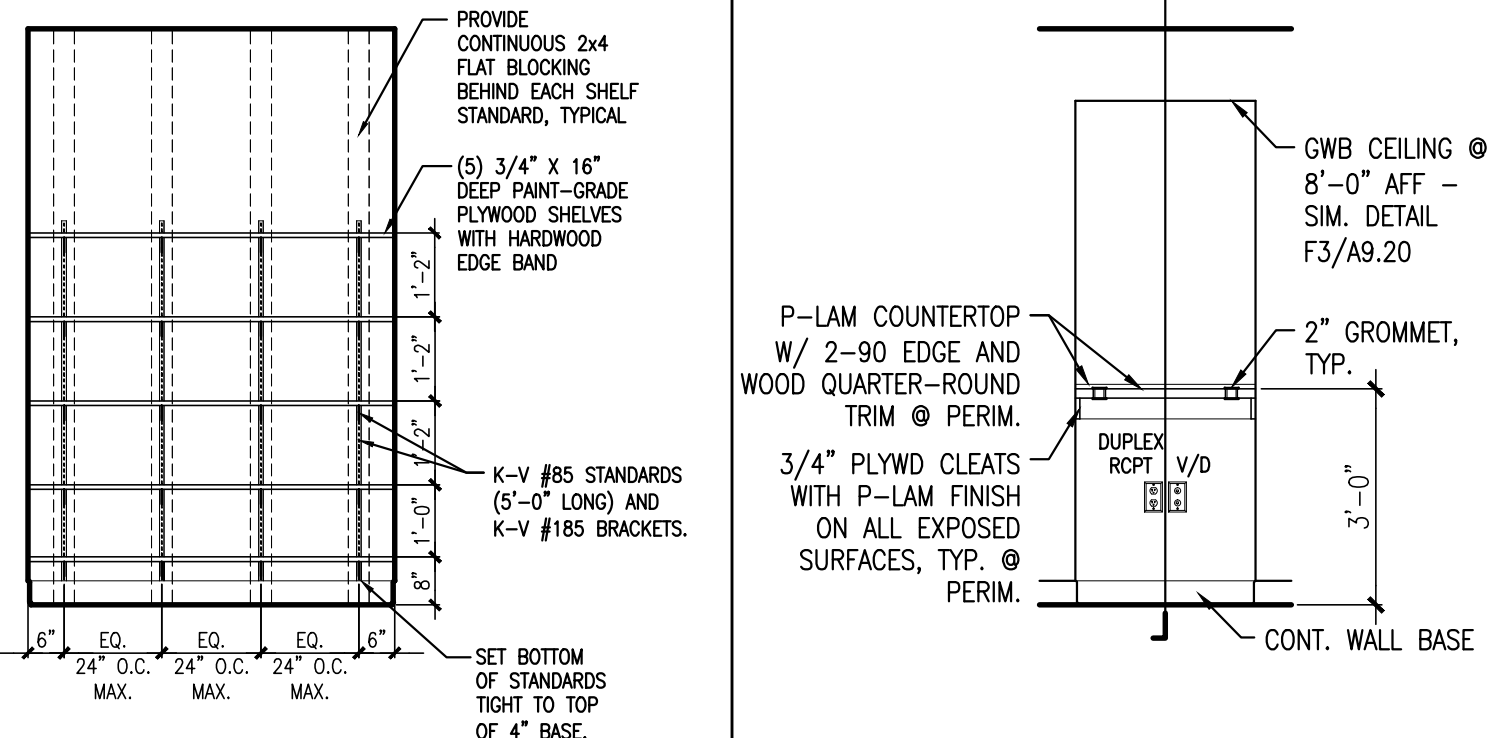
C4 CASEWORK ELEVATION @ TESTING LAB
REFERENCED FROM: SCALE: 3/8" = 1'-0"

E4 CASEWORK ELEVATION @ PHLEBOTOMY LAB
REFERENCED FROM: SCALE: 3/8" = 1'-0"

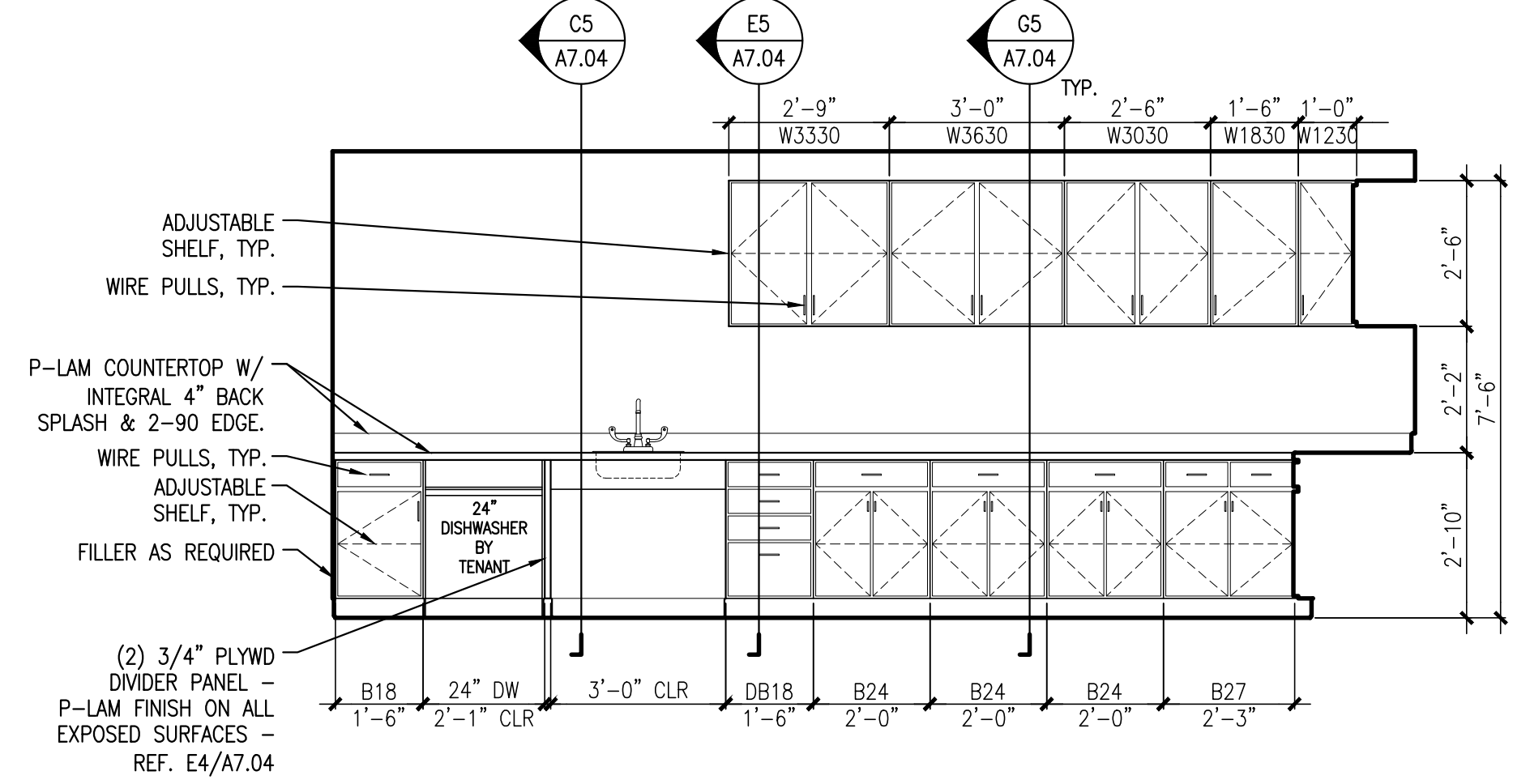
G4 CASEWORK ELEVATION @ ESA
REFERENCED FROM: SCALE: 3/8" = 1'-0"



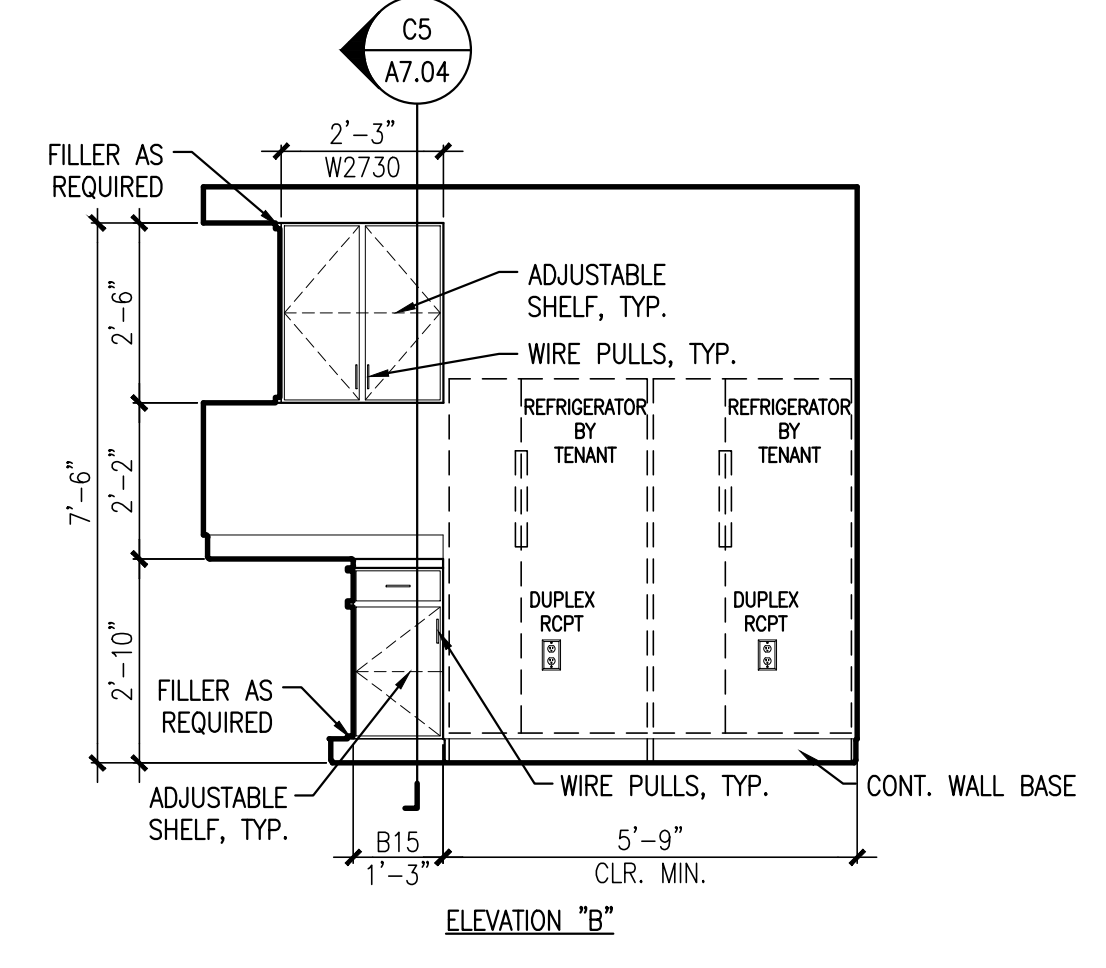
ELEVATION "A5"



ELEVATION "C5"



ELEVATION "E4"



ELEVATION "G4"

GENERAL NOTES:
1. PROVIDE P-LAM FINISH @ ALL EXPOSED SURFACES OF CASEWORK, INCLUDING BUT NOT LIMITED TO CASEWORK ENDS.

A5 CASEWORK ELEVATION @ CLEAN SUPPLY #107
REFERENCED FROM: SCALE: 3/8" = 1'-0"

C5 ELEV. @ JANITORS SUPPLIES
SCALE: 3/8" = 1'-0"

D5 ELEV. @ CONF./BREAK ROOM
SCALE: 3/8" = 1'-0"

E5 CASEWORK ELEVATIONS @ CONF / BREAK ROOM
REFERENCED FROM: SCALE: 3/8" = 1'-0"

OWNER / DEVELOPER
164 REALTY, LLC
100 SILVER STREET
PORTLAND, ME 04101

PROJECT TITLE
NEPHROLOGY ASSOCIATES RENOVATIONS
1600 CONGRESS STREET
PORTLAND, MAINE 04101

DRAWING TITLE
CASEWORK ELEVATIONS
CWS PROJ. NO.: 11422

REVISION	DESCRIPTION	DATE

DRAWING NUMBER

A7.02

SCALE: AS NOTED
DATE: 12/22/11