

NOT USED

REFERENCED FROM:

SCALE:

A

CEILING REMOVALS NOTES

REFERENCED FROM:

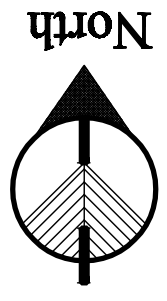
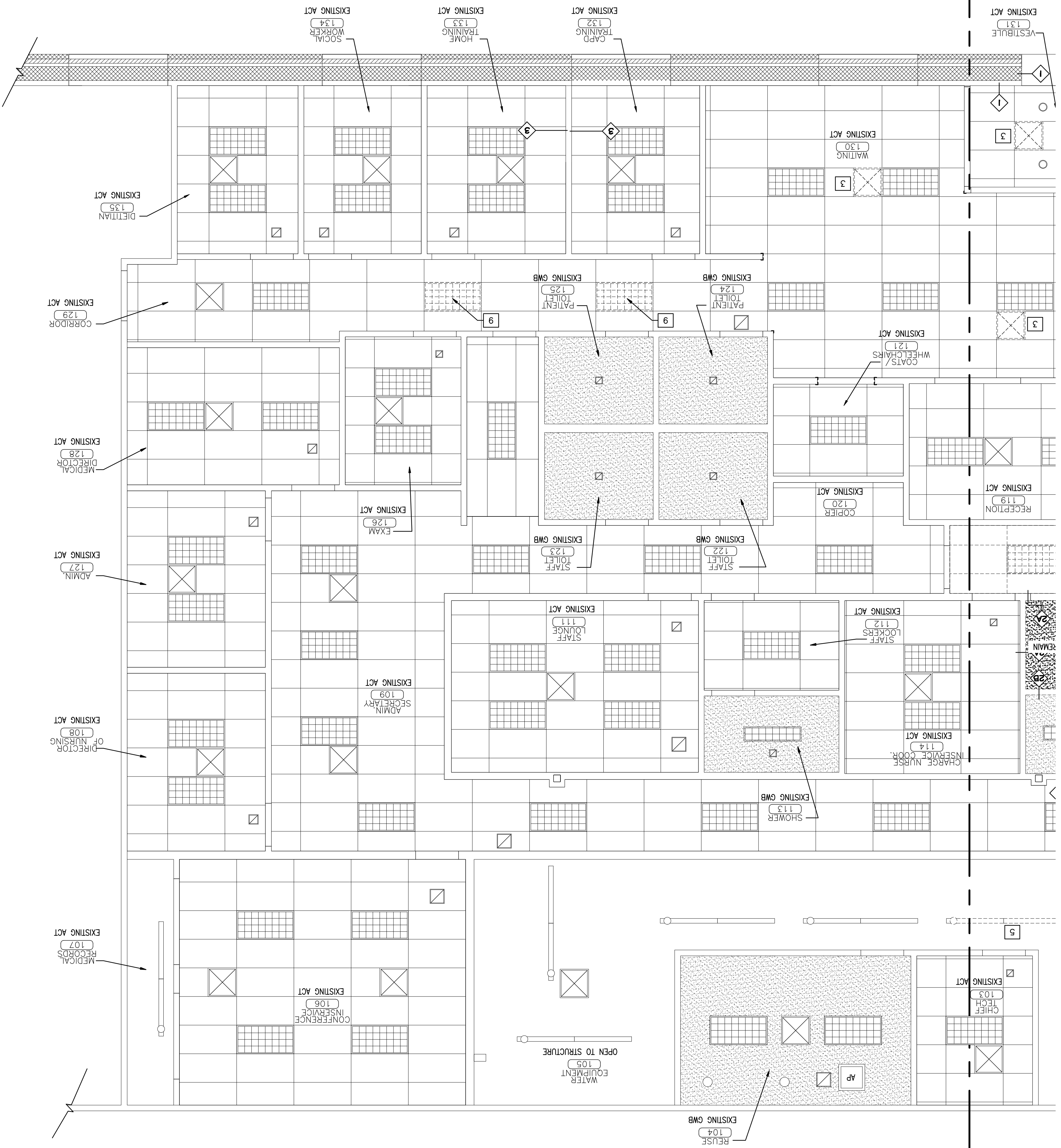
SCALE: NONE

- SPECIFIC CEILING REMOVALS NOTES:
- 1 REMOVE CEILING MOUNTED TELEVISIONS AND ASSOCIATED SUPPORT STANDS COMPLETE AND SALVAGE FOR REINSTALLATION. REFERENCE ELECTRICAL DRAWINGS FOR ADDITIONAL INFORMATION.
 - 2 PRESENTLY OR BY OTHER SCOPES OF WORK IN THE CONSTRUCTION PROCESS. PREP GRID FOR NEW PAINT APPLICATION.
 - 3 REFERENCE MEP DRAWINGS FOR ALL WORK RELATED TO THE REMOVALS OF MECHANICAL & ELECTRICAL SYSTEM COMPONENTS.
 - 4 TEMPORARILY REMOVE EXISTING CURTAIN TRACK AND CURTAIN AS REQUIRED FOR NEW TILE INSTALLATION & NEW PAINT APPLICATIONS. REINSTALL AT THE SAME LOCATION.
 - 5 LOWER EXISTING CHAIN LINK FLUORESCENT FIXTURES 1'-0".
 - 6 REMOVE/RELOCATE EXISTING CHAIN HUNG FLUORESCENT FIXTURES AS REQUIRED FOR NEW WALL CONSTRUCTION.
 - 7 REMOVE/RELOCATE EXISTING DIFFUSERS AS REQUIRED FOR NEW WALL CONSTRUCTION.
 - 8 REMOVE AND SALVAGE EXISTING 2x4 LIGHTS AS REQUIRED FOR CEILING GRID WORK. REINSTALL AT THE SAME LOCATION.
 - 9 REMOVE AND REPLACE EXISTING 2x4 LIGHTS.

REMOVALS REFLECTED CEILING PLAN (WEST SIDE)

REFERENCED FROM:

SCALE: 1/4" = 1'-0"



DA2.2
Drawing Number:

REMOVALS REFLECTED CEILING PLAN (WEST SIDE)
Drawing Title:
Scale: 1/4" = 1'-0"
Date: 9/04/2007
CWS Proj No.: 2006-447-1B

REVISIONS	Date:	Description:

PRESENUS MEDICAL SERVICES DIALYSIS SERVICES NORTH AMERICA
1256 MAIN STREET
WALTHAM, MA 02451
(781) 891-0839
(781) 891-0830

THE RENOVATIONS TO SOUTHERN MAINE DIALYSIS PORTLAND, MAINE #1190
1600 CONGRESS STREET
PORTLAND, MAINE 04101

434 Cumberland Avenue
Portland, ME 04101
Phone: (207) 774-4444
Fax: (207) 774-4016
www.CWSarch.com

