

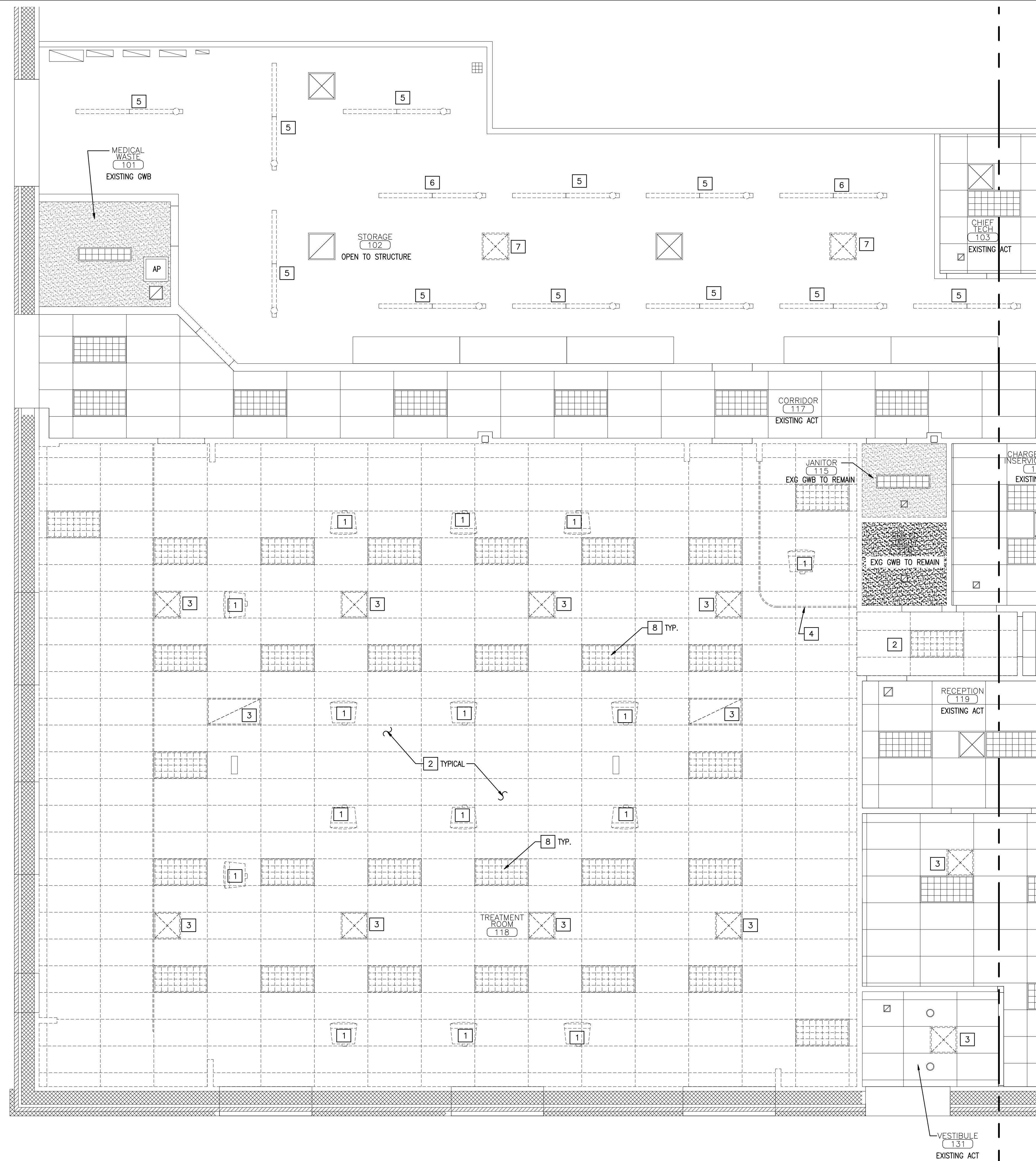
SPECIFIC CEILING REMOVALS NOTES:

- 1 REMOVE CEILING MOUNTED TELEVISIONS AND ASSOCIATED SUPPORT STANDS COMPLETE AND SALVAGE FOR REINSTALLATION. REFERENCE ELECTRICAL DRAWINGS FOR ADDITIONAL INFORMATION.
- 2 REMOVE EXISTING CEILING TILE COMPLETE. CEILING GRID TO REMAIN. FIX/REPAIR/REPLACE GRID COMPONENTS THAT ARE DAMAGED PRESENTLY OR BY OTHER SCOPES OF WORK IN THE CONSTRUCTION PROCESS. PREP GRID FOR NEW PAINT APPLICATION.
- 3 REFERENCE MEP DRAWINGS FOR ALL WORK RELATED TO THE REMOVALS OF MECHANICAL & ELECTRICAL SYSTEM COMPONENTS.
- 4 TEMPORARILY REMOVE EXISTING CURTAIN TRACK AND CURTAIN AS REQUIRED FOR NEW TILE INSTALLATION & NEW PAINT APPLICATIONS. REINSTALL AT THE SAME LOCATION.
- 5 LOWER EXISTING CHAIN LINK FLOURESCENT FIXTURES 1'-0".
- 6 REMOVE/RELOCATE EXISTING CHAIN HUNG FLOURESCENT FIXTURES AS REQUIRED FOR NEW WALL CONSTRUCTION.
- 7 REMOVE/RELOCATE EXISTING DIFFUSERS AS REQUIRED FOR NEW WALL CONSTRUCTION.
- 8 REMOVE AND SALVAGE EXISTING 2x4 LIGHTS AS REQUIRED FOR CEILING GRID WORK. REINSTALL AT THE SAME LOCATION.
- 9 REMOVE AND REPLACE EXISTING 2x4 LIGHTS.

A CEILING REMOVALS NOTES

REFERENCED FROM:

SCALE: NONE



J REMOVALS REFLECTED CEILING PLAN (EAST SIDE)

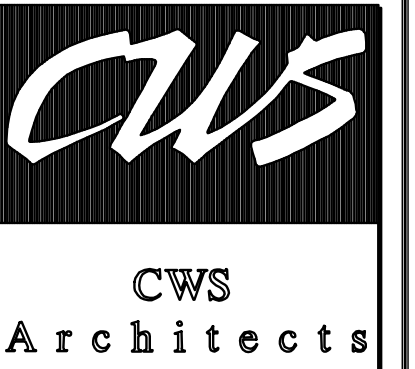
REFERENCED FROM:

SCALE: 1/4" = 1'-0"

I NOT USED

REFERENCED FROM:

SCALE: NONE



434 Cumberland Avenue
Portland, ME 04101
Phone: (207) 774-4441
Fax: (207) 774-4016
www.CWSarch.com

**THE RENOVATIONS TO
SOUTHERN MAINE DIALYSIS
PORTLAND, MAINE #1190**
1600 CONGRESS STREET
PORTLAND, MAINE 04101

**FRESENIUS
MEDICAL SERVICES
DIALYSIS SERVICES
NORTH AMERICA**
1296 MAIN STREET
WALTHAM, MA 02451
(781) 891-0829
(781) 891-0830

Owner: FRESENIUS MEDICAL SERVICES DIALYSIS SERVICES NORTH AMERICA

REVISIONS:	Date:	Description:

Drawing Title: **REMOVALS REFLECTED CEILING PLAN (EAST SIDE)**
Scale: 1/4" = 1'-0"
Date: 9/04/2007
CWS Proj. No.: 20064474pt

Drawing Number:
DA2.1

