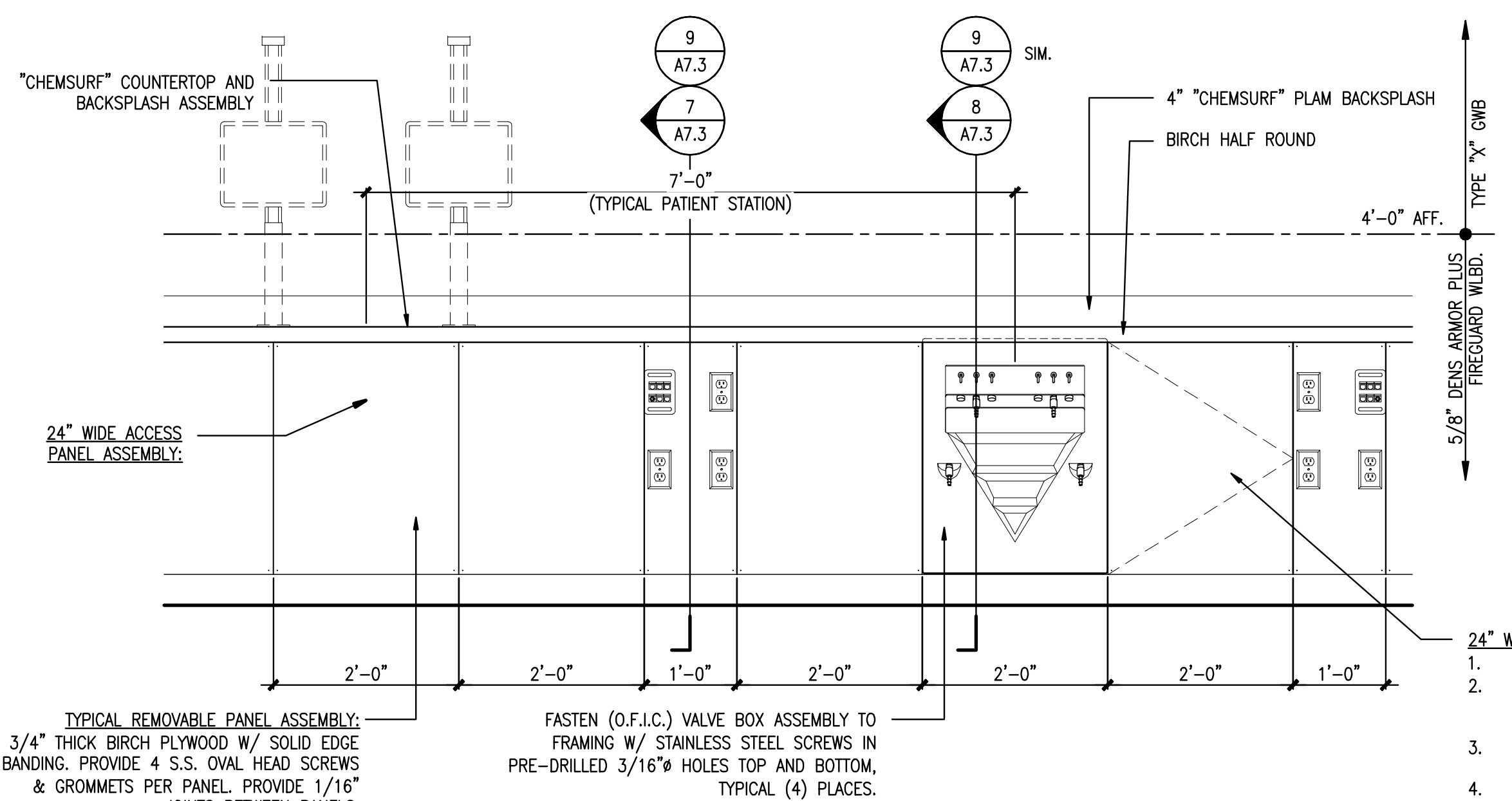
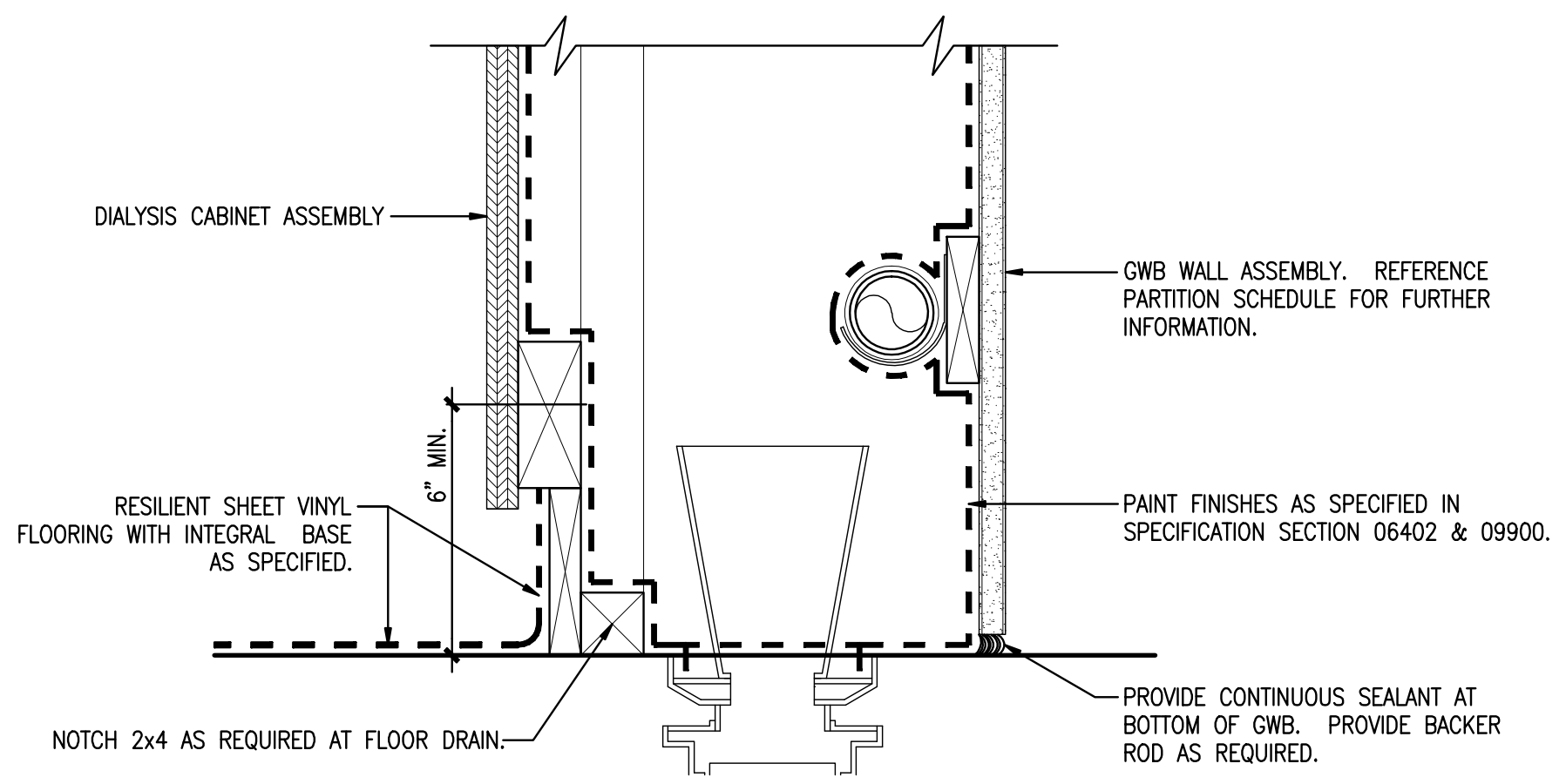


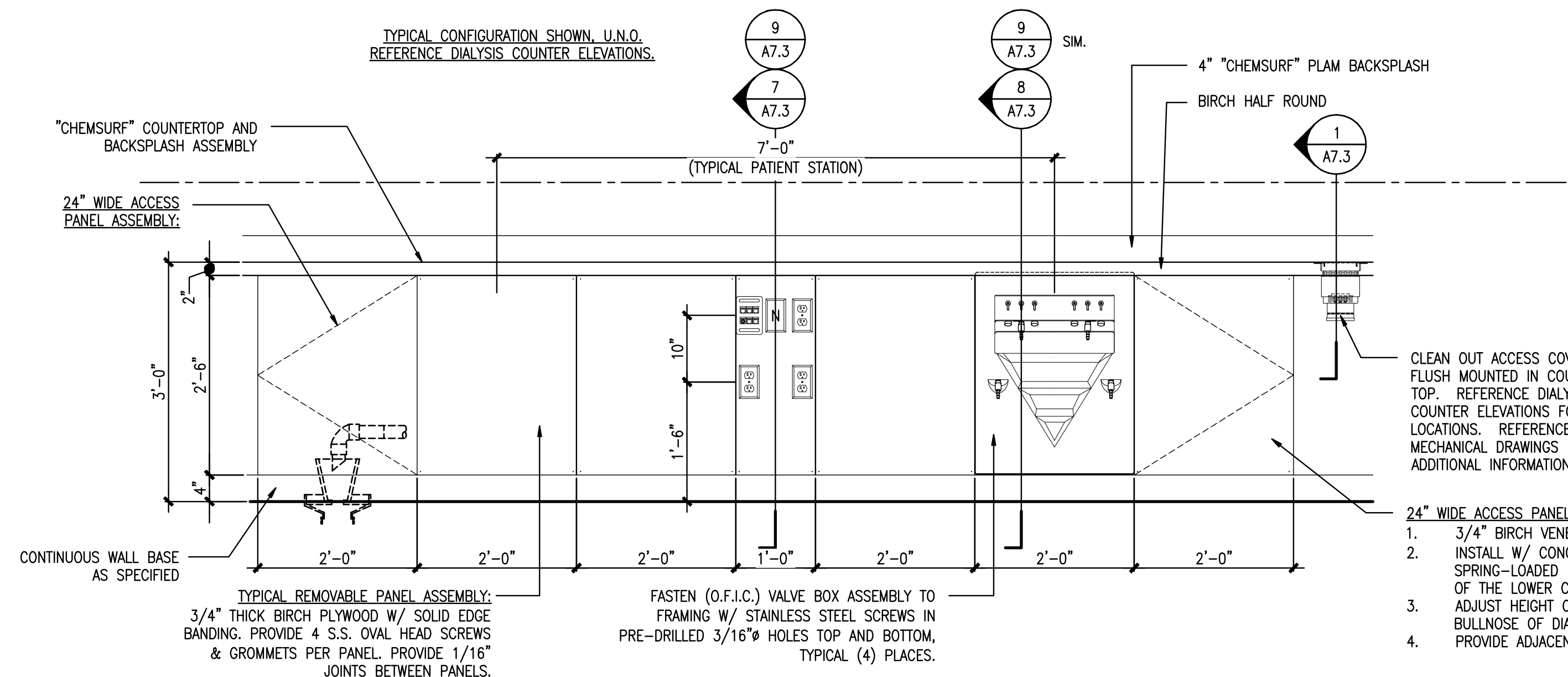
1 MECH. CLEAN OUT DETAIL @ DIALYSIS COUNTERTOP
 REFERENCED FROM: SCALE: 3" = 1'-0"
 FRESenius REFERENCE: P-5A



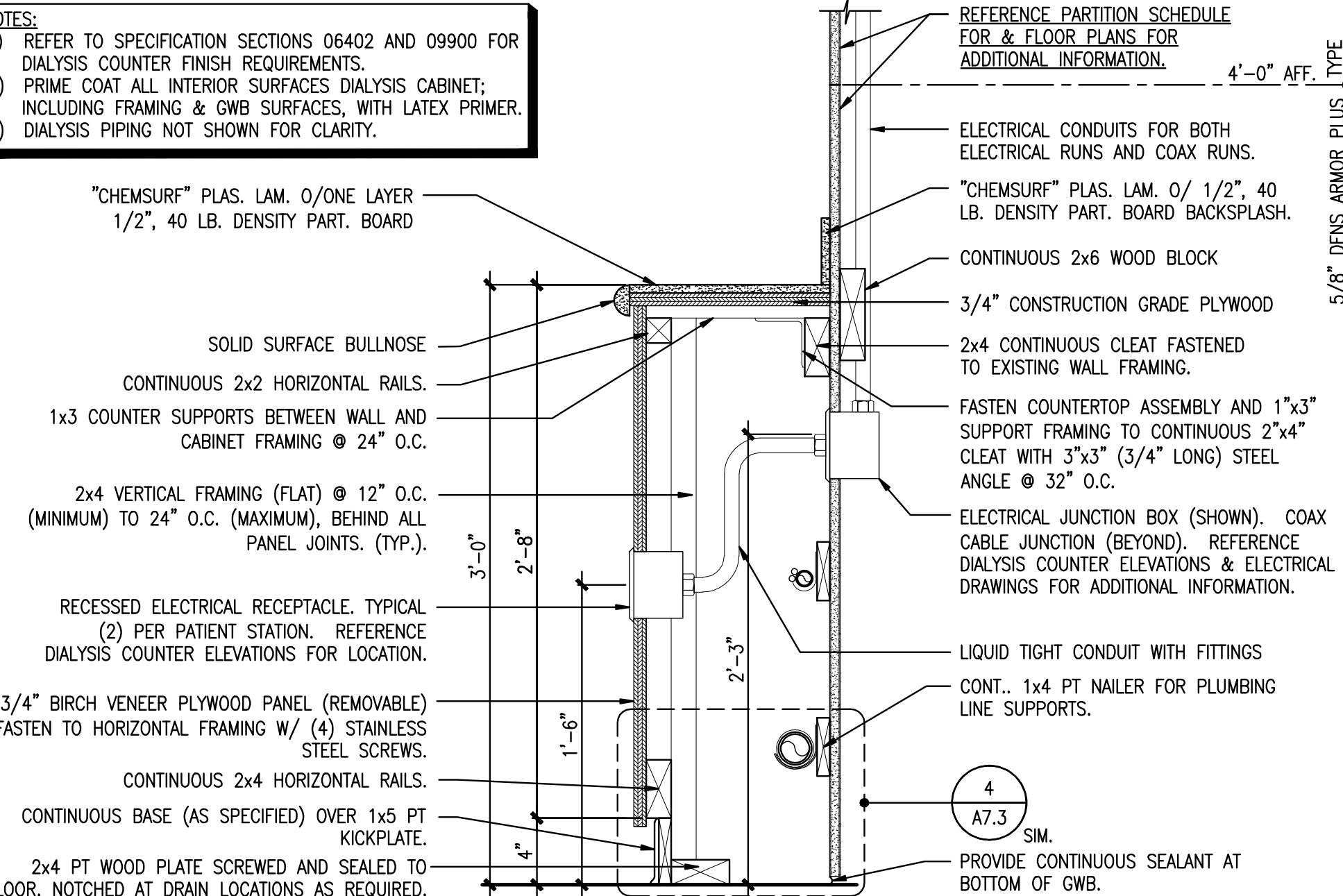
2 TYPICAL DIALYSIS COUNTER ELEVATION @ STANDARD PATIENT STATION
 REFERENCED FROM: SCALE: 3/4" = 1'-0"
 FRESenius REFERENCE: AD-46



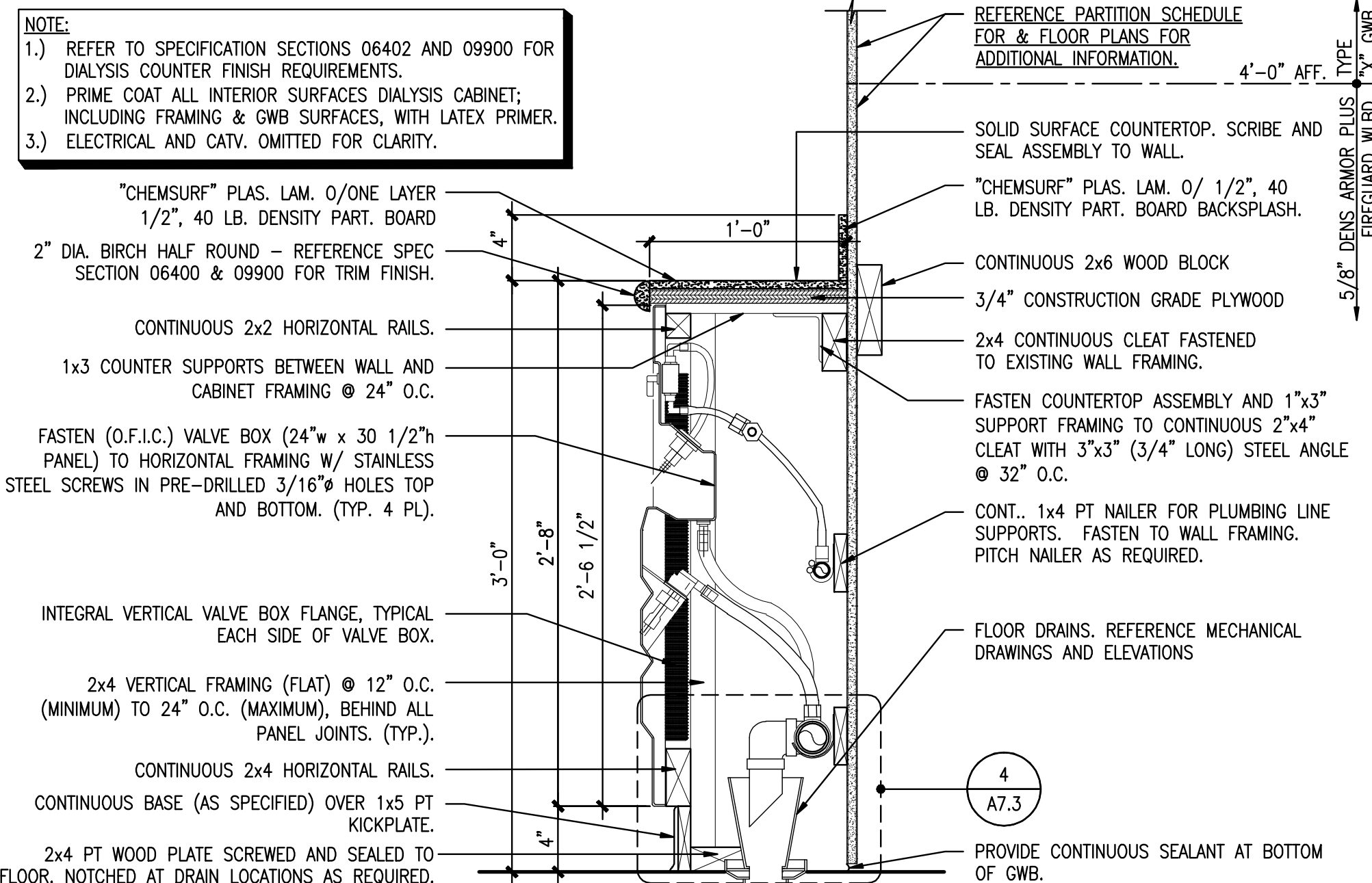
4 WATER PROOFING DETAIL @ DIALYSIS COUNTER
 REFERENCED FROM: SCALE: 3" = 1'-0"
 FRESenius REFERENCE: AD-57



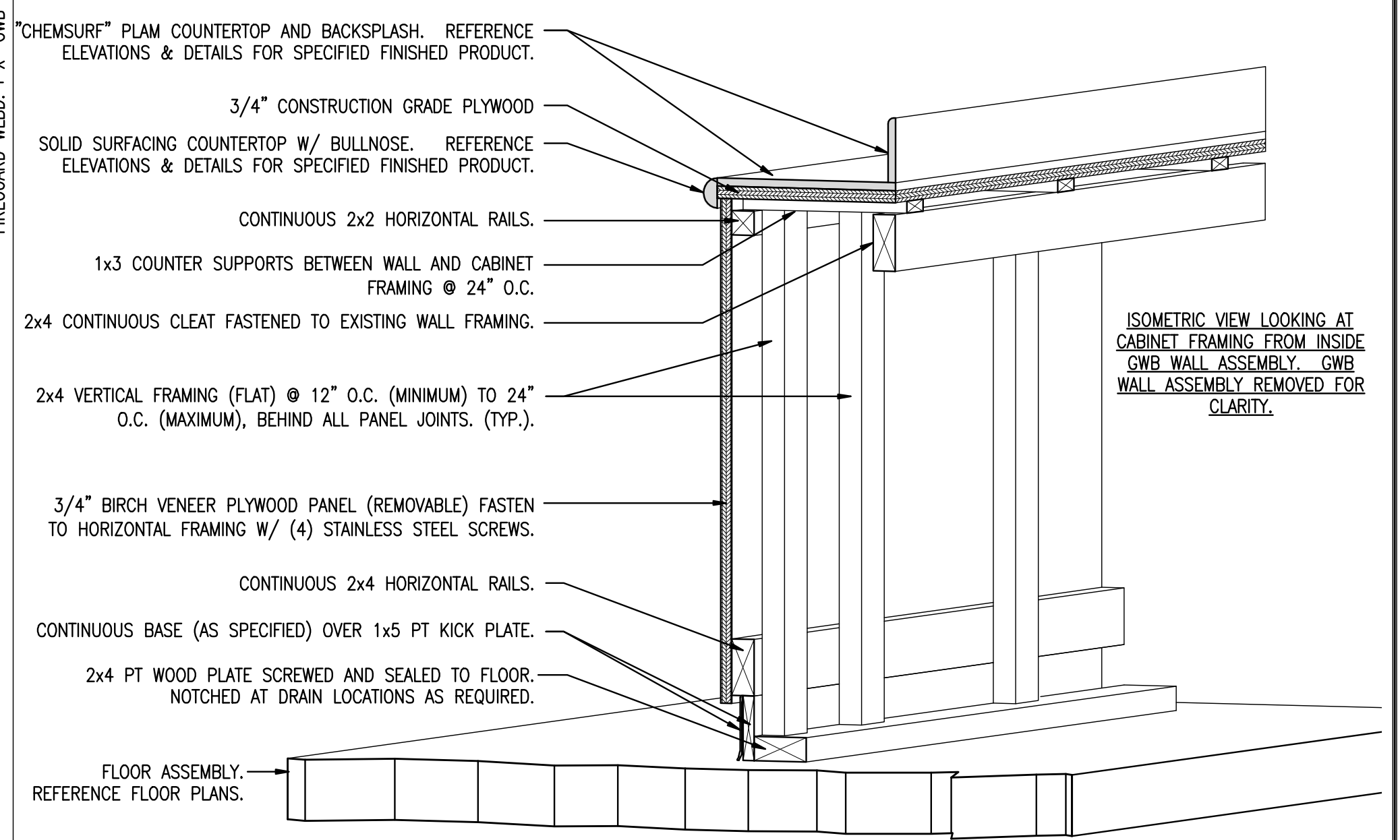
5 TYPICAL DIALYSIS COUNTER ELEVATION @ NOCTURNAL PATIENT STATION
 REFERENCED FROM: SCALE: 3/4" = 1'-0"
 FRESenius REFERENCE: AD-46



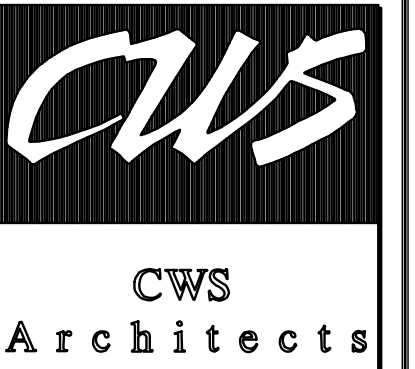
7 ELECTRICAL SECTION @ DIALYSIS COUNTER
 REFERENCED FROM: SCALE: 1 1/2" = 1'-0"
 FRESenius REFERENCE: AD-49



8 MECHANICAL SECTION @ DIALYSIS COUNTER
 REFERENCED FROM: SCALE: 1 1/2" = 1'-0"
 FRESenius REFERENCE: AD-44



9 ISOMETRIC VIEW @ DIALYSIS COUNTER FRAMING
 REFERENCED FROM: SCALE: 1 1/2" = 1'-0"
 FRESenius REFERENCE: ***



434 Cumberland Avenue
 Portland, ME 04101
 Phone: (207) 774-4441
 Fax: (207) 774-4016
 www.CWSarch.com

THE RENOVATIONS TO
 SOUTHERN MAINE DIALYSIS
 PORTLAND, MAINE #190
 1600 CONGRESS STREET
 PORTLAND, MAINE 04101

FRESenius SERVICES
 MEDICAL SERVICES
 DIALYSIS SERVICES
 NORTH AMERICA
 1256 MAIN STREET
 WALTHAM, MA 02451
 (781) 891-0829
 (781) 891-0830

REVISIONS:

Date:	Description:

Drawing Title:
**DIALYSIS COUNTER
 ELEVATION, MISC.
 SECTIONS AND
 DETAILS**
 Scale:
 Date:
 CWS Proj. No.: 2006-447-14

Drawing Number:
A7.3