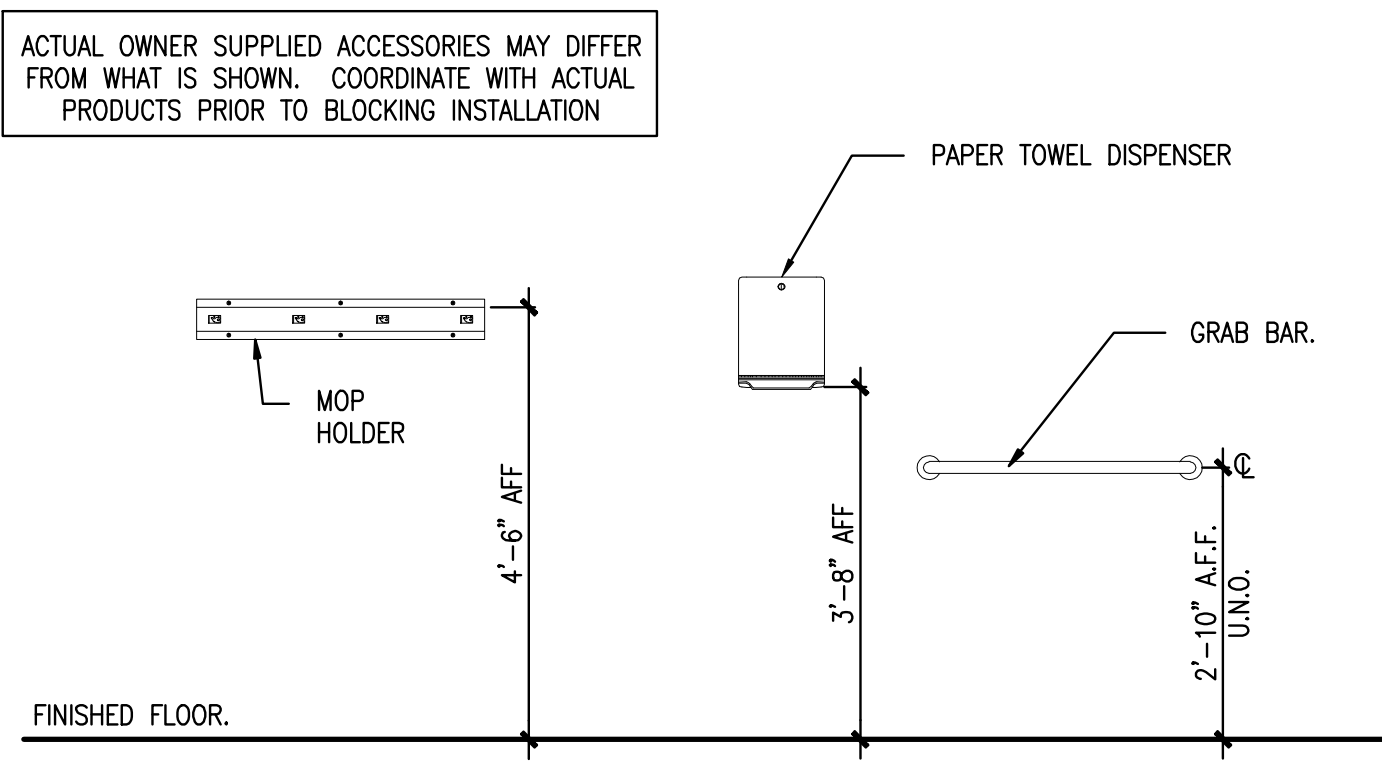


1	NOT USED	FRESenius REFERENCE: **
REFERENCED FROM:		SCALE:



5	TYPICAL INSTALLATION HEIGHTS	FRESenius REFERENCE: **
REFERENCED FROM:		SCALE: 1/2" = 1'-0"

9	NOT USED	FRESenius REFERENCE: **
REFERENCED FROM:		SCALE: NTS

ABBREVIATIONS

- CPT = CARPET FLOORING VINYL COMPOSITION TILE
- VCT = VINYL COMPOSITION TILE
- SV = SHEET VINYL
- CONC-S = CONCRETE SEALER
- MAT = FLOOR MAT
- CT = CERAMIC TILE, 2 X 2 FLOOR TILE
- WCT = CERAMIC WALL TILE 4 X 4
- PT = PAINT FINISHES
- GWB = GYPSUM WALL BOARD OR SUSPENDED GWB @ CEILING CONDITIONS. GWB TYPE VARIES, REFERENCE PARTITION SCHEDULE.
- ACT-1 = ACOUSTICAL CEILING TILE 24 X 48
- PVT = PORCELAIN PAVER TILE
- "X" = INDICATES EXISTING FINISHES - REFERENCE REMARKS FOR INFORMATION PERTAINING TO SCOPE OF WORK.
- WCPT = WALL CARPET
- VWC = VINYL WALL COVERING
- PLYWD = PLYWOOD

NOTE:
1. REFERENCE SPECIFICATIONS FOR ADDITIONAL INFORMATION.
2. REFERENCE DRAWING A1.3 & A1.6 FOR APPLICABLE TILE PATTERNS.

13	SCHEDULE ABBREVIATIONS	FRESenius REFERENCE: **
REFERENCED FROM:		SCALE: NTS

Southern Maine Dialysis #1190																				9/4/2007				
Portland, Maine																								
Room Finish & Color Schedule																								
Room No.	Room Name	Flooring Color	Base Color	Wall Colors - Sherwin Williams Paint Colors				Paint Color	Paint Color	Paint System	Wall Covering	Corner Guards	Chair Rails	FRP	Laminate (Without Chamfer required @ Dialysis Clinics only)	Self Surfacing	Wood Trim	Floor Mat	CEILING	REMARKS				
				North	East	South	West	Door Frames	Dialysis Panel Frame	Ref. Spec. 8909	Wall Gordon G400002	Wall Carpet	Painting	Painting		Wilsons Greenstar	Moist Inc.	MATERIAL	CEILING HEIGHT					
100	BD8 / Grande	Dur-A-Flex Shop Floor - Medium Gray	Integral Cove Base			SW 1003 First Star - Eggshell	SW 1003 First Star - Eggshell	SW 1003 First Star - Semi-Gloss		P-2 / P-4							#001 Linen White				7			
102	Storage					SW 1003 First Star - Eggshell		SW 1003 First Star - Semi-Gloss		P-2 / P-4														
106	Storage			SW 1003 First Star - Eggshell	SW 1003 First Star - Eggshell	SW 1003 First Star - Eggshell	SW 1003 First Star - Eggshell			P-2 / P-4														
116	Janitor's			SW 1003 First Star - Eggshell	SW 1003 First Star - Eggshell	SW 1003 First Star - Eggshell	SW 1003 First Star - Eggshell	SW 1003 First Star - Semi-Gloss		P-2 / P-4											5, 7, 11			
118	Bedded Utility			SW 1003 First Star - Eggshell	SW 1003 First Star - Eggshell	SW 1003 First Star - Eggshell	SW 1003 First Star - Eggshell	SW 1003 First Star - Semi-Gloss		P-2 / P-4											5, 7, 11			
119	Treatment Room - JVCY			SW 1003 First Star - Eggshell	SW 1003 First Star - Eggshell	SW 1003 First Star - Eggshell	SW 1003 First Star - Eggshell	SW 1003 First Star - Semi-Gloss	SW 6008 Sand Dune - Semi-Gloss	P-2 / P-4							#001 Linen White	457-80 Dakota Ridge	Farm Mingo D3080A	Clear Bath Finish	ACT-1	1, 5		
119	Treatment Room - VCT	Armstrong 51005 - Hazelnut	Johnsonite - 805 Silver Gray	SW 1003 First Star - Eggshell	SW 1003 First Star - Eggshell	SW 1003 First Star - Eggshell	SW 1003 First Star - Eggshell	SW 1003 First Star - Semi-Gloss	SW 6008 Sand Dune - Semi-Gloss	P-2 / P-4							#001 Linen White	457-80 Dakota Ridge	Asph Spectra 9170BT	Clear Bath Finish	ACT-1	1, 5		
119	Treatment - BV	Armstrong 57202 Curves Edge	Johnsonite - 805 Silver Gray	SW 1003 First Star - Eggshell	SW 1003 First Star - Eggshell	SW 1003 First Star - Eggshell	SW 1003 First Star - Eggshell	SW 1003 First Star - Semi-Gloss	SW 6008 Sand Dune - Semi-Gloss	P-2 / P-4							#001 Linen White	457-80 Dakota Ridge	Asph Spectra 9170BT	Clear Bath Finish	ACT-1	1, 5		
119	Treatment - BV	Alto Mado Epto MC125212	Integral Cove Base	SW 1003 First Star - Eggshell	SW 1003 First Star - Eggshell	SW 1003 First Star - Eggshell	SW 1003 First Star - Eggshell	SW 1003 First Star - Semi-Gloss	SW 6008 Sand Dune - Semi-Gloss	P-2 / P-4							#001 Linen White	457-80 Dakota Ridge	Asph Spectra 9170BT	Clear Bath Finish	ACT-1	1, 5		
	Weldrol	105																						
	Mastic 100	1																						
	Cove Base Top Cap		Johnsonite - 805 Silver Gray																					
119	Reception																							
	Field / Main Body Color																							
	Field / Main Body Color																							
121	Coats/Wheel Chairs																							
	Field / Main Body Color	Alto Smooth Ethos - Golden Oak 309-21	Johnsonite - 840 Black																			2, 3, 4, 10		
129	Corridor																							
	Field / Main Body Color	Alto Smooth Ethos - Golden Oak 309-21	Johnsonite - 840 Black	SW 1116 Vellum - Eggshell	SW 1116 Vellum - Eggshell	SW 1116 Vellum - Eggshell	SW 1116 Vellum - Eggshell	SW 1116 Vellum - Eggshell	SW 1116 Vellum - Eggshell	P-1 / P-4							#001 Linen White	W04-4 Mission White	Kennite #70 Edge			5, 10		
129	Corridor																							
	Field Color	Armstrong 51529 Sandy Beach	Johnsonite - 840 Black	SW 1116 Vellum - Eggshell	SW 1116 Vellum - Eggshell	SW 1116 Vellum - Eggshell	SW 1116 Vellum - Eggshell	SW 1116 Vellum - Eggshell	SW 1116 Vellum - Eggshell	P-1 / P-4							#001 Linen White	W04-4 Mission White	Kennite #70 Edge			5, 10		
	Accent Color	Armstrong 51528 Sandrift White																						
	Highlight Color	Armstrong 51510 Classic Black																						
130	Walling																							
	Field / Main Body Color	Alto Smooth Ethos - Golden Oak 309-21	Johnsonite - 840 Black																			2, 3, 4, 5, 10		
131	Vestibule																							
	Field Color			SW 1003 First Star - Eggshell	SW 1003 First Star - Eggshell	SW 1003 First Star - Eggshell	SW 1003 First Star - Eggshell	SW 1003 First Star - Semi-Gloss		P-1												Barber - Charcoal #7	5	
132	Home Home Room																							
	Field Color			SW 1003 First Star - Eggshell	SW 1003 First Star - Eggshell	SW 1003 First Star - Eggshell	SW 1003 First Star - Eggshell	SW 1003 First Star - Semi-Gloss		P-2 / P-4													5	
132	Home Home Room																							
	Field Color			SW 1003 First Star - Eggshell	SW 1003 First Star - Eggshell	SW 1003 First Star - Eggshell	SW 1003 First Star - Eggshell	SW 1003 First Star - Semi-Gloss		P-2 / P-4													5	
136	Wiring Closet																							
	Field / Main Body Color	Armstrong 51005 - Hazelnut	Johnsonite - 805 Silver Gray	SW 1003 First Star - Eggshell	SW 1003 First Star - Eggshell	SW 1003 First Star - Eggshell	SW 1003 First Star - Eggshell	SW 1003 First Star - Semi-Gloss		P-1 / P-4													ACT-1	9'-0"
137	Water Treatment																							
	Field / Main Body Color	Dur-A-Flex Shop Floor - Medium Gray	Integral Cove Base	SW 6228 Titanium Black - Eggshell	SW 6228 Titanium Black - Eggshell	SW 6228 Titanium Black - Eggshell	SW 6228 Titanium Black - Eggshell	SW 1003 First Star - Semi-Gloss		P-2 / P-4								#001 Linen White						9
Room Finish & Color Schedule Remarks																								
1		Existing suspended ceiling grid to remain. Repair, and prepare for new paint finishes. Provide paint applications to existing grid. Utilize paint system P-7. Provide new acoustical tile throughout space.																						
2		Provide continuous hardwood chair rail with paint system P-4 finishes.																						
3		Provide vinyl wall coverings above chairrail to underside of ceiling.																						
4		Provide continuous wall carpet from finish floor to chairrail/Vinyl wall covering.																						
5		Patch and repair gap surfaces. Provide paint applications entire body of wall.																						
6		Provide 4'-0" FRP waistcoat and vinyl chairrail as indicated within the floor plans.																						
7		Provide 8'-0" FRP finishes as indicated within the floor plans - ref. A1.1.																						
8		Provide new paint finishes to existing door frames. Corridor side of frame only.																						
9		Provide plywood surfacing to height indicated within the floor plans. Paint finish utilizing paint system P-6.																						
10		Reference miscellaneous floor plans and drawings A1.3 and A1.4 for details of new sheet vinyl.																						
11		Provide paint finishes to existing GWB ceiling assembly. Utilize paint system P-2.																						

11	ROOM FINISH SCHEDULE	FRESenius REFERENCE: **
REFERENCED FROM:		SCALE: NTS

13	SCHEDULE ABBREVIATIONS	FRESenius REFERENCE: **
REFERENCED FROM:		SCALE: NTS

CWS
Architects

434 Cumberland Avenue
Portland, ME 04101
Phone: (207) 774-4441
Fax: (207) 774-4016
www.CWSarch.com

**THE RENOVATIONS TO
SOUTHERN MAINE DIALYSIS
PORTLAND, MAINE #1190**

1600 CONGRESS STREET
PORTLAND, MAINE 04101

**FRESenius
SERVICES
MEDICAL SERVICES
DIALYSIS SERVICES
NORTH AMERICA**

1256 MAIN STREET
WALTHAM, MA 02451
(781) 891-0829
(781) 891-0830

REVISIONS	Date:	
Description:		

**ROOM FINISH
SCHEDULE &
COLOR SCHEDULE**

Scale: NTS
Date: 9/04/2007
CWS Proj. No.: 2006-447-1p

Drawing Number:
A0.2

ISSUED FOR CONSTRUCTION