

APPLICANT
Nephrology Associates
1600 Congress St.
Portland, Maine 04101
Tel: 207-774-5222

Bild Architecture
PO Box 8235
Portland, ME
04104
207.408.0168
evan@bildarchitecture.com



PROJECT NO.
15040
PROJECT NAME
NEPHROLOGY ASSOC.
RENOVATIONS

REVISIONS	NO.
1	1
2	2
3	3
4	4
5	5

PERMIT DRAWINGS

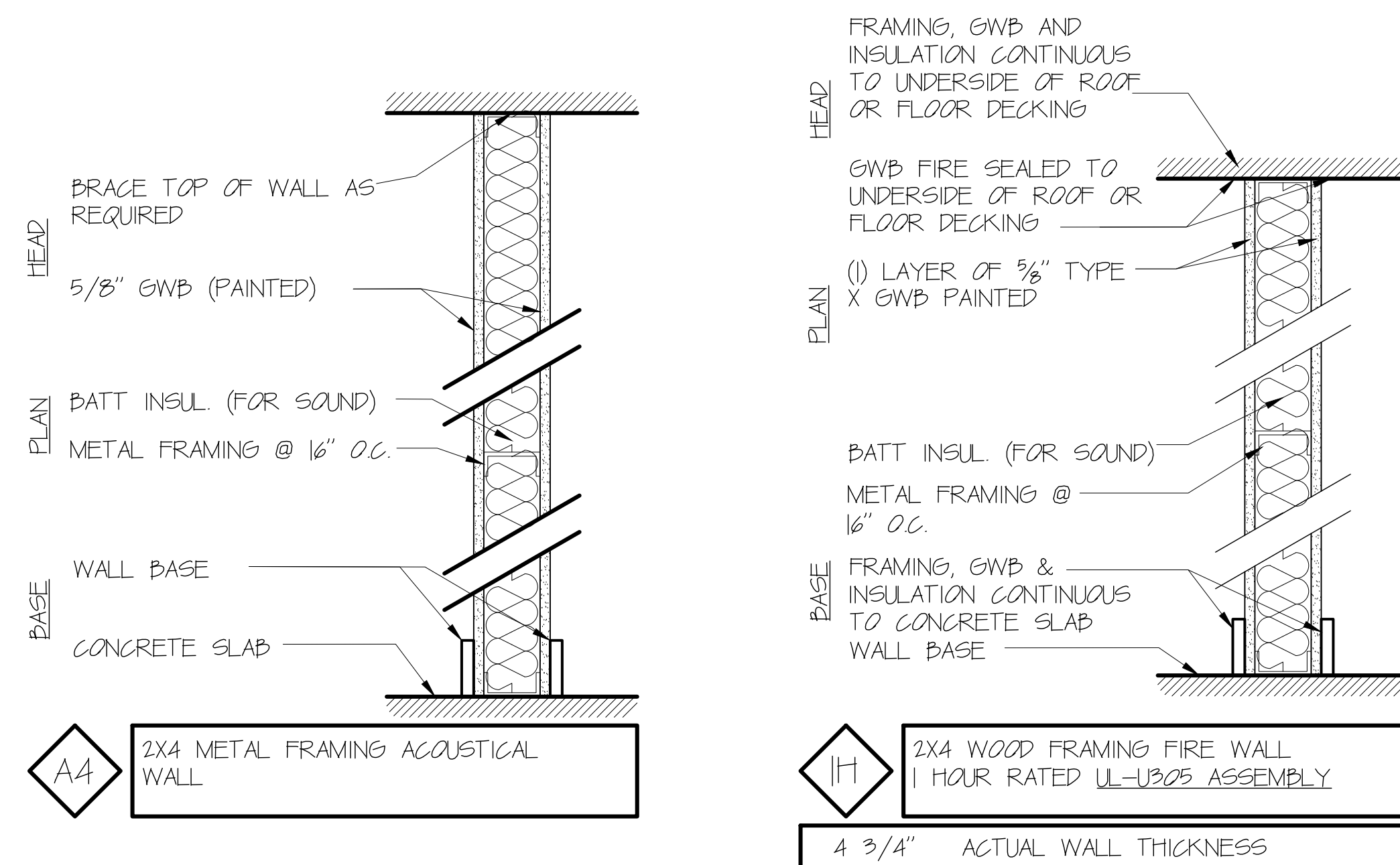
DRAWN BY
AEW

ISSUE DATE
10/23/15
SHEET SCALE
1/8" = 1'-0"

A

1.0

WALL TYPES



Code Summary:	Existing	Proposed
IBC Use	B	B
NFPA 101 Use	Business	Business
Sprinkler	Yes	Yes
Fire separation of uses	N/A	N/A
Building footprint:	12,620sf	12,620sf
Area of work:	N/A	2052sf
IBC (2009) Code Review		
304.1	Business Group B: Professional Services (physicians)	
503	Group B Type IIB	23,000sf 3 stories 55' High
601	No ratings required for Type IIB	
602.2	Construction consists of building elements of noncombustible materials.	
603	Combustible materials as allowed by this section in Type II construction	
705	Exterior wall remain unchanged	
709	Where shared corridor 1-hour rated fire barrier walls are altered repair and replace according to this section.	
803.9	Wall and ceiling finishes shall be Class C	
903.2	No sprinkler required for Group B	

907.2.2 No fire alarm required for Group B		
1004.1.1	Business areas	12620sf 100 gross
		126 occupants
1005.1	Min egress width of egress components: 25.2"	
1014.3	Max common path of egress travel:	100' (Group B w/ automatic sprinkler system)
1015.1	Two exits required from tenant space	
1015.2.1	Distance between two exits shall not be less than 1/3 the max diagonal of tenant space	
1016.1	Max exit access travel distance:	300' (Group B w/ automatic sprinkler system)
1018.2	Min corridor width:	44"
1018.4	Max dead end corridor:	50' (Group B w/ automatic sprinkler system)
NFPA 101 (2009) Code Review		
3.3.32.5 New Building		
6.1.11 Use: Business		
6.2.2.3 Ordinary Hazard of Contents		
7.3.1.2 Occupant Load:		
	Business	12620sf 100 net 126 occupants
38.1.6 No minimum construction requirements		
38.2.5.2.1 Dead end corridors: 50 ft		
38.2.5.3.1 Common Path of Travel: 100 ft		
38.2.6.3 Travel Distance: 300 ft w/ automatic sprinkler system		