

LEGEND

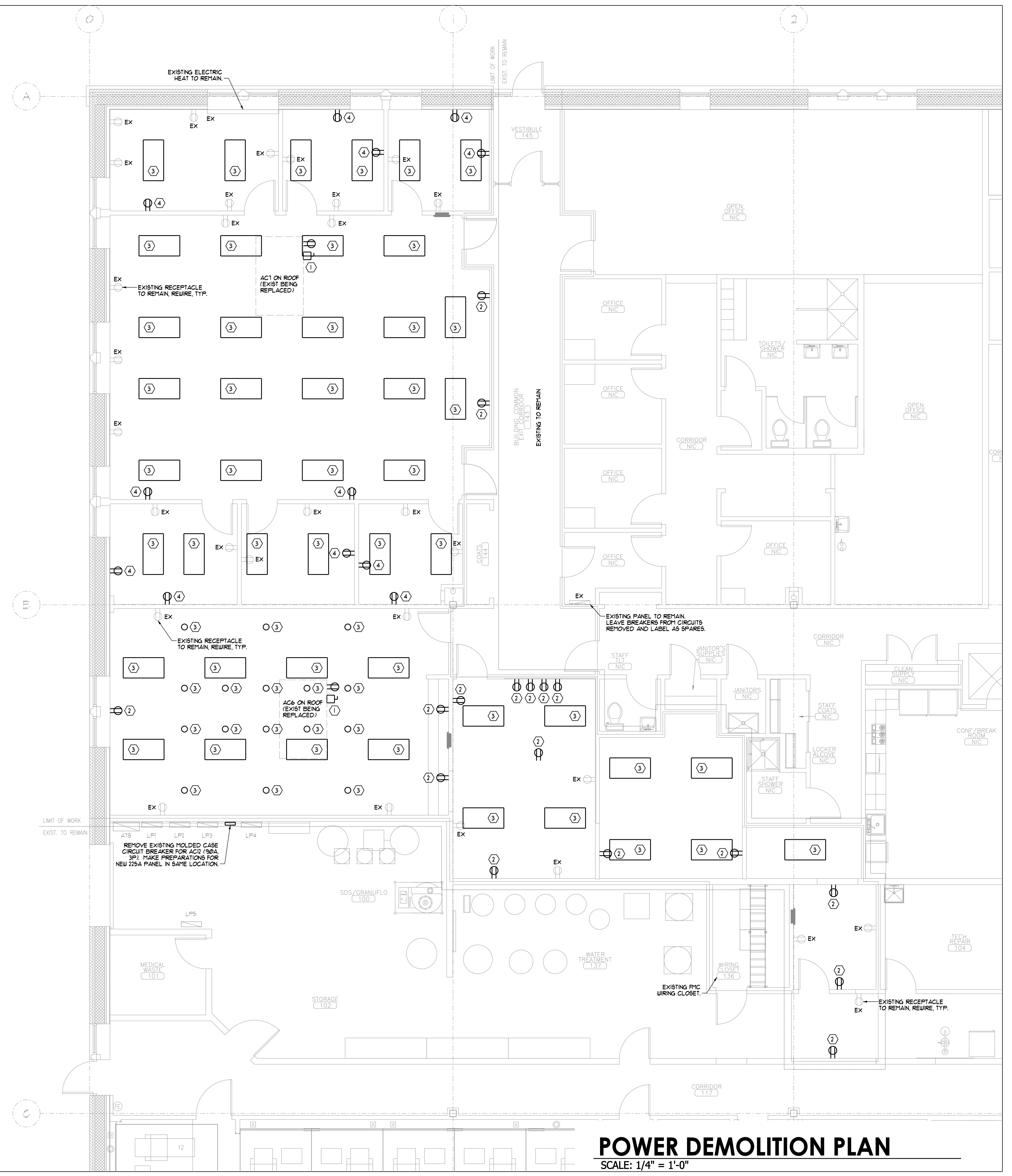
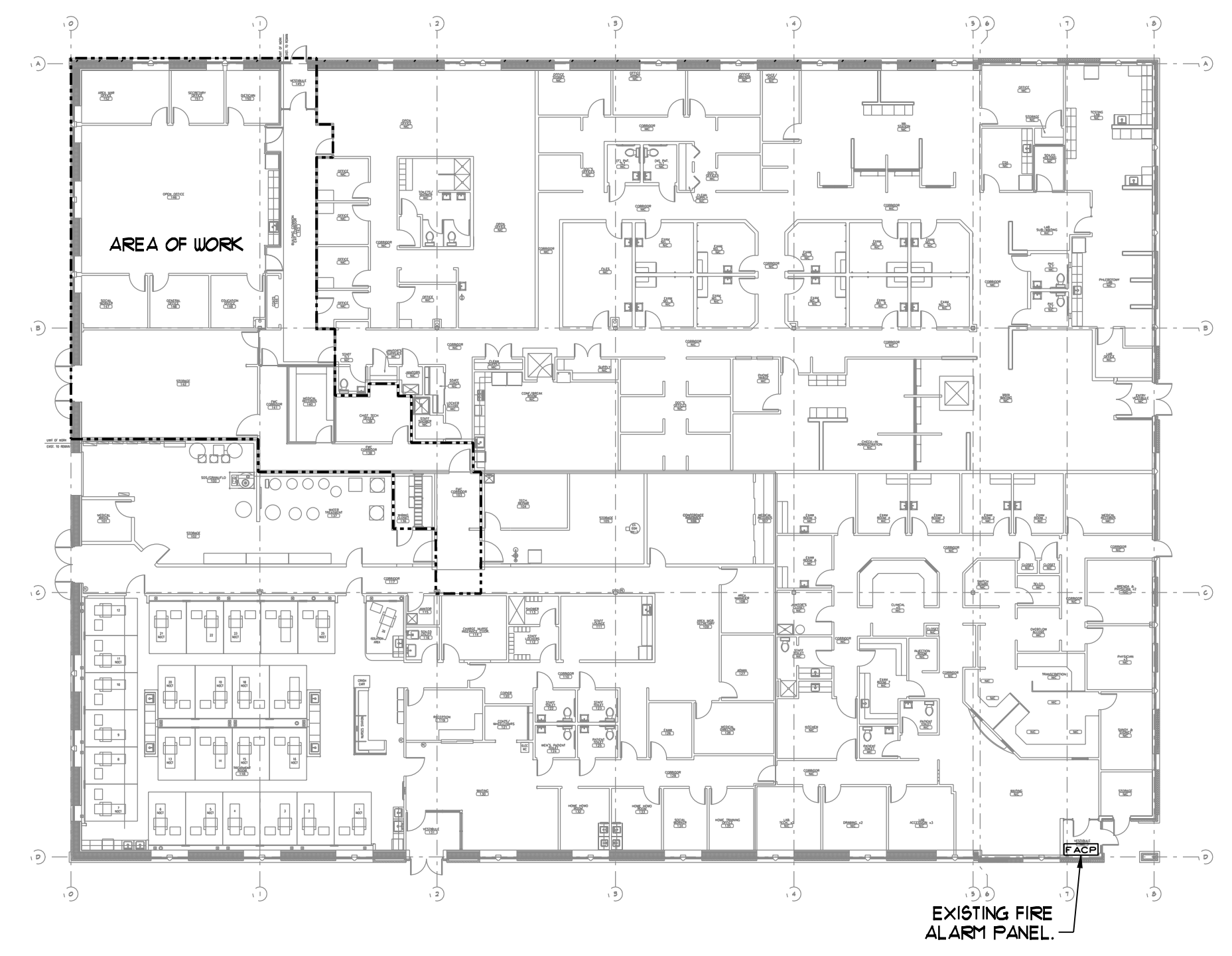
- ⊕ DUPLEX RECEPTACLE - 20A, 125V, MOUNTED AT 16" U.N.O.
"REF" = REFRIGERATOR, "CF" = COFFEE MAKER, "MW" = MICROWAVE, "WC" = WATER COOLER, "WF" = WATER FEATURE, "TC" = TIMECLOCK, "WP" = WEATHERPROOF, "EX" = EXISTING TO REMAIN, REPLACE WIRING, CONNECT TO NEW PANEL LP6.
- ⊕ DUPLEX RECEPTACLE - GROUND FAULT, 20A, 125V, MOUNTED AT 48" U.N.O.
- ⊕ DOUBLE DUPLEX RECEPTACLE - 20A, 125V, MOUNTED AT 16" U.N.O.
- ⊙ JUNCTION BOX.
- UNFUSED DISCONNECT SWITCH.
- ← HOME RUN TO PANEL - ARROWS INDICATE QUANTITY OF CIRCUITS, NUMERALS INDICATE CIRCUIT NUMBERS.
- RACEWAY & WIRING OR MC CABLE, RUN CONCEALED IN WALLS/CEILINGS. SHORT CROSS LINES INDICATE IN 3/4" C WHEN GREATER THAN TWO. ABSENCE OF CROSS LINES INDICATES 2 #12 AWG WIRES, ASTERISK INDICATES #10 AWG FOR ALL CIRCUITS CONTAINED IN HOME RUN.
- ▨ POWER PANELS, 120/208, 3PHS, 4 WIRE

ELECTRICAL DEMOLITION NOTES

- 1 REMOVE EXISTING DISCONNECT, RECEPTACLE AND ASSOCIATED WIRING BACK TO POWER PANEL.
- 2 REMOVE RECEPTACLE AND ASSOCIATED WIRING BACK TO POWER PANEL.
- 3 REMOVE LIGHT FIXTURE, SWITCH AND ASSOCIATED WIRING BACK TO POWER PANEL.
- 4 REPLACE RECEPTACLE WITH DOUBLE DUPLEX (QUAD).

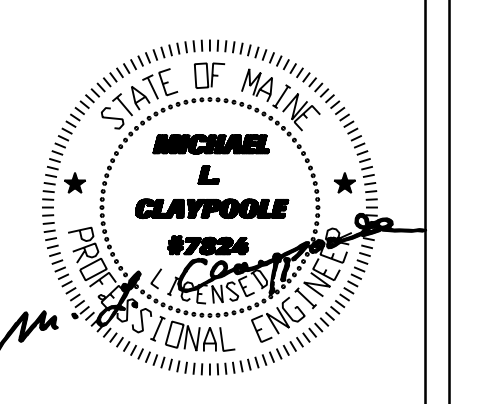
GENERAL ELECTRICAL NOTES

- 1 THE INTENT OF THE ELECTRICAL SCOPE IS TO REWORK EXISTING DEVICES FROM THE OTHER TENANTS SERVICES TO THE FRESenius SERVICES. THIS SHALL INCLUDE, BUT IS NOT LIMITED TO, RECEPTACLES, FIRE ALARM, LIGHTING AND TEL/DATA.
- 2 EXISTING POWERED DEVICES THAT ARE TO REMAIN SHALL BE RE-WIRED TO CIRCUITS IN THE NEW PANEL LP6.
- 3 EXISTING TEL/DATA DEVICES THAT ARE TO REMAIN SHALL BE REPLACED AND RE-WIRED TO THE FRESenius WIRING CLOSET.
- 4 ELECTRICAL WORK ASSOCIATED WITH ROOFTOP UNITS AC6 & AC1 SHALL BE ALTERNATE.



POWER DEMOLITION PLAN

SCALE: 1/4" = 1'-0"

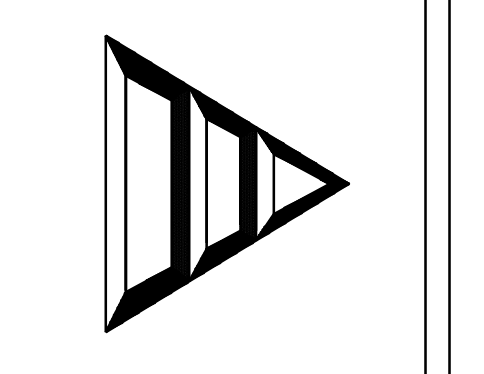


CWS
Architects

Phone: (207) 774-4441

BENNETT
ENGINEERING
MECHANICAL - ELECTRICAL
(207) 865-9475

Dialysis Clinic Fit-up:
SOUTHERN MAINE DIALYSIS
1190
1600 CONGRESS STREET
PORTLAND, MAINE 04102



Drafted By: BEI - SMR
Checked By: BEI - WSB
Date Drawn: 03/14/12
Project #: CWS# 11418

REV #	DATE	ISSUED FOR CONSTRUCTION	REVISION DESCRIPTION
03/14/12			

E2.D
Sheet Number