

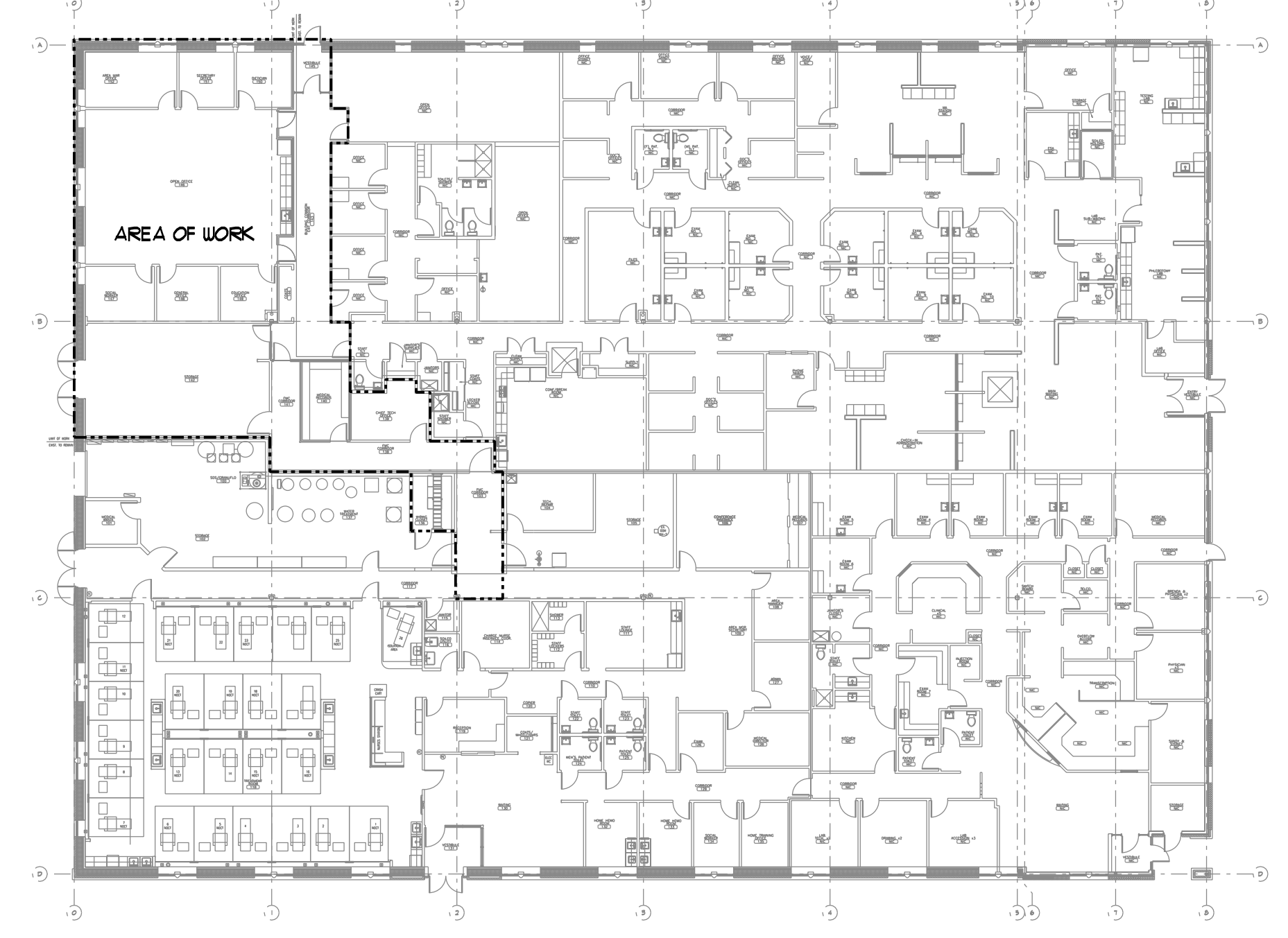
LEGEND

- ⊕ DUPLEX RECEPTACLE - 20A, 125V, MOUNTED AT 16" U.N.O.
"REF" = REFRIGERATOR, "CF" = COFFEE MAKER, "MW" = MICROWAVE, "WC" = WATER COOLER, "WF" = WATER FEATURE, "TC" = TIMECLOCK, "WP" = WEATHERPROOF, "EX" = EXISTING TO REMAIN, REPLACE WIRING, CONNECT TO NEW PANEL LP6.
- ⊕-G DUPLEX RECEPTACLE - GROUND FAULT, 20A, 125V, MOUNTED AT 48" U.N.O.
- ⊕-D DOUBLE DUPLEX RECEPTACLE - 20A, 125V, MOUNTED AT 16" U.N.O.
- ⊙ JUNCTION BOX.
- UNFUSED DISCONNECT SWITCH.
- ← HOME RUN TO PANEL - ARROWS INDICATE QUANTITY OF CIRCUITS, NUMERALS INDICATE CIRCUIT NUMBERS.
- RACEWAY & WIRING OR MC CABLE, RUN CONCEALED IN WALLS/CEILINGS. SHORT CROSS LINES INDICATE IN 3/4" C WHEN GREATER THAN TWO. ABSENCE OF CROSS LINES INDICATES 2 #12 AWG WIRES, ASTERISK INDICATES #10 AWG FOR ALL CIRCUITS CONTAINED IN HOME RUN.
- S SINGLE POLE SWITCH - 120V, 20A, SPEC GRADE, GROUNDING TYPE, MOUNTED AT 48" U.N.O. 3 = 3-WAY, 4 = 4-WAY, P = PILOT, T = 30 MIN. TIMER, WP = WEATHERPROOF.
- ▨ POWER PANELS, 120/208, 3PHS, 4 WIRE

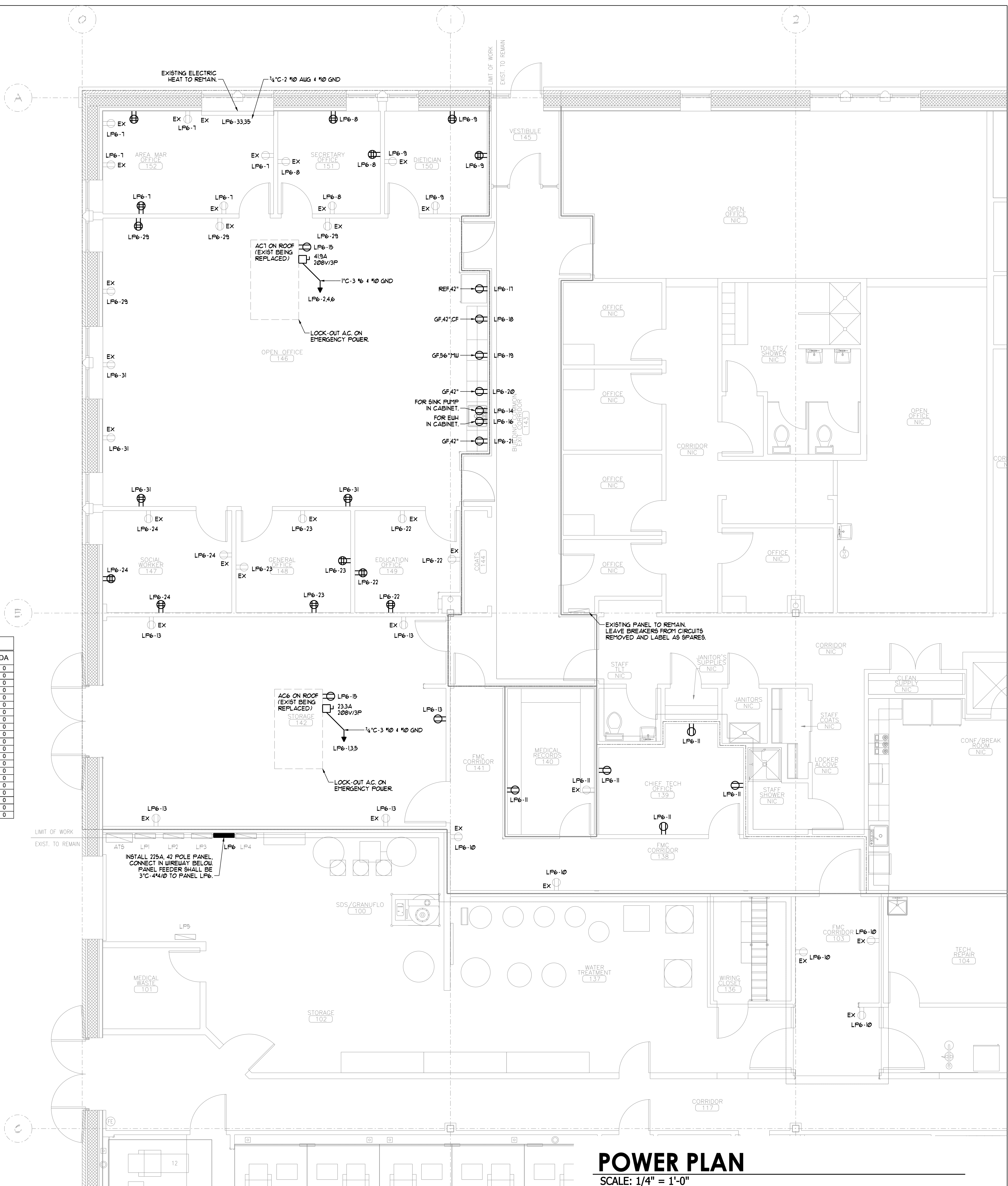
GENERAL ELECTRICAL NOTES

1. THE INTENT OF THE ELECTRICAL SCOPE IS TO REWORK EXISTING DEVICES FROM THE OTHER TENANTS SERVICES TO THE FRESENIUS SERVICES. THIS SHALL INCLUDE, BUT IS NOT LIMITED TO, RECEPTACLES, FIRE ALARM, LIGHTING AND TEL/DATA.
2. EXISTING POWERED DEVICES THAT ARE TO REMAIN SHALL BE RE-WIRED TO CIRCUITS IN THE NEW PANEL LP6.
3. EXISTING TEL/DATA DEVICES THAT ARE TO REMAIN SHALL BE REPLACED AND RE-WIRED TO THE FRESENIUS WIRING CLOSET.
4. ELECTRICAL WORK ASSOCIATED WITH ROOFTOP UNITS AC6 & AC7 SHALL BE ALTERNATE #.

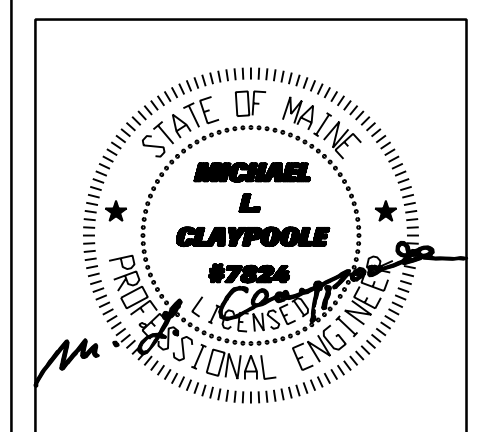
PANEL LP6 SECTION 1 120/208 3PH 4W 225 AMP MCB 42K AIC NEMA TYPE 1 (SURFACE)															
CKT #	LOAD DESCRIPTION	AF	AT	P	CA	DF	DA	CKT #	LOAD DESCRIPTION	AF	AT	P	CA	DF	DA
1	AC6	30	30	3		1.00	0	2	AC7	50	50	3		1.00	0
3						1.00	0	4						1.00	0
5						1.00	0	6						1.00	0
7	AREA MGR 152 OUTLETS	20	20	1		0.50	0	8	SECRETARY 151 OUTLETS	20	20	1		0.50	0
9	DIETICIAN 150 OUTLETS	20	20	1		0.50	0	10	CORRIDOR 103/138/141 OUTLETS	20	20	1		0.50	0
11	CHIEF TECH / MED RECORDS OUTLETS	20	20	1		0.50	0	12	SPARE	20	20	1		0.50	0
13	STORAGE 142 OUTLETS	20	20	1		0.50	0	14	SINK PUMP (144HP)	20	20	1		0.50	0
15	ROOFTOP OUTLETS	20	20	1		0.50	0	16	EWV (1500W)	20	20	1		0.50	0
17	LOUNGE REF OUTLET	20	20	1		1.00	0	18	LOUNGE COFFEE MAKER OUTLET	20	20	1		0.50	0
19	LOUNGE M W OUTLET	20	20	1		0.50	0	20	LOUNGE COUNTER OUTLET	20	20	1		0.50	0
21	LOUNGE COUNTER OUTLET	20	20	1		0.50	0	22	OFFICE 149 OUTLETS	20	20	1		0.50	0
23	OFFICE 148 OUTLETS	20	20	1		0.50	0	24	SOCIAL WORKER 147 OUTLETS	20	20	1		0.50	0
25	OFFICES 147-152 LIGHTING	20	20	1		0.80	0	26	OPEN OFFICE 146 LIGHTING	20	20	1		0.80	0
27	OFFICE 139, 140 CORR & STOR LIGHTING	20	20	1		0.80	0	28						1.00	0
29	OPEN OFFICE 146 OUTLETS	20	20	1		0.80	0	30	AC12	90	90	3		1.00	0
31	OPEN OFFICE 146 OUTLETS	20	20	1		0.80	0	32						1.00	0
33	AREA MGR 152 ELECT HEAT	20	20	1		1.00	0	34						0	0
35							0	36						0	0
37							0	38						0	0
39							0	40						0	0
41							0	42						0	0



KEY PLAN
NTS



POWER PLAN
SCALE: 1/4" = 1'-0"

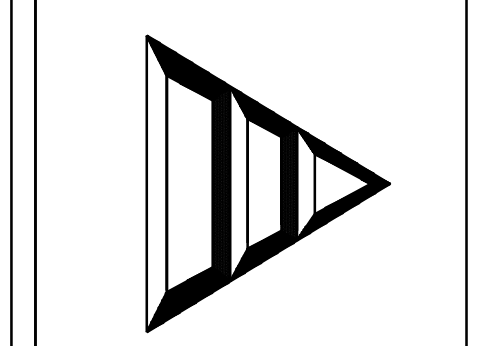


CWS Architects
Phone: (207) 774-4441

BENNETT ENGINEERING
MECHANICAL - ELECTRICAL
(207) 865-9475

SOUTHERN MAINE DIALYSIS
1600 CONGRESS STREET
PORTLAND, MAINE 04102

Dialysis Clinic Fit-up:
1190



Drafted By: BEI - SMR
Checked By: BEI - WSB
Date Drawn: 03/14/12
Project #: CWS# 11418

REV #	DATE	ISSUED FOR CONSTRUCTION	REVISION DESCRIPTION
03/14/12			

E2.1
Sheet Number