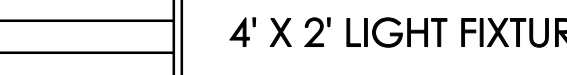
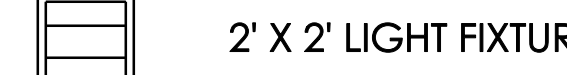
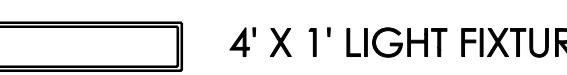







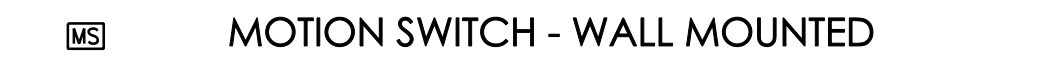




LEGEND

-  4' X 2' LIGHT FIXTURE
-  2' X 2' LIGHT FIXTURE
-  4' X 1' LIGHT FIXTURE
-  UNDER CABINET LIGHT FIXTURE
-  WALL MOUNTED LIGHT FIXTURE
-  RECESSED CAN LIGHT FIXTURE
-  PENDENT LIGHT FIXTURE
-  WALL SCONCE LIGHT FIXTURE
-  EXIT LIGHT FIXTURE
-  EMERGENCY (BATTERY) LIGHT FIXTURE
-  MOTION SWITCH - CEILING MOUNTED DUAL TECHNOLOGY
-  MOTION SWITCH - WALL MOUNTED
-  WALL MOUNTED SWITCH

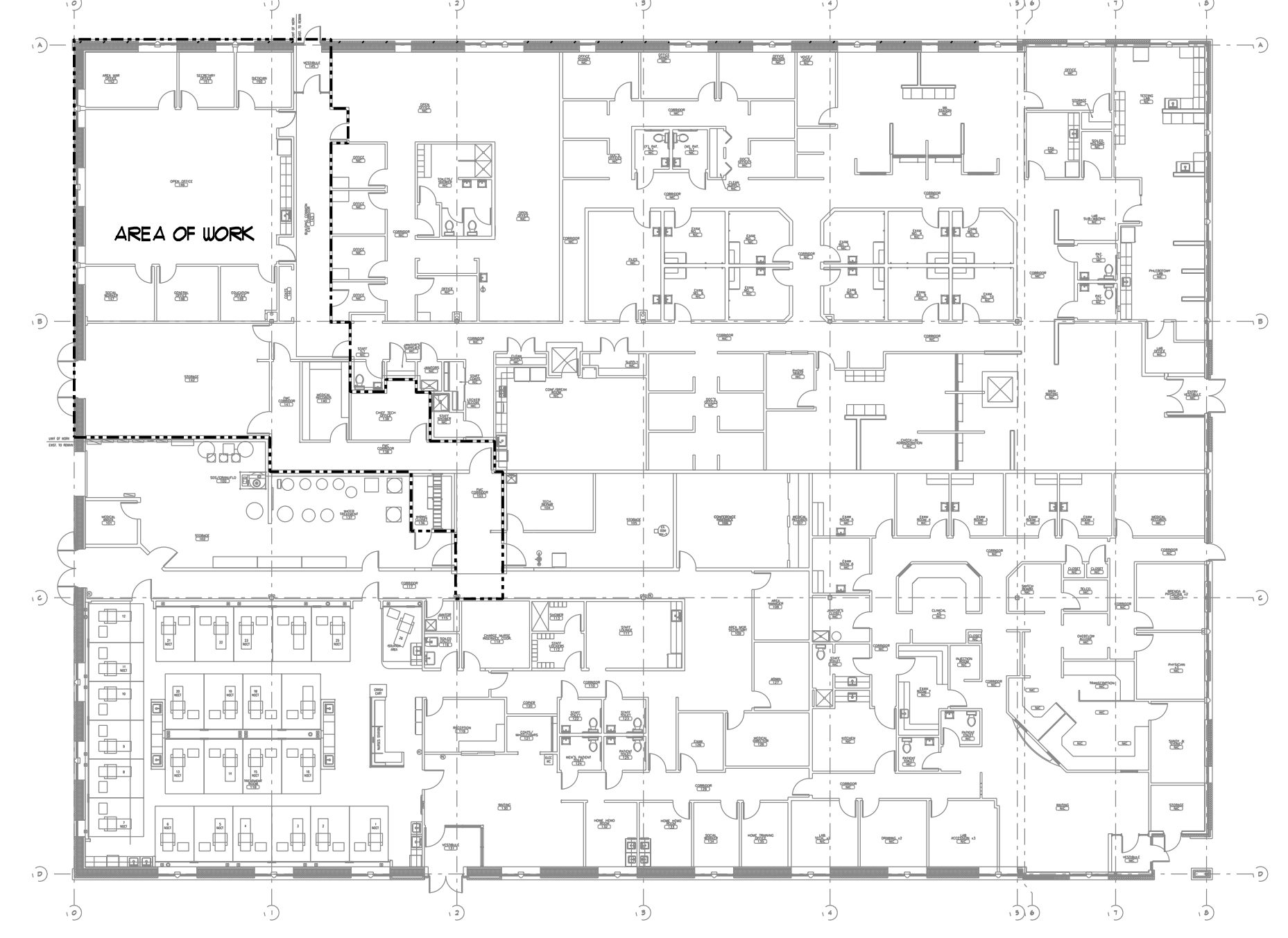
LIGHTING FIXTURE SCHEDULE

TYPE	DESCRIPTION	LAMPS QUANTITY & TYPE	REMARKS
C	METALUX 2RDI-332-RP-EB01	(3) T-8, 3500K	2x4 LAY-IN, ELEC. BALLAST
CI	LENSED TROFFER	-	MATCH EXISTING FIXTURES, 2x4 LAY-IN, ELEC. BALLAST
E	LITHONIA 2UC-1-11-120-SUR-GEB10	(1) T8, 3500K	UNDER CABINET MOUNT W/ ROCKER SWITCH, ELEC. BALLAST
N	LED EXIT SIGN, WHITE/RED	LED'S INCLUDED	LED, CEILING OR WALL MOUNT, PROVIDE ARROWS AS INDICATED

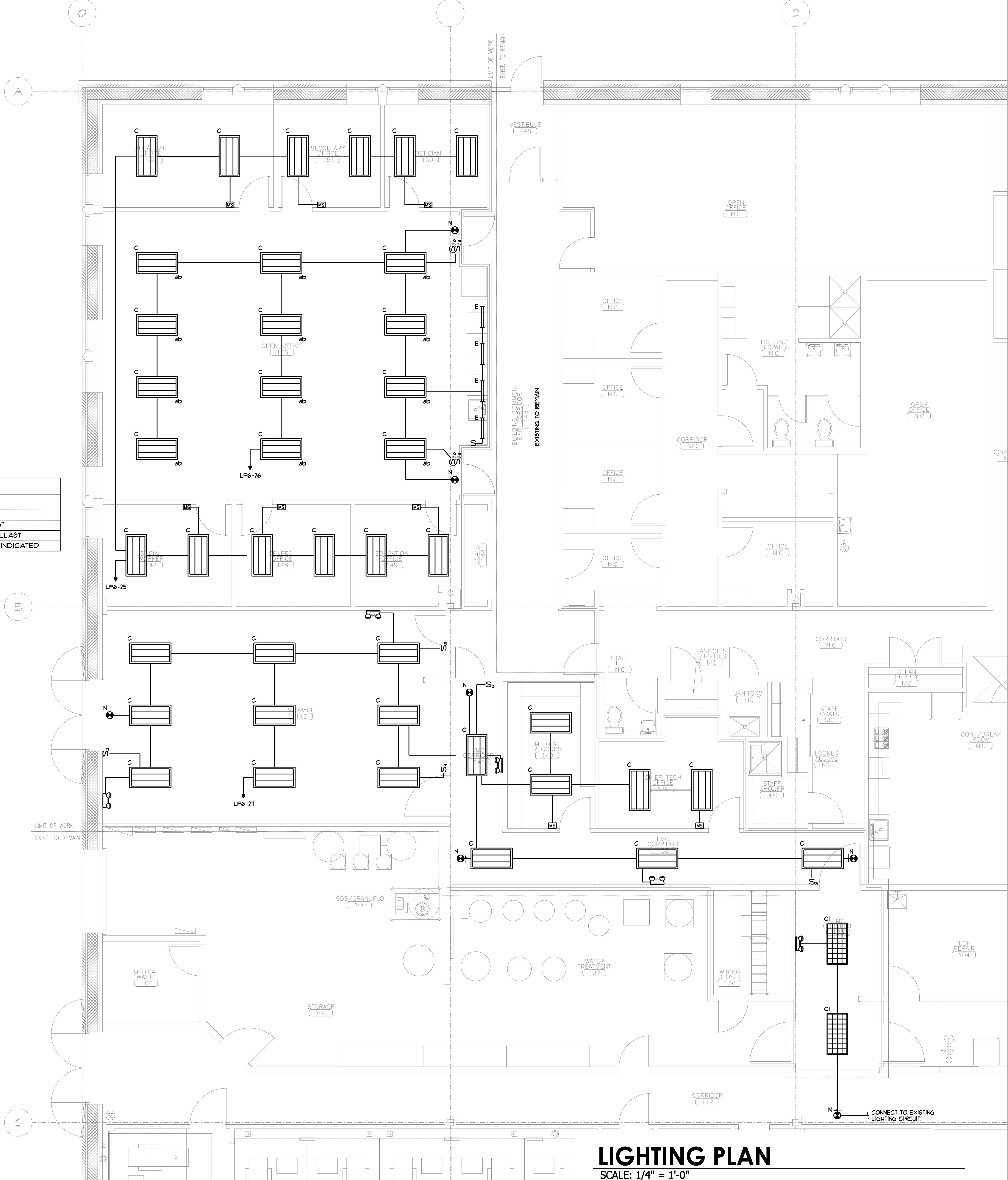
SUBMIT DATA ON FIXTURES, BALLASTS AND LAMPS. ALL FIXTURES INDV. PROVIDE PROGRAM START BALLASTS FOR FIXTURES CONNECTED TO MOTION SENSORS. PROVIDE INSTANT START BALLASTS FOR STANDARD SWITCHING FIXTURES.

GENERAL ELECTRICAL NOTES

1. THE INTENT OF THE ELECTRICAL SCOPE IS TO REWORK EXISTING DEVICES FROM THE OTHER TENANTS SERVICES TO THE FRESenius SERVICES. THIS SHALL INCLUDE, BUT IS NOT LIMITED TO, RECEPTACLES, FIRE ALARM, LIGHTING AND TEL/DATA.
2. EXISTING POWERED DEVICES THAT ARE TO REMAIN SHALL BE RE-WIRED TO CIRCUITS IN THE NEW PANEL LP6.
3. EXISTING TEL/DATA DEVICES THAT ARE TO REMAIN SHALL BE REPLACED AND RE-WIRED TO THE FRESenius WIRING CLOSET.
4. ELECTRICAL WORK ASSOCIATED WITH ROOFTOP UNITS AC6 & AC1 SHALL BE ALTERNATE #1.

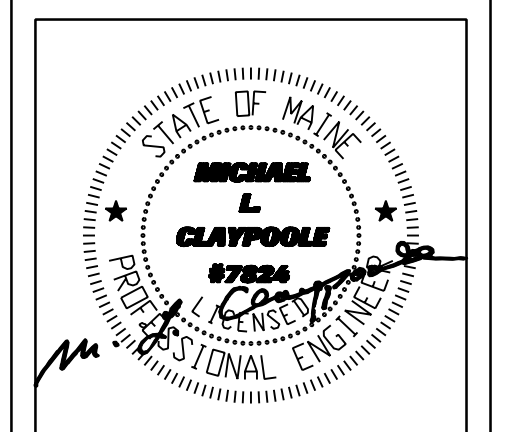


KEY PLAN
NTS

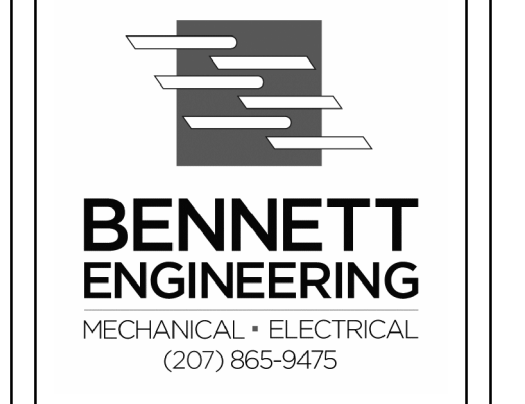


LIGHTING PLAN

SCALE: 1/4" = 1'-0"

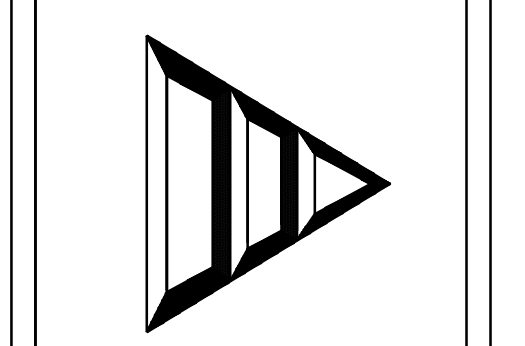


CWS Architects
Phone: (207) 774-4441



BENNETT ENGINEERING
MECHANICAL - ELECTRICAL
(207) 865-9475

Dialysis Clinic Fit-up:
SOUTHERN MAINE DIALYSIS
1600 CONGRESS STREET
PORTLAND, MAINE 04102



1190

Drafted By: BEI - SMR
Checked By: BEI - WSB
Date Drawn: 03/14/12
Project #: CWS# 11418

REV #	DATE	ISSUED FOR CONSTRUCTION	REVISION DESCRIPTION
03/14/12			

E2.0
Sheet Number

1/2/2011 11:29 AM