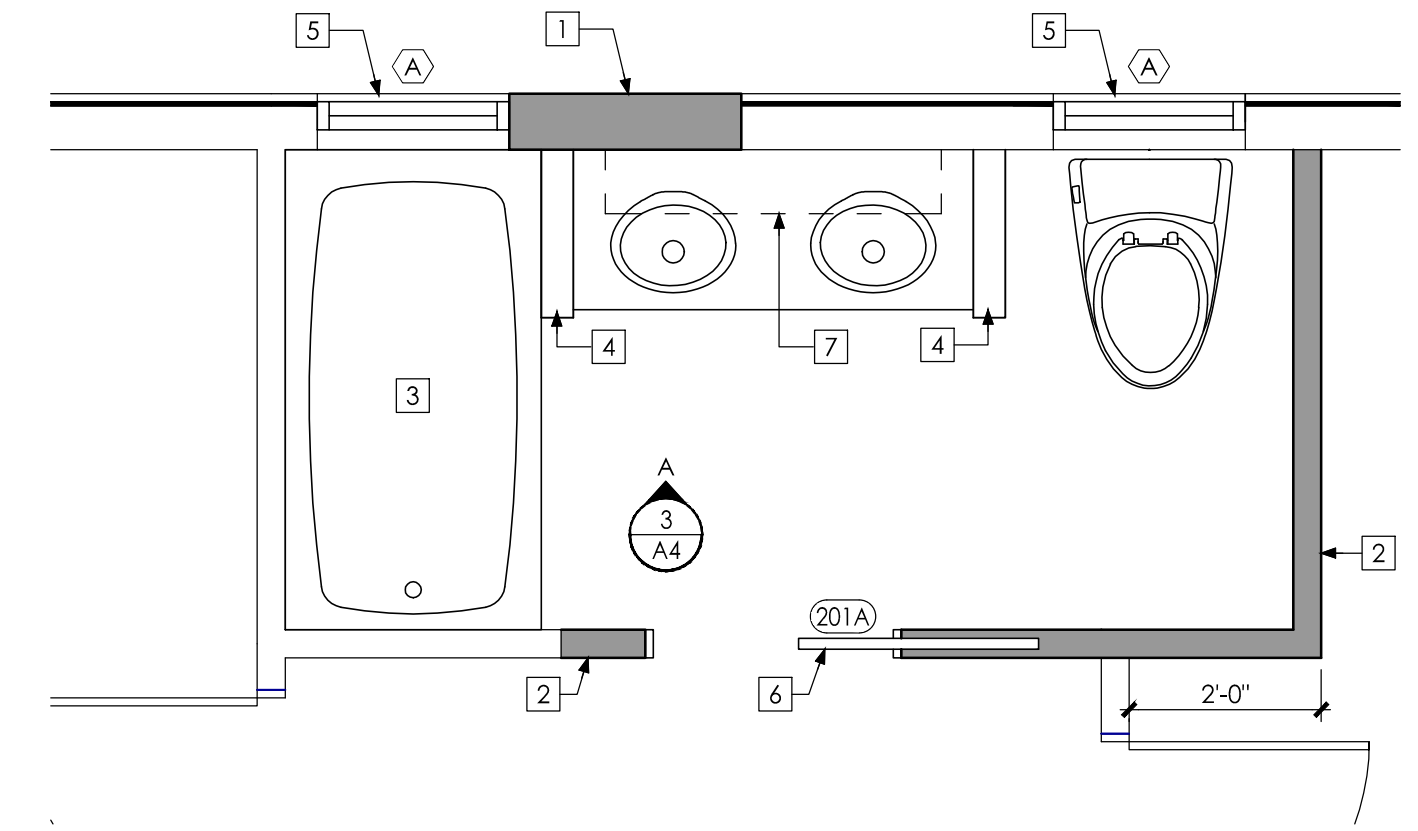
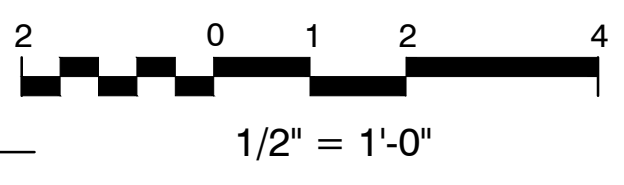


DEMO KEYNOTES

- 1 REMOVE EXISTING WINDOW
- 2 REMOVE EXISTING PLUMBING FIXTURE
- 3 REMOVE EXISTING EXTERIOR WALL - COORDINATE W/ NEW WINDOW OPENINGS
- 4 REMOVE EXISTING INTERIOR WALL
- 5 REMOVE EXISTING DOOR

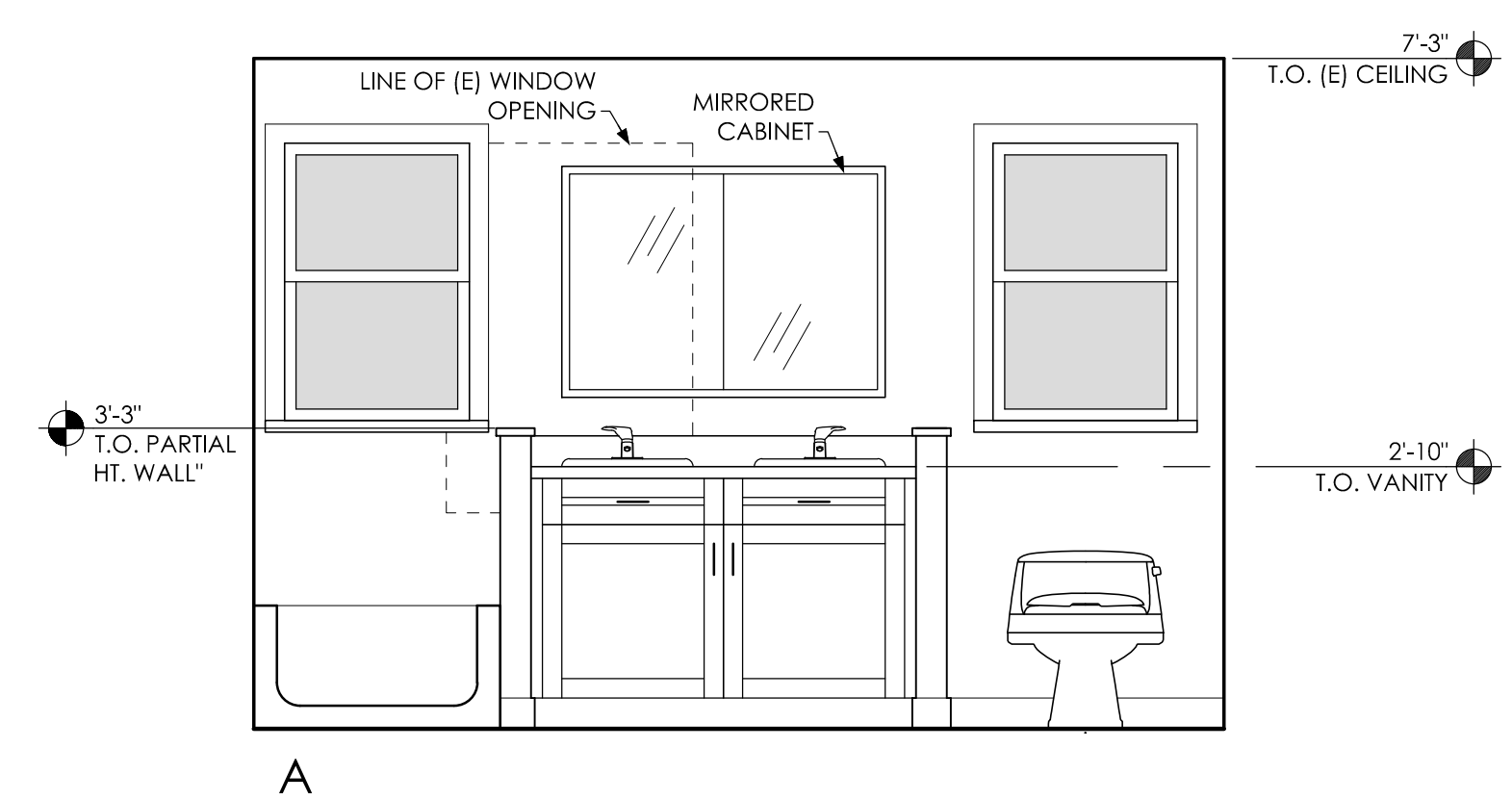
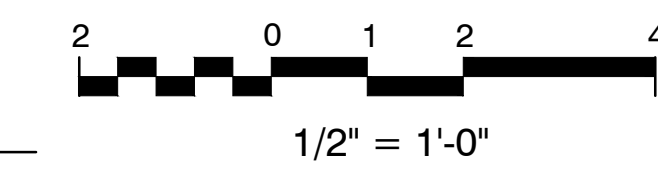
1
A4 **SECOND FLOOR BATHROOM DEMOLITION PLAN**
SCALE: 1/2" = 1'-0"



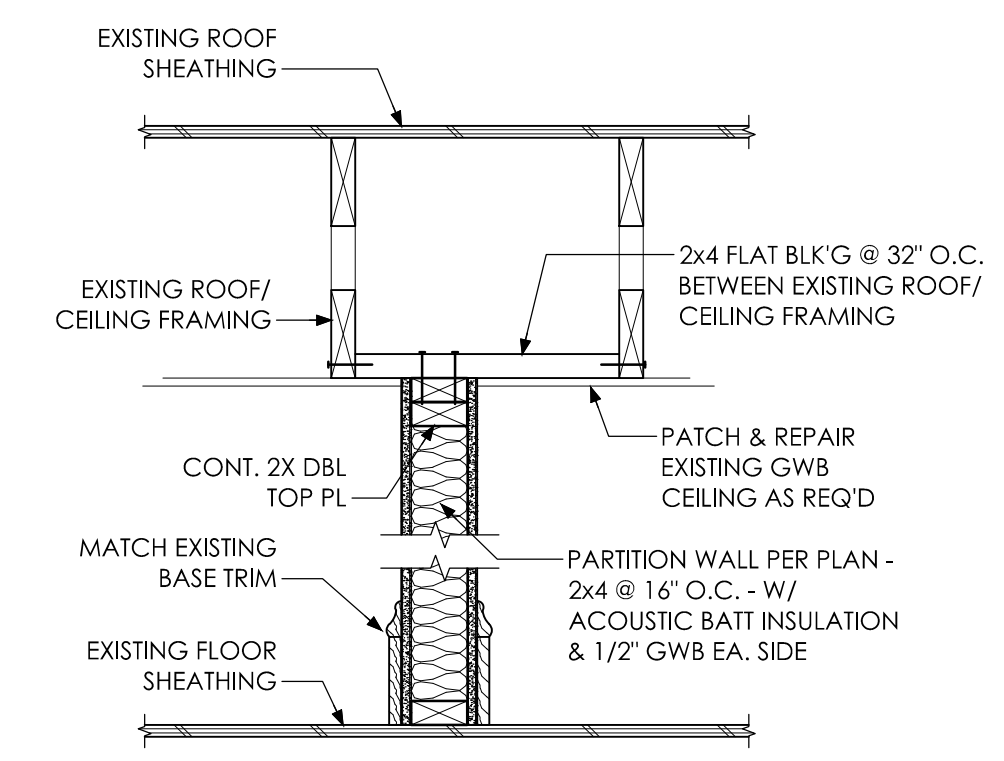
PLAN KEYNOTES

- 1 NEW EXTERIOR INFILL WALL W/ MIN. R-20 FG BATT INSULATION PER IECC 2009 TABLE 402.1.1
- 2 NEW INTERIOR WALL - SEE DETAIL 4/A4
- 3 NEW OR RELOCATED BATHTUB
- 4 NEW PARTIAL HEIGHT WALLS
- 5 NEW WINDOW - CENTER OVER NEW PLUMBING FIXTURES - SEE WINDOW SCHEDULE
- 6 NEW POCKET DOOR - DOOR OPENING CENTERED ON VANITY - SEE DOOR SCHEDULE
- 7 LINE OF MIRRORED CABINET ABOVE VANITY

2
A4 **SECOND FLOOR BATHROOM RENOVATION PLAN**
SCALE: 1/2" = 1'-0"



3
A4 **SECOND FLOOR BATHROOM ELEVATION**
SCALE: 1/2" = 1'-0"



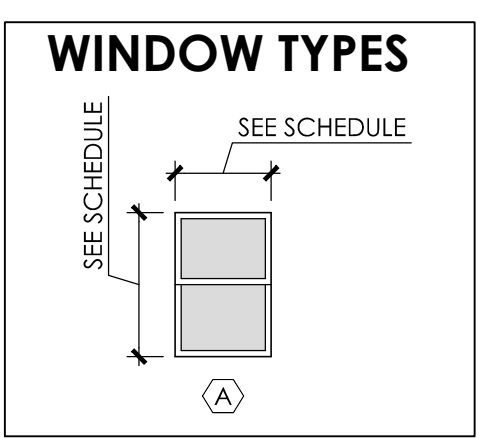
4
A4 **PARTITION WALL PARALLEL TO ROOF FRAMING**
SCALE: 1" = 1'-0"

WINDOW SCHEDULE									
WINDOW TYPE (A)	FRAME SIZE (WXH)	OPERATION	FRAME MATERIAL	FINISH	HEAD HGL. A.F.F.	ARCH. DETAIL (AD/XX)			NOTES
						HEAD	JAMB	SILL	
A	2'-0" x 3'-0"	SH	V	FF	-	-	-	-	1, 2, 3

ABBREVIATIONS:
AL: ALUMINUM
F: FIXED
FF: FACTORY FINISH

NOTES:
SH: SINGLE HUNG
SL: SLIDER
V: VINYL

1. MATCH HEAD HEIGHT OF EXISTING ADJACENT WINDOWS.
2. MATCH HEAD, JAMB, & SILL CONDITIONS OF EXISTING WINDOWS.
3. PROVIDE DOUBLE PANE GLAZING W/ MIN. U-FACTOR 0.55 PER IECC 2009 TABLE 303.1.3(1)



DOOR SCHEDULE												
DOOR NO.	NOMINAL DOOR SIZE WIDTH X HT.	DOOR			FRAME			HARDWARE GROUP	ARCH. DETAIL (AD/XX)			NOTES
		TYPE	MATL	FIN	TYPE	MATL	FIN		HEAD	JAMB	SILL	
201A	2'-6" x 6'-8"	A	W	PT	-	W	PT	-	-	-	-	1, 2

- NOTES:
1. POCKET DOOR
2. INTERIOR DOOR(S) TO BE SOLID PAINT GRADE 6-PANEL - TO MATCH EXISTING

ABBREVIATIONS:
AL: ALUMINUM
FF: FACTORY FINISH
HS: HOLLOW STEEL
PT: PAINT

GENERAL NOTES:
A. SEE PLANS FOR SWING
B. SEE PLANS & WALL TYPES FOR FRAME DEPTHS

