

Maine Eye Center - Stroudwater Crossing
PORTLAND, MAINE

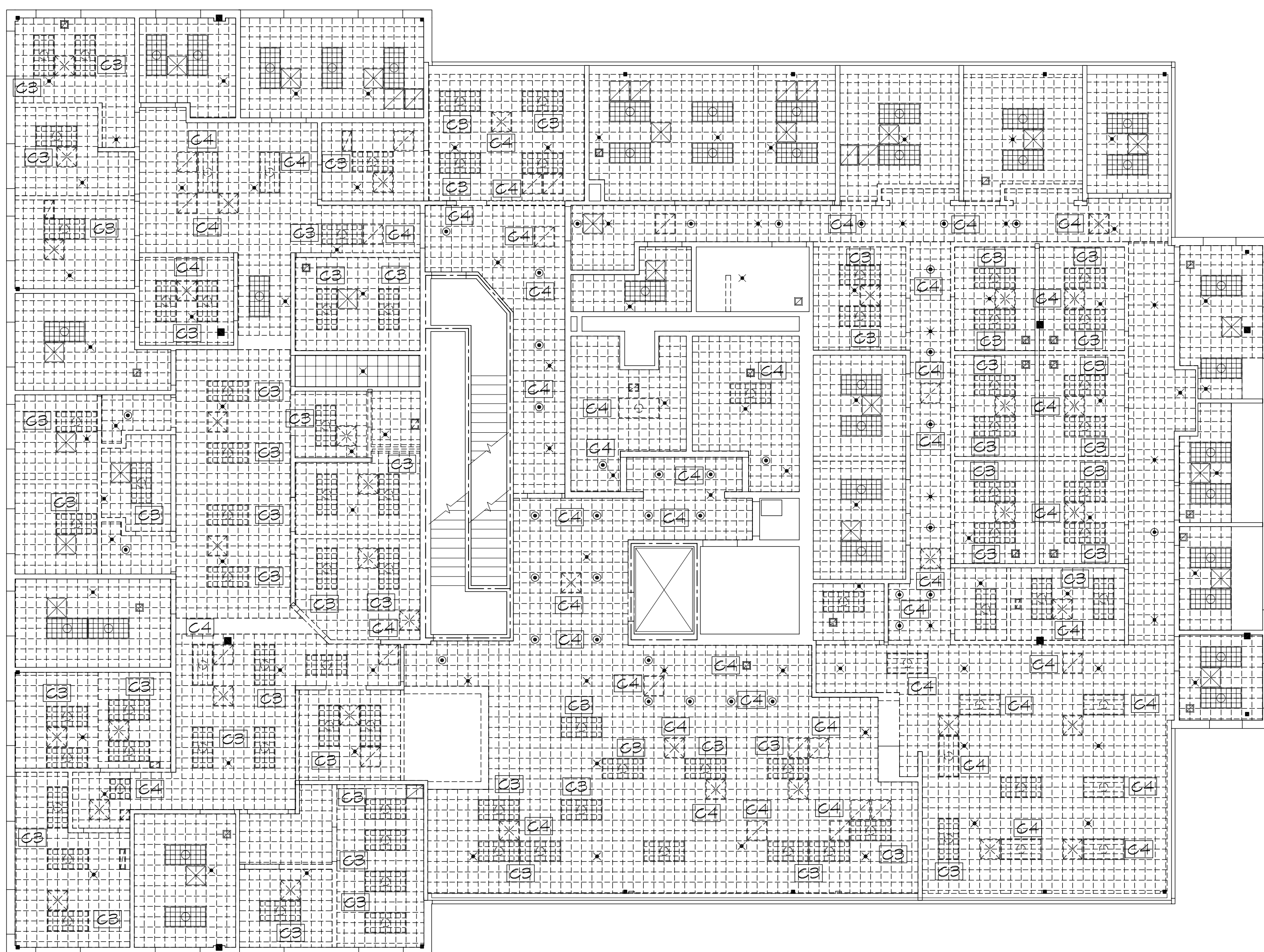
JOB NO. 09-006
DRWN. CHK AJR
SCALE: 1/8"=1'-0"
ISSUE PERMIT SET 19 MARCH 2009
TITLE DEMOLITION PLANS
SHEET

DI

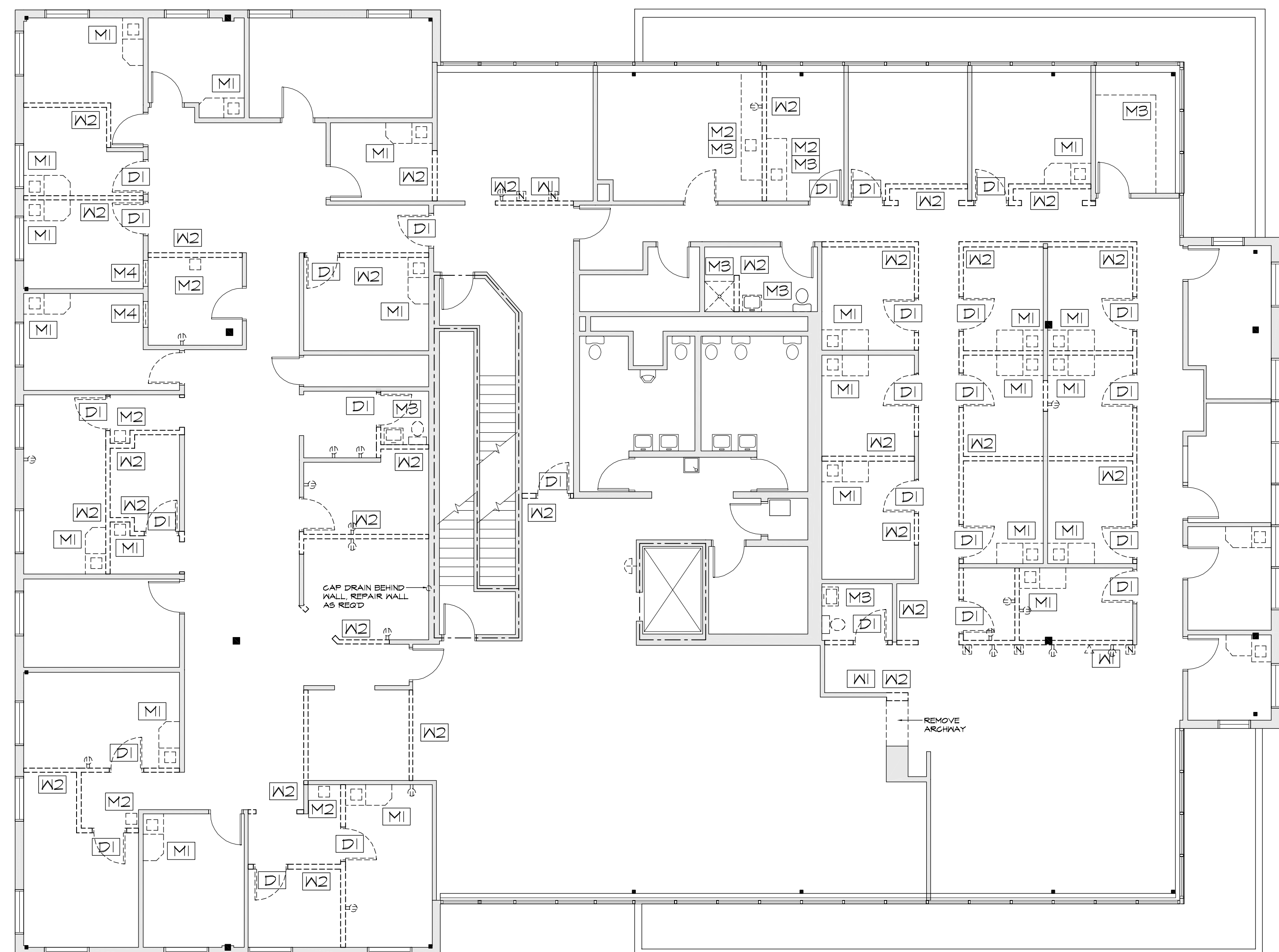
- GENERAL DEMOLITION AND REMOVAL NOTES**
1. THE DEMOLITION DRAWINGS PROVIDE GENERAL COORDINATION INFORMATION ONLY AND ARE SCHEMATIC IN NATURE. THEY DO NOT IDENTIFY ALL INDIVIDUAL ITEMS TO BE REMOVED. IN INSTANCES WHERE WALLS ARE INDICATED FOR REMOVAL REMOVE ALL DOORS, WINDOWS AND MISCELLANEOUS HARDWARE ELECTRICAL AND MECHANICAL ITEMS CONTAINED WITHIN THE WALL. REMOVE ANY EXISTING CONSTRUCTION WHICH LOGICALLY IS IN THE WAY OF NEW CONSTRUCTION OR PROHIBITS THE NEW CONSTRUCTION.
 2. PROTECT FROM DAMAGE AND WEATHER ANY EXISTING BUILDING COMPONENTS, WHICH ARE EXPOSED AS A RESULT OF DEMOLITION OR REMOVALS.
 3. REMOVE ALL EXISTING PLUMBING ELECTRICAL AND MECHANICAL ITEMS NOT TO BE USED IN NEW CONSTRUCTION. COORDINATE THE INFORMATION ON DRAWINGS.
 4. REMOVAL OF THE MATERIALS AS INDICATED SHALL BE DONE WITHOUT DISTURBING ADJACENT SURFACES TO REMAIN OR THE CURRENT CONDITION OF THE BUILDING ELEMENTS.
 5. REMOVE ALL DAMAGED AND/OR DISCARDED BUILDING CONSTRUCTION MATERIAL FROM CONCEALED SPACES. PRIOR TO CLOSING OR SEALING OFF CONCEALED SPACES.
 6. ALL DEMOLITION/REMOVAL DEBRIS IS THE PROPERTY OF THE CONTRACTOR UNLESS NOTED OTHERWISE.
 7. SALVAGE CERTAIN COMPONENTS FOR LIMITED REUSE TO MATCH EXISTING CONDITIONS FOR PATCH AND REPAIR AS INDICATED.
 8. PLUMBING AND HEATING SHAFT DEMOLITION NOT SHOWN ON DEMOLITION PLANS COORDINATE ADDITIONAL DEMOLITION TO ACCOMMODATE MECHANICAL AND ELECTRICAL.
 9. OPEN HALL TO ADD BLOCKING / SUPPORT FOR DOOR JAMB SUPPORT. TO CONNECT NEW HALL TO STD WALL OF EXISTING HALL. TO ADD BLOCKING FOR CABINETS AT EXISTING HALL.

- GENERAL PATCHING AND REPAIR NOTES**
1. DAMAGES, EXISTING BUILDING OR SITE COMPONENTS, NOT SCHEDULED FOR WORK, WHICH ARE DAMAGED SHALL BE REPLACED OR RESTORED TO ORIGINAL CONDITION BY METHODS APPROVED BY THE ARCHITECT.
 2. PATCHING: AFTER REMOVAL OF BUILDING COMPONENTS AS INDICATED, PATCH AND PREPARE THE REMAINING EXISTING EXPOSED SURFACES TO RECEIVE NEW WORK AND FINISH. FOR EXAMPLE, LEVEL FLOORS AT WALL REMOVALS, TOOTH-IN NEW CMU AT OPENINGS, PIECE-IN NEW PLASTER BACKING AND FINISH FLUSH, PIECE IN NEW CEILING SUSPENSION SYSTEM.
 3. WHERE NEW CONSTRUCTION EITHER INFILLS OR ABUTS EXISTING CONSTRUCTION, THE FINISHED FACES SHALL ALIGN, AND THE SURFACES SHALL BE FINISHED TO MATCH.
 4. PATCH AND LEVEL EXISTING FLOORS TO RECEIVE NEW FINISHES AS INDICATED IN THE ROOM FINISH SCHEDULE.
 5. AFTER REMOVAL OF BUILDING COMPONENTS, ANY RESULTING HOLES SHALL BE PATCHED, MAINTAIN EXISTING FIRE- OR SMOKE-RATINGS AS INDICATED. SUCH PATCHES SHALL BE FLUSH WITH ADJACENT SURFACES AND FINISHED TO MATCH.

WALLS:	FLOORS:
W1 REMOVE WALL AS REQUIRED FOR NEW OPENINGS	F1 REMOVE FLOORING AS REQUIRED TO TIE INTO EXISTING SERVICES
W2 REMOVE WALL AS REQUIRED	CASEWORK / PLUMBING:
CELLINGS:	M1 REMOVE DOCTOR'S DESK, SALVAGE AND REUSE BASE CABINET AND HALL CABINET WHERE SHOWN ON PLAN
C1 REMOVE CEILING TILE AND GRID IN THEIR ENTIRETY	M2 REMOVE EXISTING PLUMBING
C2 REMOVE CEILING TILES, REPAIR, REPLACE CEILING SUSPENSION TRUCK AS REQUIRED FOR NEW CEILING	M3 REMOVE EXISTING CASEWORK
C3 SALVAGE LIGHT FIXTURE, CLEAN AND REPAIR FOR REUSE AS SHOWN ON CEILING PLAN. SELECT BEST FIXTURES FOR REUSE - REMOVE UNUSED	DOORS:
C4 REMOVE UNUSED CEILING MOUNTED ITEMS	D1 SALVAGE DOOR FOR REUSE AS INDICATED ON PLAN, REMOVE UNUSED DOORS, FRAMES, HARDWARE AND THRESHOLD IF ANY.



2 CEILING DEMO PLAN
1/8"=1'-0"



1 FLOOR DEMO PLAN
1/8"=1'-0"

Mar 19, 2009 - 2:04pm
\\Feb161\Data2\Master Proj Files2\Maine Eye Center\Maine Eye Stroudwater\CAD\MEEYE-plan.dwg