



**PDT**  
**ARCHITECTS**  
 49 DARTMOUTH STREET  
 PORTLAND, MAINE 04101  
 207-775-1059  
 www.pdtarch.com

**COPYRIGHT 2009**  
 PDT Architects  
 Reuse or reproduction of the  
 contents of this document is not  
 permitted without written  
 permission of PDT Architects.

**Maine Eye Center - Stroudwater Crossing**  
 PORTLAND, MAINE

JOB NO.  
09-006

DRWN. CHK  
AJR

SCALE:  
1/8"=1'-0"

ISSUE  
07 APRIL 2009

TITLE  
DEMOLITION PLANS

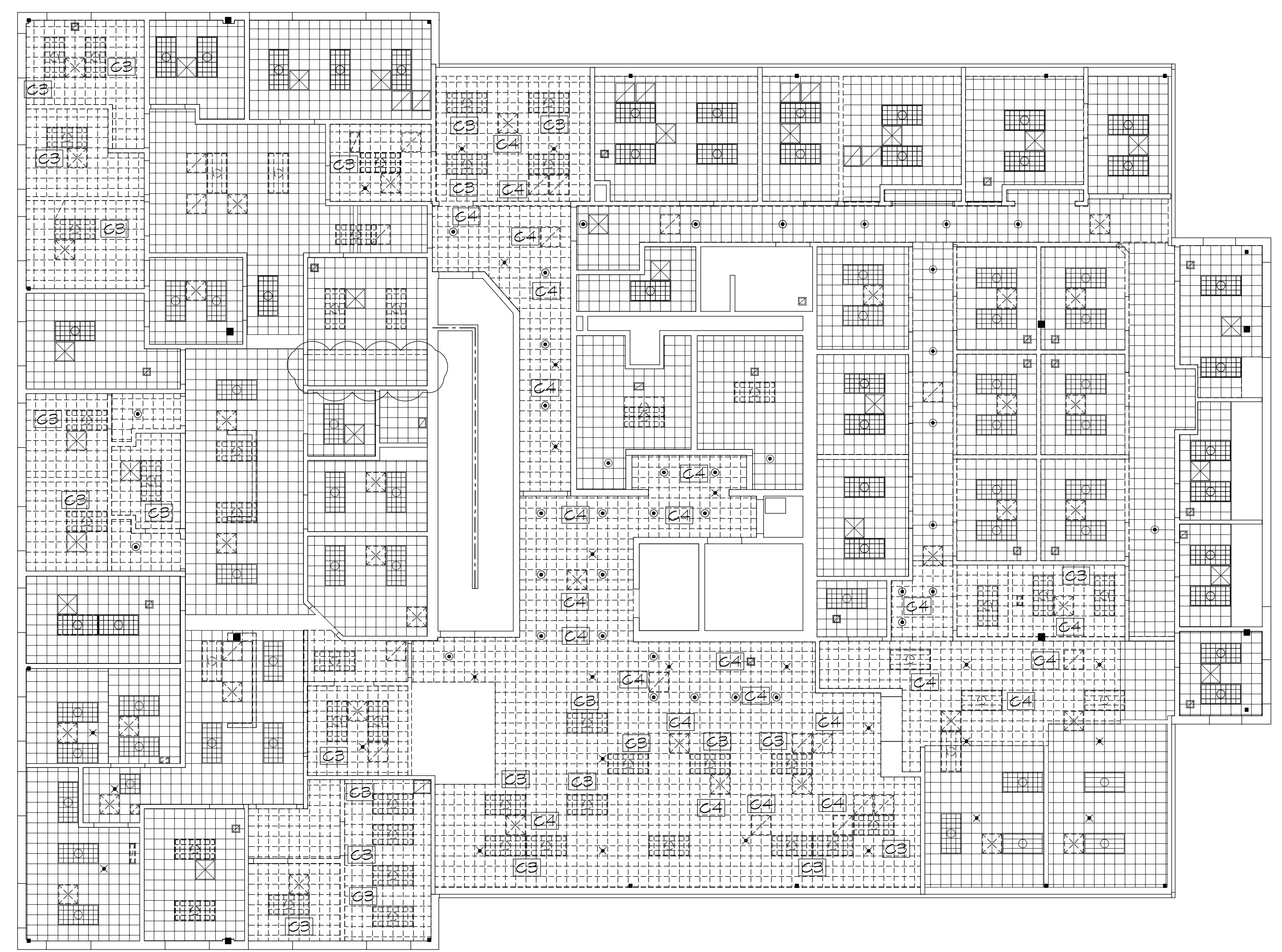
SHEET

DI

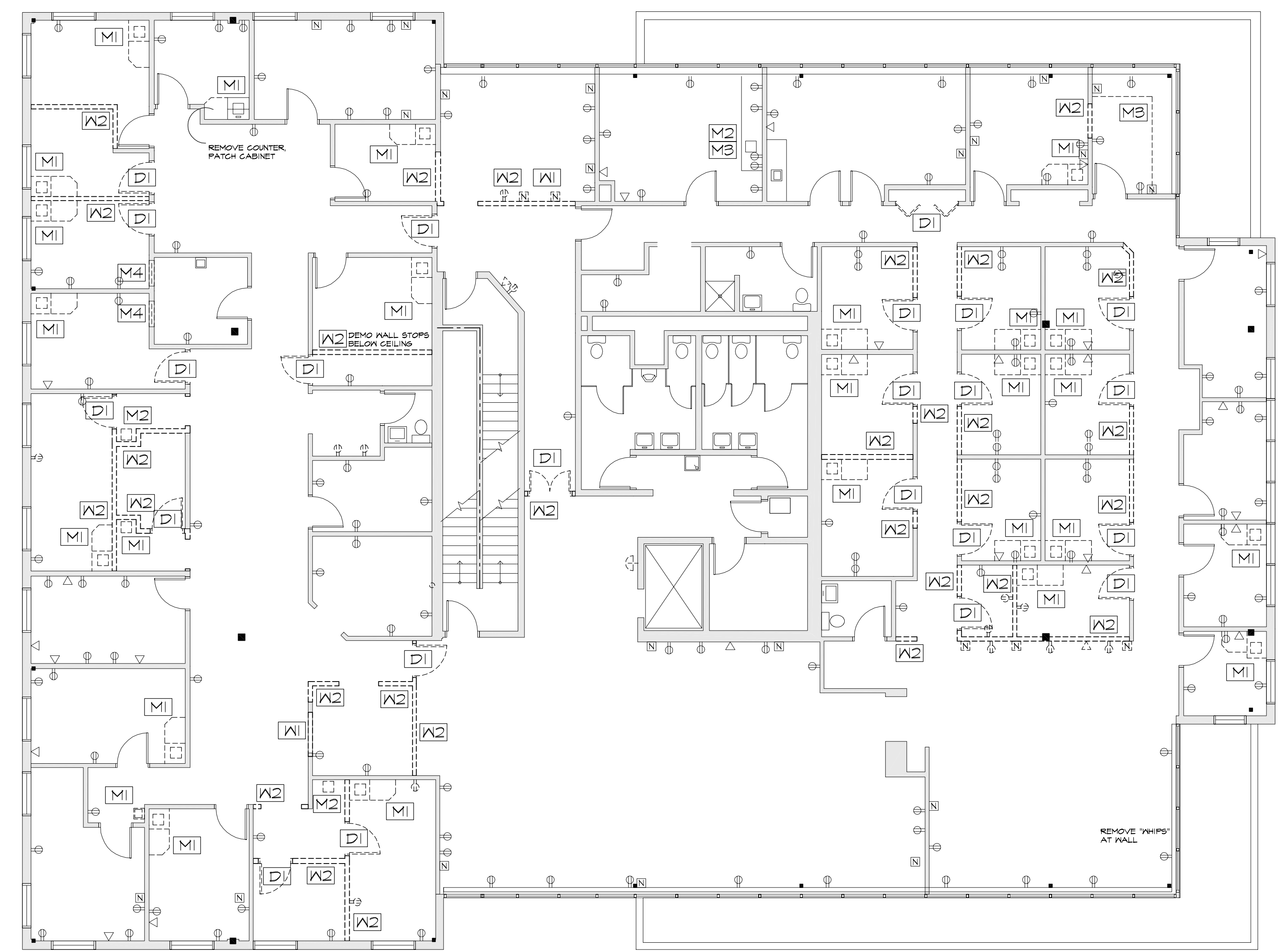
- GENERAL DEMOLITION AND REMOVAL NOTES**
1. THE DEMOLITION DRAWINGS PROVIDE GENERAL COORDINATION INFORMATION ONLY, AND ARE SCHEMATIC IN NATURE. THEY DO NOT IDENTIFY ALL INDIVIDUAL ITEMS TO BE REMOVED. IN INSTANCES WHERE WALLS ARE INDICATED FOR REMOVAL, REMOVE ALL DOORS, WINDOWS AND MISCELLANEOUS HARDWARE, ELECTRICAL AND MECHANICAL ITEMS CONTAINED WITHIN THE WALL. REMOVE ANY EXISTING CONSTRUCTION WHICH LOGICALLY IS IN THE WAY OF NEW CONSTRUCTION OR PROHIBITS THE NEW CONSTRUCTION.
  2. PROTECT FROM DAMAGE AND WEATHER ANY EXISTING BUILDING COMPONENTS, WHICH ARE EXPOSED AS A RESULT OF DEMOLITION OR REMOVALS.
  3. REMOVE ALL EXISTING PLUMBING, ELECTRICAL AND MECHANICAL ITEMS NOT TO BE USED IN NEW CONSTRUCTION. COORDINATE THE INFORMATION ON DRAWINGS.
  4. REMOVAL OF THE MATERIALS AS INDICATED SHALL BE DONE WITHOUT DISTURBING ADJACENT SURFACES TO REMAIN OR THE CURRENT CONDITION OF THE BUILDING ELEMENTS.
  5. REMOVE ALL DAMAGED AND/OR DISCARDED BUILDING CONSTRUCTION MATERIAL FROM CONCEALED SPACES, PRIOR TO CLOSING OR SEALING-OFF CONCEALED SPACES.
  6. ALL DEMOLITION/REMOVAL DEBRIS IS THE PROPERTY OF THE CONTRACTOR UNLESS NOTED OTHERWISE.
  7. SALVAGE - SALVAGE CERTAIN COMPONENTS FOR LIMITED REUSE TO MATCH EXISTING CONDITIONS FOR PATCH AND REPAIR AS INDICATED.
  8. PLUMBING AND HEATING SHAFT DEMOLITION NOT SHOWN ON DEMOLITION PLANS COORDINATE ADDITIONAL DEMOLITION TO ACCOMMODATE MECHANICAL AND ELECTRICAL.
  9. OPEN WALL TO ADD BLOCKING / SUPPORT FOR DOOR JAMB SUPPORT. TO CONNECT NEW WALL TO STUD WALL OF EXISTING WALL. TO ADD BLOCKING FOR CASEWORK AT EXISTING WALL.
  10. SEE FINISH SCHEDULE FOR AREAS SCHEDULED TO RECEIVE NEW FLOORING. REMOVE EXISTING FLOORING TO SUBFLOOR. PREP FOR NEW FLOOR.

- GENERAL PATCHING AND REPAIR NOTES**
1. DAMAGES, EXISTING BUILDING OR SITE COMPONENTS NOT SCHEDULED FOR WORK, WHICH ARE DAMAGED SHALL BE REPLACED OR RESTORED TO ORIGINAL CONDITION BY METHODS APPROVED BY THE ARCHITECT.
  2. PATCHING - AFTER REMOVAL OF BUILDING COMPONENTS AS INDICATED, PATCH AND PREPARE THE REMAINING EXISTING EXPOSED SURFACES TO RECEIVE NEW WORK AND FINISH. FOR EXAMPLES: LEVEL, REPAIR AND FINISH JOINTS WITHIN NEW GULF AT OPENINGS, PIECE-IN NEW PLASTER BACKING AND FINISH FLUSH, PIECE IN NEW CEILING SUSPENSION SYSTEM.
  3. WHERE NEW CONSTRUCTION EITHER INFILLS OR ADJUTS EXISTING CONSTRUCTION, THE FINISHED FACES SHALL ALIGN AND THE SURFACES SHALL BE FINISHED TO MATCH.
  4. PATCH AND LEVEL EXISTING FLOORS TO RECEIVE NEW FINISHES AS INDICATED IN THE ROOM FINISH SCHEDULE.
  5. AFTER REMOVAL OF BUILDING COMPONENTS, ANY RESULTING HOLES SHALL BE PATCHED. MAINTAIN EXISTING FIRE- OR SMOKE-RATINGS AS INDICATED. SLUG PATCHES SHALL BE FLUSH WITH ADJACENT SURFACES AND FINISHED TO MATCH.

- WALLS:**
- W1 REMOVE WALL AS REQUIRED FOR NEW OPENINGS
  - W2 REMOVE WALL AS REQUIRED
- CEILING:**
- C1 REMOVE CEILING TILE AND GRID IN THEIR ENTIRETY
  - C2 REMOVE CEILING TILES. REPAIR, REPLACE CEILING SUSPENSION TRACK AS REQUIRED FOR NEW CEILING
  - C3 SALVAGE LIGHT FIXTURE, CLEAN AND REPAIR FOR REUSE AS SHOWN ON CEILING PLAN. SELECT BEST FIXTURES FOR REUSE - REMOVE UNUSED
  - C4 REMOVE UNUSED CEILING MOUNTED ITEMS
- CASEWORK / PLUMBING:**
- M1 REMOVE DOCTORS DECK, SALVAGE AND REUSE BASE CABINET AND WALL CABINET WHERE SHOWN ON PLAN
  - M2 REMOVE EXISTING PLUMBING
  - M3 REMOVE EXISTING CASEWORK
- DOORS:**
- D1 SALVAGE DOOR FOR REUSE AS INDICATED ON PLAN, REMOVE UNUSED DOOR FRAMES, HANDWARE AND THRESHOLD IF ANY.



**2 CEILING DEMO PLAN**  
1/8"=1'-0"



**1 FLOOR DEMO PLAN**  
1/8"=1'-0"

Apr. 08, 2009 - b9ppm \\Pdt-fn\Draw2\Master Proj Files2\Maine Eye Center\Maine Eye Stroudwater\CAD\MECS\plandwg