

STROUDWATER CROSSING MAINE EYE CENTER

UPPER LEVEL FIT-UP
1685 CONGRESS STREET
PORTLAND, MAINE

CLIENT:
MAINE EYE CENTER
PORTLAND, MAINE

ARCHITECT:



PDT Architects
Portland, ME

ARCHITECTURE
INTERIOR DESIGN
PLANNING

ARCHITECTS

ABBREVIATIONS

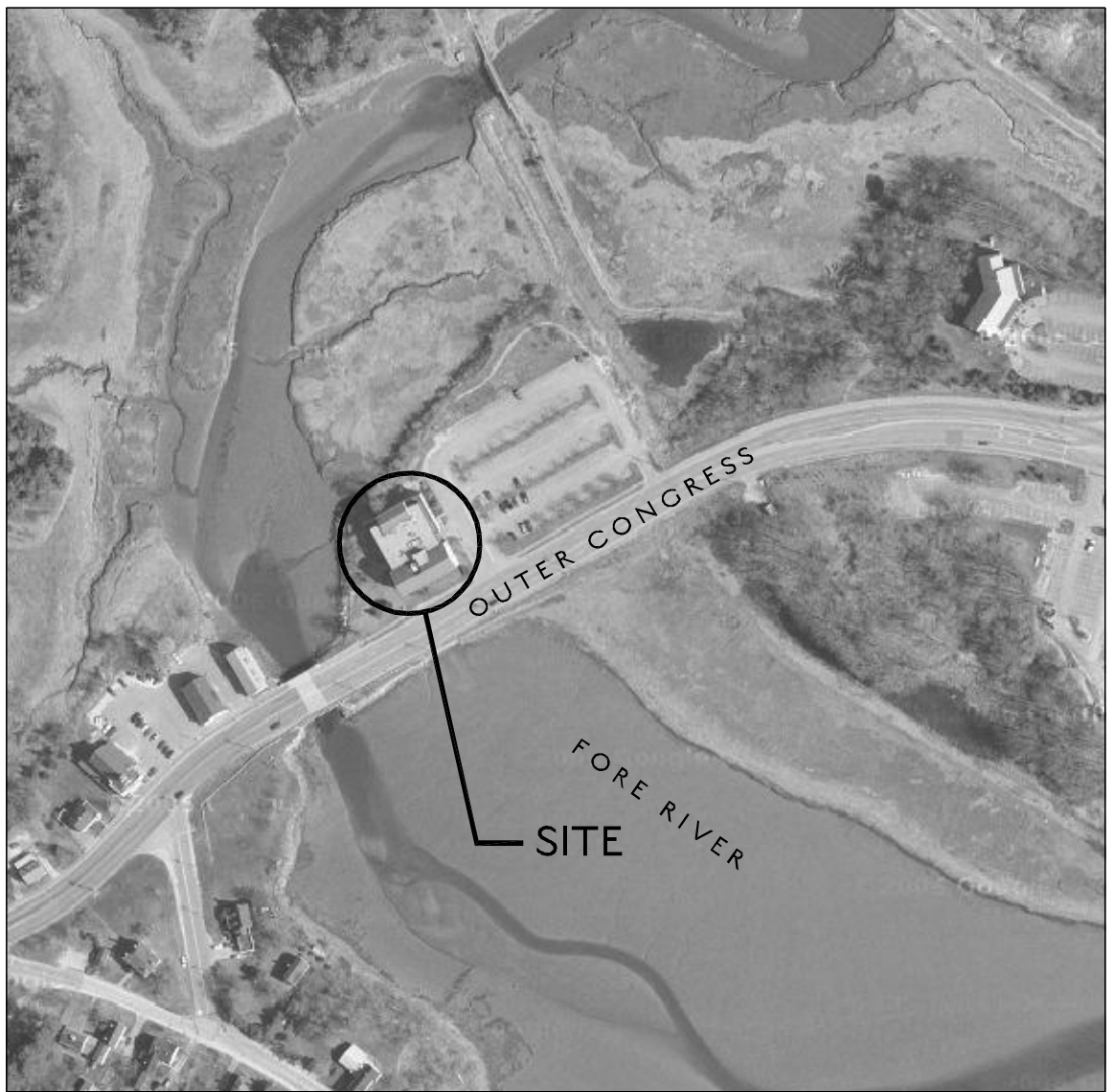
ACT	SUSPENDED ACOUSTICAL CEILING TILE	MECH	MECHANICAL
AFF	ABOVE FINISH FLOOR	MED	MEDIUM
BLDG	BUILDING	MFR	MANUFACTURER
BO	BOTTOM OF	MAX	MAXIMUM
CFMF	COLD FORMED METAL FRAMING	MTL	METAL
CJ	CONTROL JOINT	MIN	MINIMUM
CLG	CEILING	MISC	MISCELLANEOUS
CL	CENTER LINE	MR	MOISTURE RESISTANT
CL	CLOSET	NIC	NOT IN CONTRACT
COL	COLUMN	OC	ON CENTER
CONC	CONCRETE	PT	PRESSURE TREATED
CONST	CONSTRUCTION	R, RAD	RADIUS
CONT	CONTINUOUS	REF	REFRIGERATOR
DIA	DIAMETER	REQD	REQUIRED
DIM	DIMENSION	REV	REVISION
DW	DISHWASHER	RO	ROUGH OPENING
DWG	DRAWING	SAT	SUSPENDED ACOUSTICAL CEILING TILE
EJ	EXPANSION JOINT	SIM	SIMILAR
ELEV	ELEVATION	SFRM	SPRAY-APPLIED FIRE RESISTANT MATERIAL
EXIST	EXISTING	SPEC	SPECIFICATION
EXT	EXTERIOR	SQ	SQUARE
FD	FLOOR DRAIN	STL	STEEL
FBO	FURNISHED BY OWNER	STD	STANDARD
FDN	FOUNDATION	STRUCT	STRUCTURAL
FT	FEET	TO	TOP OF
GA	GAUGE	TYP	TYPICAL
GC	GENERAL CONTRACTOR	UNO	UNLESS NOTED OTHERWISE
GL	GLASS	VERT	VERTICAL
QWB	GYPSUM WALL BOARD	VIF	VERIFY IN FIELD
HM	HOLLOW METAL	W/	WITH
H, HGT	HEIGHT	W/O	WITHOUT
HOR	HORIZONTAL	WD	WOOD
INSUL	INSULATION		

DRAWING LIST

ARCHITECTURAL	
COVER	
LS	LIFE SAFETY PLAN
DI	DEMOLITION PLANS
A1	FLOOR PLAN
A2	CEILING PLAN
A3	INTERIOR ELEVATION AND CASEWORK DETAILS

Project No. 09-006
07 April 2009
Permit Set

LOCATION MAP



DRAWING SYMBOLS

	EXISTING CONSTRUCTION TO REMAIN		EXISTING ITEMS TO BE REMOVED
	PARTITION TYPE PARTITION NOTE		EXISTING DOOR TO BE SALVAGED OR REMOVED
	SECTION NUMBER SECTION MARKER SHEET NUMBER		DOOR NUMBER SALVAGED DOOR
	DETAIL NUMBER SHEET NUMBER		ROOM NAME
	ELEVATION NUMBER ELEVATION MARKER SHEET NUMBER		ROOM NUMBER
	PLUMBING FIXTURE		WINDOW TYPE
	BARRIER FREE FIXTURE		VERTICAL ELEVATION

PROJECT GENERAL NOTES

- THESE NOTES ARE INTENDED FOR GENERAL REFERENCE AND INFORMATION AND TO AUGMENT THE CONTRACT.
- ALL WORK INCLUDED IN THIS CONTRACT SHALL CONFORM TO ALL NATIONAL, STATE, AND LOCAL CODES, ORDINANCES AND AGENCY REQUIREMENTS INCLUDING, BUT NOT LIMITED TO: HAZARDOUS MATERIAL REMOVAL, SOLID WASTE DISPOSAL, SEISMIC DESIGN, AND LIFE-SAFETY.
- COORDINATE THE WORK OF ALL SUBCONTRACTORS.
- PROVIDE WORK HOLES AND ACCESS HOLES TO INSTALL NEW SYSTEMS IN CONCEALED SPACES, AS REQUIRED OR INDICATED. REPAIR THE OPENINGS AS INDICATED IN NOTES.
- IT IS THE INTENT OF THE DRAWINGS AND SPECIFICATIONS TO HAVE THE CONTRACTOR PROVIDE A COMPLETE, FULLY OPERATIONAL BUILDING. PROVIDE ALL LABOR, MATERIALS AND INCIDENTALS NECESSARY TO ACHIEVE THIS INTENT. FAILURE OF THE DRAWINGS OR SPECIFICATIONS TO INDICATE EACH INCIDENTAL SHALL NOT RELIEVE THE CONTRACTOR FROM PROVIDING THE NECESSARY ITEMS AS PART OF THIS CONTRACT. THE DRAWINGS SHOW THE DESIGN AND LAYOUT, DESCRIBE THE QUALITY LEVEL AND CONSTRUCTION TECHNIQUES IN A GENERAL SENSE ONLY. ALL DETAILS ARE TYPICAL. WHAT IS SHOWN IN ONE CONDITION APPLIES TO ALL OTHER SIMILAR CONDITIONS, UNLESS NOTED OTHERWISE.
- DO NOT PENETRATE STRUCTURAL BEAMS, COLUMNS, OR SHEAR WALLS.

- DEFINITIONS:
 - NEW: MAY BE USED TO INDICATE ITEMS WHICH SHALL BE FURNISHED AND INSTALLED BY THIS CONTRACT. TYPICALLY USED TO ENSURE CLARITY BETWEEN VARIOUS COMPONENTS OF THE DRAWINGS. NOT ALL ITEMS ARE LABELED AS "NEW" WHEN IT IS OBVIOUS BY OTHER INDICATION.
 - EXISTING: EXISTING BUILDING OR SITE COMPONENTS WHICH ARE IN PLACE AT THE START OF CONSTRUCTION. NOT ALL ITEMS ARE LABELED AS "EXISTING" WHEN IT IS OBVIOUS BY OTHER INDICATION. CONSULT THE ARCHITECT FOR CLARIFICATION.
 - REPAIR: RESTORE TO PROPER OPERATING AND AESTHETIC CONDITION.
 - RESTORE: BRING BACK TO FORMER CONDITION, BY REPAIRING OR PATCHING AS REQUIRED.
 - PATCH: RESTORE TO CONDITION MATCHING EXISTING ADJACENT CONSTRUCTION, SURFACE TEXTURE AND FINISH.
 - N.I.C. (NOT IN CONTRACT): WORK WHICH IS NOT INCLUDED IN THIS CONTRACT, BUT WHICH MAY REQUIRE CONTRACTOR COORDINATION.
 - REMOVE: DISMANTLE AND/OR EXTRACT FROM THE PREMISES ENTIRELY. DISPOSE OF OFF SITE UNLESS NOTED OTHERWISE.
 - REPLACE: DISMANTLE AND/OR EXTRACT FROM THE PREMISES ENTIRELY. DISPOSE OF OFF SITE UNLESS NOTED OTHERWISE. PROVIDE NEW MATERIAL AS INDICATED.
 - DEMOLISH: DISMANTLE AND/OR EXTRACT FROM THE PREMISES ENTIRELY. DISPOSE OF OFF SITE UNLESS NOTED OTHERWISE.
 - SALVAGE: REMOVE AND REINSTALL OR REMOVE AND DELIVER TO THE OWNER, AS INDICATED.
- VERIFY THE FOLLOWING ITEMS AND REPORT ANY DISCREPANCIES TO THE ARCHITECT PRIOR TO PROCEEDING WITH WORK, AND PROCEED WITH THE WORK ONLY AFTER SUCH DISCREPANCIES ARE RESOLVED BY THE ARCHITECT:
 - EXISTING CONDITIONS
 - THE SIZE AND LOCATION OF ALL EXISTING UTILITIES.
 - DISCREPANCIES BETWEEN OR WITHIN THE CONTRACT DOCUMENTS.
 - MECHANICAL, ELECTRICAL AND PLUMBING COORDINATION HAVING POTENTIAL IMPACT ON CEILING HEIGHTS OR BUILDING APPEARANCE
 - DIMENSIONAL DISCREPANCIES
- PROVIDE BOND-OUTS, BLOCKING, SLEEVES AND PIPES AS REQUIRED FOR ALL WALL, FLOOR, ROOF, AND CEILING PENETRATIONS THROUGH STRUCTURE. THE CONTRACTOR SHALL BE RESPONSIBLE FOR COORDINATION OF STRUCTURAL, MECHANICAL, PLUMBING AND ELECTRICAL COMPONENTS. THE CONTRACTOR SHALL BE RESPONSIBLE FOR SEALING ALL PENETRATIONS IN FIRE RATED ASSEMBLIES AND SMOKE ASSEMBLIES TO CONFORM TO U.L. RATED ASSEMBLIES AND ALL NFPA AND INTERNATIONAL BUILDING CODE REQUIREMENTS. ALL PENETRATIONS SHALL ALSO COMPLY WITH THE ACOUSTICAL ASSEMBLY RATING REQUIRED FOR EACH WALL OR FLOOR ASSEMBLY.

UTILITIES

GENERAL CONTRACTOR TO COORDINATE ALL WORK ASSOCIATED WITH UTILITIES.

WATER	CITY OF PORTLAND
GAS	
ELECTRIC	CENTRAL MAINE POWER
TELECOM	VERIZON
	TIME WARNER