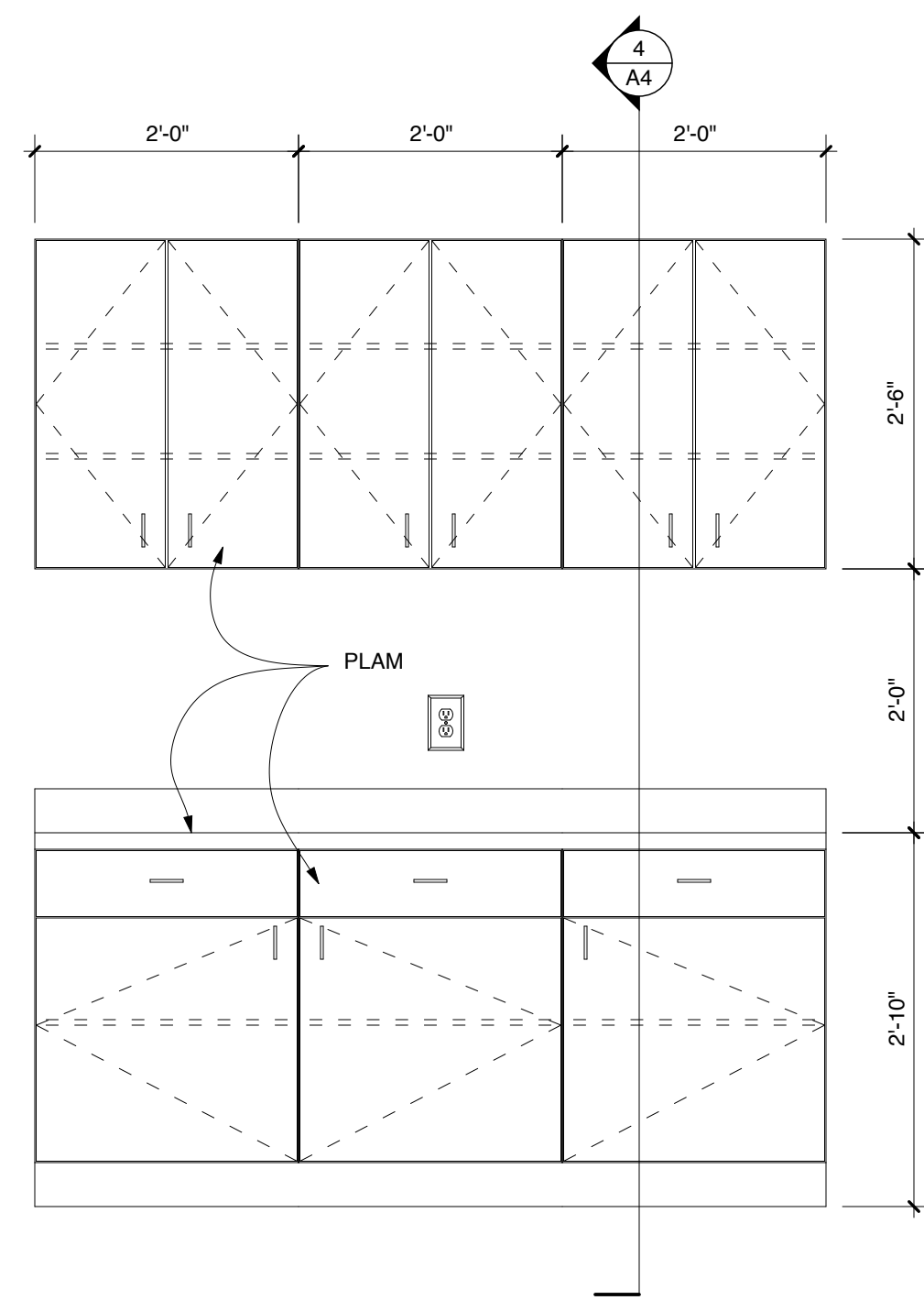
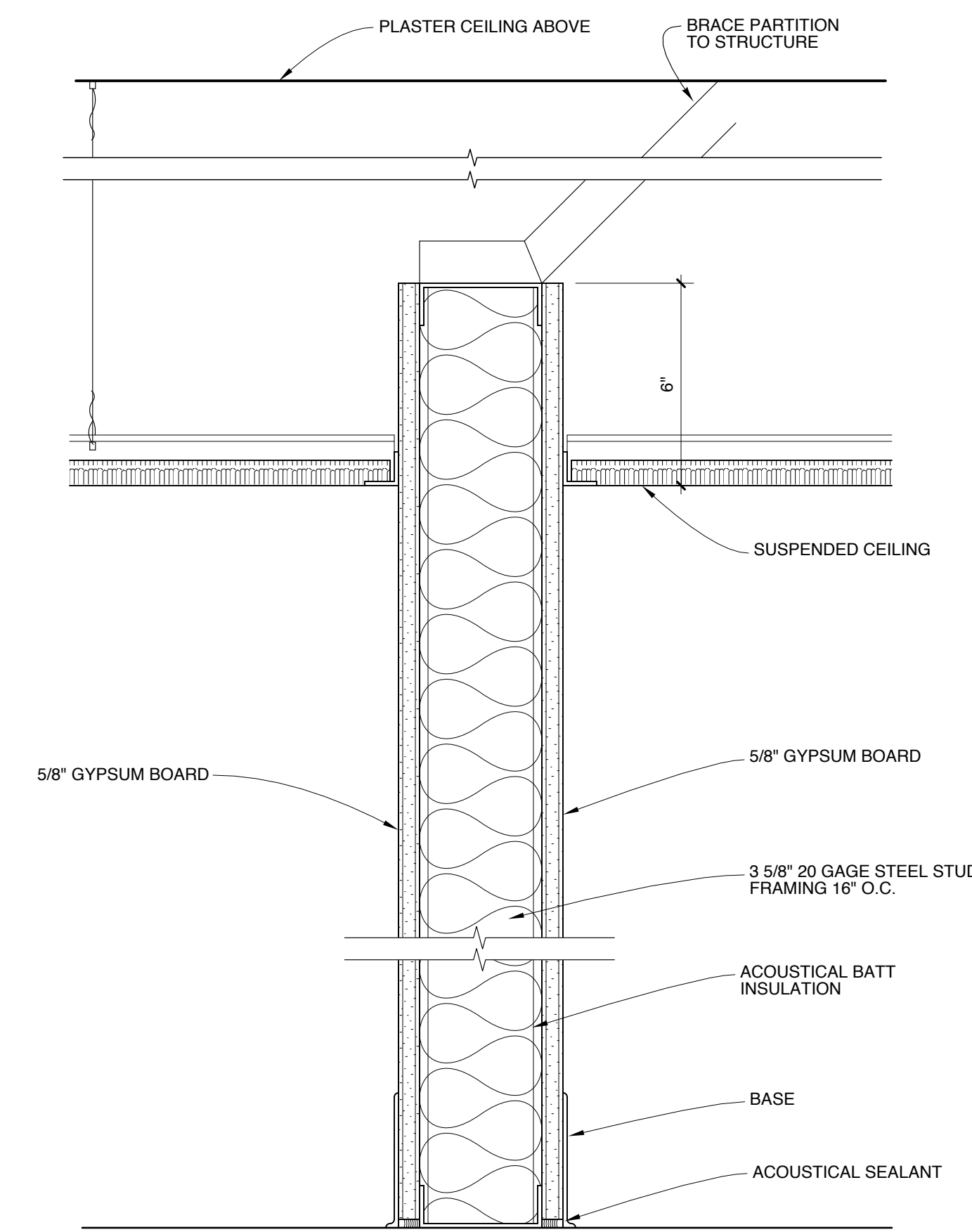


1 ELEVATION
SCALE: 3/4" = 1'-0"
4" 8" 1'-4" 2'-8"

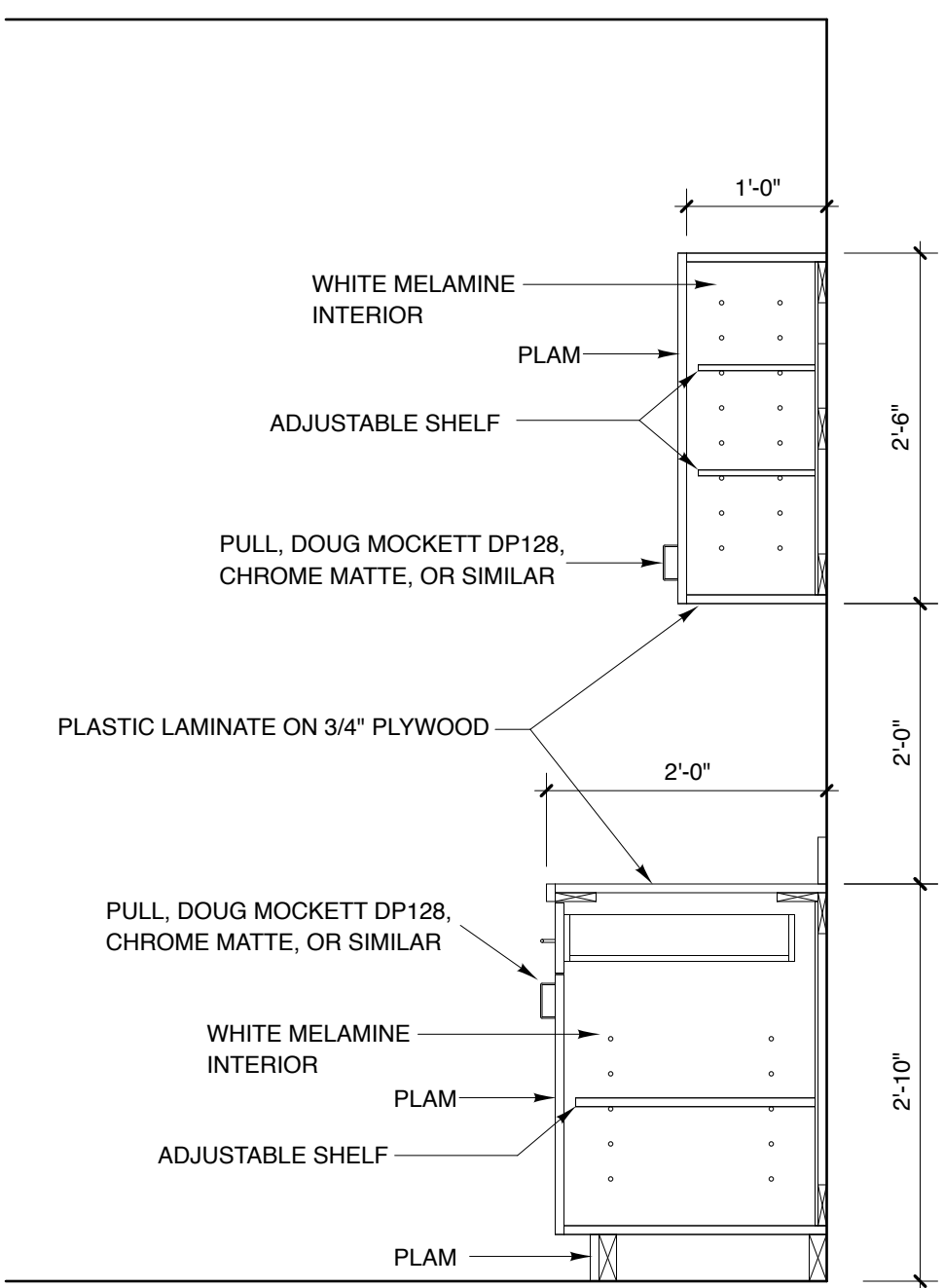


2 ELEVATION
SCALE: 3/4" = 1'-0"
4" 8" 1'-4" 2'-8"

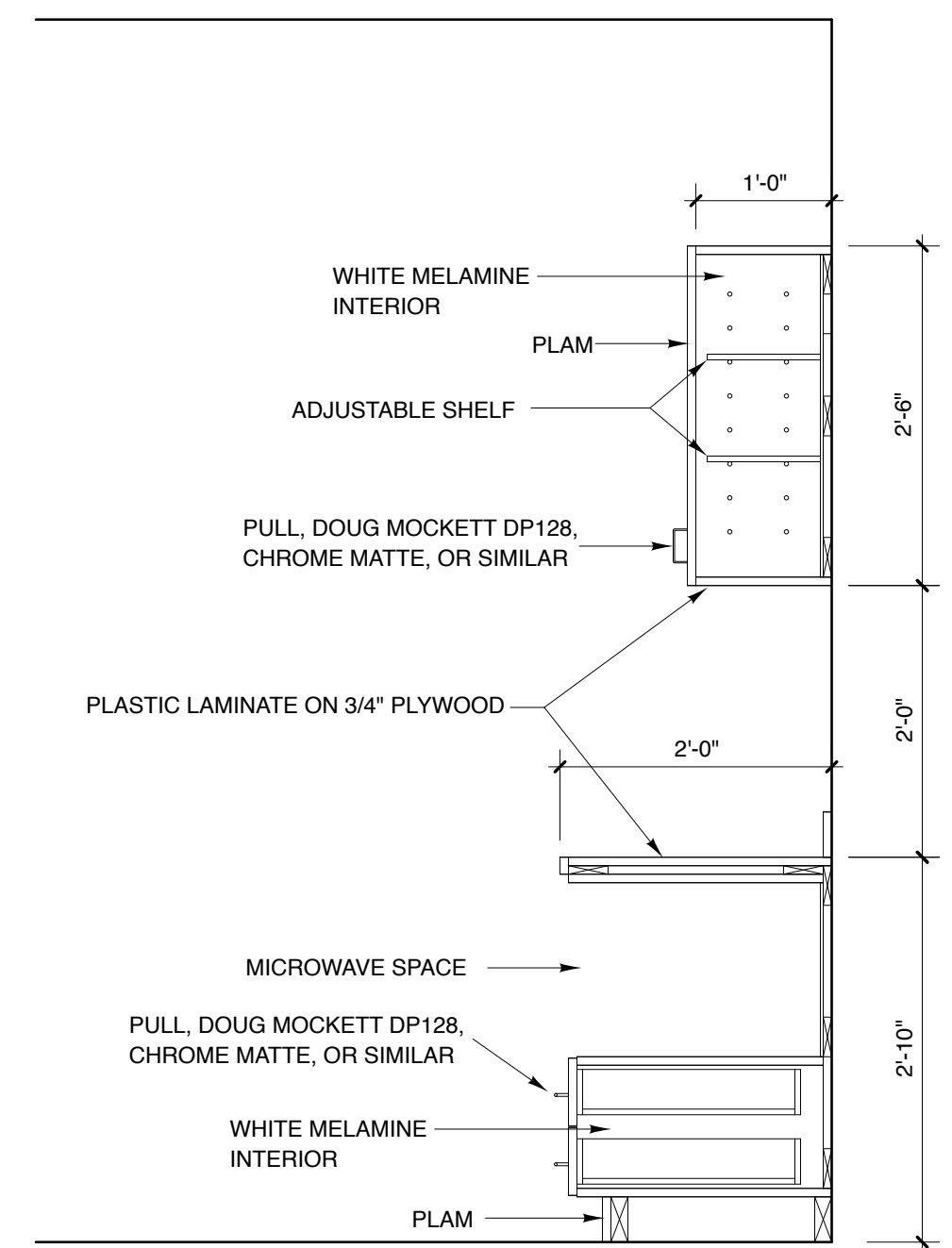
- MILLWORK NOTES:
1. ALL MILLWORK TO BE WILSON ART, DESIGNER WHITE (D354) PLAM, UNO
 2. CABINET HARDWARE TO BE DOUG MOCKETT DP 128, CHROME MATTE, OR SIMILAR, UNO.
 3. CABINET ELEVATIONS MAY NOT BE SCALED
 4. WHERE FILLER STRIPS ARE REQUIRED BETWEEN CABINETS, CASEWORK, ETC. AND ADJACENT WALLS, PROVIDE MATCHING, EQUAL SIZE STRIPS AT EACH END
 5. CONTRACTOR RESPONSIBLE TO FIELD VERIFY ALL DIMENSIONS, ROUGH OPENINGS AND JOB CONDITIONS PRIOR TO FABRICATION. COORDINATE WITH TENANT FOR QUESTIONS.
 6. WHERE GARBAGE DISPOSAL IS INDICATED, PROVIDE WALL MOUNTED SWITCH AS NEAR AS POSSIBLE TO 8" FROM CENTERLINE OF SINK WITH BOTTOM OF SWITCH PLATE MIN 2" ABOVE BACKSPLASH



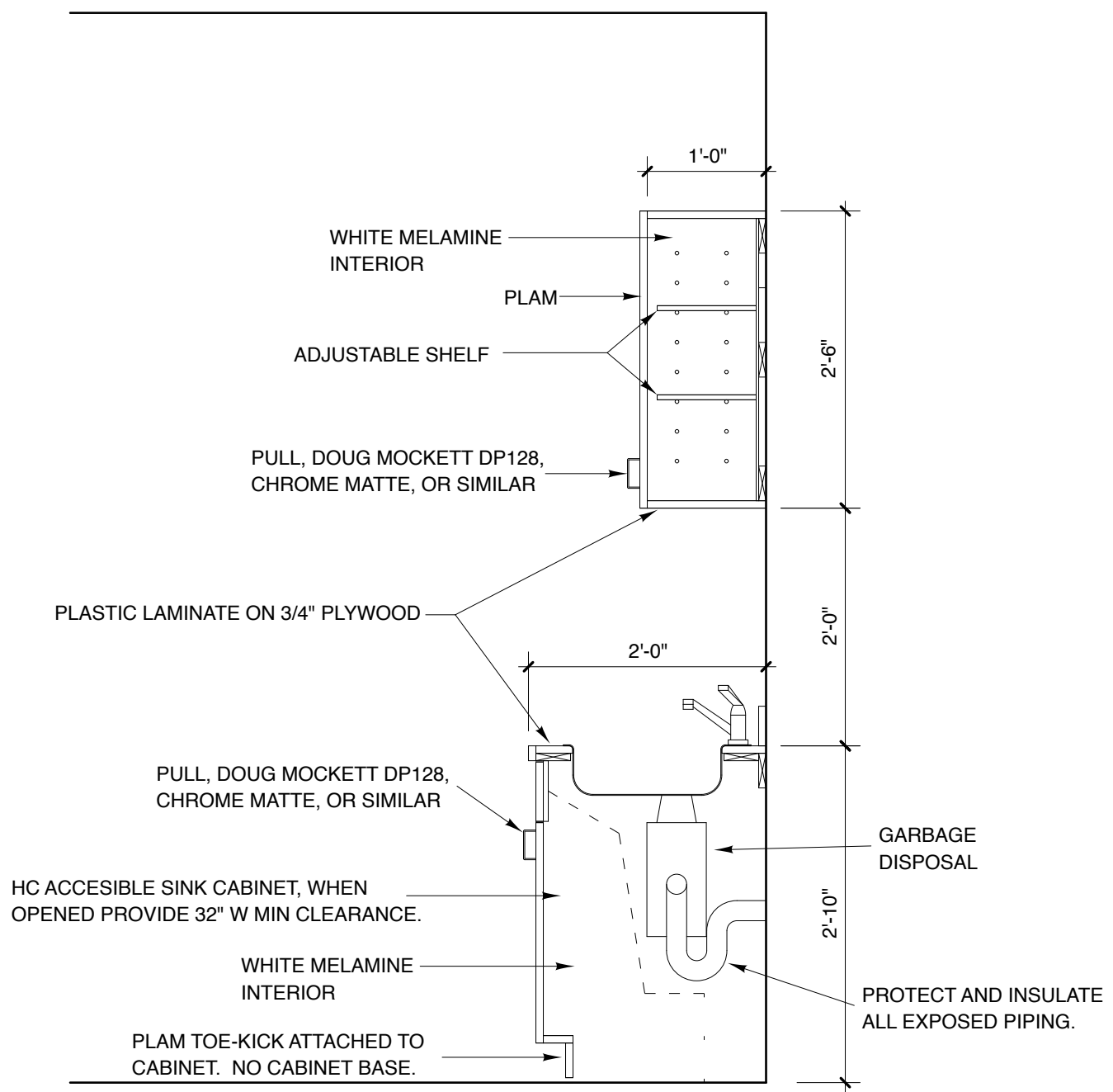
3 PARTITION TYPE P1
SCALE: 3" = 1'-0"
1" 2" 4" 8"



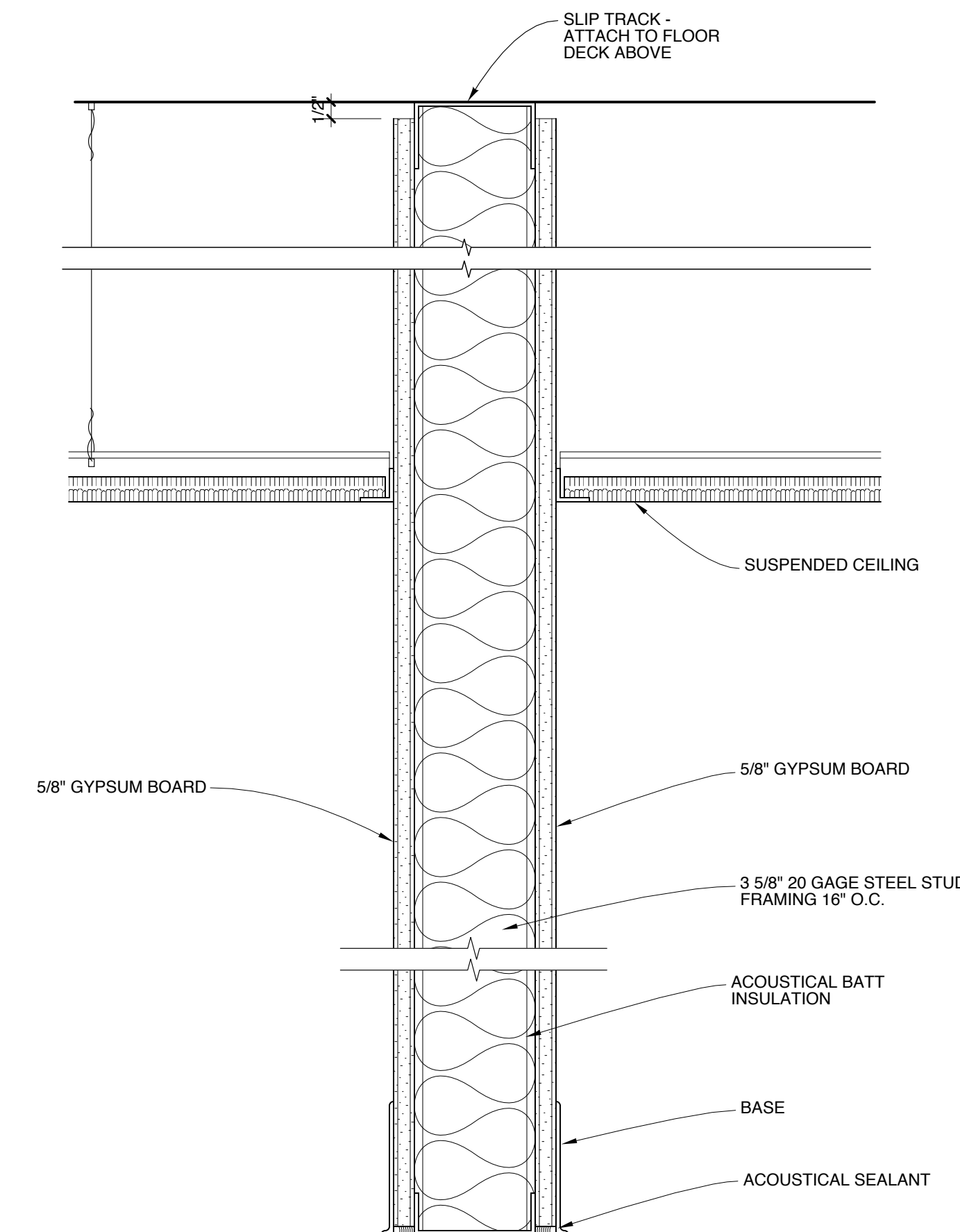
4 SECTION
SCALE: 3/4" = 1'-0"
4" 8" 1'-4" 2'-8"



5 SECTION
SCALE: 3/4" = 1'-0"
4" 8" 1'-4" 2'-8"



6 SECTION
SCALE: 3/4" = 1'-0"
4" 8" 1'-4" 2'-8"



7 PARTITION TYPE P2
SCALE: 3" = 1'-0"
1" 2" 4" 8"

Michael Charek Architects
25 Hartley Street
Portland, Maine 04103
(207) 761-0556



Offices for Maxim Healthcare Services
Second Floor
1685 Congress Street, 2nd Floor
Portland, ME 04102

Title
DETAILS

Scale: AS NOTED

Date: 11/9/17

Revisions
ISSUED FOR PERMIT

Sheet

A4