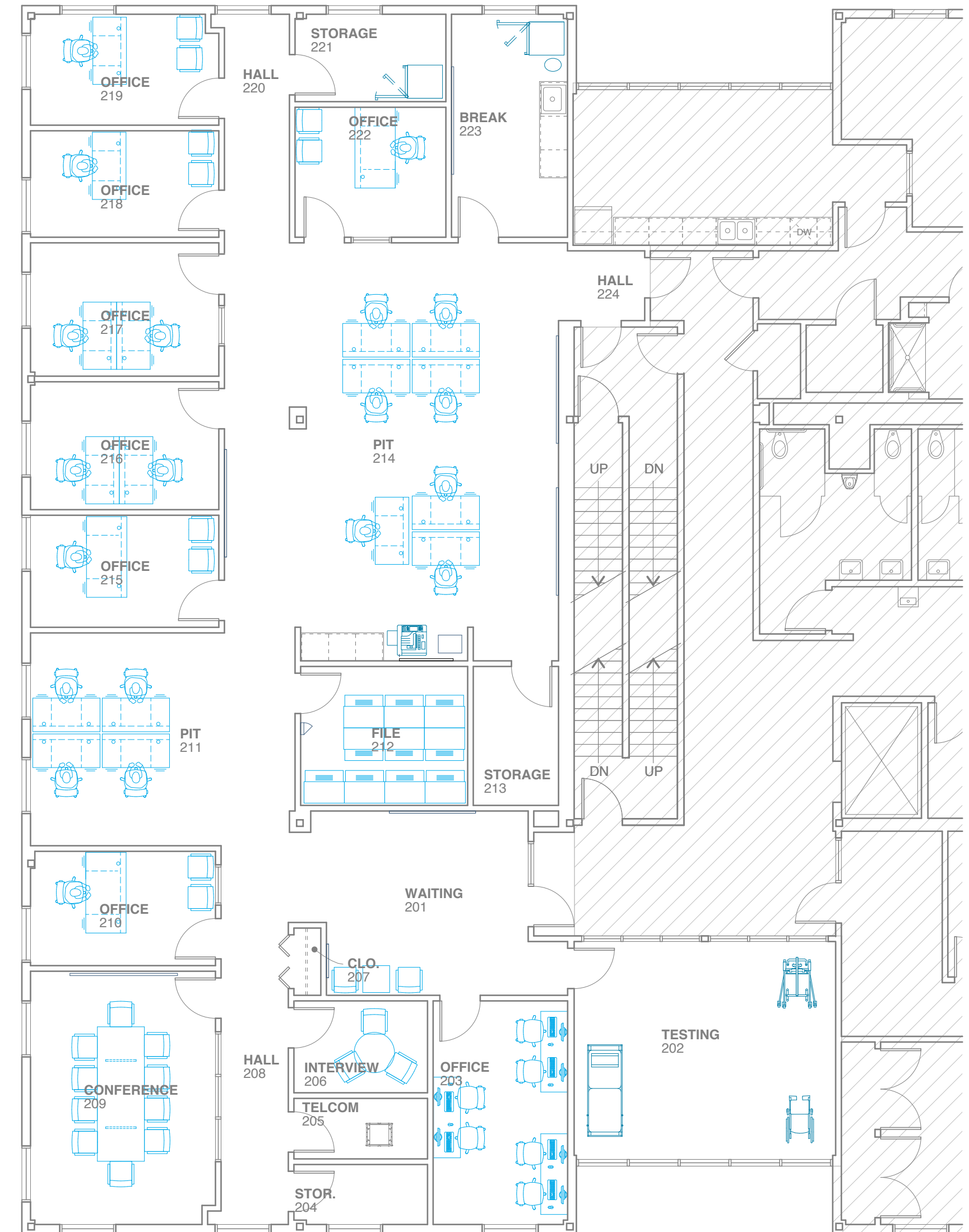


**1 REFLECTED CEILING PLAN**

SCALE: 1/8" = 1'-0"  
 2' 4' 8' 16'

AREA NOT IN CONTRACT

- REFLECTED CEILING PLAN NOTES**
1. PLAN SHOWS CEILING GRID AND LIGHTING LAYOUT ONLY.
  2. LOCATIONS OF HVAC FIXTURES AND SPRINKLER HEADS TO BE DETERMINED BY HVAC AND SPRINKLER CONTRACTORS.

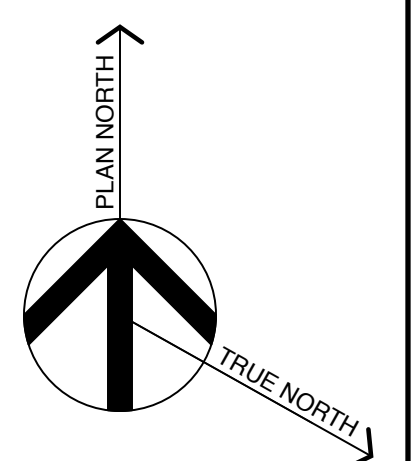


**2 FURNITURE PLAN**

SCALE: 1/8" = 1'-0"  
 2' 4' 8' 16'

AREA NOT IN CONTRACT

- FURNITURE PLAN NOTES**
1. FURNITURE AND EQUIPMENT SHOWN IN PLANS IS BY TENANT.
  2. FURNITURE AND EQUIPMENT LOCATIONS SHOWN ARE APPROXIMATE, AND ARE FOR ILLUSTRATION PURPOSES ONLY.



**Michael Charek Architects**  
 25 Hartley Street  
 Portland, Maine 04103  
 (207) 761-0656



**Offices for Maxim Healthcare Services**  
 Second Floor  
 1685 Congress Street, 2nd Floor  
 Portland, ME 04102

**Title**  
 REFLECTED CEILING PLAN AND FURNITURE PLAN

**Scale:** 1/8"=1'-0"

**Date:** 11/9/17

**Revisions**  
**ISSUED FOR PERMIT**

**Sheet**  
**A2**