

DOOR SCHEDULE												
NO.	DOOR TYPE	MAT.	FIN.	WIDTH	HEIGHT	THICK.	FRAME TYPE	MAT.	FIN.	HWDR.	FIRE RATING	NOTES
201	1	WD-SC	NAT	PR 3'-0"	7'-0"	1 3/4"	A	HM	PT	HW-1	--	
202	2	WD-SC	NAT	3'-0"	7'-0"	1 3/4"	EXG	EXG	PT	HW-2	--	3
203	3	WD-SC	NAT	PR 3'-0"	7'-0"	1 3/4"	A	HM	PT	HW-3	--	
204	3	WD-SC	NAT	PR 3'-0"	7'-0"	1 3/4"	A	HM	PT	HW-3	--	
206	2	WD-SC	NAT	3'-0"	7'-0"	1 3/4"	A	HM	PT	HW-2	--	3
207	2	WD-SC	NAT	3'-0"	7'-0"	1 3/4"	A	HM	PT	HW-2	--	3
208	2	WD-SC	NAT	3'-0"	7'-0"	1 3/4"	A	HM	PT	HW-2	--	3
209	2	WD-SC	NAT	3'-0"	7'-0"	1 3/4"	B	HM	PT	HW-2	--	
210	2	WD-SC	NAT	3'-0"	7'-0"	1 3/4"	B	HM	PT	HW-2	--	
211	2	WD-SC	NAT	3'-0"	7'-0"	1 3/4"	B	HM	PT	HW-2	--	
214	2	WD-SC	NAT	3'-0"	7'-0"	1 3/4"	A	HM	PT	HW-4	--	
215	2	WD-SC	NAT	3'-0"	7'-0"	1 3/4"	B	HM	PT	HW-2	--	
216	2	WD-SC	NAT	3'-0"	7'-0"	1 3/4"	EXG	EXG	PT	EXG	--	3, 4
217	2	WD-SC	NAT	3'-0"	7'-0"	1 3/4"	A	HM	PT	HW-2	--	
218	2	WD-SC	NAT	3'-0"	7'-0"	1 3/4"	A	HM	PT	HW-2	--	
219	2	WD-SC	NAT	3'-0"	7'-0"	1 3/4"	EXG	EXG	PT	EXG	--	3, 4
220	2	WD-SC	NAT	3'-0"	7'-0"	1 3/4"	A	HM	PT	HW-4	--	
222	4	WD-SC	NAT	3'-0"	7'-0"	1 3/4"	A	HM	PT	HW-5	--	
223	EXG	EXG	EXG	EXG	EXG	EXG	EXG	EXG	PT	EXG	--	2

MATERIAL/FINISH ABBREVIATIONS
 EXG EXISTING
 FIB FIBERGLASS
 NAT NATURAL FINISH
 PT PAINT
 SC SOLID CORE
 WD WOOD

HARDWARE
 HW-1 6 HINGES
 2 VERTICAL ROD EXIT DEVICES
 2 CLOSERS
 2 STOPS
 2 KICK PLATES
 HW-2 3 HINGES
 1 LOCKSET
 1 STOP
 3 SILENCERS
 HW-3 6 HINGES
 1 LOCKSET
 1 SET FLUSH BOLTS
 2 STOPS

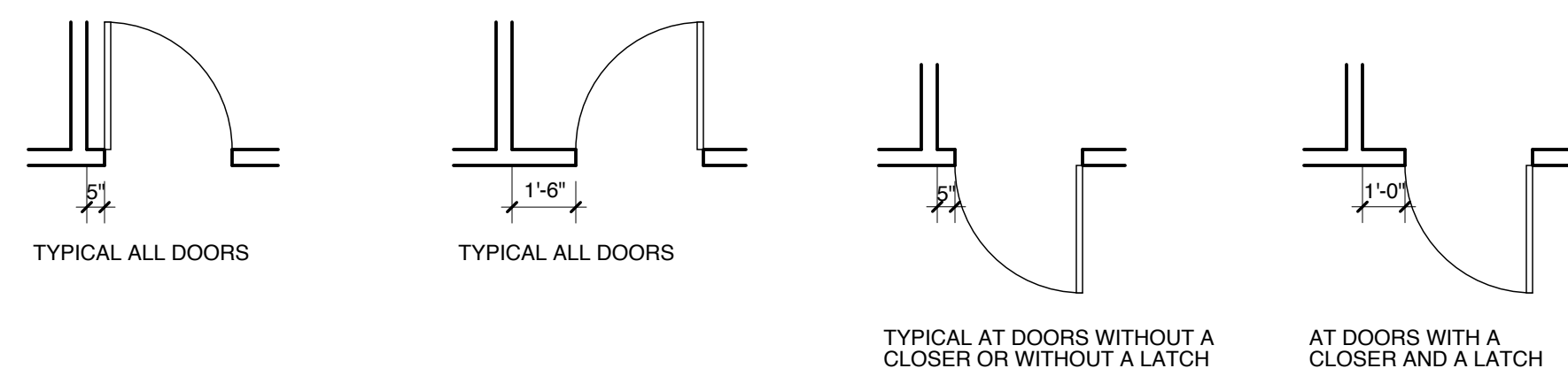
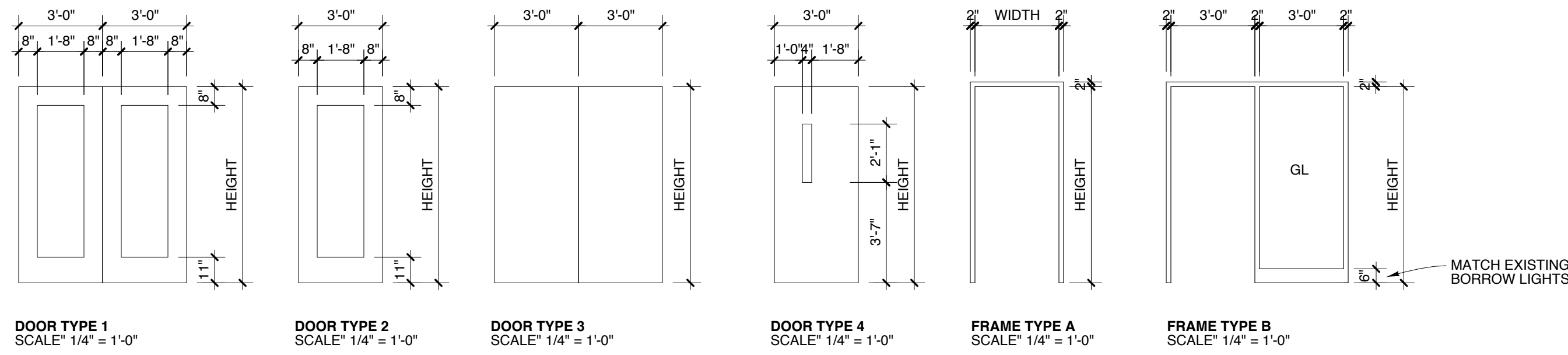
NOTES
 1. DOORS NOT SCHEDULED ARE EXISTING TO REMAIN.
 2. REINSTALL DOOR AND FRAME REMOVED FROM THIS ROOM.
 3. NEW DOOR IN EXISTING FRAME. RE-USE EXISTING HINGES.
 4. RE-USE EXISTING LOCKSET.

HW-4 3 HINGES
 1 PASSAGE SET
 1 STOP
 3 SILENCERS
 HW-5 3 HINGES
 1 LOCKSET
 1 STOP
 3 SILENCERS

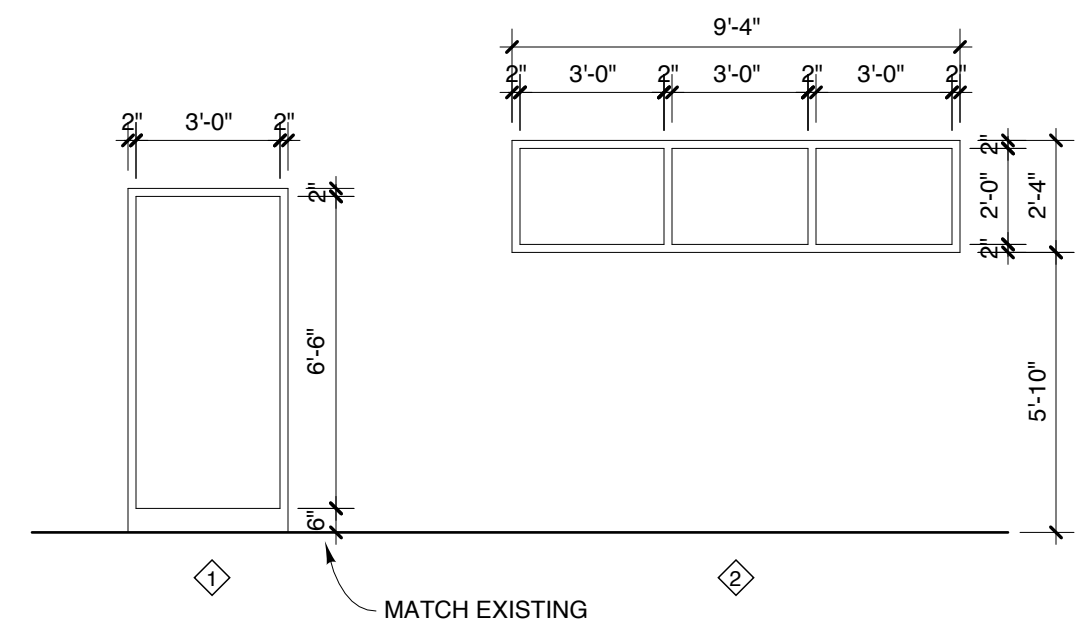
ROOM FINISH SCHEDULE									
NO.	NAME	FLOORS MAT.	BASE MAT.	WALLS MAT.	TRIM MAT.	CEILING HEIGHT	MAT.	NOTES	
201	ENTRY	PLK	VB	GYP / PT	PT	9'-0"±	EXG		
202	CORRIDOR	CPT	VB	GYP / PT	PT	9'-0"±	EXG		
203	CLOSET	CPT	VB	GYP / PT	PT	9'-0"±	ACT		
204	OFFICE	CPT	VB	PT	PT	9'-0"±	EXG		
205	TOILET	CT	CT	PT	PT	9'-0"±	EXG	2	
206	OFFICE	CPT	VB	PT	PT	9'-0"±	EXG		
207	OFFICE	CPT	VB	PT	PT	9'-0"±	EXG		
208	CONFERENCE	CPT	VB	PT	PT	9'-0"±	EXG	3	
209	OFFICE	CPT	VB	GYP / PT	PT	9'-0"±	ACT		
210	OFFICE	CPT	VB	GYP / PT	PT	9'-0"±	ACT		
211	OFFICE	CPT	VB	GYP / PT	PT	9'-0"±	ACT		
212	SERVER	VCT	VB	PT	PT	9'-0"±	EXG		
213	WORKROOM	VCT	VB	PT	PT	9'-0"±	EXG		
214	CORRIDOR	CPT	VB	PT	PT	9'-0"±	EXG		
215	OFFICE	CPT	VB	GYP / PT	PT	9'-0"±	ACT		
216	OFFICE	CPT	VB	GYP / PT	PT	9'-0"±	ACT		
217	OFFICE	CPT	VB	GYP / PT	PT	9'-0"±	ACT		
218	OFFICE	CPT	VB	GYP / PT	PT	9'-0"±	ACT		
219	OFFICE	CPT	VB	GYP / PT	PT	9'-0"±	ACT		
220	WORKROOM	CPT	VB	PT	PT	9'-0"±	EXG		
221	LUNCHROOM	PLK	VB	GYP / PT	PT	9'-0"±	EXG		
222	CORRIDOR	CPT	VB	PT	PT	9'-0"±	EXG		
223	STORAGE	CPT	VB	GYP / PT	PT	9'-0"±	ACT		
224	SHOWER	CT	CT	GYP / PT	PT	9'-0"±	ACT	2	
225	TOILET	CT	CT	PT	PT	9'-0"±	EXG	2	
226	OPEN OFFICE	CPT	VB	GYP / PT	PT	9'-0"±	EXG / ACT		
227	OPEN OFFICE	CPT	VB	PT	PT	9'-0"±	EXG		

MATERIAL/FINISH ABBREVIATIONS
 ACT ACOUSTICAL SUSPENDED CEILING
 CPT CARPET
 CT CERAMIC TILE
 EXG EXISTING
 GYP GYPSUM BOARD
 PLK VINYL PLANK
 PT PAINT
 VB VINYL BASE
 VCT VINYL COMPOSITION TILE

NOTES
 1. PAINT COLORS TO BE DETERMINED.
 2. ADA MARBLE THRESHOLD.
 3. WOOD CHAIR RAIL AROUND PERIMETER.



1 TYPICAL DOOR JAMB CLEARANCES
 SCALE: 1/4" = 1'-0"



2 BORROW LIGHTS
 SCALE: 1/4" = 1'-0"

