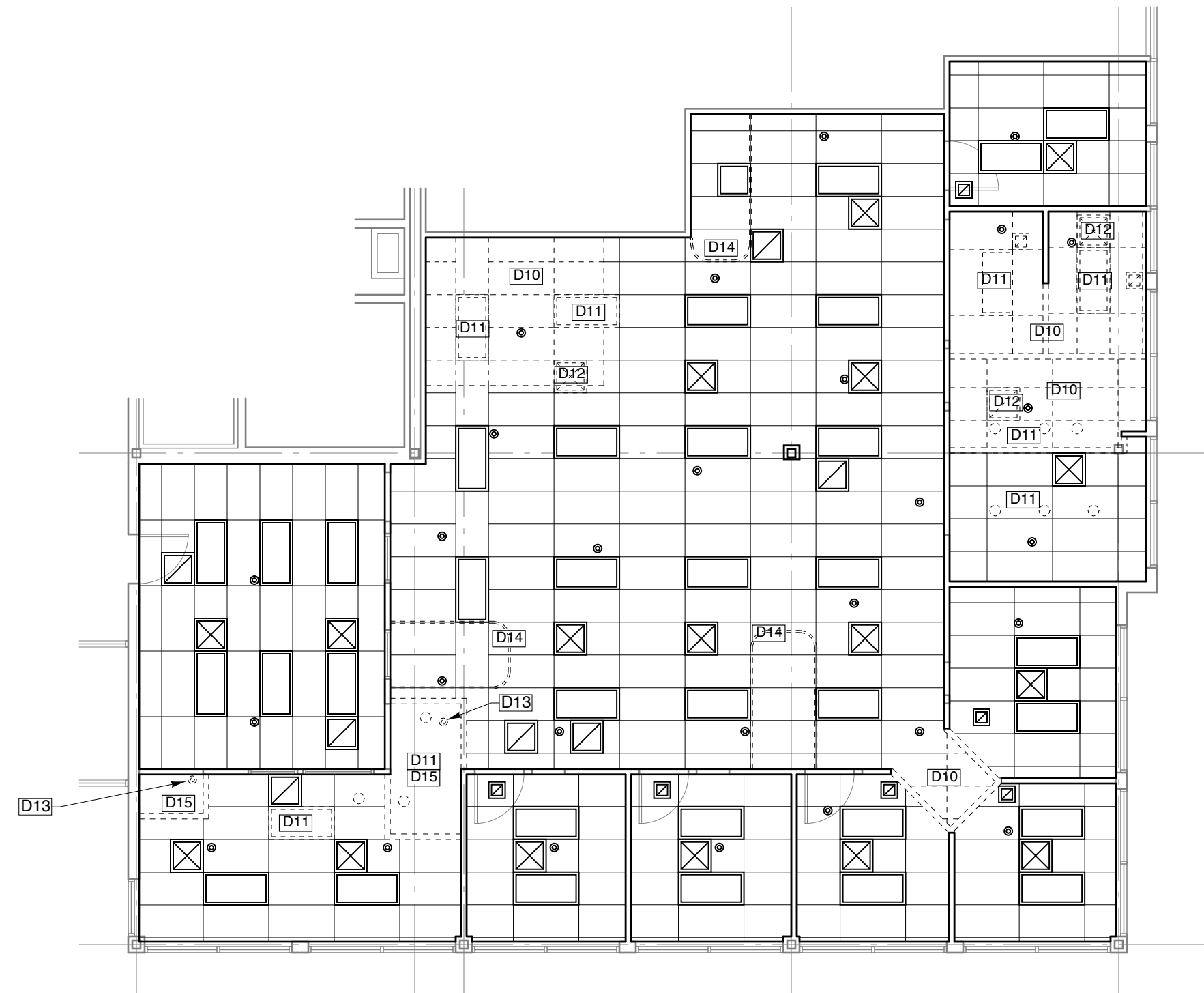


1 DEMOLITION PLAN
 SCALE: 1/8" = 1'-0"
 2' 4' 8' 16'

PARTITIONS/WALLS KEY
 ——— EXISTING TO REMAIN
 - - - - - EXISTING TO BE REMOVED



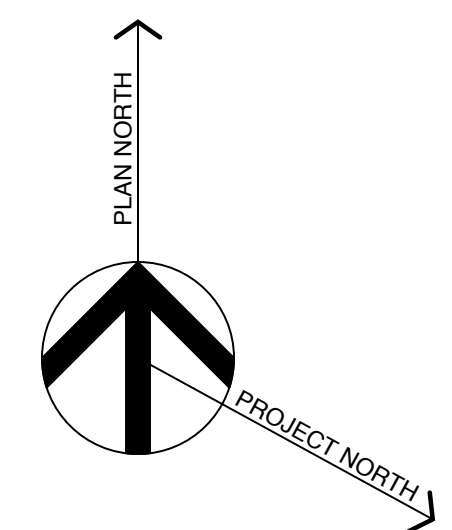
2 CEILING DEMOLITION PLAN
 SCALE: 1/8" = 1'-0"
 2' 4' 8' 16'

DEMOLITION GENERAL NOTES

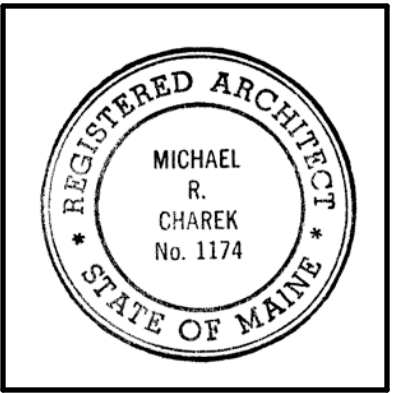
- A. ITEMS INDICATED TO BE REMOVED AND SALVAGED REMAIN OWNER'S PROPERTY. REMOVE, CLEAN, AND DELIVER TO OWNER'S DESIGNATED STORAGE AREA.
- B. COMPLY WITH EPA REGULATIONS AND HAULING AND DISPOSAL REGULATIONS OF AUTHORITIES HAVING JURISDICTION.
- C. OTHER TENANTS WILL OCCUPY PORTIONS OF BUILDING IMMEDIATELY ADJACENT TO SELECTIVE DEMOLITION AREA. CONDUCT SELECTIVE DEMOLITION SO TENANTS' OPERATIONS WILL NOT BE DISRUPTED.
- D. IT IS NOT EXPECTED THAT HAZARDOUS MATERIALS WILL BE ENCOUNTERED IN THE WORK. IF MATERIALS SUSPECTED OF CONTAINING HAZARDOUS MATERIALS ARE ENCOUNTERED, DO NOT DISTURB; IMMEDIATELY NOTIFY ARCHITECT AND OWNER. OWNER WILL REMOVE HAZARDOUS MATERIALS UNDER A SEPARATE CONTRACT.
- E. MAINTAIN SERVICES/SYSTEMS INDICATED TO REMAIN AND PROTECT THEM AGAINST DAMAGE DURING SELECTIVE DEMOLITION OPERATIONS. BEFORE PROCEEDING WITH DEMOLITION, PROVIDE TEMPORARY SERVICES/SYSTEMS THAT BYPASS AREA OF SELECTIVE DEMOLITION AND THAT MAINTAIN CONTINUITY OF SERVICES/ SYSTEMS TO OTHER PARTS OF THE BUILDING.
- F. LOCATE, IDENTIFY, SHUT OFF, DISCONNECT, AND CAP OFF UTILITY SERVICES AND MECHANICAL/ELECTRICAL SYSTEMS SERVING AREAS TO BE SELECTIVELY DEMOLISHED.
- G. PROVIDE TEMPORARY BARRICADES AND OTHER PROTECTION REQUIRED TO PREVENT INJURY TO PEOPLE AND DAMAGE TO ADJACENT BUILDINGS AND FACILITIES TO REMAIN.
- H. PROVIDE AND MAINTAIN SHORING, BRACING, AND STRUCTURAL SUPPORTS AS REQUIRED TO PRESERVE STABILITY AND PREVENT MOVEMENT, SETTLEMENT, OR COLLAPSE OF CONSTRUCTION AND FINISHES TO REMAIN OR CONSTRUCTION BEING DEMOLISHED.
- I. PROVIDE TEMPORARY WEATHER PROTECTION TO PREVENT WATER LEAKAGE AND DAMAGE TO STRUCTURE AND INTERIOR AREAS.
- J. PROTECT WALLS, CEILINGS, FLOORS, AND OTHER EXISTING FINISH WORK THAT ARE TO REMAIN. ERECT AND MAINTAIN DUSTPROOF PARTITIONS. COVER AND PROTECT FURNITURE, FURNISHINGS, AND EQUIPMENT THAT HAVE NOT BEEN REMOVED.
- K. NEATLY CUT OPENINGS AND HOLES PLUMB, SQUARE, AND TRUE TO DIMENSIONS REQUIRED. USE CUTTING METHODS LEAST LIKELY TO DAMAGE CONSTRUCTION TO REMAIN OR ADJOINING CONSTRUCTION.
- L. PROMPTLY REMOVE DEMOLISHED MATERIALS FROM OWNER'S PROPERTY AND LEGALLY DISPOSE OF THEM. DO NOT BURN DEMOLISHED MATERIALS.
- M. ITEMS TO BE REMOVED:
 1. SPECIFIC ITEMS AS INDICATED BY KEYNOTE AND LEGEND.
 2. FINISH FLOORING AND OAK PANELING AND BASE IN ALL AREAS.
- N. ITEMS TO BE SALVAGED FOR REUSE:
 1. DOORS AND FRAMES.
 2. REUSABLE CEILING ELEMENTS: LIGHTS, HVAC COMPONENTS.

DEMOLITION KEYNOTES -- THIS SHEET ONLY

- D001 REMOVE EXISTING PARTITION.
- D002 REMOVE EXISTING DOOR & FRAME.
- D003 REMOVE EXISTING TRANSOM LIGHT.
- D004 CUT NEW DOOR / SIDELIGHT OPENING.
- D005 REMOVE EXISTING CASEWORK.
- D006 REMOVE EXISTING PLUMBING FIXTURES AND PIPING. CAP OFF PIPING BELOW FLOOR OR BEHIND WALL.
- D007 CUT BACK EXISTING TRANSACTION STOOL TO MATCH STOOL ON OTHER SIDE OF WALL.
- D008 REMOVE SLIDING GLASS AND TRACK FROM WINDOW OPENING.
- D009 REMOVE PANELING FROM LOWER PORTION OF COLUMN.
- D010 REMOVE EXISTING CEILING GRID.
- D011 REMOVE EXISTING LIGHT FIXTURE.
- D012 REMOVE EXISTING HVAC DIFFUSER / GRILLE.
- D013 REMOVE EXISTING SPRINKLER HEAD.
- D014 REMOVE EXISTING CURTAIN TRACK.
- D015 REMOVE GYPSUM BOARD SOFFIT.



Michael Charek Architects
 25 Hartley Street
 Portland, Maine 04103
 (207) 761-0556



Offices for Regency Mortgage
 1685 Congress Street
 Portland, ME 04102

Title
 DEMOLITION PLANS

Scale: 1/8" = 1'-0"
Date: 4/7/14

Revisions
ISSUED FOR PERMIT

Sheet
D1