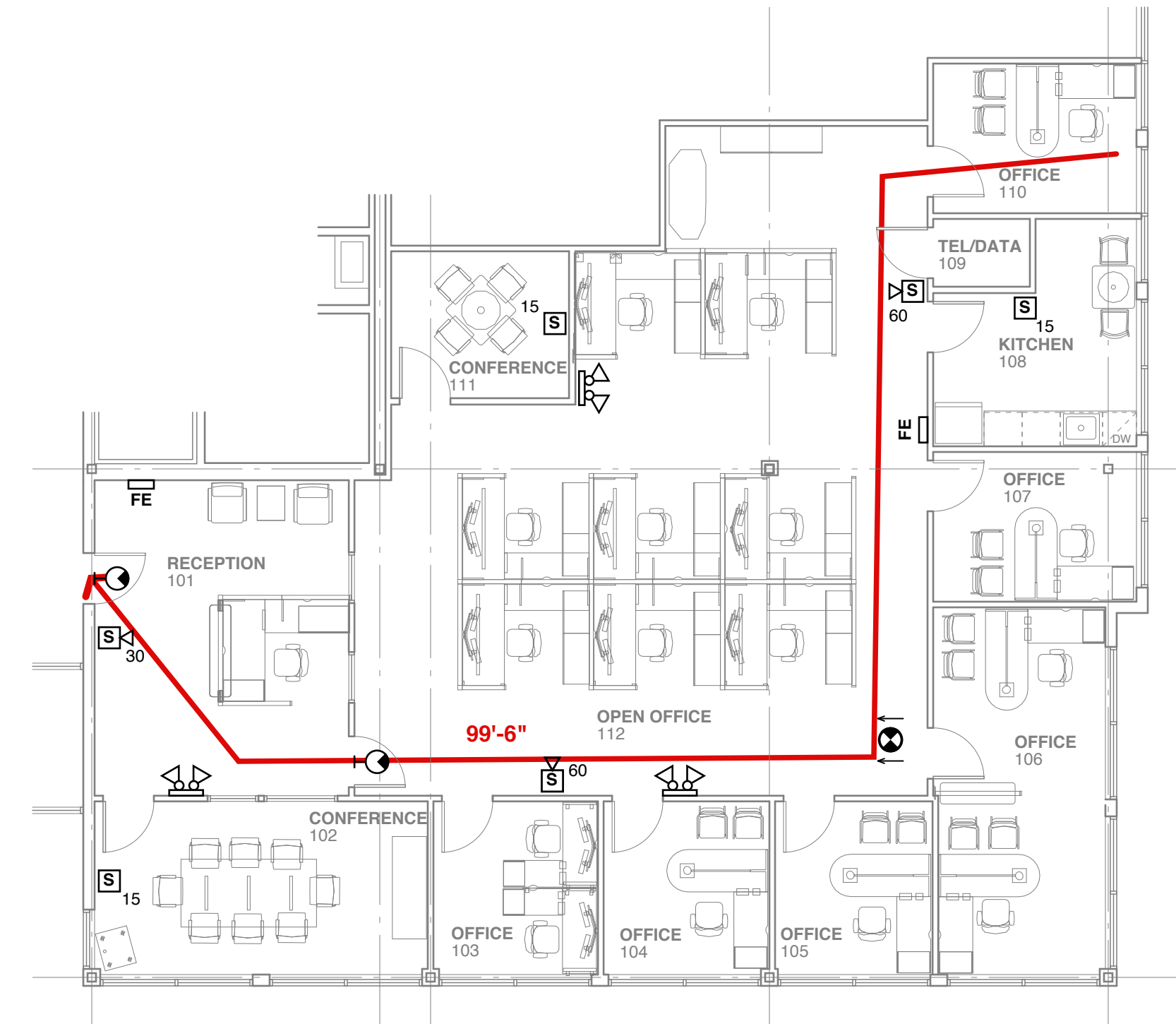


**1 FURNITURE PLAN**  
 SCALE: 1/8" = 1'-0"  
 2' 4' 8' 16'

**FURNITURE PLAN NOTES**

1. FURNITURE SHOWN IS FOR ILLUSTRATION AND COORDINATION PURPOSES ONLY.
2. FURNITURE TO BE PROVIDED BY TENANT.

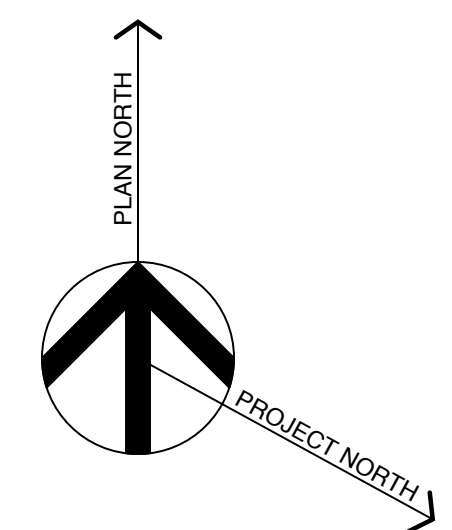


**2 LIFE SAFETY PLAN**  
 SCALE: 1/8" = 1'-0"  
 2' 4' 8' 16'

- LIFE SAFETY PLAN LEGEND**
- EMERGENCY LIGHT DOUBLE HEAD
  - EXIT SIGN WALL MOUNT - ARROWS INDICATE DIRECTION
  - EXIT SIGN CEILING MOUNT - ARROWS INDICATE DIRECTION
  - HORN STROBE - NUMBER INDICATES CANDELA RATING
  - STROBE - NUMBER INDICATES CANDELA RATING
  - FIRE EXTINGUISHER
  - COMMON PATH OF TRAVEL AND DISTANCE

**LIFE SAFETY PLAN GENERAL NOTES**

- A. PROVIDE NEW DEVICES ACCORDING TO LAYOUT SHOWN.
- B. PLAN SHOWS LOCATIONS OF LIFE SAFETY DEVICES. EXISTING WIRING MAY BE USED IF EXISTING DEVICES ARE CLOSE TO THOSE SHOWN.
- C. COORDINATE WITH BUILDING FIRE ALARM VENDOR TO ENSURE COMPATIBILITY OF NEW DEVICES WITH EXISTING SYSTEM.
- D. FURNITURE BY TENANT. SHOWN FOR ILLUSTRATION PURPOSES.



**Michael Charek Architects**

25 Hartley Street  
 Portland, Maine 04103  
 (207) 761-0556



**Offices for  
 Regency Mortgage**

1685 Congress Street  
 Portland, ME 04102

**Title**

FURNITURE PLAN  
 LIFE SAFETY PLAN

**Scale:** 1/8" = 1'-0"

**Date:** 4/7/14

**Revisions**

**ISSUED FOR  
 PERMIT**

**Sheet**

**A2**