

Occupancy Load IBC: 45 Occupants  
 Occupant Load NFPA 101: 150 Occupants

23 people  
 45 people

TYPICAL PROPOSED WALL ASSEMBLY:  
 5/8" GYPSUM WALL BOARD  
 3 1/2" METAL FRAMING W/  
 ACCOUSTICAL BATT INSULATION  
 5/8" GYPSUM WALL BOARD

ness)

150 people

ACCESSIBLE  
TOILET

ACCESSIBLE  
WASH SINK

2'-8" X 2'-8"  
SHOWER

EXISTING  
FIXTURES

EXISTING  
FIXTURES

36" X 7'-0"  
OPAQUE DOOR

2'-6" X 5'-0" ACCESSIBLE ROLL-IN SHOWER

2'-6" X 5'-0" TUB

30" X 7'-0"  
OPAQUE DOOR

11'-5 1/8"  
OFFICE

CHANGE

MECHANICAL

RECEPTION

WAITING

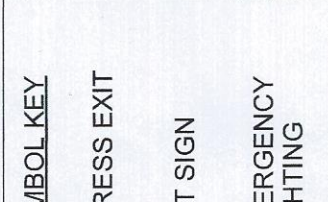
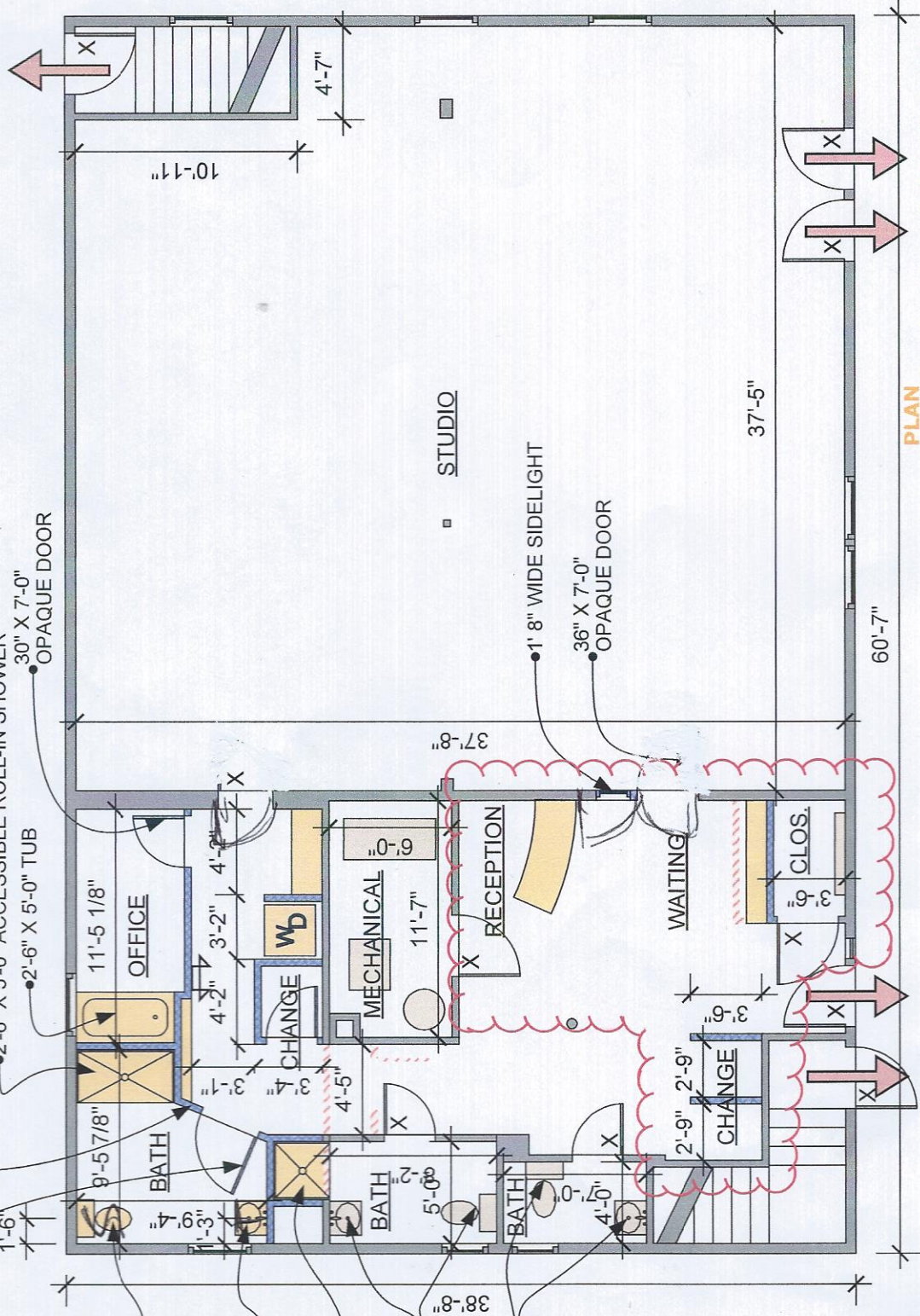
CHANGE

CLOS.

STUDIO

1'-8" WIDE SIDELIGHT

36" X 7'-0"  
OPAQUE DOOR



PLAN  
 scale: 1/8"=1'

A  
 1.0

11/5/2014

ISSUE  
 10.15.14  
 SCALE  
 1/8"=1'-0"

DRAWN BY  
 EAC  
 DESCRIPTION  
 Permit Plan

PROJECT NO.  
 14029  
 PROJECT  
 Yoga Studio

