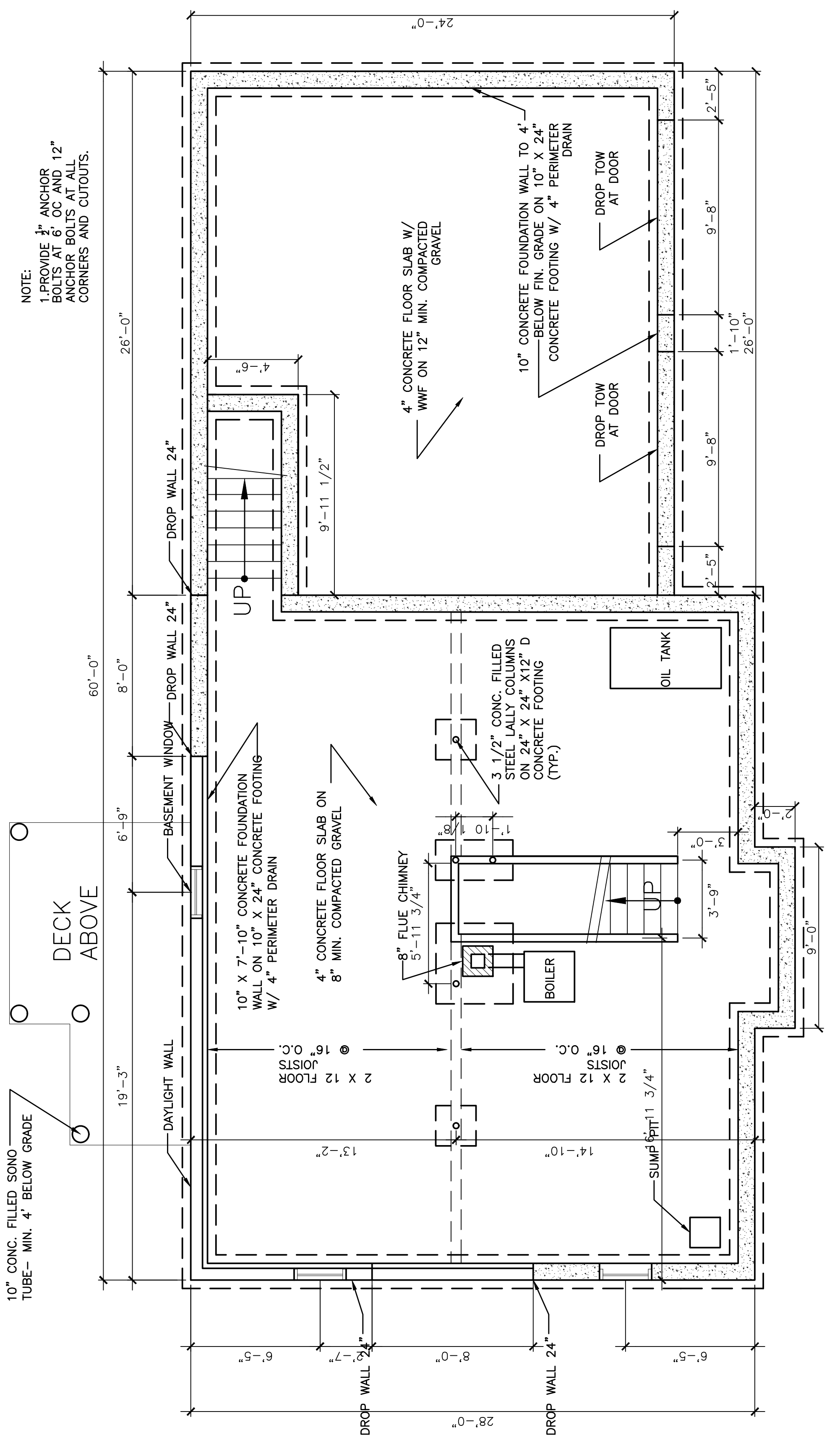


GENERAL NOTES:

1. ALL STAIRS TO BE CONSTRUCTED PER BOCA 1999 BUILDING CODE. HANDRAILS SHALL NOT BE MORE THAN 36" ABOVE TREAD SURFACE. OPENINGS BETWEEN BALLUSTERS SHALL BE LESS THAN 4".
2. THE GARAGE TO HOUSE SEPARATION SHALL BE ONE HOUR GATED. THE DOOR FROM GARAGE TO HOUSE WILL BE ONE HOUR RATED. A CURB OF 4" MIN SHALL BE PROVIDED FROM HOUSE TO GARAGE TO HOUSE OR BASEMENT.
3. REFER TO THE FASTNER SCHEDULE -BOCA 1999 FOR ALL FASTENED CONNECTIONS.
4. ONE SMOKE DETECTOR IN EACH BEDROOM AND EACH BATH. SMOKE DETECTOR SHALL BE INSTALLED. THESE ALL SHALL BE INTER CONNECTED AND HAVE BATTERY BACK UP. (PER BOCA 1999)
5. KITCHEN CABINERY DESIGN BY OTHERS- COORDINATE KITCHEN WINDOW LOCATION W/ CABINERY DESIGN.



NOTE:
 1. PROVIDE 3/4" ANCHOR BOLTS AT 6" OC AND 12" ANCHOR BOLTS AT ALL CORNERS AND CUTOUTS.

10" CONC. FILLED SONO TUBE- MIN. 4' BELOW GRADE

DECK ABOVE

DAYLIGHT WALL

BASEMENT WINDOW

10" X 7'-10" CONCRETE FOUNDATION WALL ON 10" X 24" CONCRETE FOOTING W/ 4" PERIMETER DRAIN

4" CONCRETE FLOOR SLAB ON 8" MIN. COMPACTED GRAVEL

8" FLUE CHIMNEY 5'-11 3/4"

BOILER

3 1/2" CONC. FILLED STEEL LALLY COLUMNS ON 24" X 24" X 12" D CONCRETE FOOTING (TYP.)

OIL TANK

10" CONCRETE FLOOR SLAB W/ WWF ON 12" MIN. COMPACTED GRAVEL

10" CONCRETE FOUNDATION WALL TO 4" BELOW FIN. GRADE ON 10" X 24" CONCRETE FOOTING W/ 4" PERIMETER DRAIN

DROP TOW AT DOOR

DROP TOW AT DOOR

DROP TOW AT DOOR

DROP TOW AT DOOR

DROP TOW AT DOOR

DROP TOW AT DOOR

DROP TOW AT DOOR

DROP TOW AT DOOR

DROP TOW AT DOOR

DROP TOW AT DOOR

DROP TOW AT DOOR

DROP TOW AT DOOR

DROP TOW AT DOOR

DROP TOW AT DOOR

DROP TOW AT DOOR

DROP TOW AT DOOR

DROP TOW AT DOOR

DROP TOW AT DOOR

DROP TOW AT DOOR

DROP TOW AT DOOR

DROP TOW AT DOOR

DROP TOW AT DOOR

DROP TOW AT DOOR

DROP TOW AT DOOR

DROP TOW AT DOOR

DROP TOW AT DOOR

DROP TOW AT DOOR

DROP TOW AT DOOR

DROP TOW AT DOOR

DROP TOW AT DOOR

DROP TOW AT DOOR

DROP TOW AT DOOR

DROP TOW AT DOOR

DROP TOW AT DOOR

DROP TOW AT DOOR

DROP TOW AT DOOR

DROP TOW AT DOOR

DROP TOW AT DOOR

DROP TOW AT DOOR