



William and Eugenie de Rham
 Residence
 1810 Congress St.
 Portland, ME 04102

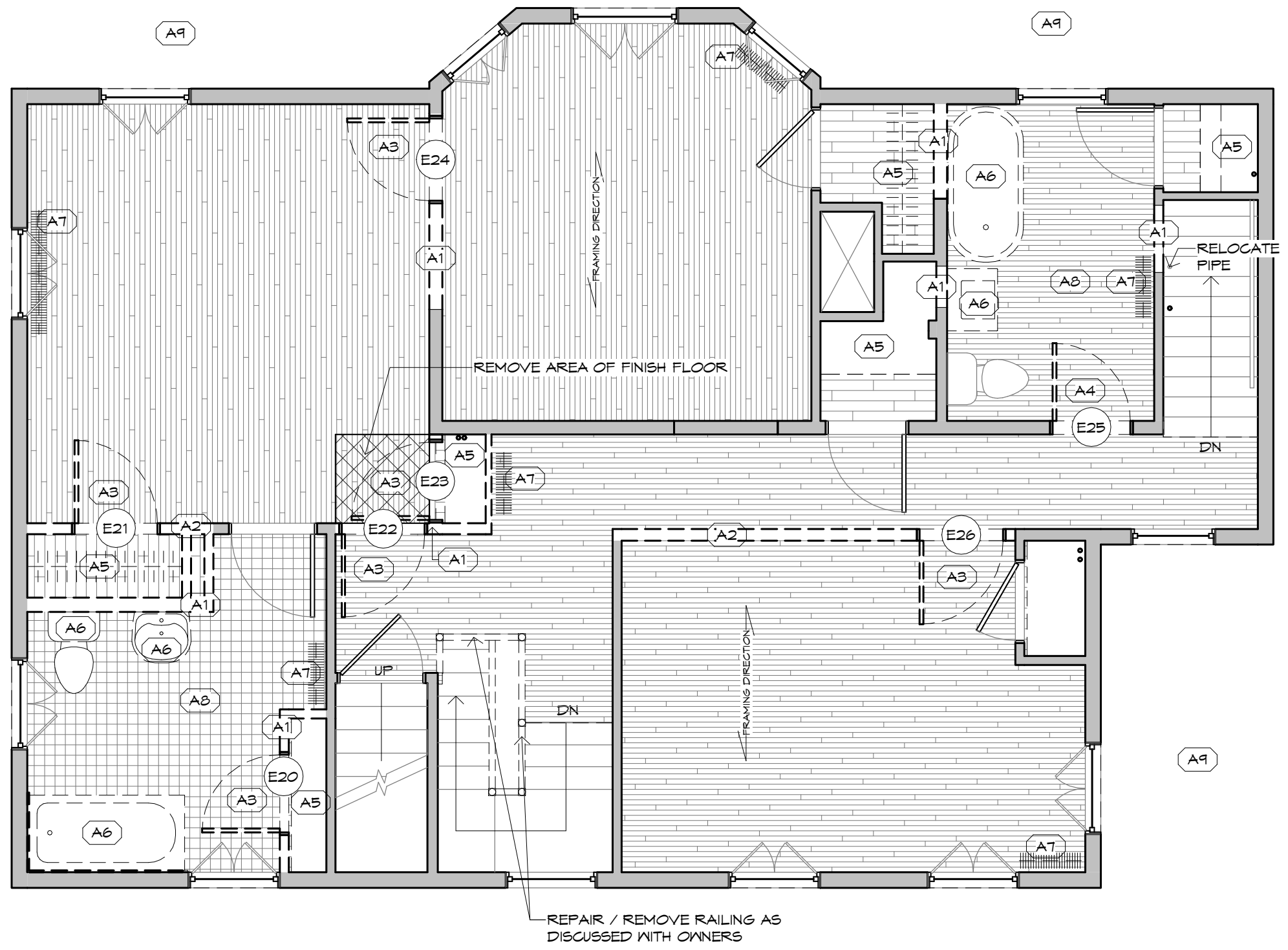
SECOND FLOOR REMOVALS
 PLAN
 SHEET SIZE:
 11" x 17"
 DATE:
 08 / 30 / 2016
 ISSUED FOR REVISION:
 FOR PERMIT / CONSTRUCTION
 DRAWN BY:
 BAW
 Copyright © 2016 Barba + Wheellock

de Rham
 Residence
AD102

LEGEND: REMOVALS & SALVAGE

- SEE ALSO - NOTES SPECIFIC TO EACH FLOOR IN VARIOUS LOCATIONS
- [-] REMOVE PARTITION AND/OR EXTERIOR WALL ASSEMBLY TO EXTENT INDICATED. INCLUDES DOORS & DOOR FRAMES LOCATED WITHIN PARTITION. THICKNESS VARY. FOR PORTIONS REMOVED FOR FUTURE DOOR INSTALLATION, SEE FLOOR PLANS
- [-] REMOVE DOOR, HARDWARE, FRAME, & THRESHOLD (AS INDICATED BY DOOR REMOVAL TYPE) WHERE REMOVAL TYPE IS NOT SPECIFIED, SALVAGE ALL "ORIGINAL" COMPONENTS & TAG WITH ORIGINAL LOCATION. STORE PER OWNER DIRECTIVE.
- (A1) REFER TO KEY NOTES FOR DESCRIPTION OF REMOVALS AS ANNOTATED BY NUMBER.
- [-] REMOVE EXISTING SLAB / FLOOR / ROOF ASSEMBLY.
- [-] REMOVE WINDOW, HARDWARE, & FRAME (AS INDICATED BY WINDOW REMOVAL TYPE) WHERE REMOVAL TYPE IS NOT SPECIFIED, SALVAGE ALL "ORIGINAL" COMPONENTS & TAG WITH ORIGINAL LOCATION. STORE PER OWNER DIRECTIVE.
- DELIVER ANY REMOVALS NOT REUSED IN THIS PROJECT, OR DESIRED BY OWNER TO RESTORE

KEY NOTES REMOVALS & SALVAGE	
A1	REMOVE INTERIOR WALL TO EXTENT SHOWN
A2	REMOVE INTERIOR BEARING (ASSUMED) WALL TO EXTENT SHOWN
A3	REMOVE DOOR & FRAME, SALVAGE SELECT DOORS AND CASINGS FOR REUSE
A4	REMOVE DOOR ONLY, REVERSE SWING
A5	REMOVE BUILT-IN SHELVES / CABINETS
A6	REMOVE PLUMBING FIXTURES
A7	REMOVE RADIATOR
A8	REMOVE EXISTING FINISH FLOOR TO SUBFLOOR
A9	REMOVE KNOB AND TUBE WIRING ON SECOND FLOOR, CONECT 3RD FLOOR KNOB & TUB WIRING AT JUNCTION BOXES IN CLOSETS



1 **SECOND FLOOR REMOVALS**
 AD102 1/4" = 1'-0"