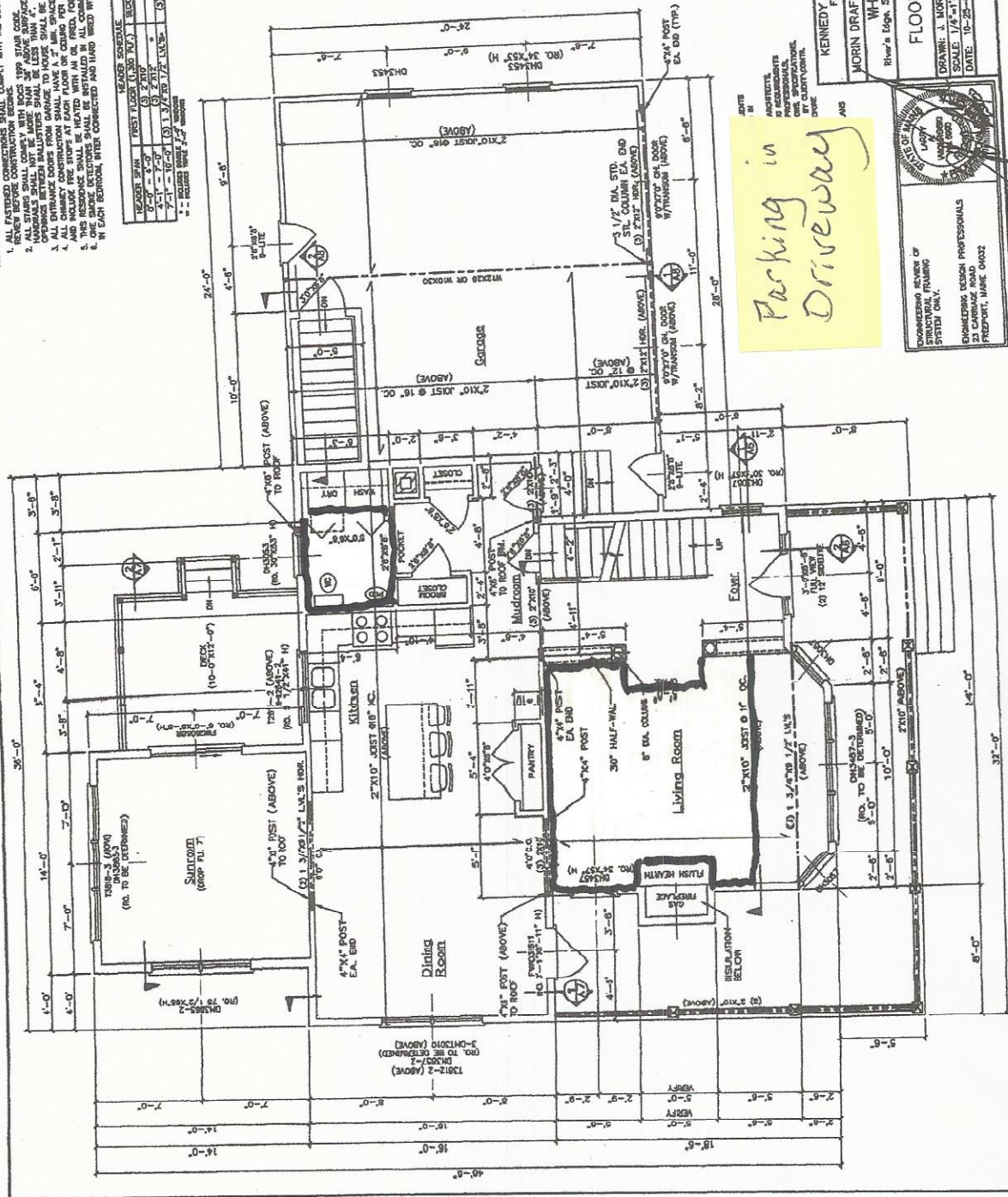


GENERAL NOTES (SEE LOCAL 1989 BUILDING CODE)

1. ALL FASTENED CONNECTIONS SHALL COMPLY WITH THE 2004 1989 FATHERS SCHEDULE.
2. REVIEW BEFORE CONSTRUCTION SHALL COMPLY WITH THE 2004 1989 FATHERS SCHEDULE.
3. ALL DIMENSIONS SHALL BE MORE THAN 1/8" LESS THAN 1/4".
4. ALL DIMENSIONS SHALL BE MORE THAN 1/8" LESS THAN 1/4".
5. ALL DIMENSIONS SHALL BE MORE THAN 1/8" LESS THAN 1/4".
6. ALL DIMENSIONS SHALL BE MORE THAN 1/8" LESS THAN 1/4".
7. ALL DIMENSIONS SHALL BE MORE THAN 1/8" LESS THAN 1/4".
8. ALL DIMENSIONS SHALL BE MORE THAN 1/8" LESS THAN 1/4".
9. ALL DIMENSIONS SHALL BE MORE THAN 1/8" LESS THAN 1/4".
10. ALL DIMENSIONS SHALL BE MORE THAN 1/8" LESS THAN 1/4".

FLOOR FINISHES	
1. 1/2" GYP. BOARD	(1) 1/2" GYP. BOARD
2. 1/2" GYP. BOARD	(2) 1/2" GYP. BOARD
3. 1/2" GYP. BOARD	(3) 1/2" GYP. BOARD
4. 1/2" GYP. BOARD	(4) 1/2" GYP. BOARD
5. 1/2" GYP. BOARD	(5) 1/2" GYP. BOARD
6. 1/2" GYP. BOARD	(6) 1/2" GYP. BOARD
7. 1/2" GYP. BOARD	(7) 1/2" GYP. BOARD
8. 1/2" GYP. BOARD	(8) 1/2" GYP. BOARD
9. 1/2" GYP. BOARD	(9) 1/2" GYP. BOARD
10. 1/2" GYP. BOARD	(10) 1/2" GYP. BOARD



Parking in Driveway

KENNEDY & WALSH CONSTRUCTION
 FARMINGTON, MAINE 04103

MORIN DRAFTING GORHAM, ME. 893-2452
WHITTEN RESIDENCE
 River's Edge, Stowebrook Farm, Poland, Lot #20

FLOOR PLAN-1ST FLR.



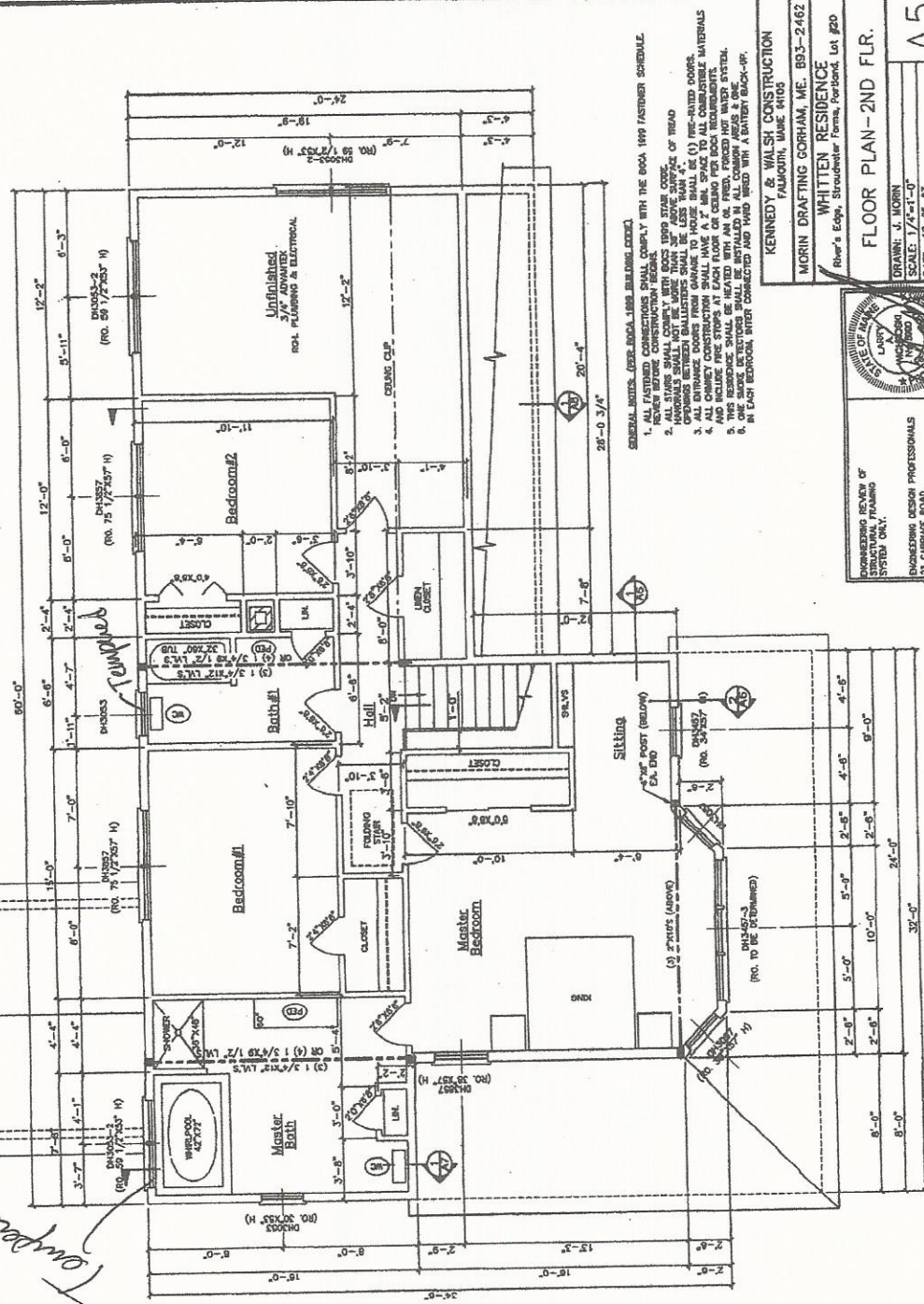
DESIGNED BY: MORIN
 SCALE: 1/8" = 1'-0"
 DATE: 10-22-03

ENGINEERING DESIGN PROFESSIONALS
 23 CARROLL ST. SUITE 200
 PORTLAND, MAINE 04103

*Clients will use the living room
 (and bathroom if necessary)*

ALL DIMENSIONS, PLANS, SECTIONS ETC. ARE PROVIDED TO OUR CLIENTS BASED UPON INFORMATION PROVIDED BY THE CLIENT AND DRAWN IN ACCORDANCE WITH CURRENT BUILDING CODES AND REGULATIONS. STRUCTURAL ENGINEERS OR LOAD CALCULATIONS ARE REQUIRED FOR FOUNDATIONS AND ROOFS. ALL LOADS SHALL BE APPROVED BY AUTHORITY. ALL DIMENSIONS, SPECIFICATIONS AND CONSTRUCTION TECHNIQUES AND METHODS SHALL BE REVIEWED BY CLIENT/OWNER IF THESE ARE NOT APPROVED BY CLIENT AND/OR CONTRACTOR BEFORE CONSTRUCTION. MORIN DRAFTING ASSOCIATES AND LIABILITY FOR CONSTRUCTION DEFECTS OR DAMAGES AND/OR RETROFIT TO PLANS BY CLIENT AND/OR CONTRACTOR.

HEADER SCHEDULE	
HEADER SPAN	FIRST FLOOR (LOAD P.F.)
0'-0" - 4'-0"	(1) 2"x10"
4'-0" - 8'-0"	(2) 2"x10"
8'-0" - 12'-0"	(3) 1 1/2"x8 1/2" L.V.S.
12'-0" - 16'-0"	(4) 1 1/2"x8 1/2" L.V.S.
16'-0" - 20'-0"	(5) 1 1/2"x8 1/2" L.V.S.
20'-0" - 24'-0"	(6) 1 1/2"x8 1/2" L.V.S.
24'-0" - 28'-0"	(7) 1 1/2"x8 1/2" L.V.S.
28'-0" - 32'-0"	(8) 1 1/2"x8 1/2" L.V.S.
32'-0" - 36'-0"	(9) 1 1/2"x8 1/2" L.V.S.
36'-0" - 40'-0"	(10) 1 1/2"x8 1/2" L.V.S.



- GENERAL NOTES: (SEE ENCL. FOR BEARING CODES)
1. ALL FASTENED CONNECTIONS SHALL COMPLY WITH THE 2004 IBC FASTENER SCHEDULE.
 2. REVIEW BEFORE CONSTRUCTION WITH BOSS 8900 STATE CODE.
 3. MATERIALS SHALL NOT BE MORE THAN 1/4" ABOVE SURFACE OF TREAD.
 4. SPACERS BETWEEN BALUSTRADES SHALL BE 4" MAX. SPACE TO ALL COMBUSTIBLE MATERIALS.
 5. ALL CHIMNEY CONSTRUCTION SHALL HAVE A 2" MIN. SPACE TO ALL COMBUSTIBLE MATERIALS AND INCLUDE FIRE STOPS AT EACH FLOOR OF CHIMNEY PER IBC AND WMA SYSTEM.
 6. THE SERVICE VENTS SHALL BE INSTALLED IN ALL COMMON AREAS & ONE IN EACH BEDROOM. ENTER CONNECTED AND VENTED WITH A BATTERY BACK-UP.
 7. IN EACH BEDROOM, ENTER CONNECTED AND VENTED WITH A BATTERY BACK-UP.

KENNEDY & WALSH CONSTRUCTION
 FALMOUTH, MAINE 04103

MORIN DRAFTING CORP. ME. 893-2462
 WHITTEN RESIDENCE
 River's Edge, Stroudwater Farms, Portland, Lot #20

FLOOR PLAN - 2ND FLR.



UNDESIGNED PORTION OF STRUCTURAL FRAMING SYSTEM ONLY.

REGISTERED PROFESSIONAL ENGINEER
 25 CARRINGTON BLVD
 FALMOUTH, MAINE 04103

DRAWN: J. MORIN
 SCALE: 1/4"=1'-0"
 DATE: 10-25-03

A5