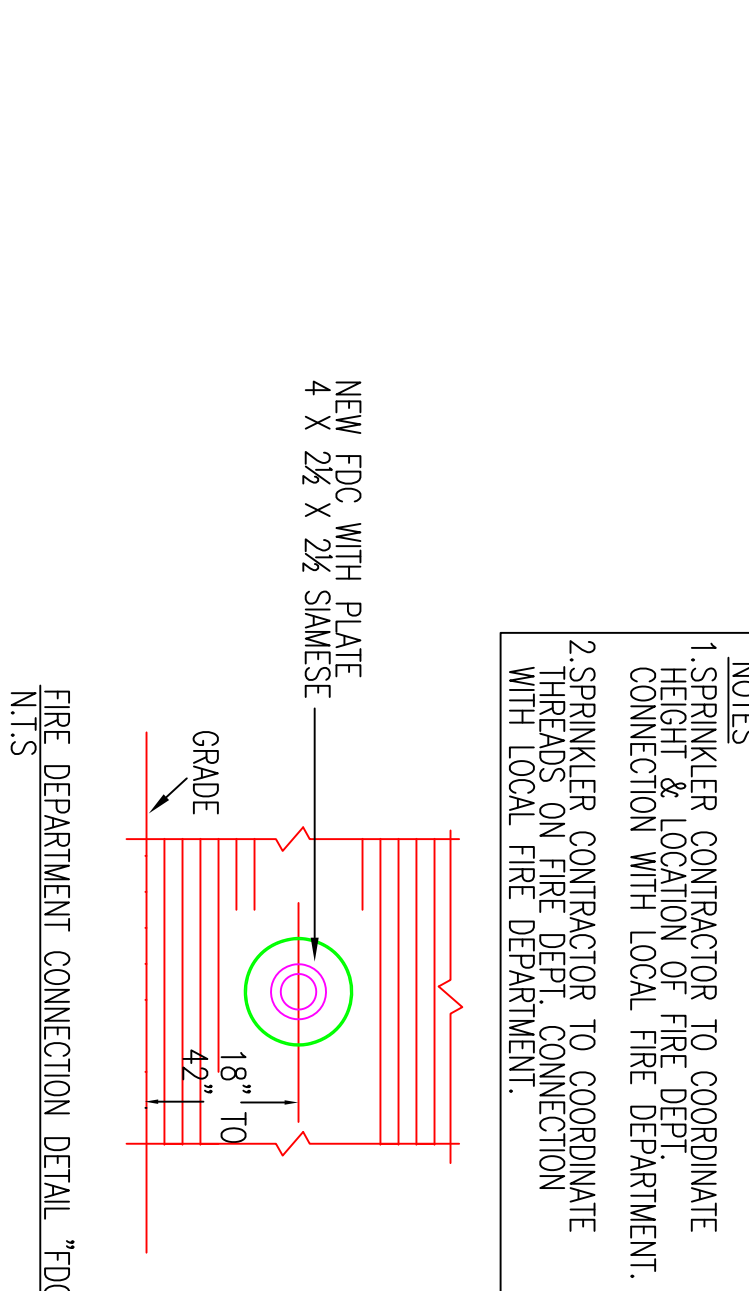
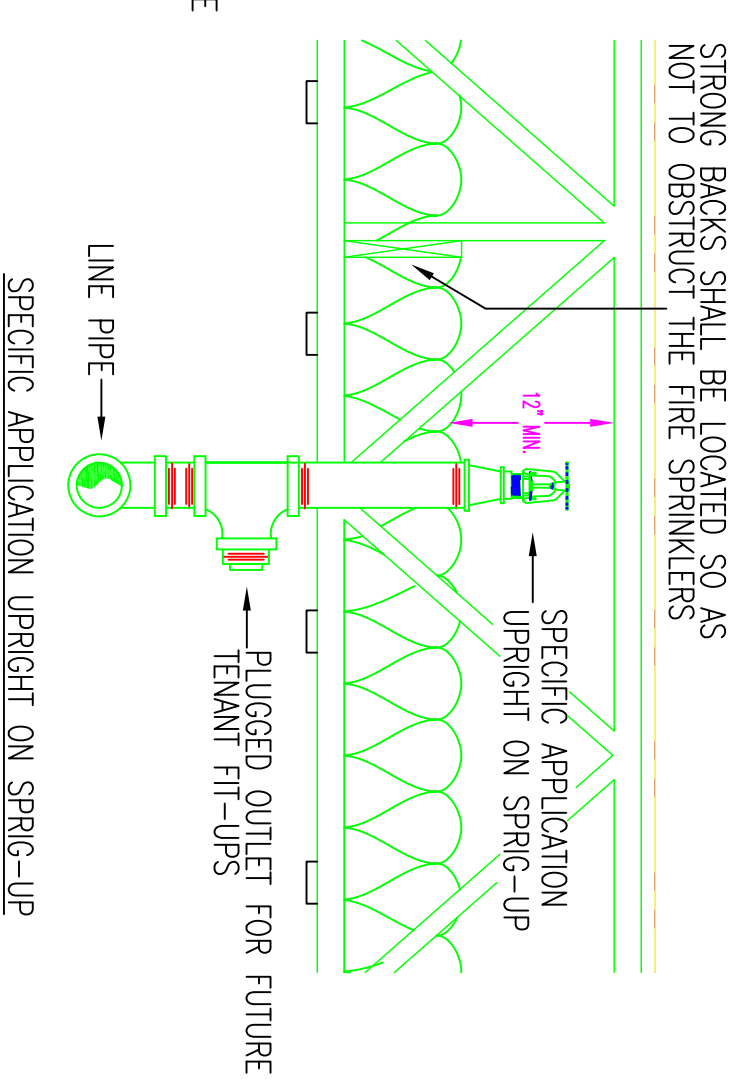
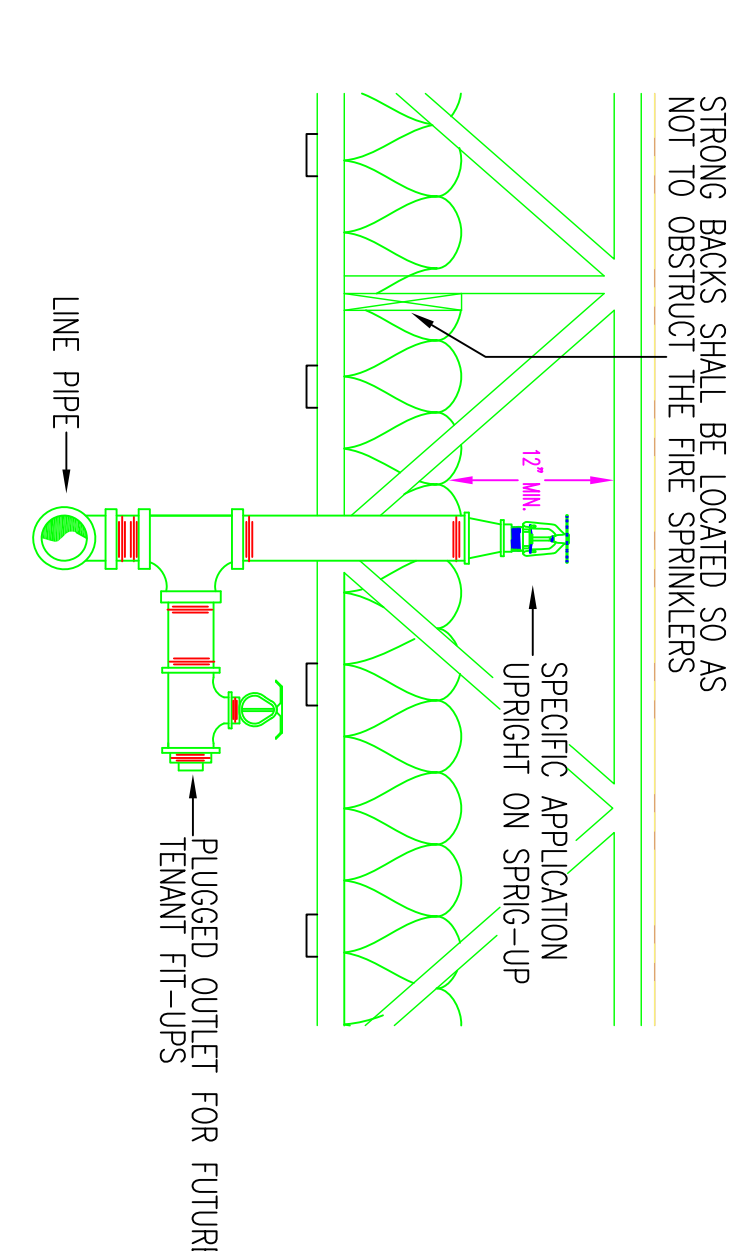


- RISER LEGEND**
- ① UNI-FLANGE (BY OTHERS)
 - ② REDUCING SPOOL PIECE WITH 4" x 1 1/4" FLANGE
 - ③ WATER PRESSURE GAUGE
 - ④ 4" DERINGER MODEL 20 DOUBLE CHECK BACKFLOW PREVENTER WITH TAMPERED BUTTERFLY VALVES
 - ⑤ 3" VICTAULIC 747M RISER MODULE WITH FLOW SWITCH, DRAIN VALVE, RELIEF VALVE AND WATER PRESSURE GAUGE
 - ⑥ BACKFLOW PREVENTER TESTING BYPASS
 - ⑦ 12 COUNT SPARE HEAD BOX WITH WRENCH
 - ⑧ PIPE STAND
 - ⑨ AUXILIARY DRAIN
 - ⑩ 4" x 2 1/2" x 2 1/2" SWAMEE FIRE DEPARTMENT CONNECTION (SEE FIRST FLOOR PLAN)
 - ⑪ MAN DRAIN EXTERIOR DISCHARGE (SEE FIRST FLOOR PLAN)
 - ⑫ 1/2" AUTOMATIC BALL DRIP
 - ⑬ 4" BUTTERFLY CONTROL VALVE WITH TAMPER SWITCH FOR BACKFLOW TESTING BYPASS
 - ⑭ 4" BUTTERFLY CONTROL VALVE WITH TAMPER SWITCH (BASEMENT SYSTEM)
 - ⑮ 3" BUTTERFLY CONTROL VALVE WITH TAMPER SWITCH (BASEMENT SYSTEM)
 - ⑯ DRAIN VALVE
 - ⑰ 3" GROOVED CHECK VALVE
 - ⑱ 3" GROOVED CHECK VALVE
 - ⑲ 4" GROOVED CHECK VALVE

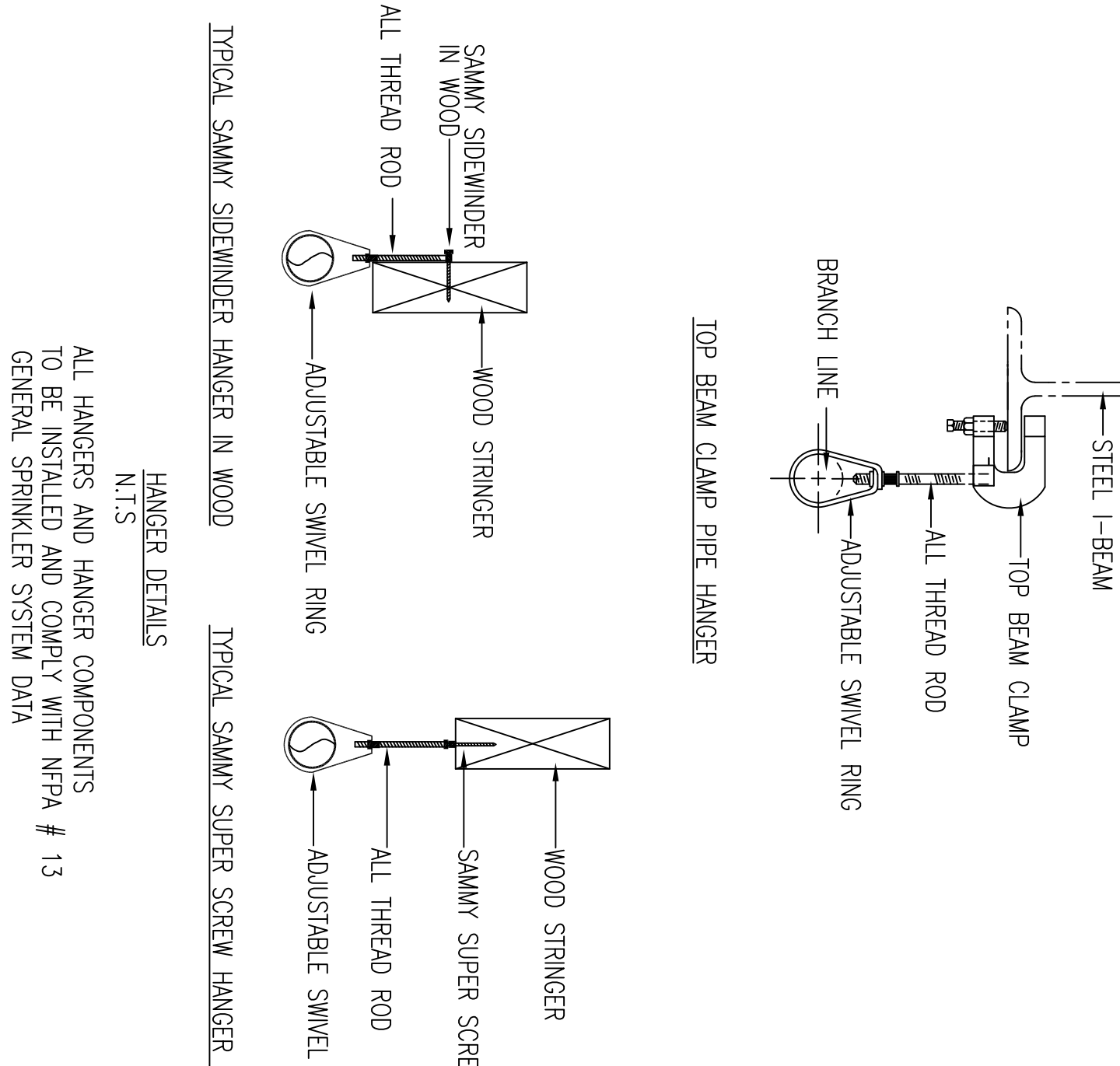
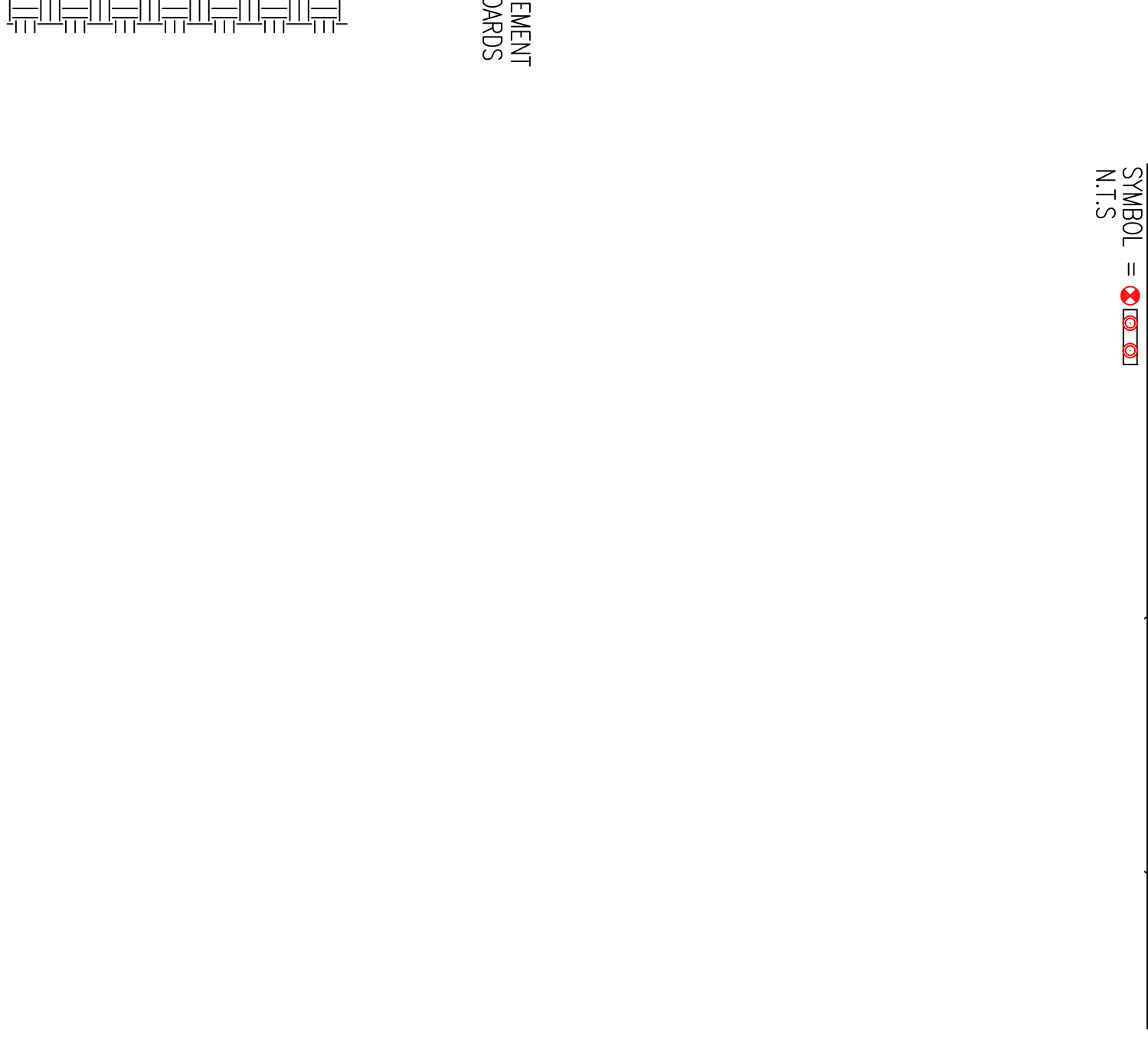
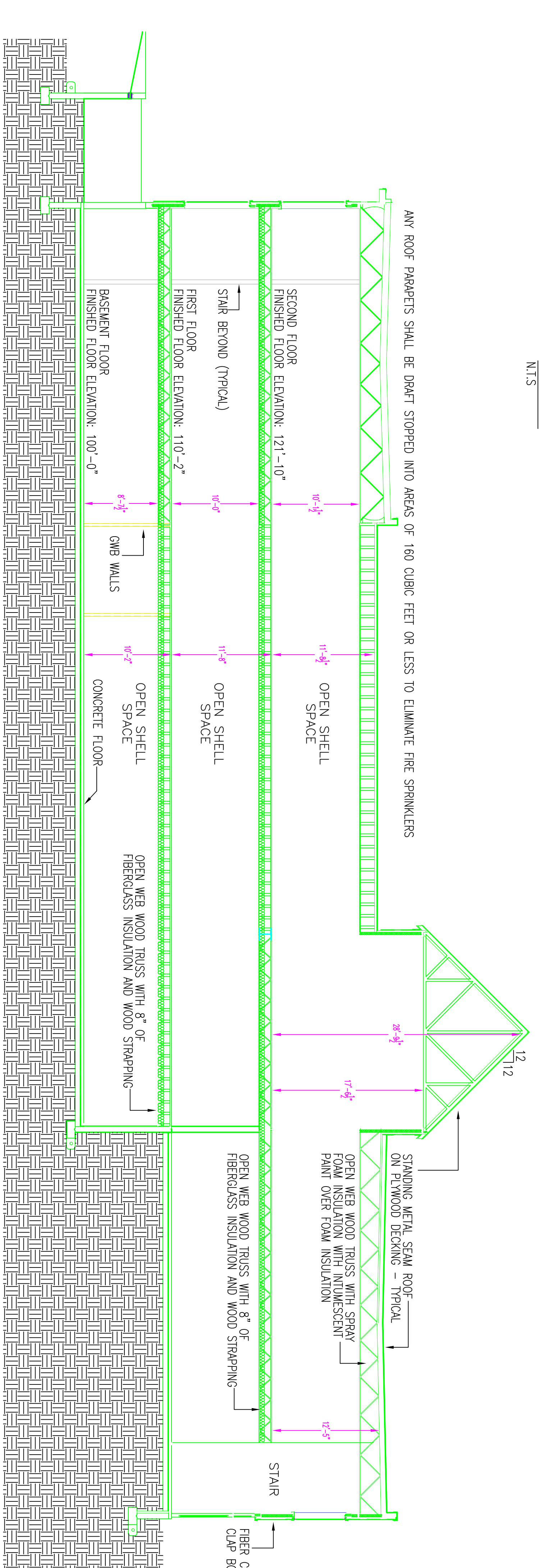
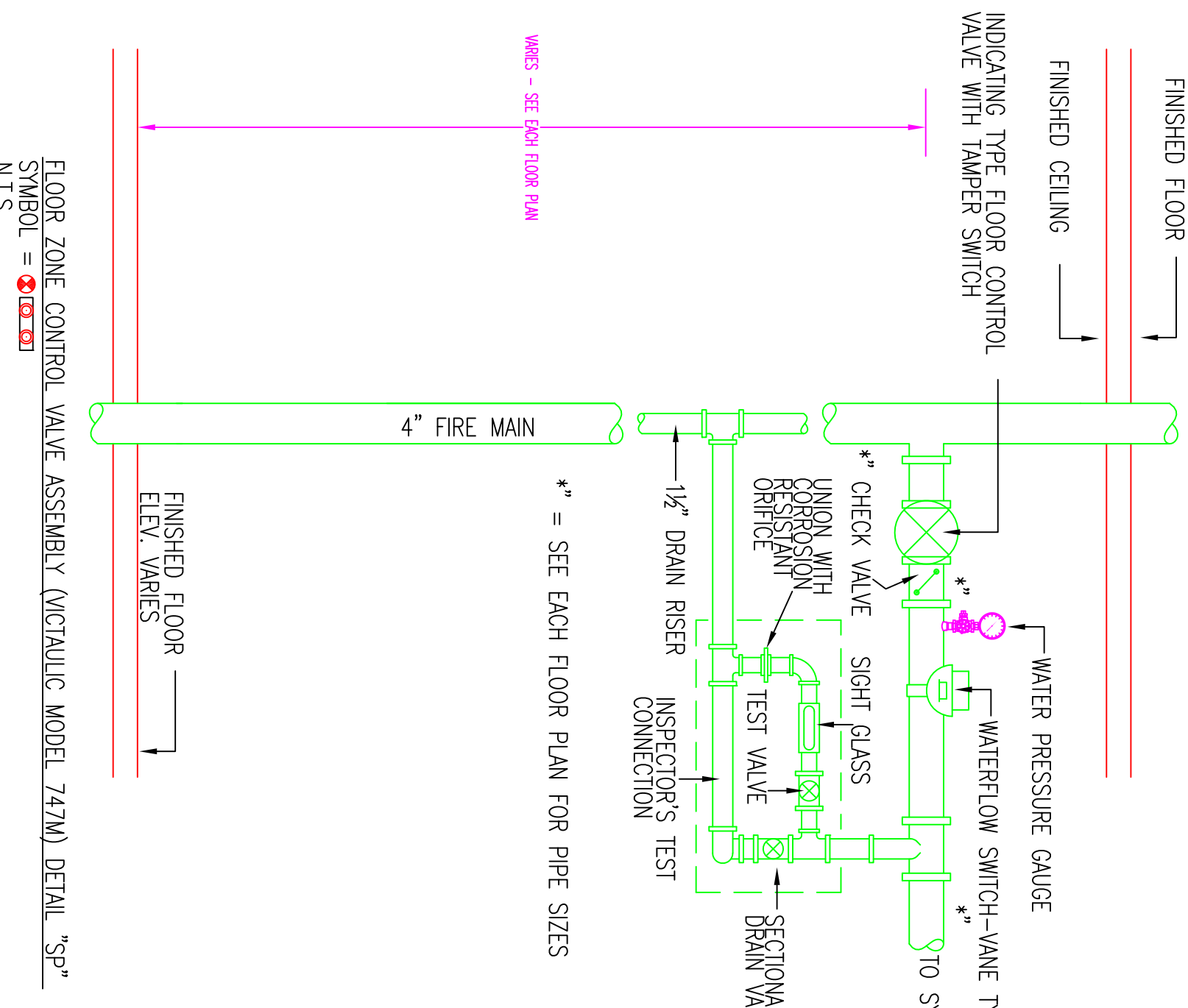
VICTAULIC V3416 HORIZONTAL SIDEWALL SPRINKLER PERFORMANCE (K8.0)		
ROOM SIZE	FLOW RATE (GPM)	END SPRINKLER PRESSURE (PSI)
16' x 16'	26	10.6
16' x 18'	29	13.2
16' x 20'	32	16.0

- NOTES**
1. SPRINKLER CONTRACTOR TO COORDINATE SPRINKLER CONTROL OR FIRE DEPT CONNECTION WITH LOCAL FIRE DEPARTMENT.
 2. SPRINKLER CONTRACTOR TO COORDINATE HEADS ON FIRE DEPT CONNECTION WITH LOCAL FIRE DEPARTMENT.



GENERAL SPRINKLER SYSTEM DATA

1. BUILDING GENERAL CONTRACTOR: WRIGHT-BRYAN CONSTRUCTION, INC. 10 DANFORTH STREET, PORTLAND, MAINE 04101
2. BUILDING ADDRESS: 1945 CONGRESS STREET, PORTLAND, MAINE
3. CONSTRUCTION: NEW WOOD FRAME STRUCTURE
4. AREA PROTECTED BY THE SPRINKLER SYSTEM: 31,857 SQ. FT. OF WHICH 12,135 SQ. FT. IS AT THE INTERSTITIAL SPACE LEVEL
5. MAXIMUM SPRINKLER HEAD SPACING: 15' x 15'
6. MAXIMUM SQUARE FOOTAGE PER SPRINKLER HEAD: 130 SQ. FT. LIGHT HAZARD (LIGHT WOOD FRAMING), 130 SQ. FT. ORDINARY HAZARD
7. SPRINKLER SYSTEM DESIGNER: OKD
8. SPRINKLER SYSTEM DESIGN REVIEWED BY: JMD NICET LEVEL III CERT # 116803 RMS # 839
9. CONTRACTOR'S MAINE STATE LICENSE NUMBER: 10448



GENERAL NOTES:

THE SPRINKLER SYSTEM INSTALLATION SHALL COMPLY WITH NFPA 13 STANDARD 2016 EDITION & AND THE LOCAL AHJ AND THE LOCAL AHJ SPRINKLER SYSTEM PIPING 1/2" AND LARGER TO BE BLACK SCHEDULE 10 AND 1/2" AND LARGER TO BE SCHEDULE 40 JOINED WITH THREADED FITTINGS. THE OWNER IS TO PROVIDE SUFFICIENT HEAT THROUGHOUT THE ENTIRE BUILDING TO PREVENT THE SPRINKLER SYSTEM PIPING AND COMPONENTS FROM FREEZING (MINIMUM 40°F).

ALL WIRING IS TO BE DONE BY OTHERS.

OCCUPANCY DESCRIPTION AND CLASSIFICATION: MECHANICAL & STORAGE ROOMS / ORDINARY HAZARD GROUP II

SCOPE OF WORK

A. THE CONTRACTOR IS RESPONSIBLE FOR ALL WORK, MATERIALS, AND LABOR REQUIRED TO SATISFY A COMPLETE WORKING SYSTEM WHETHER SPECIFIED OR IMPLIED.

B. ALL EQUIPMENT AND MATERIALS SHALL BE AS SPECIFIED OR APPROVED EQUAL BY THE ENGINEER OR ARCHITECT.

MISCELLANEOUS

A. DO NOT SCALE THIS DRAWING FOR EXACT DIMENSIONS. VERIFY ALL FIGURES, CONDITIONS, AND DIMENSIONS AT THE JOB SITE.

B. THE SPRINKLER PLANS ARE INTENDED TO BE DISPARAGMATIC, THEY ARE NOT INTENDED TO SHOW EVERY ITEM IN ITS EXACT LOCATION.

SYMBOLS

FE & σ=σ = INDICATES FINISH FLOOR UP TO CENTERLINE OF PIPE

BT & σ=σ = INDICATES BOTTOM OF DECK DOWN TO CENTERLINE OF PIPE

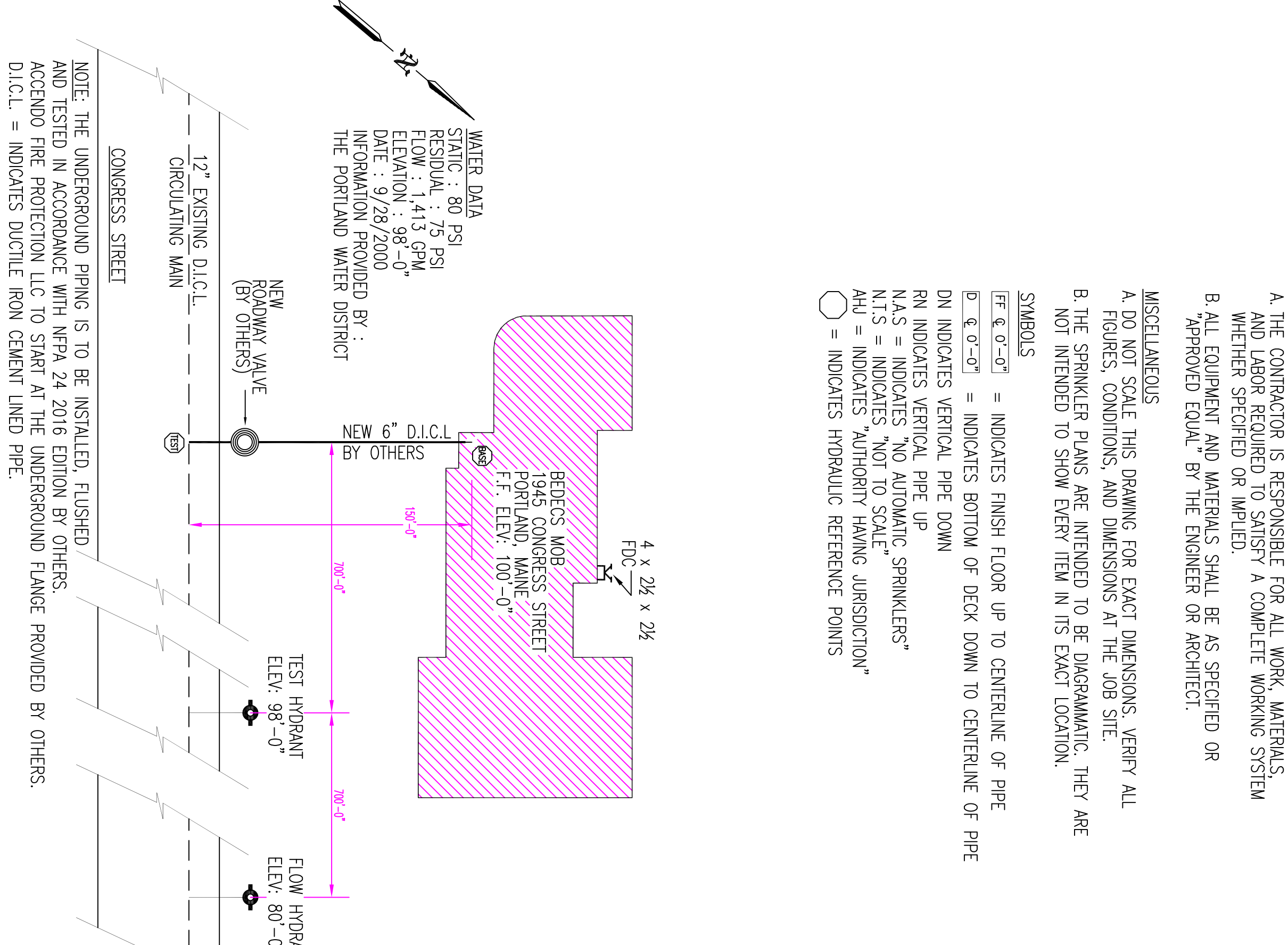
RN INDICATES VERTICAL PIPE DOWN

NAS = INDICATES "NO AUTOMATIC SPRINKLERS"

NAS = INDICATES "NOT TO SCALE"

AHJ = INDICATES "AUTHORITY HAVING JURISDICTION"

○ = INDICATES HYDRAULIC REFERENCE POINTS



General Notes

1. All Pipe Locations are to be Field Measured Prior to Fabrication and Installation by Sprinkler Contractor.
2. All Dimensions Shown are Center to Center.
3. High Temperature Heads are to be Field Located Where Required.
4. All Pipes and Hangers are to be Installed per NFPA 413.
5. Hangers are to be ULL Listed and P.M. Approved.

Symbols

Symbol	Description
○	Hydraulic Reference Point
○	30-d) Base of Top of Steel
○	Denotes Hanger Location
○	Riser up or down

REVISION BLOCK

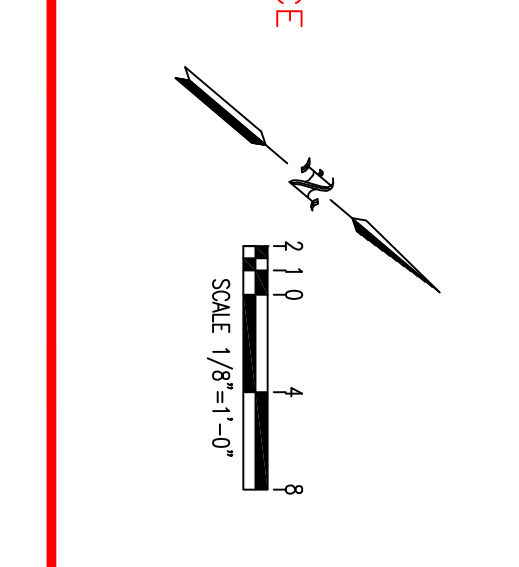
Revision	Description

Drawing FP-1

Title	Drawn By	Scale	Date
Contract No. 17-1015	OKD	1/8" = 1'-0"	6/28/17

Job: BERDECS MOB 1945 CONGRESS STREET PORTLAND, MAINE

Contractor: ACCENDO FIRE PROTECTION LLC 38 ADDITION RD GREENE, MAINE



General Notes

1. All Pipe Locations are to be Field Measured Prior to Fabrication and Installation by Sprinkler Contractor.
2. All Dimensions Shown are Center to Center.
3. High Temperature Heads are to be Field Located Where Required.
4. All Pipes and Hangers are to be Installed per NFPA 413.
5. Hangers are to be ULL Listed and P.M. Approved.

Symbols

Symbol	Description
○	Hydraulic Reference Point
○	30-d) Base of Top of Steel
○	Denotes Hanger Location
○	Riser up or down

REVISION BLOCK

Revision	Description

Drawing FP-1

Title	Drawn By	Scale	Date
Contract No. 17-1015	OKD	1/8" = 1'-0"	6/28/17

Job: BERDECS MOB 1945 CONGRESS STREET PORTLAND, MAINE

Contractor: ACCENDO FIRE PROTECTION LLC 38 ADDITION RD GREENE, MAINE