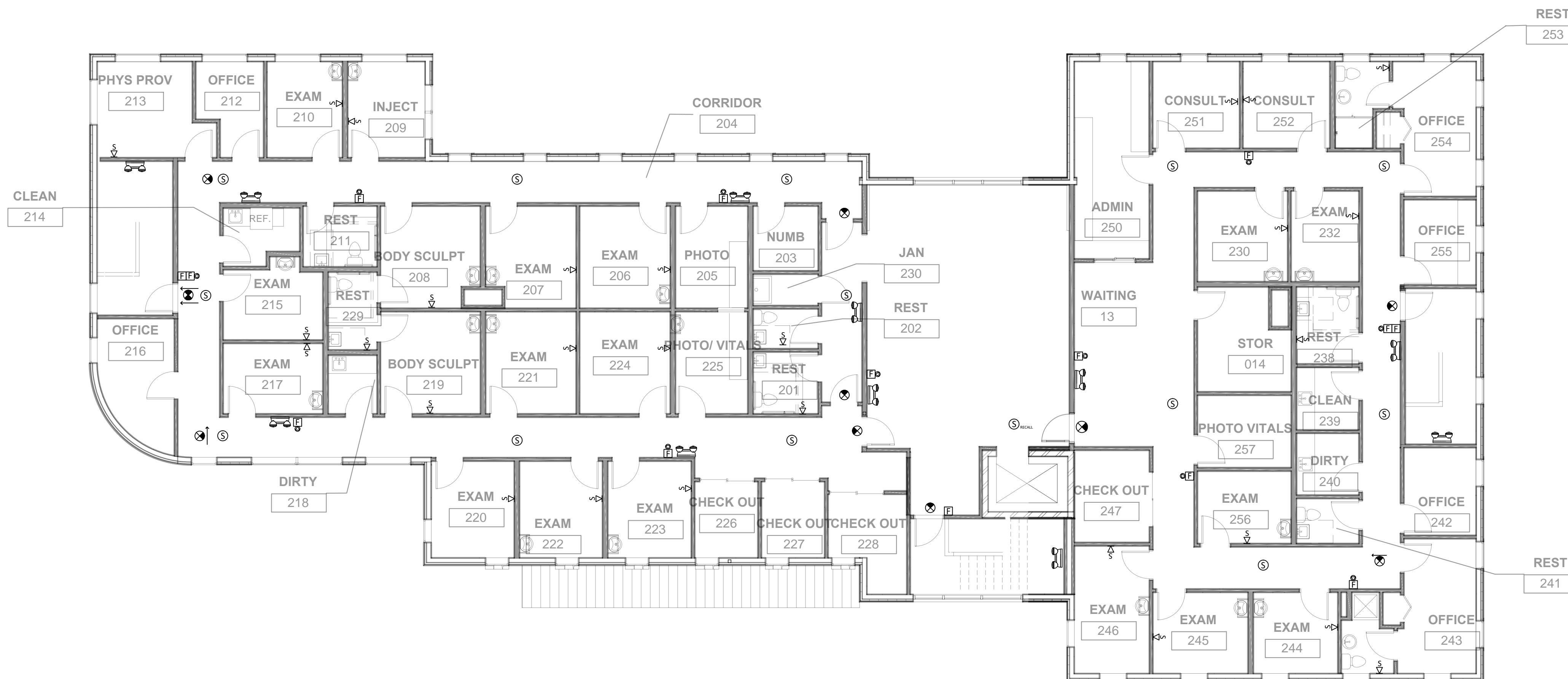


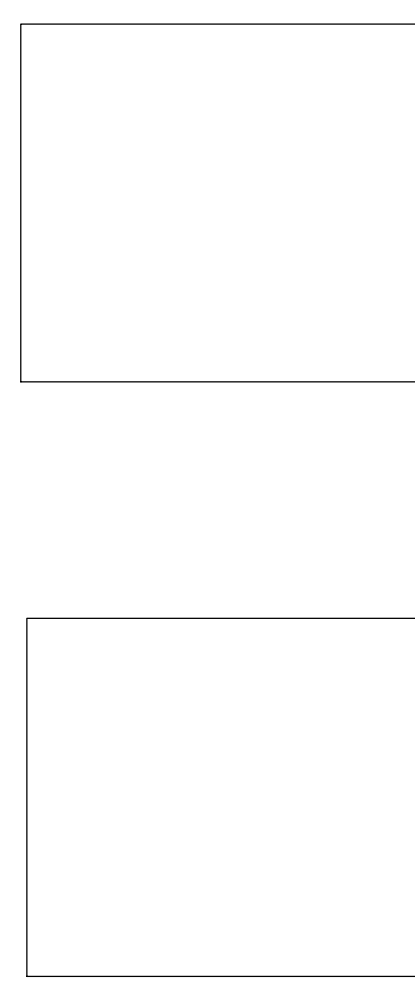
1ST FLOOR - LIFE SAFETY

SCALE: 1/8" = 1-0'



2ND FLOOR - LIFE SAFETY

SCALE: 1/8" = 1-0'



B.H. Milliken
ELECTRICAL CONTRACTORS
235 PRESUMPCOT STREET
PORTLAND, MAINE 04103
207.879.1877

MEDICAL OFFICES
DR. BEDECS
1945 CONGRESS STREET
PORTLAND, MAINE

TITLE:
LIFE SAFETY
REV: 12/15/17
SCALE: 1/8" = 1-0'
DATE: 4/5/17
SHEET:

E200