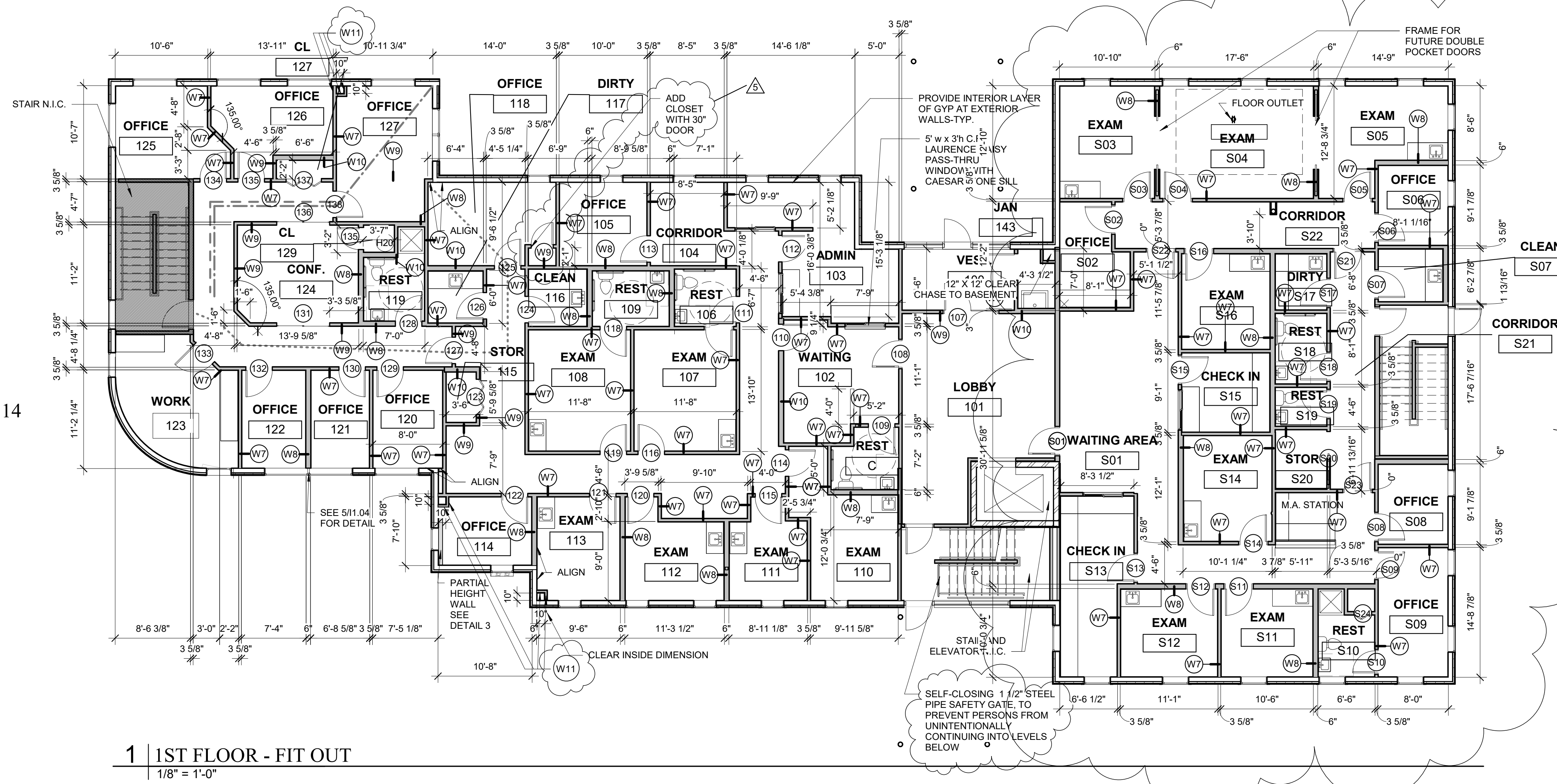
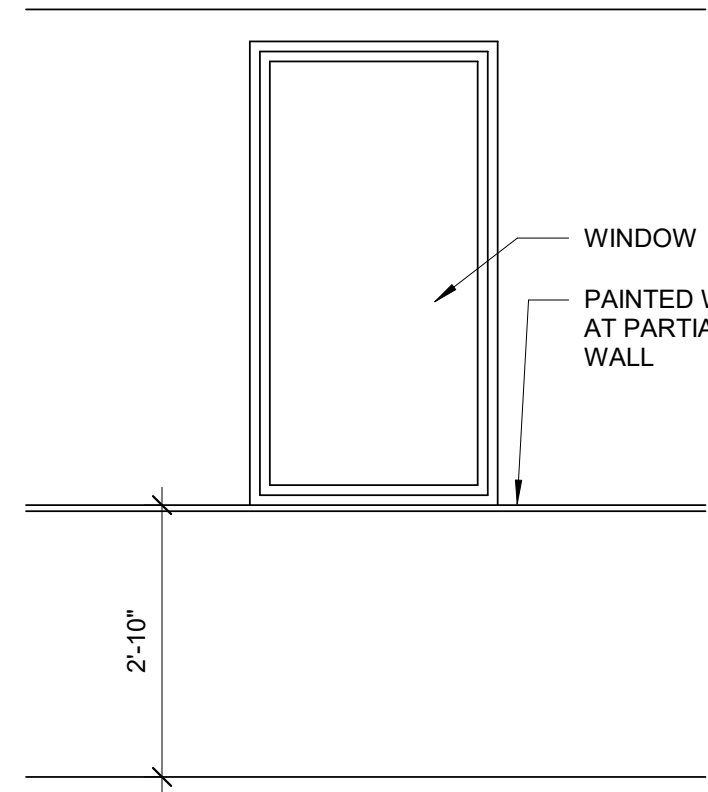
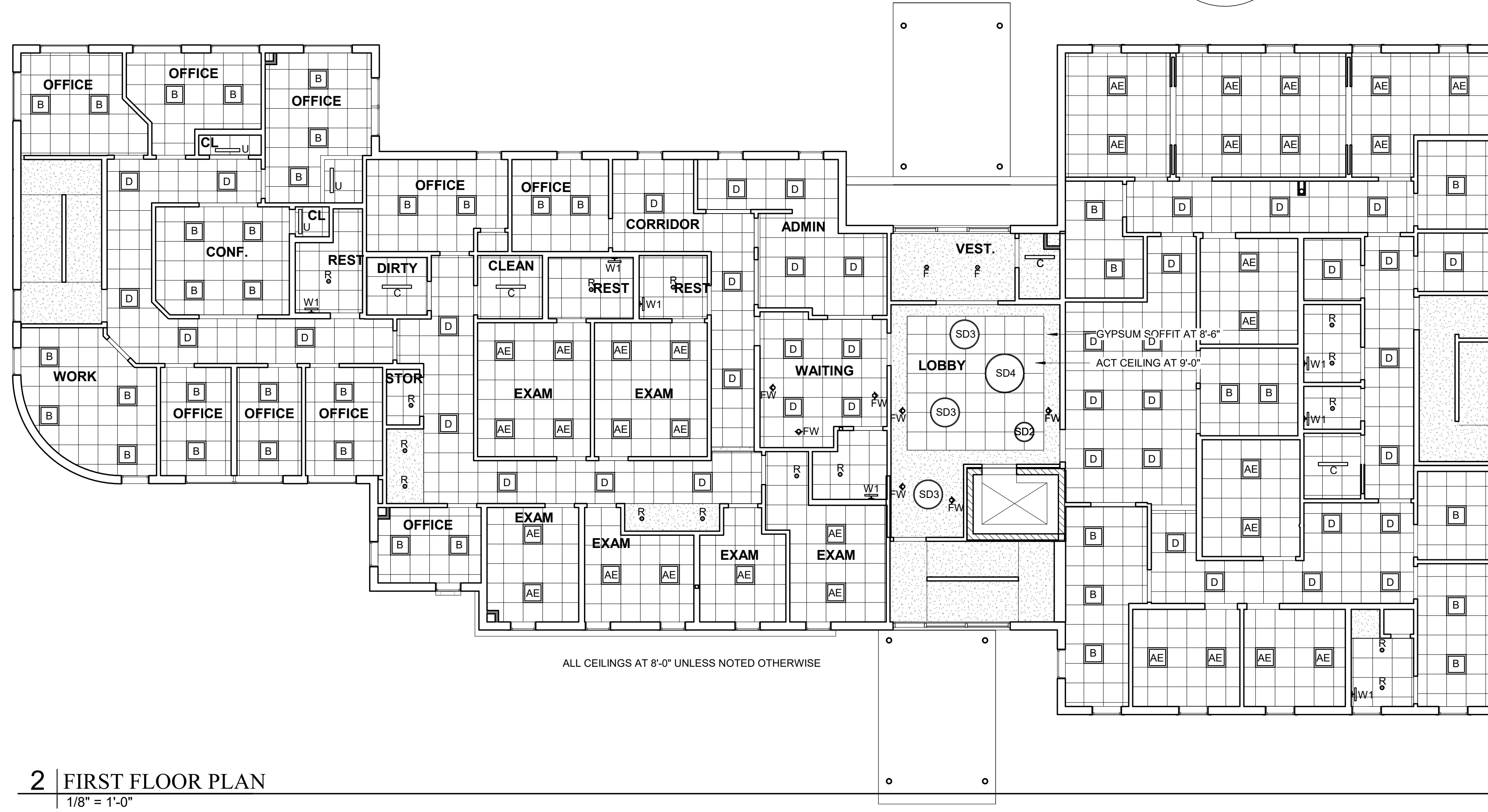


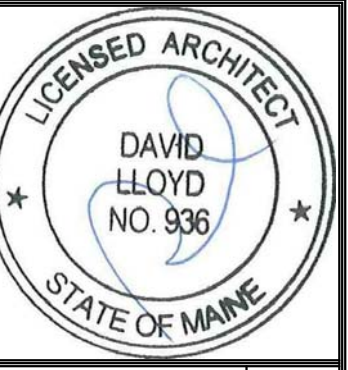
3 PARTIAL HEIGHT WALL OFFICE 114
1/2" = 1'-0"



1 1ST FLOOR - FIT OUT
1/8" = 1'-0"



2 FIRST FLOOR PLAN
1/8" = 1'-0"



Prepared For:
Diversified Partners LLC

Consultant:
ARCHETYPE architects
48 Union Wharf Portland, Maine 04101
(207) 772-6022 ARCHETYPE@ARCHETYPEPA.COM

Architect:
ARCHETYPE architects
48 Union Wharf Portland, Maine 04101
(207) 772-6022 ARCHETYPE@ARCHETYPEPA.COM

Project:
MEDICAL OFFICES
1945 CONGRESS STREET, PORTLAND, MAINE

Revisions:
5 8/11/17 T/REVISION
6 9/19/17 REVISION FOR PERMIT
8 1/30/18 REVISION

Date:
1/25/2018
Scale:
As indicated
FIRST FLOOR FIT OUT
11.01