

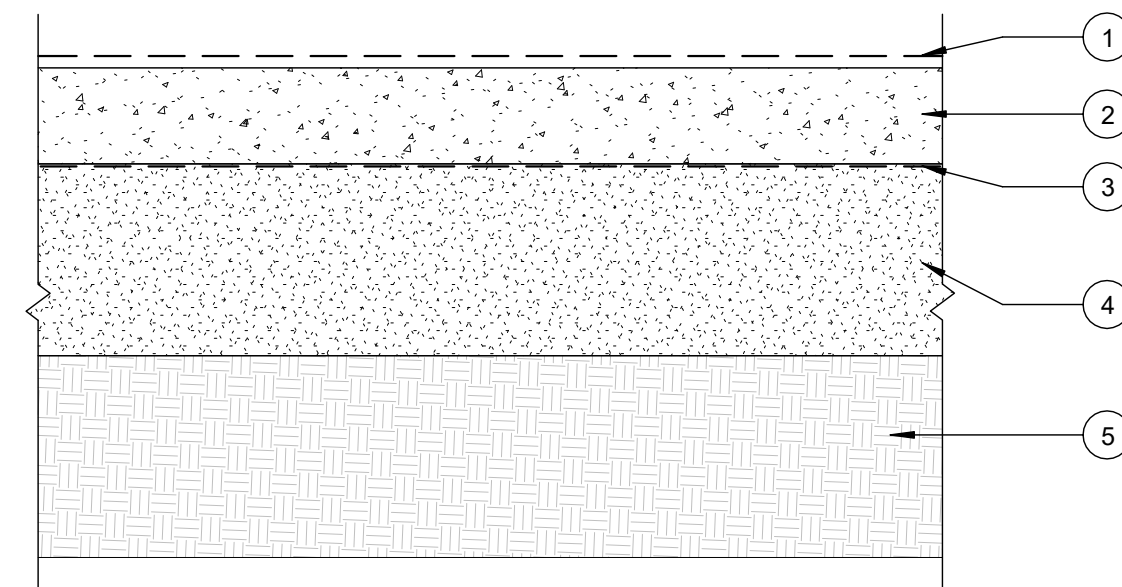
LABEL 1 HR

1 HR RATED CEILING ASSEMBLY
UL NO. L512

- ELEVATOR SHAFT CEILING FRAMING** - 2x8 FIRE RETARDANT JOISTS AT 24" OC. OR 2X10 FIRE RETARDANT JOISTS AT 16" OC. - SEE STR.
- FINISH FLOORING** - 19/32 IN. PLYWOOD, MIN GRADE "UNDERLAYMENT". FACE GRAIN OF PLYWOOD TO BE PERPENDICULAR TO JOISTS WITH JOINTS STAGGERED.
- SUBFLOORING** - MIN 15/32 IN. THICK WOOD STRUCTURAL PANELS, MIN GRADE "C-D" OR "SHEATHING". FACE GRAIN OF PLYWOOD OR STRENGTH AXIS OF PANELS TO BE PERPENDICULAR TO THE JOISTS WITH JOINTS STAGGERED.
- GYPHUM SHEATHING** - NOM 5/8 IN. THICK, 4 FT WIDE GYPHUM BOARD, INSTALLED WITH LONG DIMENSION PERPENDICULAR TO JOISTS AND SECURED WITH 6D CEMENT COATED COOLER NAILS, SPACED 6 IN. OC. FOR THE 1/2 IN. BOARD AND 5/8 IN. THICK BOARD, RESPECTIVELY. NAILS SPACED 3/4 AND 1/2 IN. FROM SIDE AND END JOINTS, RESPECTIVELY
- FINISHING SYSTEM** - (NOT SHOWN) - VINYL DRY OR PREMIXED JOINT COMPOUND, APPLIED IN TWO COATS TO JOINTS AND SCREW HEADS. NOM 2 IN. WIDE PAPER TAPE EMBEDDED IN FIRST LAYER OF COMPOUND OVER ALL JOINTS. AS AN ALTERNATE, NOM 3/32 IN. THICK VENEER PLASTER MAY BE APPLIED TO THE ENTIRE SURFACE OF GYPHUM BOARD.

C1 ELEVATOR SHAFT CEILING

1 1/2" = 1'-0"



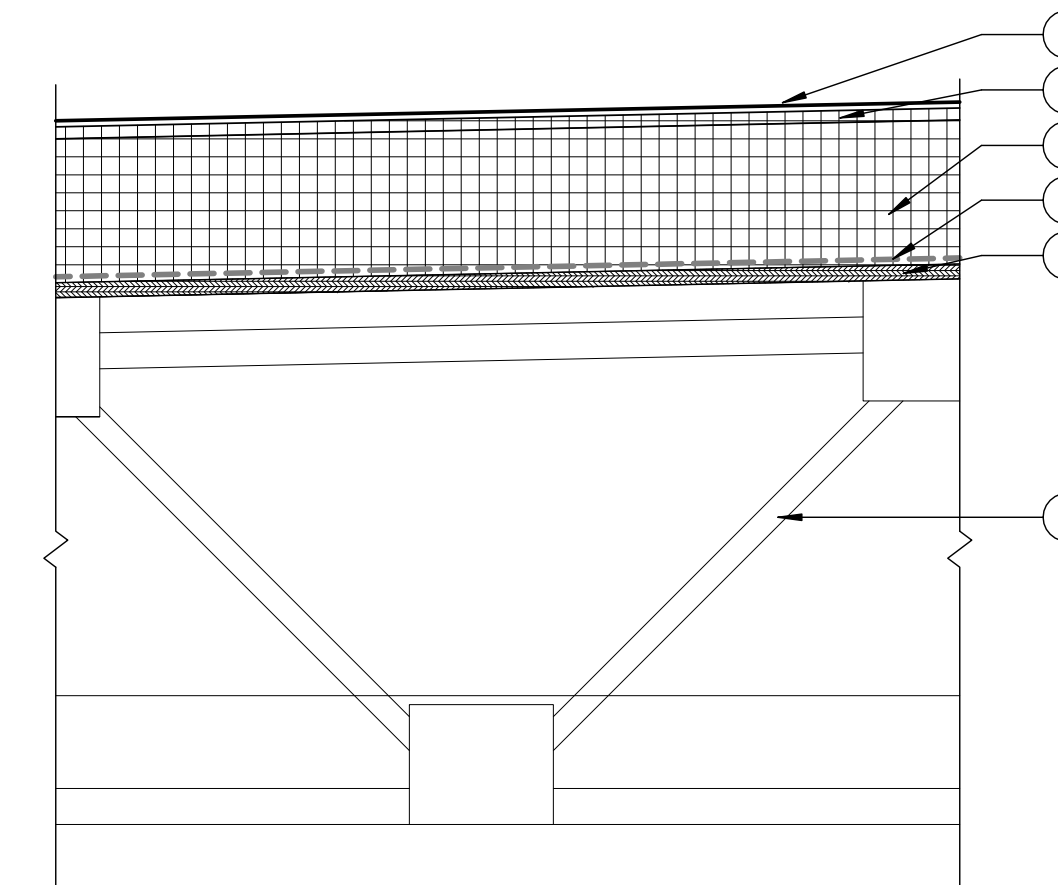
FLOOR SYSTEM - SLAB ON GRADE

FLOOR SYSTEM - SLAB ON GRADE

- FINISH FLOOR** - NOT SHOWN, SEE FINISH SCHEDULE.
- CONCRETE SLAB** - SEE STRUCTURAL FOR STRENGTH, THICKNESS AND REINFORCEMENT SPECIFICATIONS
- VAPOR BARRIER** - FULLY TAPED POLYOLEFIN VAPOR BARRIER (15-MIL) BY STEGO INDUSTRIES LLC OR SIM.
- 8" SAND BED**
- COMPACTED STRUCTURAL-FILL** COMPACTED TO 95% OF DRY DENSITY - SEE STRUCTURALS FOR DEPTH AND GRADATION

F1 SLAB ON GRADE

1 1/2" = 1'-0"

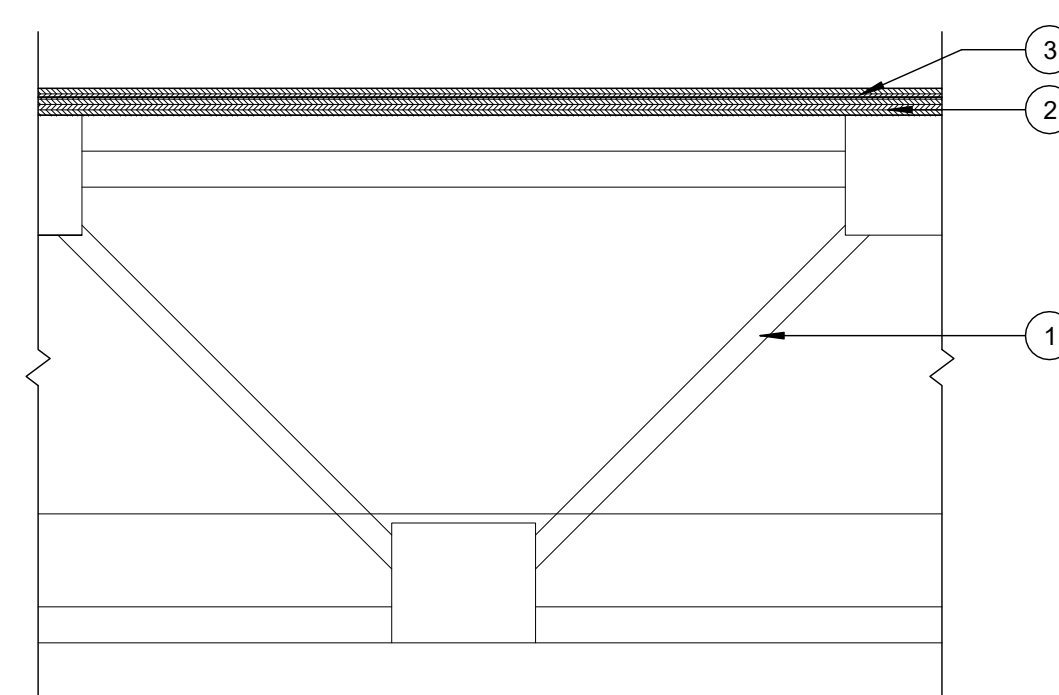


UNRATED ROOF ASSEMBLY

- ROOF JOISTS** - OPEN WEB WOOD TRUSS (SEE STRUCTURAL FOR SIZE AND SPACING)
- PROTECTION BOARD** - 1/2" HIGH DENSITY RIGID INSULATION
- RIGID POLYISOCYANURATE INSULATION** - R-40 MIN
- ROOF SHEATHING** - 5/8" T&G SHEATHING ATTACH TO STRUCTURE WITH 1 1/4" HOT DIPPED MECHANICAL FASTENERS 16" O.C.
- ROOFING** - EPDM MEMBRANE ROOFING
- VAPOR BARRIER** - FULLY TAPED 6 MIL POLY VAPOR BARRIER

R1 TYPICAL FLAT ROOF

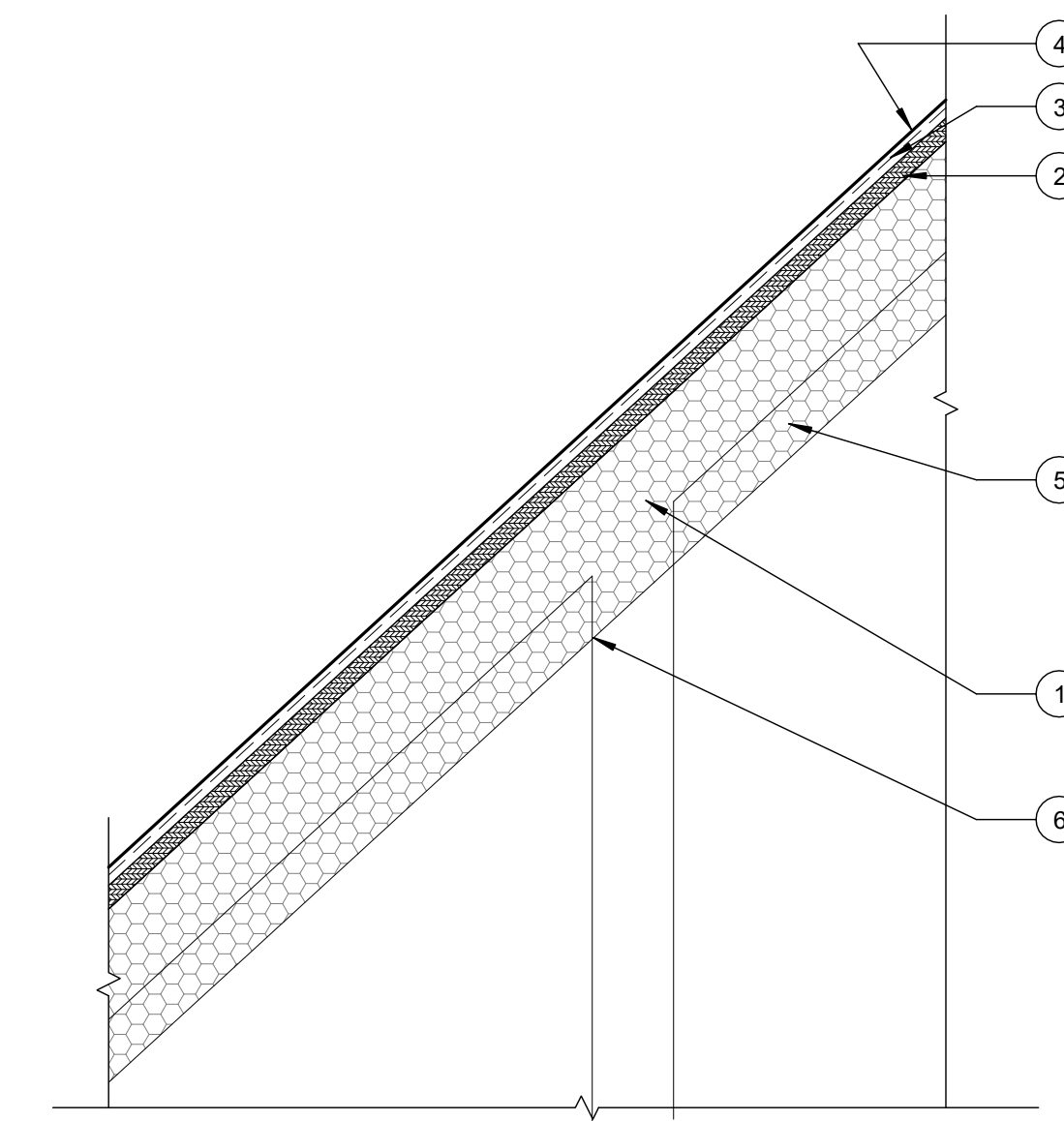
1 1/2" = 1'-0"



- TRUSSES** - PARALLEL CHORD TRUSSES (SEE STRUCTURALS).
- SUBFLOORING** - 3/4 IN. THICK WOOD STRUCTURAL PANELS INSTALLED PERPENDICULAR TO TRUSSES WITH END JOINTS STAGGERED. PLYWOOD OR PANELS SECURED TO TRUSSES WITH CONSTRUCTION ADHESIVE AND NO. 6D RINGED SHANK NAILS, SPACED 12 IN. OC ALONG EACH TRUSS. STAPLES HAVING EQUAL OR GREATER WITHDRAWAL AND LATERAL RESISTANCE STRENGTH MAY BE SUBSTITUTED FOR THE 6D NAILS.
- FINISH FLOOR UNDERLAYMENT** - 3/8" SANDED & PLUGGED CDX PLYWOOD ORIENTED PERPENDICULAR TO SUBFLOORING.

F2 WOOD TRUSS FLOOR

1 1/2" = 1'-0"



UNRATED ROOF ASSEMBLY

- ROOF TRUSS** - ENGINEERED OPEN WEB WOOD TRUSS, (SEE STRUCTURAL)
- ROOF SHEATHING** - 5/8" T&G SHEATHING. ATTACH TO STRUCTURE WITH 1 1/4" HOT DIPPED MECHANICAL FASTENERS 16" O.C.
- ROOFING MEMBRANE** - 15 LB ASPHALT FELT PAPER
- STANDING SEAM METAL ROOFING** - REFERENCE SPECIFICATIONS
- INSULATION** - CLOSED CELL SPRAY FOAM INSULATION TO R-38 MIN.
- INTUMESCENT PAINT** - OVER SURFACE OF INSULATION

R2 TYPICAL SLOPED ROOF

1 1/2" = 1'-0"