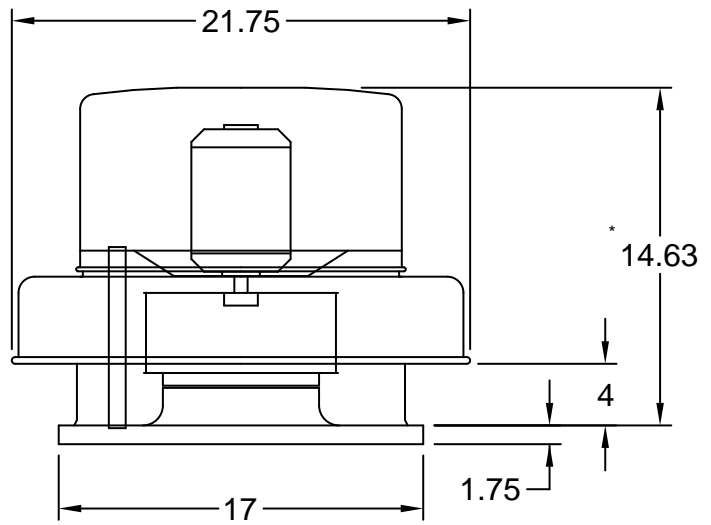


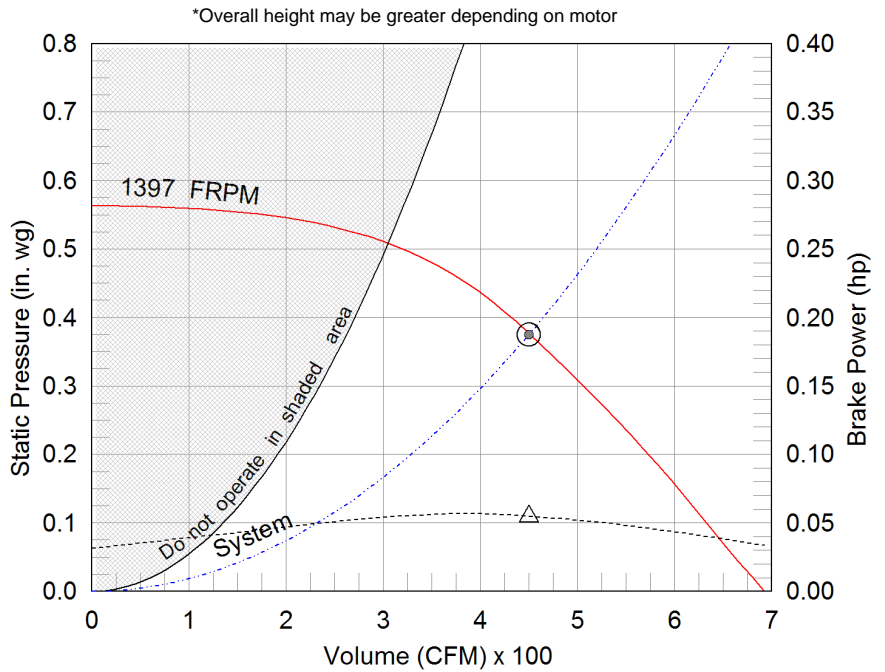
Model: G-090-D
Direct Drive Centrifugal Roof Exhaust Fan



Dimensional	
Quantity	1
Weight w/o Acc's (lb)	23
Weight w/ Acc's (lb)	26
Roof Opening (in.)	12.5 x 12.5

Performance	
Requested Volume (CFM)	450
Actual Volume (CFM)	450
External SP (in. wg)	0.375
Total SP (in. wg)	0.375
Fan RPM	1397
Operating Power (hp)	0.05
Elevation (ft)	62
Airstream Temp.(F)	70
Air Density (lb/ft3)	0.075
Tip Speed (ft/min)	3,979
Static Eff. (%)	49

Motor	
Motor Mounted	Yes
Size (hp)	1/15 (or greater)
Voltage/Cycle/Phase	115/60/1
Enclosure	ODP
Motor RPM	1550
Windings	1



- △ Operating Bhp point
- Operating point at Total SP
- Operating point at External SP
- Fan curve
- - - System curve
- - - Brake horsepower curve

Notes:

All dimensions shown are in units of in.
*Please consult factory for actual motor amp draw
LwA - A weighted sound power level, based on ANSI S1.4
dBA - A weighted sound pressure level, based on 11.5 dB
attenuation per Octave band at 5 ft - dBA levels are not
licensed by AMCA International
Sones - calculated using AMCA 301 at 5 ft

Sound Power by Octave Band

Sound Data	62.5	125	250	500	1000	2000	4000	8000	LwA	dBA	Sones
Inlet	70	70	66	58	55	53	50	43	63	51	6.2



Model: G-090-D

Direct Drive Centrifugal Roof Exhaust Fan

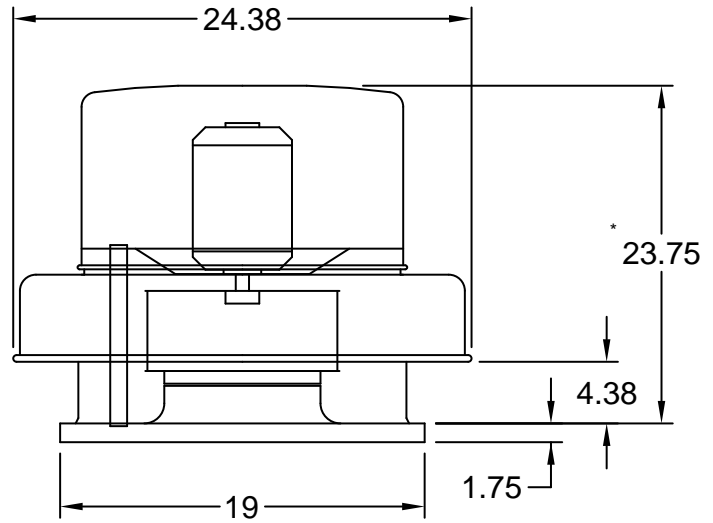
Standard Construction Features:

- Aluminum housing - Backward inclined wheel - Aluminum curb cap with prepunched mounting holes - Birdscreen - Ball bearing motors (sizes 100-180), sleeve bearing motors (sizes 60-95) - Motor isolated on shock mounts - Corrosion resistant fasteners

Selected Options & Accessories:

Motor with Thermal Overload
UL/cUL 705 Listed - "Power Ventilators"
Switch, NEMA-1, Toggle, Shipped with Unit
Junction Box Mounted & Wired
Solid State Speed Control, 6 Amp, Shipped Loose
Unit Warranty: 1 Yr (Standard)

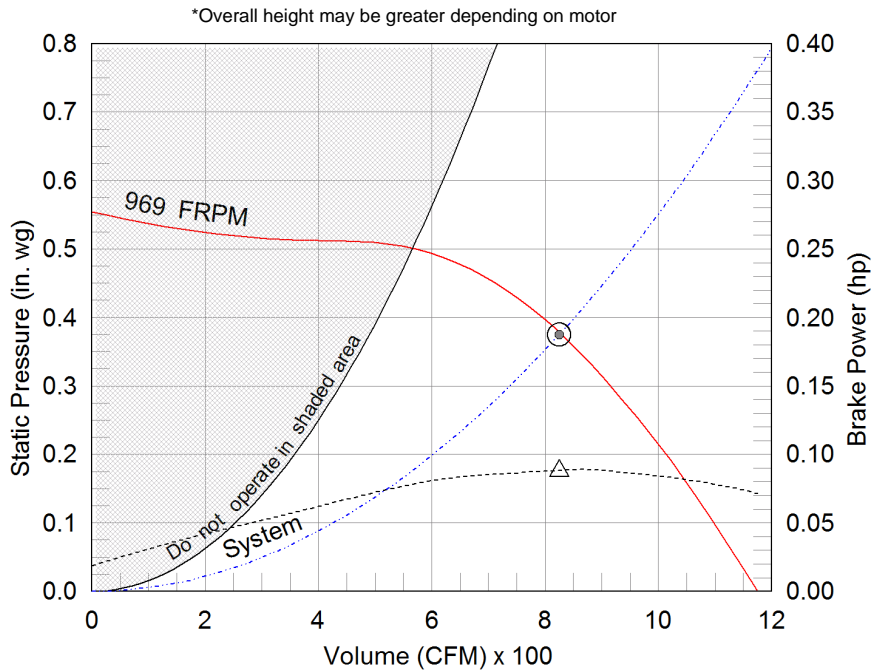
Model: G-123-B
Direct Drive Centrifugal Roof Exhaust Fan



Dimensional	
Quantity	1
Weight w/o Acc's (lb)	50
Weight w/ Acc's (lb)	53
Max T Motor Frame Size	56
Roof Opening (in.)	14.5 x 14.5

Performance	
Requested Volume (CFM)	825
Actual Volume (CFM)	825
External SP (in. wg)	0.375
Total SP (in. wg)	0.375
Fan RPM	969
Operating Power (hp)	0.09
Elevation (ft)	62
Airstream Temp.(F)	70
Air Density (lb/ft3)	0.075
Tip Speed (ft/min)	3,313
Static Eff. (%)	55

Motor	
Motor Mounted	Yes
Size (hp)	1/6
Voltage/Cycle/Phase	115/60/1
Enclosure	ODP
Motor RPM	1140
Windings	1



- △ Operating Bhp point
- Operating point at Total SP
- Operating point at External SP
- Fan curve
- - - System curve
- Brake horsepower curve

Notes:

All dimensions shown are in units of in.
*Please consult factory for actual motor amp draw
LwA - A weighted sound power level, based on ANSI S1.4
dBA - A weighted sound pressure level, based on 11.5 dB
attenuation per Octave band at 5 ft - dBA levels are not
licensed by AMCA International
Sones - calculated using AMCA 301 at 5 ft

Sound Power by Octave Band

Sound Data	62.5	125	250	500	1000	2000	4000	8000	LwA	dBA	Sones
Inlet	65	70	67	60	55	51	46	44	63	52	6.2



Model: G-123-B

Direct Drive Centrifugal Roof Exhaust Fan

Standard Construction Features:

- Aluminum housing - Backward inclined wheel - Aluminum curb cap with prepunched mounting holes - Birdscreen - Ball bearing motors (sizes 100-180), sleeve bearing motors (sizes 60-95) - Motor isolated on shock mounts - Corrosion resistant fasteners

Selected Options & Accessories:

Motor with Thermal Overload
PSC Motor
UL/cUL 705 Listed - "Power Ventilators"
Switch, NEMA-1, Toggle, Shipped with Unit
Junction Box Mounted & Wired
Solid State Speed Control, 6 Amp, Shipped Loose
Unit Warranty: 1 Yr (Standard)