

**AIRTEMP INC.**  
**MECHANICAL CONTRACTORS**  
**20 THOMAS DRIVE**  
**WESTBROOK, MAINE 04092**  
**207-774-2300**  
**207-874-2383 FAX**

**A COMFORT SYSTEMS USA COMPANY**  
**QUALITY PEOPLE – BUILDING SOLUTIONS**

**SUBMITTAL**

**JOB: PORTLAND ELKS CLUB**  
**DATE: 7/14/2017**  
**LOCATION: 1945 CONGRESS STREET**  
**MECHANICAL CONTRACTOR: AIRTEMP INC.**  
**AIRTEMP JOB NUMBER: 896**

\*\*\*\*\*

**AIRTEMP IS PLEASED TO SUBMIT THE FOLLOWING ITEM(S) FOR APPROVAL:**

**FURN-1 AND A/C FOR BAR**  
**FURN-2 FOR NEW STORAGE**

**PLEASE RETURN .PDF OF REVIEWED SUBMITTAL TO US**



## **SUBMITTAL**

**Project**

ELKS LODGE SUBMITTAL

**Date**

Friday, July 14, 2017

# Table Of Contents

Project: ELKS LODGE SUBMITTAL  
Prepared By:

07/14/2017

<b>5-TON SUBMITTAL</b> .....	<b>3</b>
Unit Report.....	4
Performance Summary.....	6
System Parameters.....	6
Electrical Data.....	6
Acoustic Summary.....	7
Certified Drawing.....	8

## **5-TON SUBMITTAL**

Project: ELKS LODGE SUBMITTAL  
Prepared By:

07/14/2017

## **5-TON SUBMITTAL**

**Submittal Cover Sheet  
Unit Report  
Performance Summary Report  
Acoustic Summary  
Certified Drawings**

# Unit Report For 5-TON SUBMITTAL

Project: ELKS LODGE SUBMITTAL  
Prepared By:

07/14/2017



### Outdoor Unit Parameters

Unit Model:.....113A  
Unit Size:.....5 Tons (Size 060)  
Voltage:.....208/230-3-60 V-Ph-Hz

### Indoor Coil Parameters

Unit Model:.....CNPH  
Unit Size:.....5 Tons (Size 60)  
Cabinet Finish:.....Painted  
Cabinet Width:.....24 inch  
Refrigerant Type:.....Puron  
Furnace Family:.....Bryant Non-SEER Enhancing

### Outdoor Unit Dimensions and Weight

Unit Length:.....31.1875 in  
Unit Width:.....31.1875 in  
Unit Height:.....28.6875 in  
Unit Shipping Weight:.....230. lb

### Indoor Coil Dimensions and Weight

Unit Length:.....20.75 in  
Unit Width:.....24.5 in  
Unit Height:.....29 in  
Unit Shipping Weight:.....81. lb

### RESIDENTIAL APPLICATIONS

This warranty is to the original purchasing owner and subsequent owners only to the extent and as stated in the Warranty Conditions and below. The limited warranty period in years, depending on the part and the claimant, is as shown in the table below.

Limited Warranty (Years)		
Item	Original Owner	Subsequent Owner
Parts	10* (or 5)	5
Compressor	10* (or 5)	5

\*If properly registered within 90 days of original installation, otherwise 5 years (except in California and Quebec and other jurisdictions that prohibit warranty benefits conditioned on registration). See Warranty Conditions below.

### OTHER APPLICATIONS

The warranty period is five (5) years on the compressor, and one (1) year on all other parts. The warranty is the original owner only and is not available for subsequent owners.

### Ordering Information

Part Number	Description	Quantity
<b>Outdoor Unit</b>		
113APA060000	Legacy 13 SEER Central Air Conditioner with Puron 5 Tons Cooling 13 SEER @ ARI Conditions	1
<b>Indoor Coil</b>		
CNPHP6024ALA	Cased Horizontal N-Coil Evaporator Coil with Puron Painted 24 inch Aluminum	1
<b>Furnace</b>		
912SC60120S24	912 Legacy +92 Condensing Gas Furnace Up to 2000 Clg CFM on Evap Coil 120,000 Btuh (Size 120)	1

# Unit Report For 5-TON SUBMITTAL

Project: ELKS LODGE SUBMITTAL  
Prepared By:

07/14/2017

Single Stage

The Product and Ratings Data in this program is subject to change at any time and without notice. Please refer to the latest product literature and the AHRI directory at [www.ahridirectory.org](http://www.ahridirectory.org) for the most up-to-date information.



## Furnace Parameters and Dimensions and Weight

Furnace:.....**Non-SEER Enhancing Furnace**  
Furnace Model:.....**91**  
Furnace Efficiency:.....**+92 AFUE**  
Ctg Size Airflow:**Up to 2000 Ctg CFM on Evap Coil**  
Htg Capacity Size:.....**120,000 Btuh (Size 120)**  
Unit Length:.....**29.50** in  
Unit Width:.....**24.50** in  
Unit Height:.....**35.00** in  
Unit Shipping Weight:.....**184.** lb

The Product and Ratings Data in this program is subject to change at any time and without notice. Please refer to the latest product literature and the AHRI directory at [www.ahridirectory.org](http://www.ahridirectory.org) for the most up-to-date information.

# Performance Summary For 5-TON SUBMITTAL

Project: ELKS LODGE SUBMITTAL  
Prepared By:

07/14/2017

## System Performance

<b>System:</b> .....	<b>113A/CNPH</b>	Actual Clg Airflow:.....	<b>1750.0</b>	CFM
System Quantity:.....	<b>1</b>	Standard Clg Airflow:.....	<b>1750.0</b>	CFM
Altitude:.....	<b>0.0</b> ft	Total Net Clg Capacity:.....	<b>56.93</b>	MBH
Furnace Type:.....	<b>Bryant Non-SEER Enhancing</b>	Net Sensible Clg Capacity:.....	<b>40.32</b>	MBH
Linear Pipe Length:.....	<b>0.0</b> ft	Total System Power:.....	<b>5.18</b>	kW
SEER @ ARI Conditions:.....	<b>13.0</b>			
EER @ ARI Conditions:.....	<b>11.0</b>			

## System Parameters

### Outdoor Unit Parameters

Unit Model:..... **113APA060000**  
Unit Size (Nominal):..... **5 Tons (Size 060)**  
Voltage:..... **208/230-3-60** V-Ph-Hz  
Clg Ent Air DB Ambient:..... **95.0** °F

### Indoor Coil Parameters

Unit Model:..... **CNPHP6024ALA**  
Unit Size (Nominal):..... **5 Tons (Size 60)**  
Ent Air DB:..... **80.00** °F  
Ent Air WB:..... **67.00** °F  
Ent Enthalpy:..... **31.44** BTU/lb  
Lvg Air DB:..... **58.67** °F  
Lvg Air WB:..... **56.71** °F  
Lvg Enthalpy:..... **24.21** BTU/lb  
Total External Static:..... **0.50** in wg

### Furnace Ratings

Furnace:..... **912SC60120S24**  
Furnace Efficiency:..... **+92 AFUE**  
Input Max Heat:..... **120,000** BTU/hr  
Output Max Heat:..... **112,000** BTU/hr

### Furnace Performance

Certified Temp High Rise Range:..... **45-75** F

**The customer must ensure the specified airflow and static pressure are within furnace capabilities.**

## Electrical Data

### Outdoor Electrical Data

Unit Voltage:..... **208/230-3-60** V-Ph-Hz  
Fan Motor FLA:..... **1.40** Amps  
MCA:..... **21.4** Amps  
Max Fuse:..... **30** Amps  
Operating Range Min:..... **197** V  
Operating Range Max:..... **253** V  
Compressor RLA:..... **16.0** Amps  
Compressor LRA:..... **110.0** Amps

### Furnace Electrical Data

Unit Voltage:..... **115-1-60** V-Ph-Hz  
Unit MCA:..... **11.9** Amps  
Unit MOCP:..... **20** Amps

The Product and Ratings Data in this program is subject to change at any time and without notice. Please refer to the latest product literature and the AHRI directory at [www.ahridirectory.org](http://www.ahridirectory.org) for the most up-to-date information.

# Acoustic Summary For 5-TON SUBMITTAL

Project: ELKS LODGE SUBMITTAL  
Prepared By:

07/14/2017

## Outdoor Unit Parameters:

Unit Model: .....113A  
Unit Size: .....5 Tons (Size 060)  
Variations: .....Standard

Octave Band Center Frequency, Hz	125	250	500	1k	2k	4k	8k	dBA
Sound Power,dB	59.0	67.5	71.5	73.5	69.0	66.0	63.5	
A-Weighted Sound Power, dBA								78.0

## Indoor Coil Parameters:

Unit Model: .....CNPH  
Unit Size: .....5 Tons (Size 60)  
Cabinet Finish: .....Painted  
Cabinet Width: .....24 inch

No Indoor sound data available.

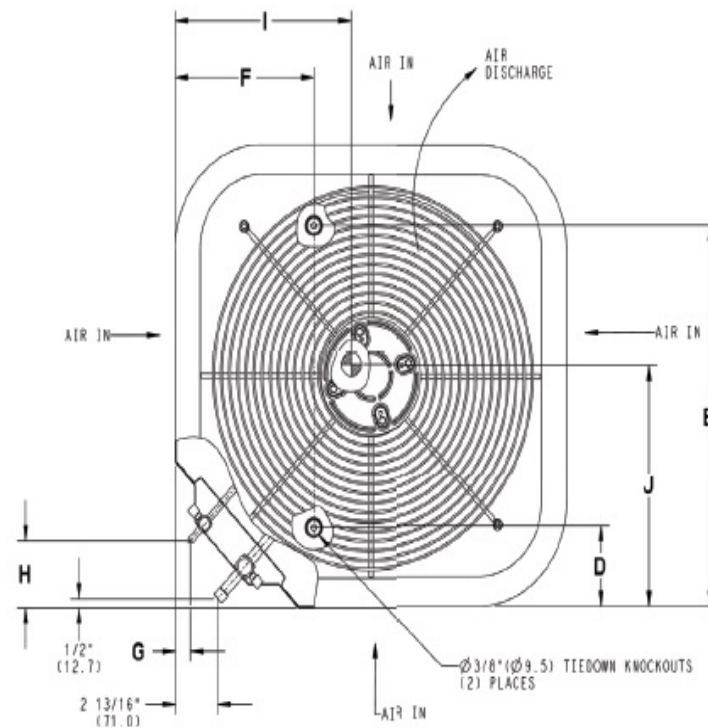
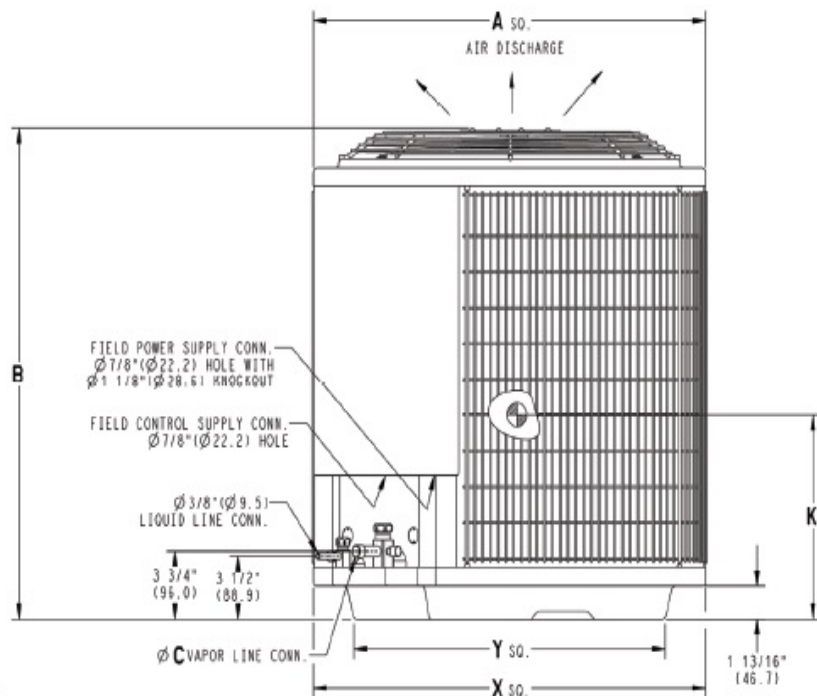
The Product and Ratings Data in this program is subject to change at any time and without notice. Please refer to the latest product literature and the AHRI directory at [www.ahridirectory.org](http://www.ahridirectory.org) for the most up-to-date information.



# Certified Drawing for 5-TON SUBMITTAL

Project: ELKS LODGE SUBMITTAL  
Prepared By:

07/14/2017



**Outdoor Model**

Unit Model:.....**113A**  
 Unit Size:.....**5 Tons (Size 060)**  
 Voltage:.....**208/230-3-60** V-Ph-Hz  
 SEER:.....**13**  
 PartNumber:.....**113APA060000**

Shipping Dimensions and Weights	Outdoor Unit
Height	33.19 in
Width	33.31 in
Length	33.31 in
Operating Weight	198. lb
Shipping Weight	230. lb

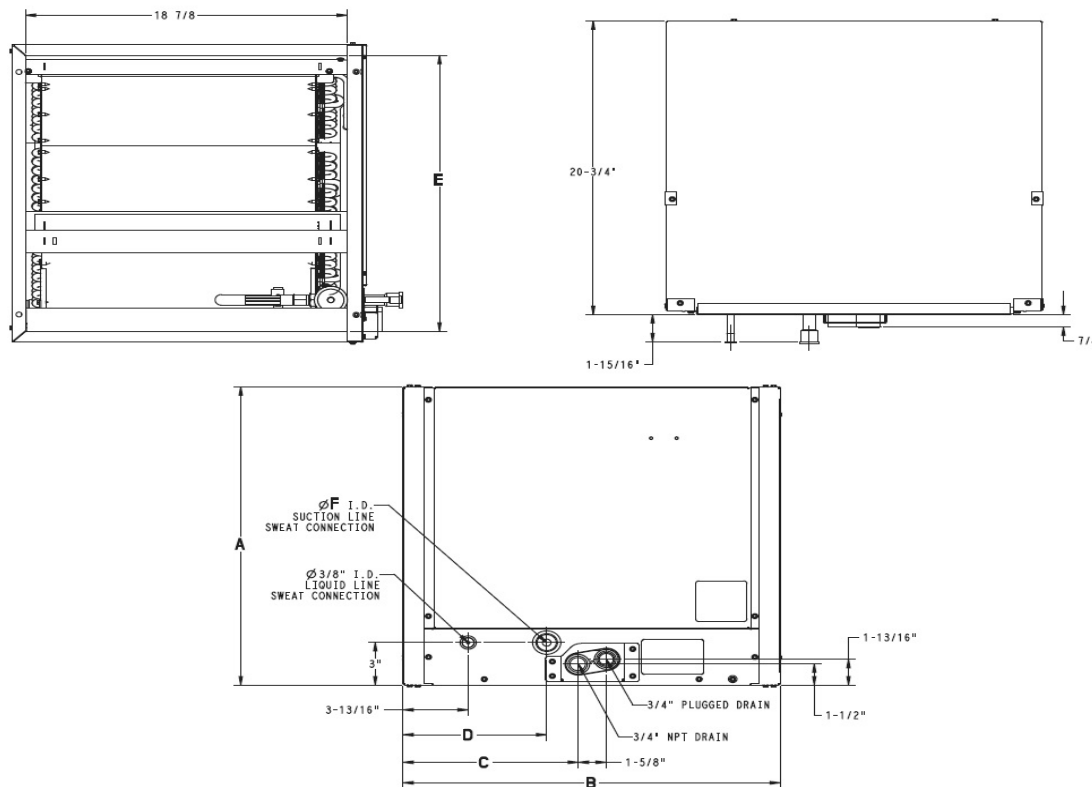
Dimensions											
A	B	C	D	E	F	G	H	I	J	K	
31.19 in	28.69 in	0.88 in	6.56 in	24.69 in	9.13 in	0.31 in	3.00 in	16.00 in	15.50 in	12.75 in	

The Product and Ratings Data in this program is subject to change at any time and without notice. Please refer to the latest product literature and the AHRI directory at [www.ahridirectory.org](http://www.ahridirectory.org) for the most up-to-date information.

# Certified Drawing for 5-TON SUBMITTAL

Project: ELKS LODGE SUBMITTAL  
Prepared By:

07/14/2017



**Indoor Coil**

Unit Model:.....**CNPH**  
 Unit Size:.....**5 Tons (Size 60)**  
 Cabinet Finish:.....**Painted**  
 Cabinet Width:.....**24 inch**  
 PartNumber:.....**CNPHP6024ALA**

Dimensions and Weights	Indoor Coil
Height	27.50 in
Width	17.56 in
Length	20.75 in
Shipping Weight	81. lb

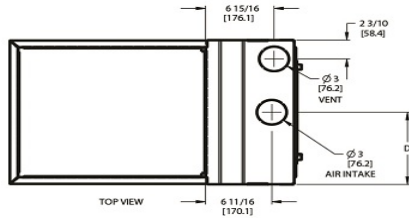
Dimensions					
A	B	C	D	E	F
24.50 in	29.00 in	14.13 in	9.31 in	23.00 in	0.88 in

The Product and Ratings Data in this program is subject to change at any time and without notice. Please refer to the latest product literature and the AHRI directory at [www.ahridirectory.org](http://www.ahridirectory.org) for the most up-to-date information.

# Certified Drawing for 5-TON SUBMITTAL

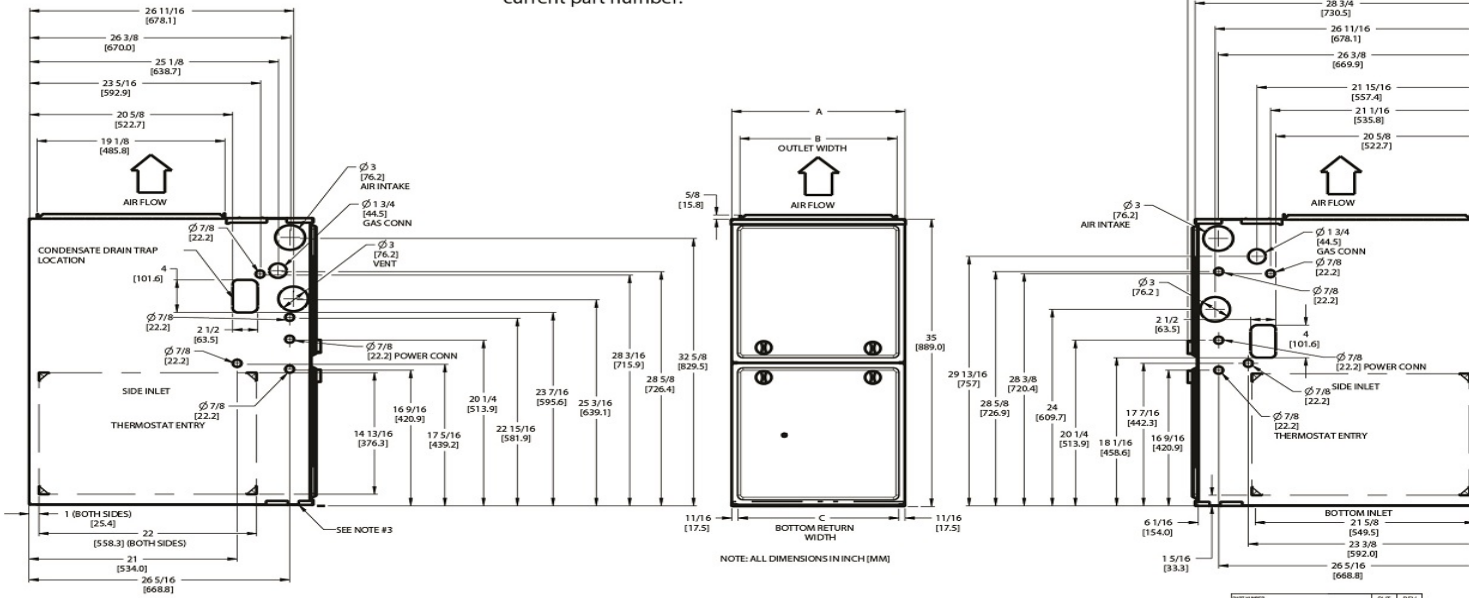
Project: ELKS LODGE SUBMITTAL  
Prepared By:

07/14/2017



**NOTES:**

1. Doors may vary by model.
2. Minimum return-air openings at furnace, based on metal duct. If flex duct is used, see flex duct manufacturer's recommendations for equivalent diameters.
  - a. For 800 CFM-16-in. (406 mm) round or 14 1/2 x 12-in. (368 x 305 mm) rectangle.
  - b. For 1200 CFM-20-in. (508 mm) round or 14 1/2 x 19 1/2-in. (368 x 495 mm) rectangle.
  - c. For 1600 CFM-22-in. (559 mm) round or 14 1/2 x 22 1/16-in. (368 x 560mm) rectangle.
  - d. Return air above 1800 CFM at 0.5 in. w.c. ESP on 24.5" casing, requires one of the following configurations: 2 sides, 1 side and a bottom or bottom only. See Air Delivery table in this document for specific use to allow for sufficient airflow to the furnace.
3. Vent and Combustion air pipes through blower compartment must use accessory "Vent Kit - Through the Cabinet". See accessory list for current part number.



DIMENSIONAL DRAWING

REV	1	E
DATE		
SD5024-4		

Furnace Model:.....**91**  
 Furnace Efficiency:.....**+92 AFUE**  
 Cig Size Airflow:**Up to 2000 Cig CFM on Evap Coil**

Htg Capacity Size:.....**120,000 Btuh (Size 120)**  
 PartNumber:.....**912SC60120S24**

Dimensions				
A	B	C	D	Shipping Wgt
24.50 in	22.88 in	23.00 in	12.25 in	184.00 in

The Product and Ratings Data in this program is subject to change at any time and without notice. Please refer to the latest product literature and the AHRI directory at [www.ahrirectory.org](http://www.ahrirectory.org) for the most up-to-date information.