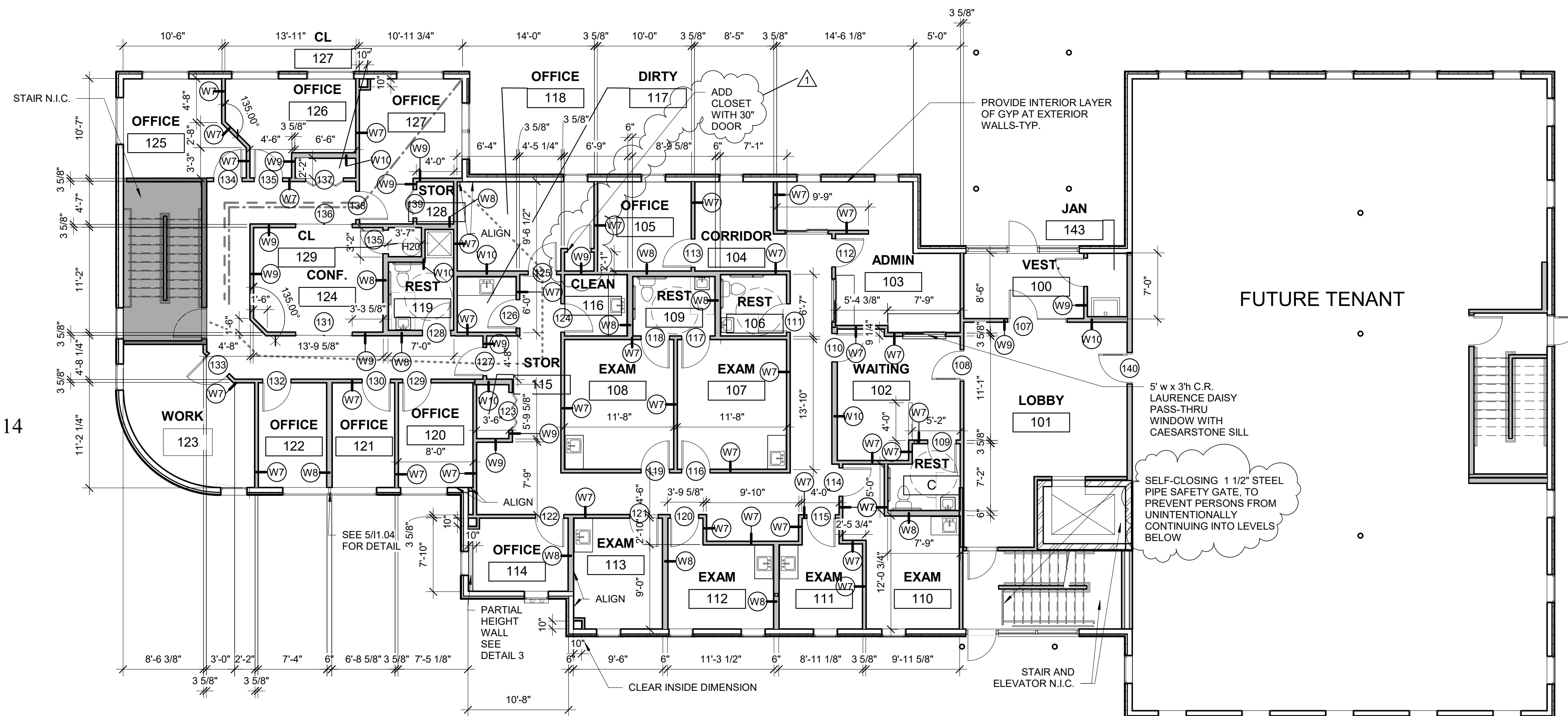
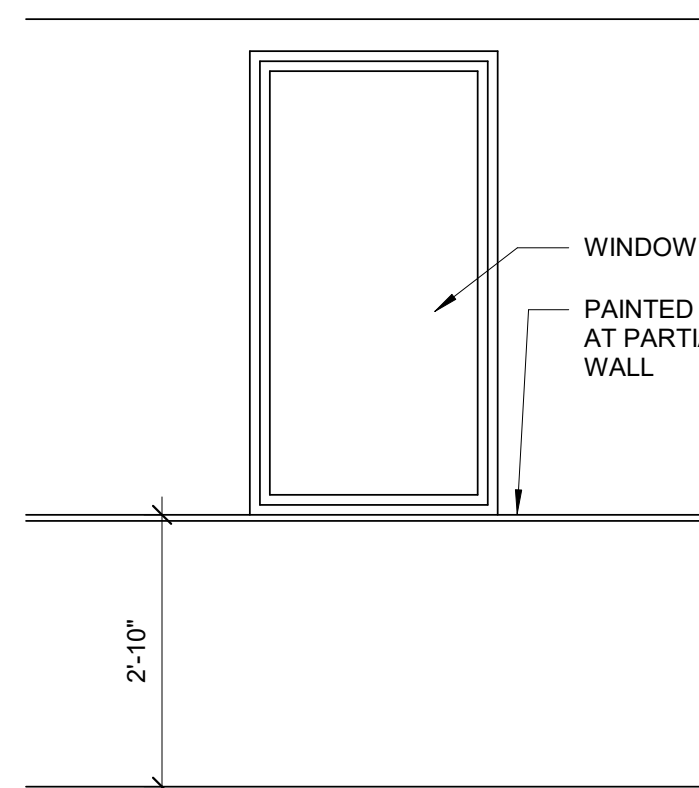
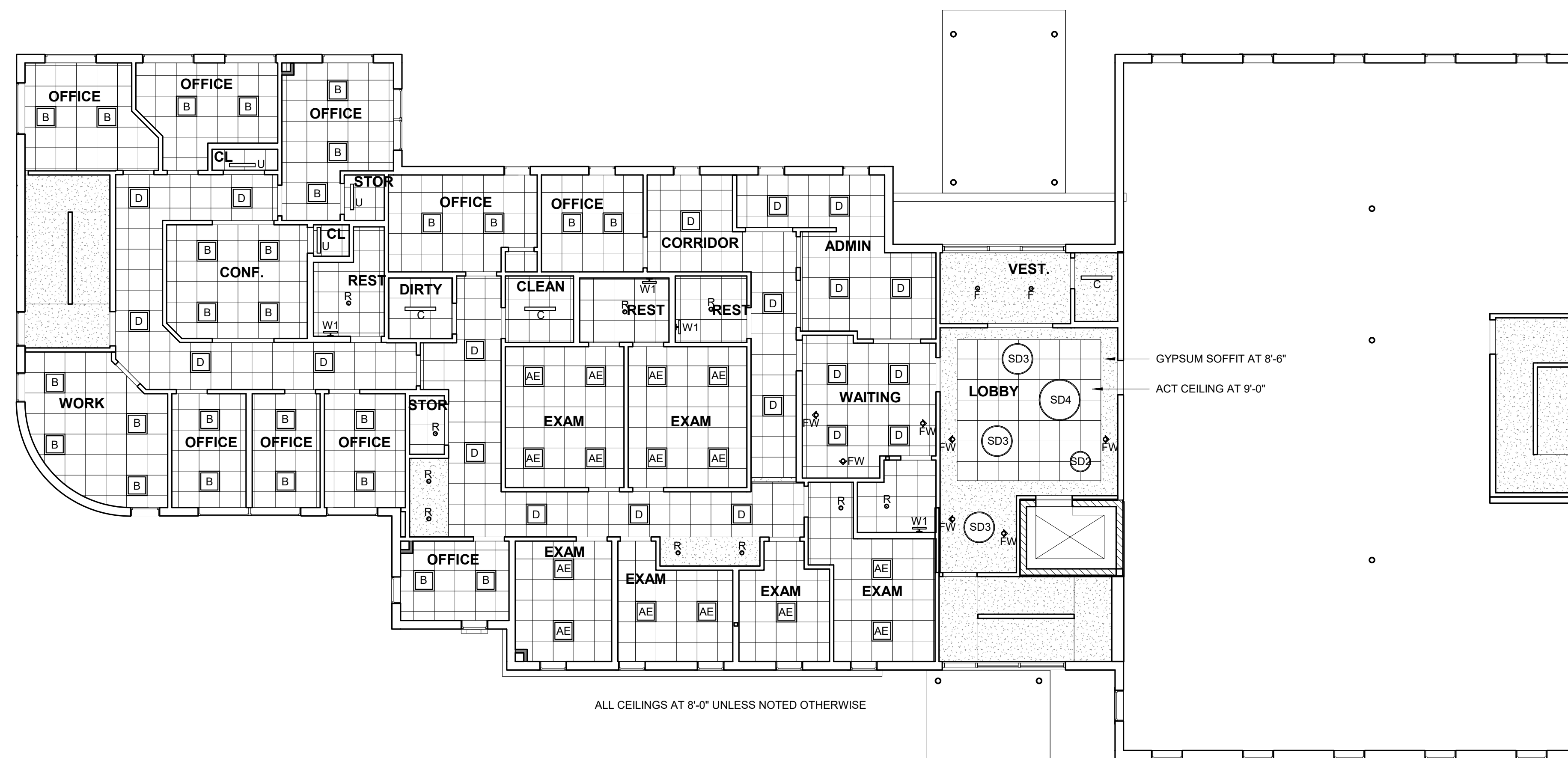


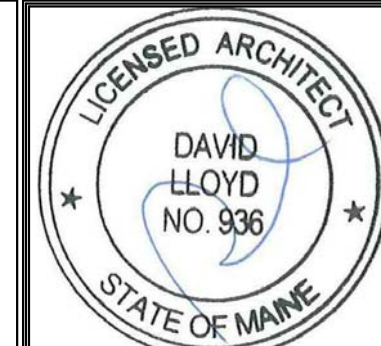
3 PARTIAL HEIGHT WALL OFFICE 114
1/2" = 1'-0"



1 1ST FLOOR - FIT OUT
1/8" = 1'-0"

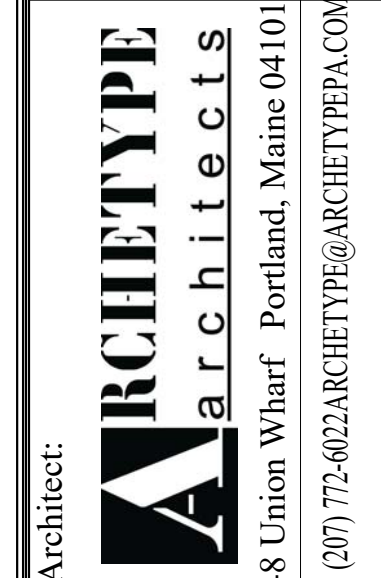


2 1ST FLOOR CEILING PLAN
1/8" = 1'-0"



Prepared For:
Diversified Partners LLC

Consultant:



Project:
MEDICAL OFFICES
1945 CONGRESS STREET,
PORTLAND, MAINE

Revisions:
1 8/11/17 TI REVISION

Scale:
As indicated
FIRST FLOOR FIT OUT

Date:
9/12/2017

I1.01