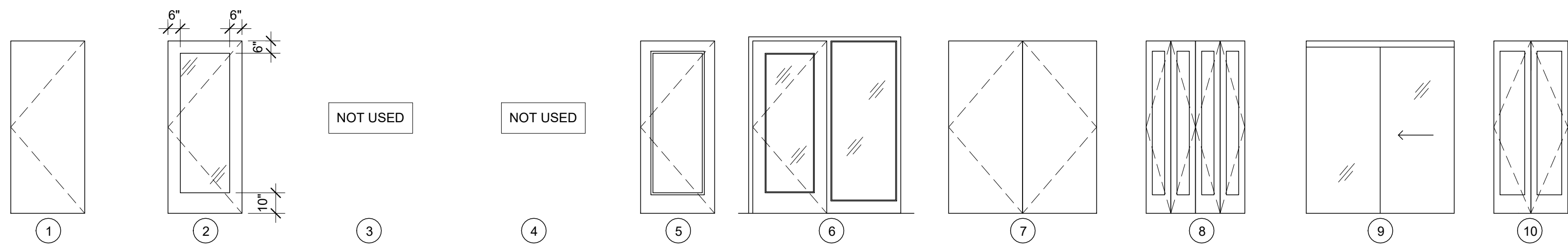
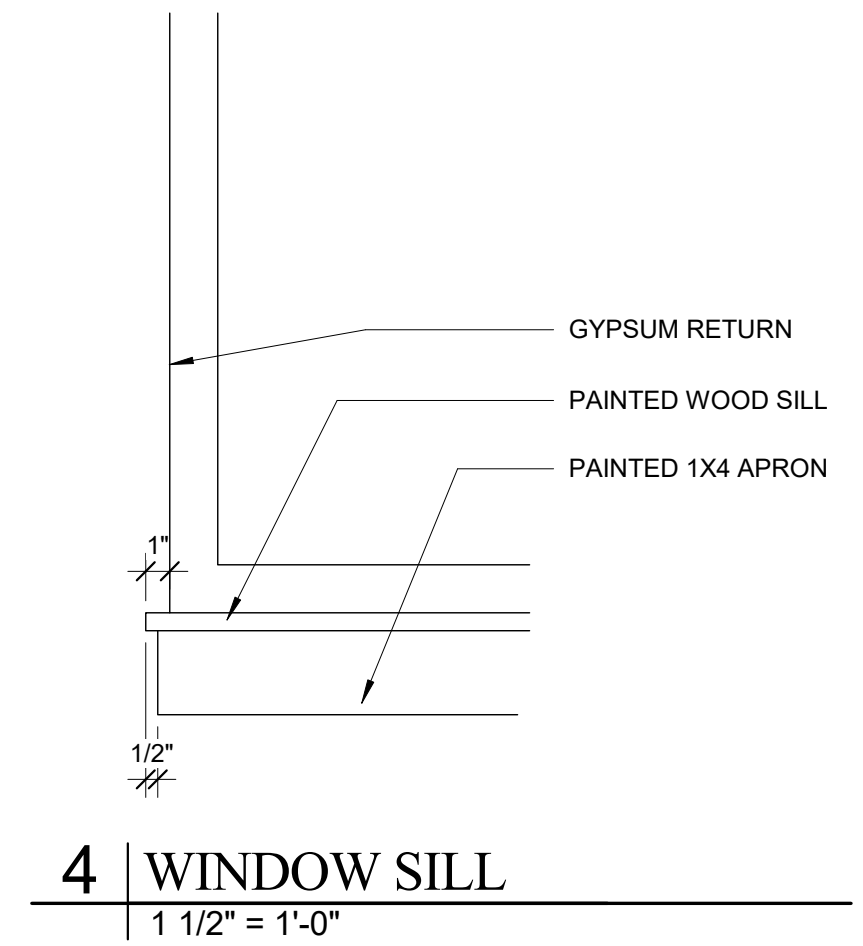


## DOOR SCHEDULE - FIT OUT

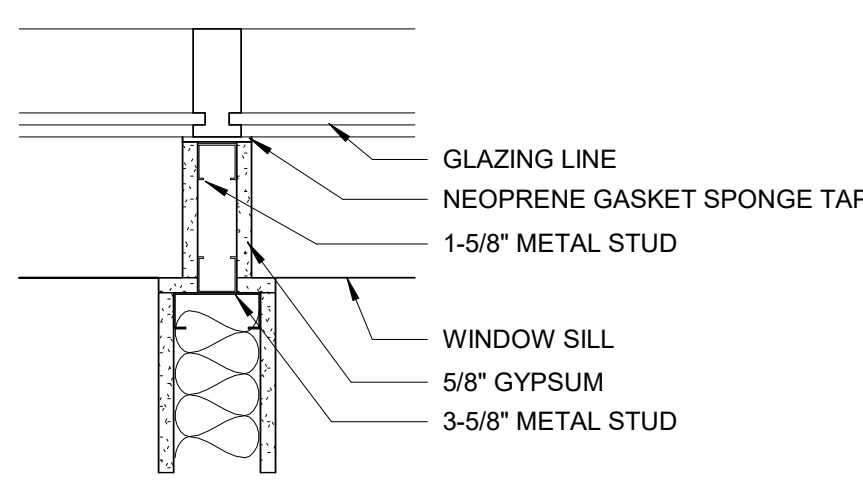
DOOR No.	LOCATION	DOOR			TYPE	MATL	FINISH	FRAME			OPER.	CL.	REMARKS
		W	H	THCK				JAMB	THRESH. OLD	FINISH			
008	BREAK ROOM	3'-0"	7'-0"	1 3/4"	5	SCM	PTD	WOOD			PASSAGE		NO THRESHOLDS UNLESS OTHERWISE NOTED. ONLY UNDERCUT DOORS 1/4"
009	STORAGE	6'-0"	7'-0"	1 3/4"	7	METAL	PTD	HM			STOR		
010	FUTURE TENANT	3'-0"	7'-0"	1 3/4"	5	SCM	PTD	WOOD			KEYPAD		
011	REST	3'-0"	7'-0"	1 3/4"	5	SCM	PTD	WOOD			PRIVACY		
012	REST	3'-0"	7'-0"	1 3/4"	5	SCM	PTD	WOOD			PRIVACY		
013	LAUNDRY	3'-0"	7'-0"	1 3/4"	1	METAL	PTD	HM			PASSAGE		
014	IT	3'-0"	7'-0"	1 3/4"	1	METAL	PTD	HM			STOR		
105		3'-0"	7'-0"	1 3/4"	3	HM	PTD	HM	ALUM	PTD	PASS	60 MIN	Yes
106		3'-0"	7'-0"	1 3/4"	2	AL		AL	ALUM		EXIT		Yes
107	LOBBY	6'-0"	7'-0"	1 3/4"	6	AL		AL	ALUM		KEYPAD		USE FRAME TYPE A
108	WAITING	3'-0"	7'-0"	1 3/4"	2	SCM/GLASS	PTD	WOOD			KEYPAD		
109	REST	3'-0"	7'-0"	1 3/4"	5	SCM	PTD	WOOD			PRIVACY		
110	WAITING	3'-0"	7'-0"	1 3/4"	5	SCM	PTD	WOOD			PASSAGE		
111	REST	3'-0"	7'-0"	1 3/4"	5	SCM	PTD	WOOD			PRIVACY		
112	ADMIN	3'-0"	7'-0"	1 3/4"	5	SCM	PTD	WOOD			PASSAGE		
113	OFFICE	3'-0"	7'-0"	1 3/4"	5	SCM	PTD	WOOD			OFFICE		
114	EXAM	3'-0"	7'-0"	1 3/4"	5	SCM	PTD	WOOD			PASSAGE		
115	EXAM	3'-0"	7'-0"	1 3/4"	5	SCM	PTD	WOOD			PASSAGE		
116	EXAM	3'-0"	7'-0"	1 3/4"	5	SCM	PTD	WOOD			PASSAGE		
117	REST	3'-0"	7'-0"	1 3/4"	5	SCM	PTD	WOOD			PRIVACY		
118	REST	3'-0"	7'-0"	1 3/4"	5	SCM	PTD	WOOD			PRIVACY		
119	EXAM	3'-0"	7'-0"	1 3/4"	5	SCM	PTD	WOOD			PASSAGE		
120	EXAM	3'-0"	7'-0"	1 3/4"	5	SCM	PTD	WOOD			PASSAGE		
121	EXAM	3'-0"	7'-0"	1 3/4"	5	SCM	PTD	WOOD			PASSAGE		
122	OFFICE	3'-0"	7'-0"	1 3/4"	5	SCM	PTD	WOOD			OFFICE		
123	STOR	4'-0"	7'-0"	1 3/8"	8	SCM	PTD	WOOD			STOR		
124	CLEAN	3'-0"	7'-0"	1 3/4"	5	SCM	PTD	WOOD			PASSAGE		
125	OFFICE	3'-0"	7'-0"	1 3/4"	5	SCM	PTD	WOOD			PASSAGE		
126	DIRTY	3'-0"	7'-0"	1 3/4"	5	SCM	PTD	WOOD			PASSAGE		
127	CORRIDOR	3'-0"	7'-0"	1 3/4"	5	SCM	PTD	WOOD			PASSAGE		
128	REST	3'-0"	7'-0"	1 3/4"	5	SCM	PTD	WOOD			PRIVACY		
129	OFFICE	3'-0"	7'-0"	1 3/4"	5	SCM	PTD	WOOD			OFFICE		
130	OFFICE	3'-0"	7'-0"	1 3/4"	5	SCM	PTD	WOOD			OFFICE		
131	CONF.	6'-0"	7'-0"	1 1/2"	9	GLASS		GYP RETURN			PASSAGE		
132	OFFICE	3'-0"	7'-0"	1 3/4"	5	SCM	PTD	WOOD			OFFICE		
133	WORK	3'-0"	7'-0"	1 3/4"	5	SCM	PTD	WOOD			OFFICE		
134	OFFICE	3'-0"	7'-0"	1 3/4"	5	SCM	PTD	WOOD			OFFICE		
135	OFFICE	3'-0"	7'-0"	1 3/4"	5	SCM	PTD	WOOD			OFFICE		
135	CL	2'-6"	7'-0"	1 3/4"	5	SCM	PTD	WOOD			PASSAGE		
136	CONF.	6'-0"	7'-0"	1 1/2"	9	GLASS		GYP RETURN			PASSAGE		
137	CL	4'-0"	7'-0"	1 3/8"	8	SCM	PTD	WOOD			PASSAGE		
138	OFFICE	3'-0"	7'-0"	1 3/4"	5	SCM	PTD	WOOD			OFFICE		
139	STOR	3'-0"	7'-0"	1 3/8"	10	SCM	PTD	WOOD			PASS		
140	FUTURE TENANT	3'-0"	7'-0"	1 3/4"	2	SCM/GLASS		WOOD			KEYPAD		
201	CORRIDOR	3'-0"	7'-0"	1 3/4"	3	HM	PTD	HM	ALUM	PTD	PASS	60 MIN	Yes
202	STORE / LOBBY	3'-0"	7'-0"	1 3/4"	3	HM	PTD	HM	ALUM	PTD	PASS	60 MIN	Yes
203	STAIR	3'-0"	7'-0"	1 3/4"	3	HM	PTD	HM	ALUM	PTD	PASS	60 MIN	Yes
204	CORRIDOR	3'-0"	6'-8"	1 3/4"	5	SCM/GLASS		WOOD			KEYPAD		
205	NUMB	3'-0"	6'-8"	1 3/4"	5	SCM	PTD	WOOD			PASSAGE		
206	PHOTO	3'-0"	6'-8"	1 3/4"	5	SCM	PTD	WOOD			PASSAGE		
207	EXAM	3'-0"	6'-8"	1 3/4"	5	SCM	PTD	WOOD			PASSAGE		
208	EXAM	3'-0"	6'-8"	1 3/4"	5	SCM	PTD	WOOD			PASSAGE		
209	BODY SCULPT	3'-0"	6'-8"	1 3/4"	5	SCM	PTD	WOOD			PASSAGE		
210	INJECT	3'-0"	6'-8"	1 3/4"	5	SCM	PTD	WOOD			PASSAGE		
211	REST	3'-0"	6'-8"	1 3/4"	5	SCM	PTD	WOOD			PRIVACY		
212	EXAM	3'-0"	6'-8"	1 3/4"	5	SCM	PTD	WOOD			PASSAGE		
213	CORRIDOR	3'-0"	6'-8"	1 3/4"	5	SCM	PTD	WOOD			PASSAGE		
214	PHYS PROV	3'-0"	6'-8"	1 3/4"	5	SCM	PTD	WOOD			OFFICE		
215	CLEAN	3'-0"	6'-8"	1 3/4"	5	SCM	PTD	WOOD			PASSAGE		
216	EXAM	3'-0"	6'-8"	1 3/4"	5	SCM	PTD	WOOD			PASSAGE		
217	OFFICE	3'-0"	6'-8"	1 3/4"	5	SCM	PTD	WOOD			OFFICE		
218	EXAM	3'-0"	6'-8"	1 3/4"	5	SCM	PTD	WOOD			PASSAGE		
219	DIRTY	3'-0"	6'-8"	1 3/4"	5	SCM	PTD	WOOD			PASSAGE		
220	BODY SCULPT	3'-0"	6'-8"	1 3/4"	5	SCM	PTD	WOOD			PASSAGE		
221	REST	3'-0"	6'-8"	1 3/4"	5	SCM	PTD	WOOD			PRIVACY		
222	REST	3'-0"	6'-8"	1 3/4"	5	SCM	PTD	WOOD			PRIVACY		
223	EXAM	3'-0"	6'-8"	1 3/4"	5	SCM	PTD	WOOD			PASSAGE		
224	EXAM	3'-0"	6'-8"	1 3/4"	5	SCM	PTD	WOOD			PASSAGE		
225	EXAM	3'-0"	6'-8"	1 3/4"	5	SCM	PTD	WOOD			PASSAGE		
226	EXAM	3'-0"	6'-8"	1 3/4"	5	SCM	PTD	WOOD			PASSAGE		
227	EXAM	3'-0"	6'-8"	1 3/4"	5	SCM	PTD	WOOD			PASSAGE		
228	PHOTO/ VITALS	3'-0"	6'-8"	1 3/4"	5	SCM	PTD	WOOD			PASSAGE		
229	CHECK OUT	6'-0"	7'-0"	1 1/2"	9	GLASS		GYP RETURN			PASSAGE		
230	CHECK OUT	6'-0"	7'-0"	1 1/2"	9	GLASS		GYP RETURN			PASSAGE		
230	JAN	3'-0"	6'-8"	1 3/4"	2	SCM	PTD	WOOD			KEYPAD		
231	CHECK OUT	6'-0"	7'-0"	1 1/2"	9	GLASS		GYP RETURN			PASSAGE		
232	STORE / LOBBY	3'-0"	7'-0"	1 3/4"	2	SCM/GLASS		WOOD			KEYPAD		
233	CORRIDOR	3'-0"	6'-8"	1 3/4"	5	SCM	PTD	WOOD			PASSAGE		
234	Room	3'-0"	7'-0"	1 3/4"	2	SCM/GLASS		WOOD			KEYPAD		
235	JAN	3'-0"	7'-0"	1 3/4"	5								
236	PUMP	3'-0"	7'-0"	1 3/4"	5								
237		3'-0"	6'-8"	1 3/4"	5								
238		3'-0"	6'-8"	1 3/4"	5								



**1 | LEAF TYPES FIT UP**  
1 1/4" = 1'-0"



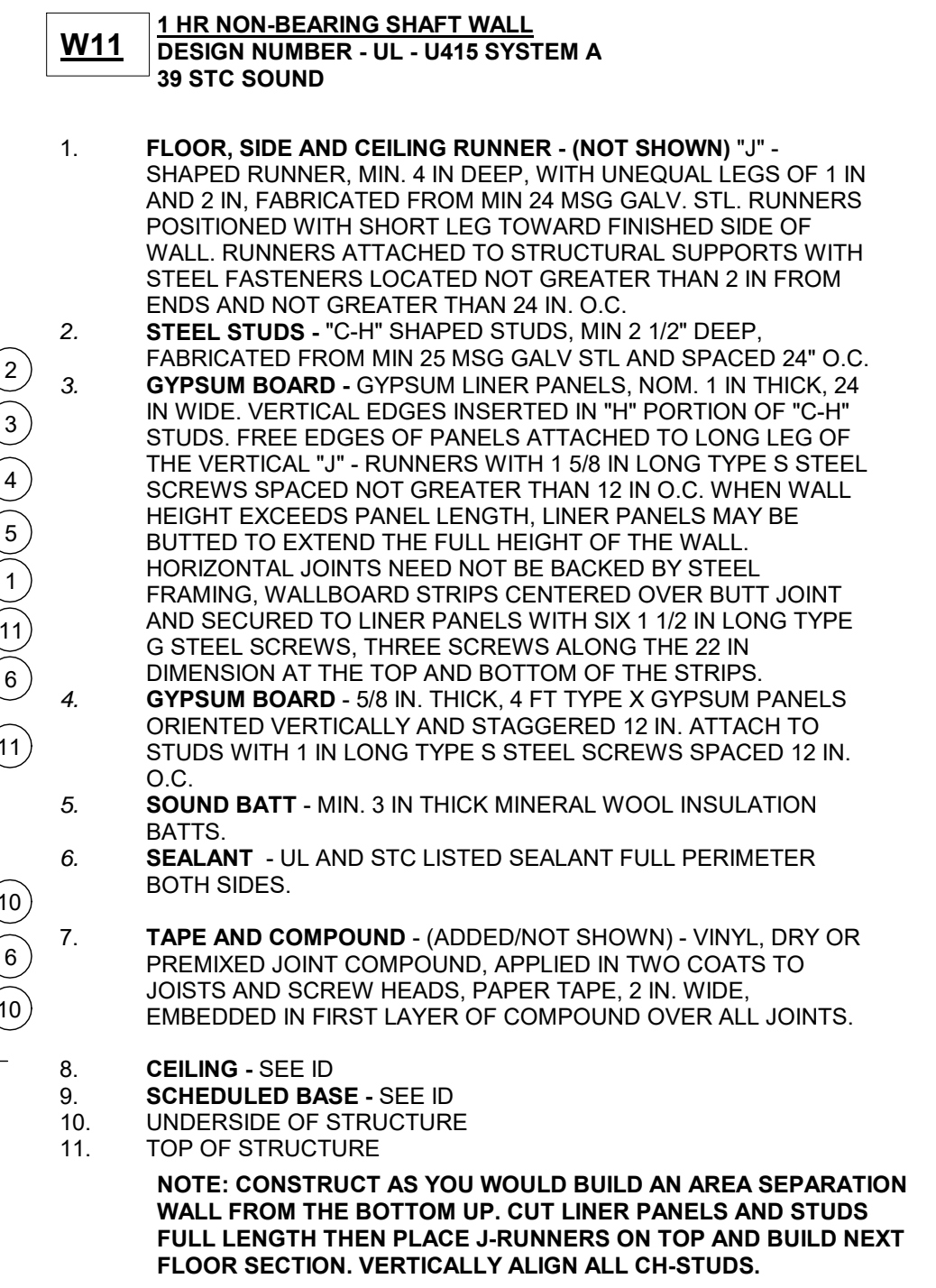
**4 | WINDOW SILL**  
1 1/2" = 1'-0"



**5 | DETAIL AT WALL/WINDOW**  
1 1/2" = 1'-0"

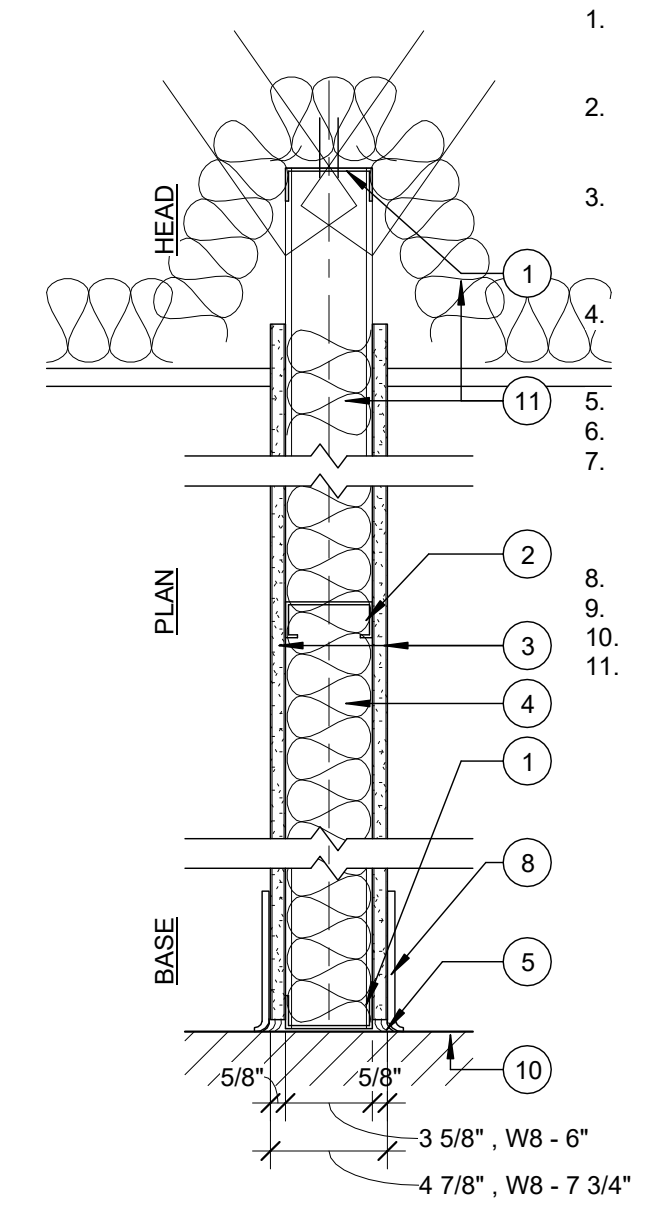


**LABEL 1 HR**



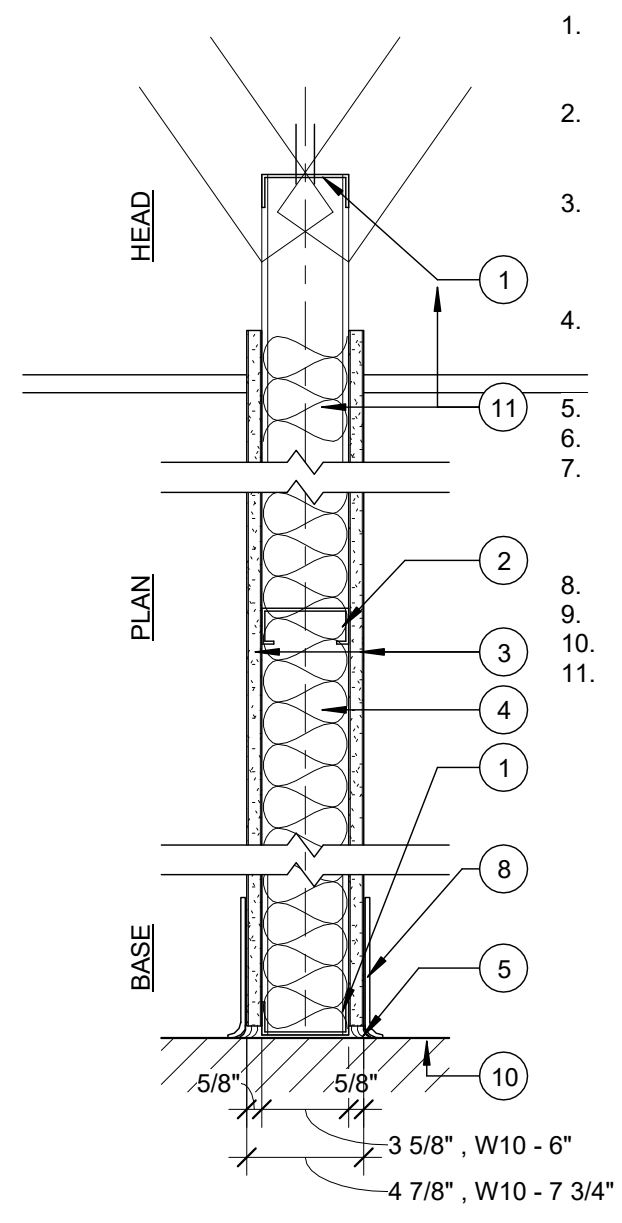
**6 | WALL TYPE 11 - TYP. SHAFT WALL ASSEMBLY**  
1 1/2" = 1'-0"

W7	W8
3 5/8"	6"



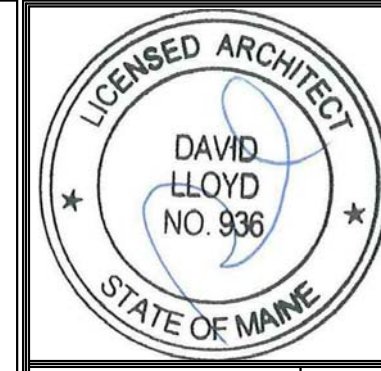
**2 | W7/W8 Metal Stud/Acoustic**  
1 1/2" = 1'-0"

W9	W10
3 5/8"	6"



**3 | W9/W10 Metal Stud**  
1 1/2" = 1'-0"

- NON-RATED NON-BEARING ACOUSTICAL PARTITION**  
DESIGN NUMBER - N/A
- CONT. METAL FLOOR AND CEILING RUNNER - CHANNEL SHAPED 3 5/8" 25 MSG STEEL WITH 1 1/4" LONG LEGS FASTENERS @ 2'-0" O.C. MAX. WITHIN 1" OF ENDS
  - STEEL STUDS - CHANNEL SHAPED 25 MSG STEEL 3 5/8" STUDS SPACED MAX. 24" O.C. RUN TO 2" ABOVE FINISHED CEILING (USE 6" STUD AT W2 WALLS)
  - GYPSUM BOARD - (1) LAYER 5/8" GYP. BD. EACH SIDE TO 12" ABOVE CEILING, PAPER SURFACED, APPLIED PERPENDICULAR TO FRAMING WITH 1" TYPE S STEEL SCREWS SPACED 8" O.C. SEE NOTES FOR GYP. BD. TYPE
  - SOUND ATTENUATION BATT - FIBERGLASS BATT WITH UL CLASS AS TO SURFACE BURNING CHARACTERISTICS AND OR FIRE RESISTANCE REQUIRED
  - SEALANT - ACOUSTIC SEALANT BOTH SIDES.
  - BLOCKING - (NOT SHOWN) WOOD BLOCKING AS NEEDED
  - TAPE AND COMPOUND - (NOT SHOWN) VINYL, DRY OR PREMIXED JOINT COMPOUND, APPLIED IN TWO COATS TO JOISTS AND SCREW HEADS, PAPER TAPE, 2 IN. WIDE, EMBEDDED IN FIRST LAYER OF COMPOUND OVER ALL JOINTS.
  - BASE - SEE FINISH SCHEDULE
  - UNDERSIDE OF STRUCTURE
  - TOP OF STRUCTURE
  - SOUND ATTENUATION BATT - FIBERGLASS BATT WITH UL CLASS AS TO SURFACE BURNING CHARACTERISTICS AND OR FIRE RESISTANCE REQUIRED - RUN BATT OVER TOP OF WALL FOR 3' ON EACH SIDE BETWEEN ADJACENT OFFICES, SOLO, HUDDLE AND CONFERENCE ROOMS



Prepared For:  
**Diversified Partners LLC**

Consultant:  
**ARCHETYPE architects**  
48 Union Wharf Portland, Maine 04101  
(207) 772-0022 ARCHETYPE@ARCHETYPEPA.COM

Project:  
**MEDICAL OFFICES**  
1945 CONGRESS STREET, PORTLAND MAINE

Revisions:

Date: June 13, 2017  
Scale: As indicated  
**DOOR SCHEDULE/ WALL TYPES**