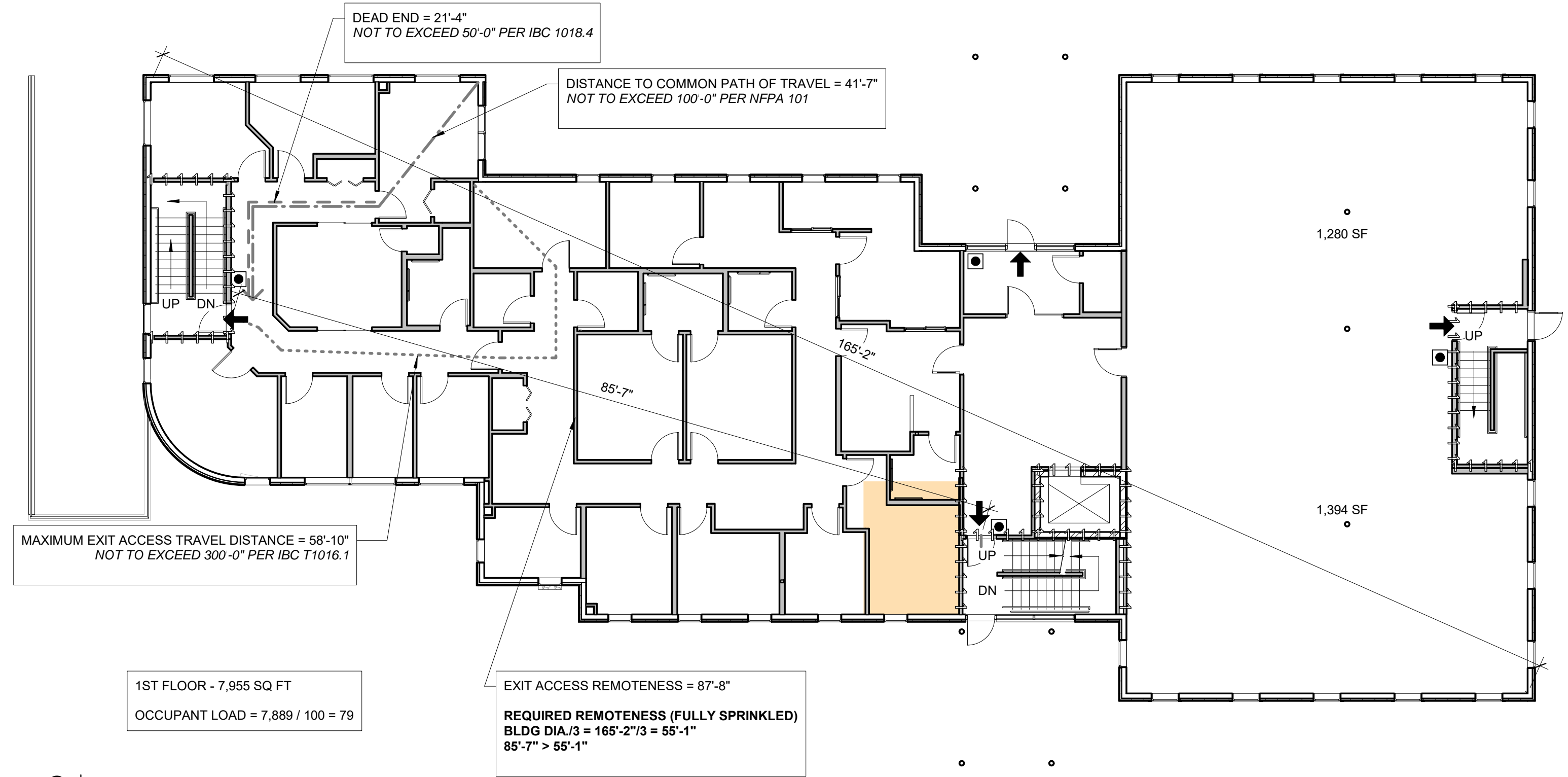


NEW WALL - 1 HOUR	
FIRE EXTINGUISHER	
MAXIMUM TRAVEL DISTANCE TO AN EXIT	
COMMON PATH OF TRAVEL LENGTH	
EXIT ENTRANCE	

NOTE: REFERENCE ELECTRICAL PLANS FOR LIFE SAFETY DEVICE LOCATIONS

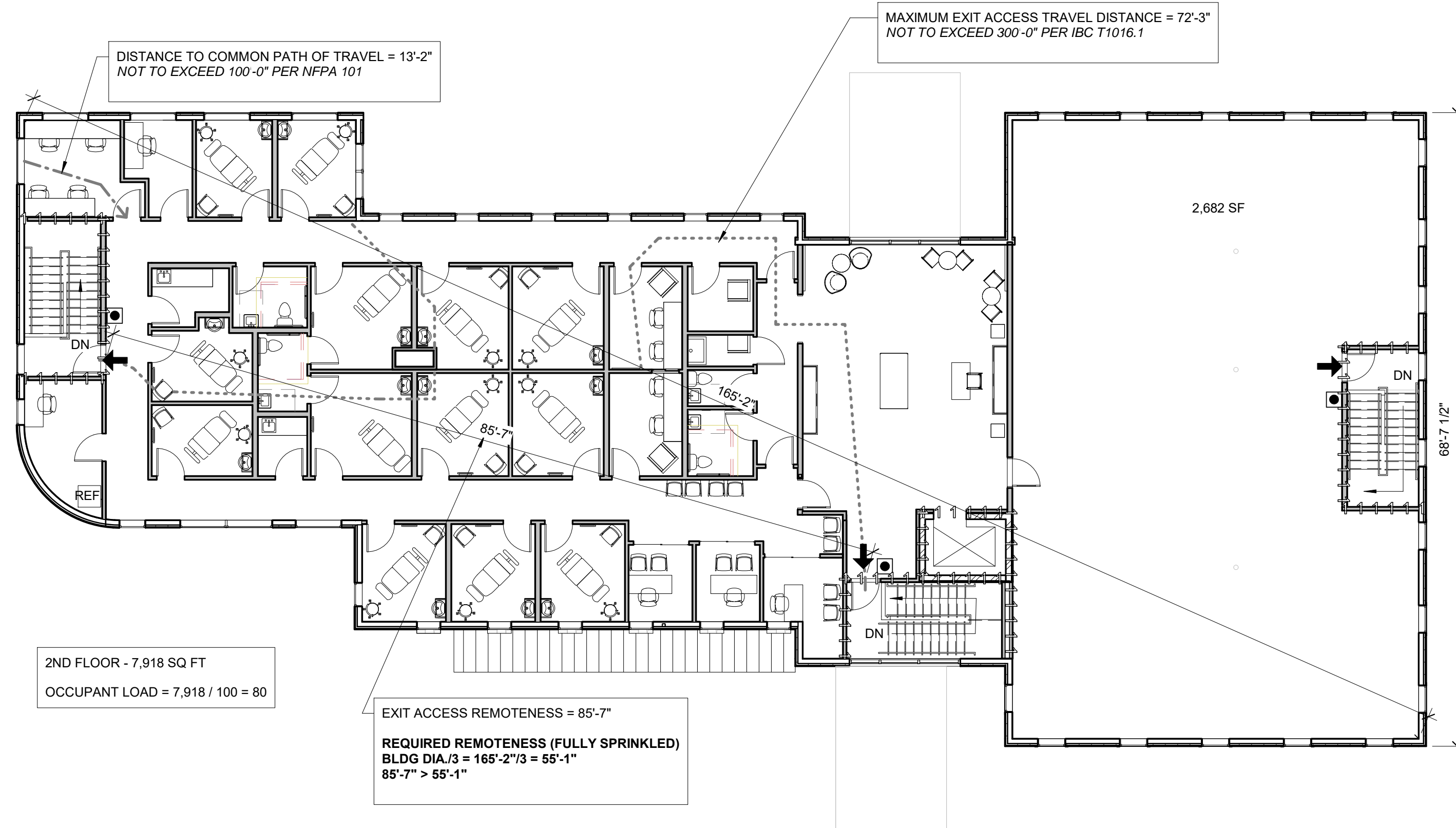
**LIFE SAFETY LEGEND**

1/8" = 1'-0"



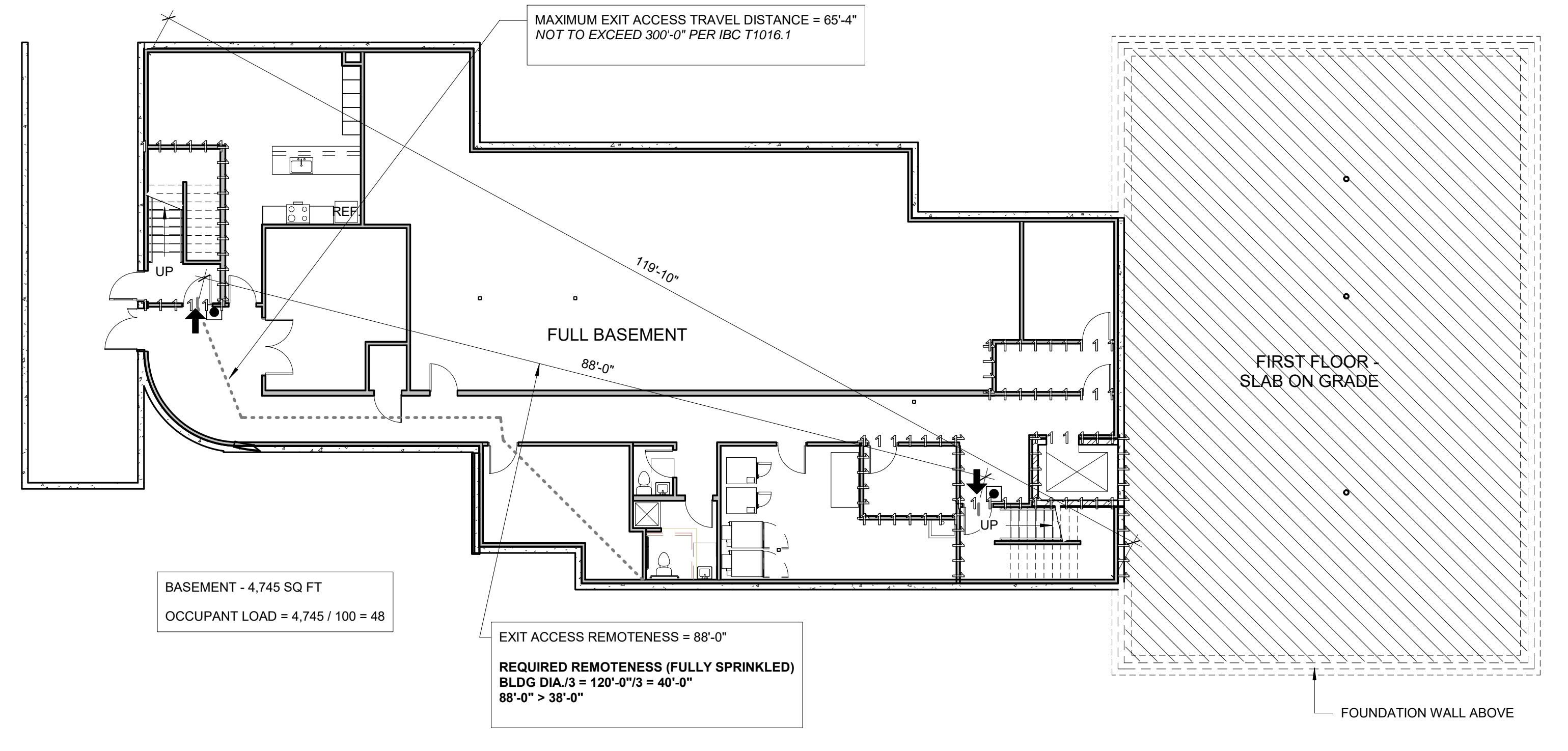
**2 | 1ST FLOOR - LIFE SAFETY**

3/32" = 1'-0"



**3 | 2ND FLOOR - LIFE SAFETY**

3/32" = 1'-0"



**1 | BASEMENT - LIFE SAFETY**

3/32" = 1'-0"