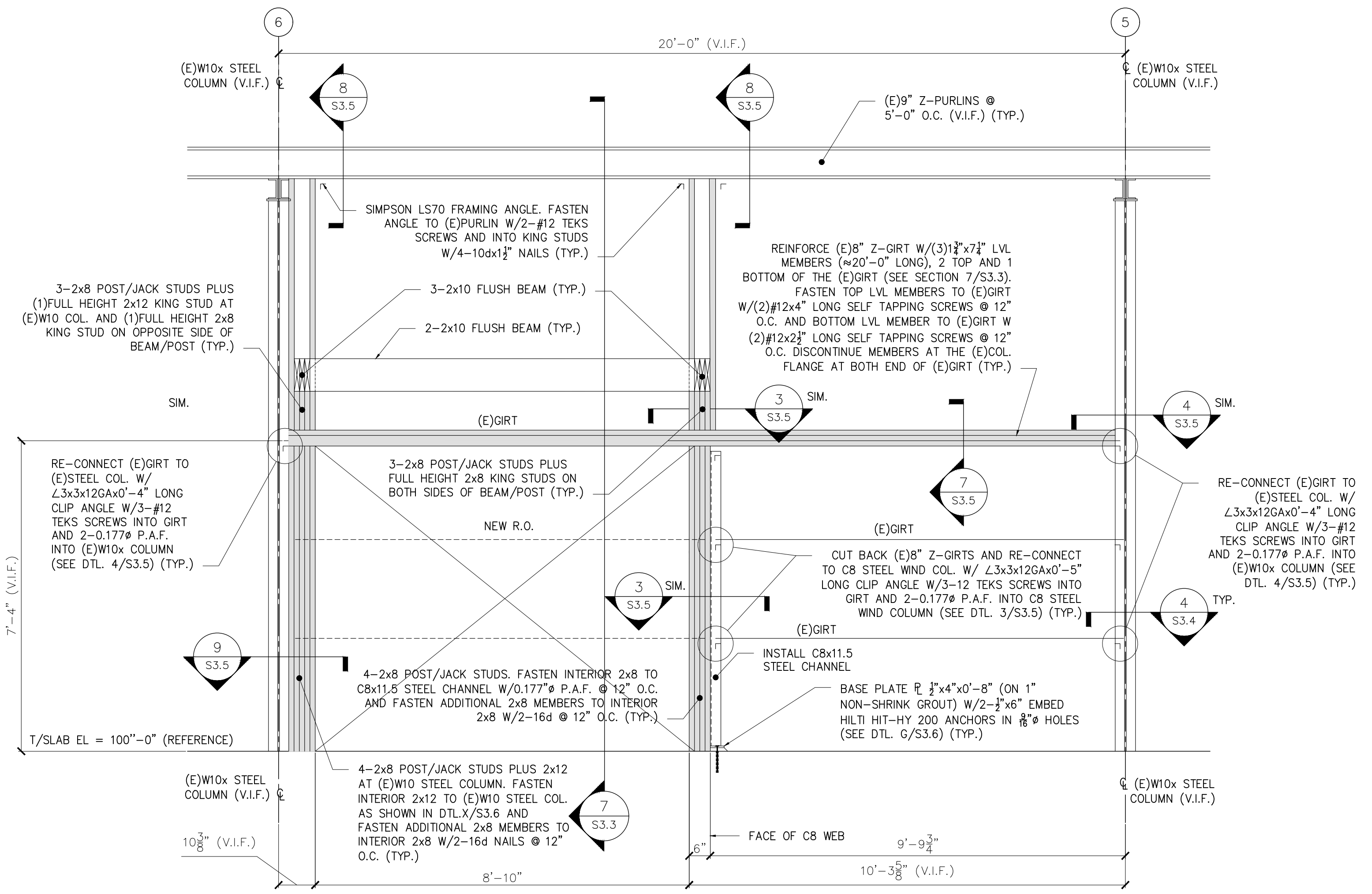
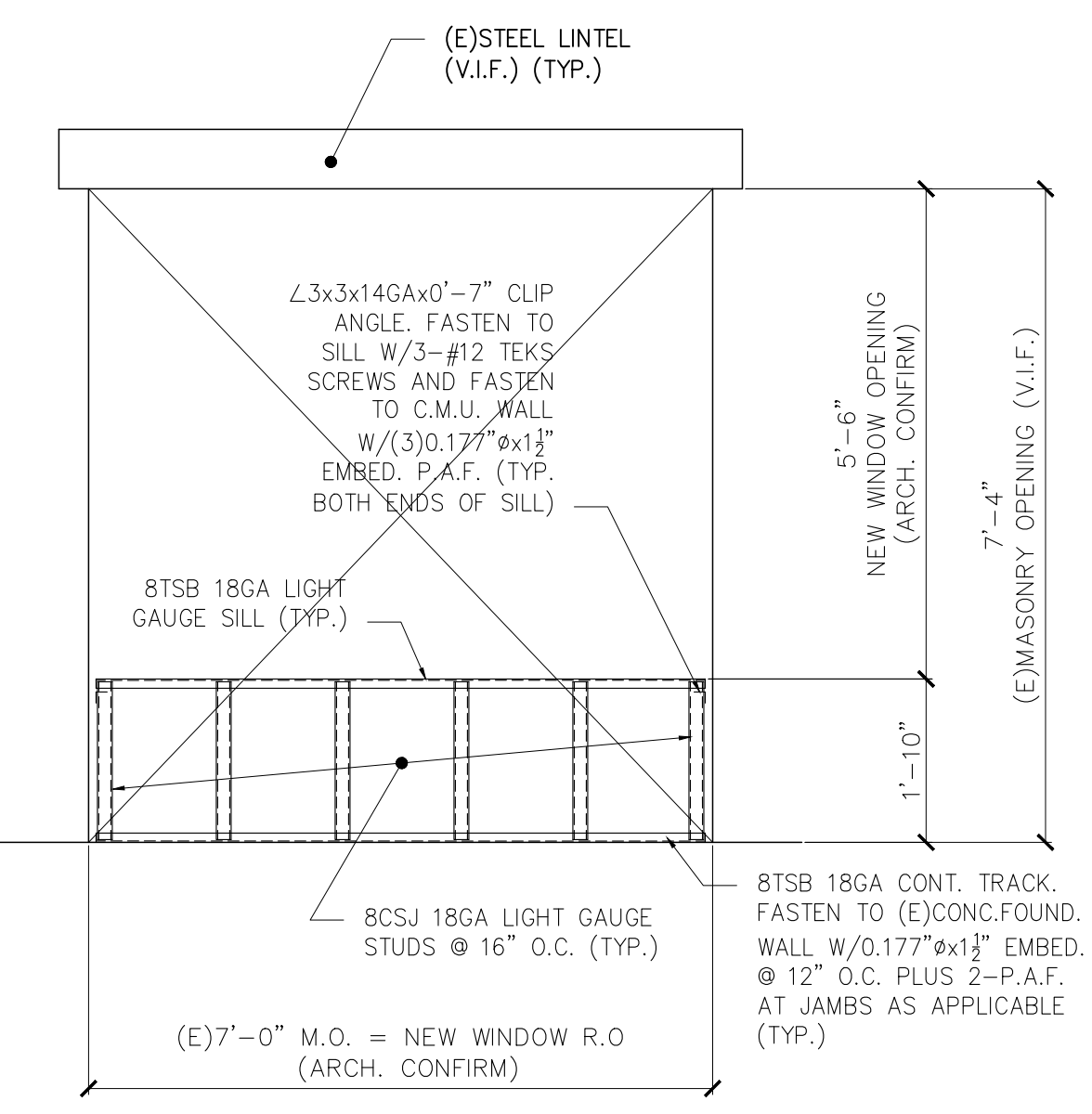


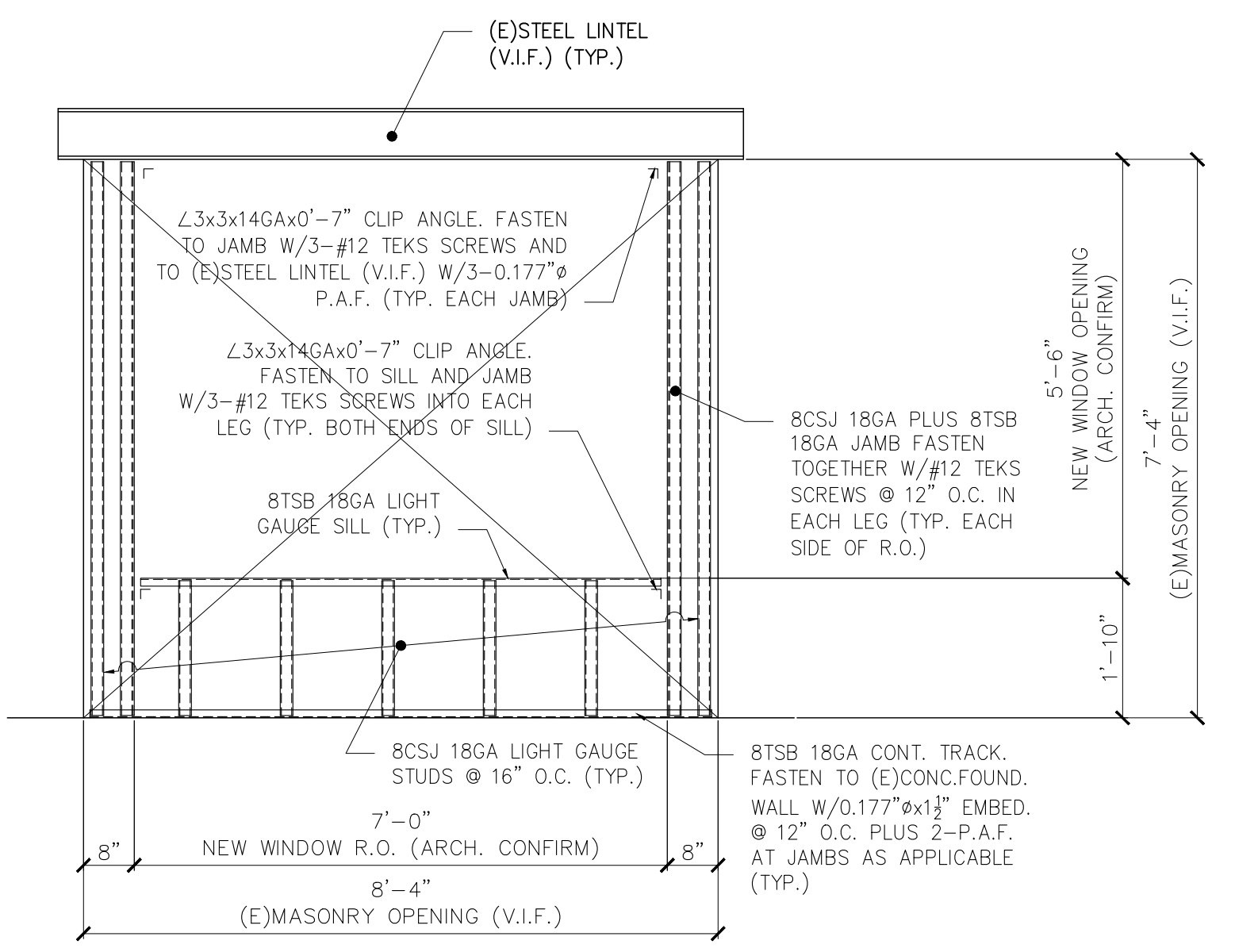
**DETAIL A** (WEST ENTRY CANOPY)  
1/2" = 1'-0"



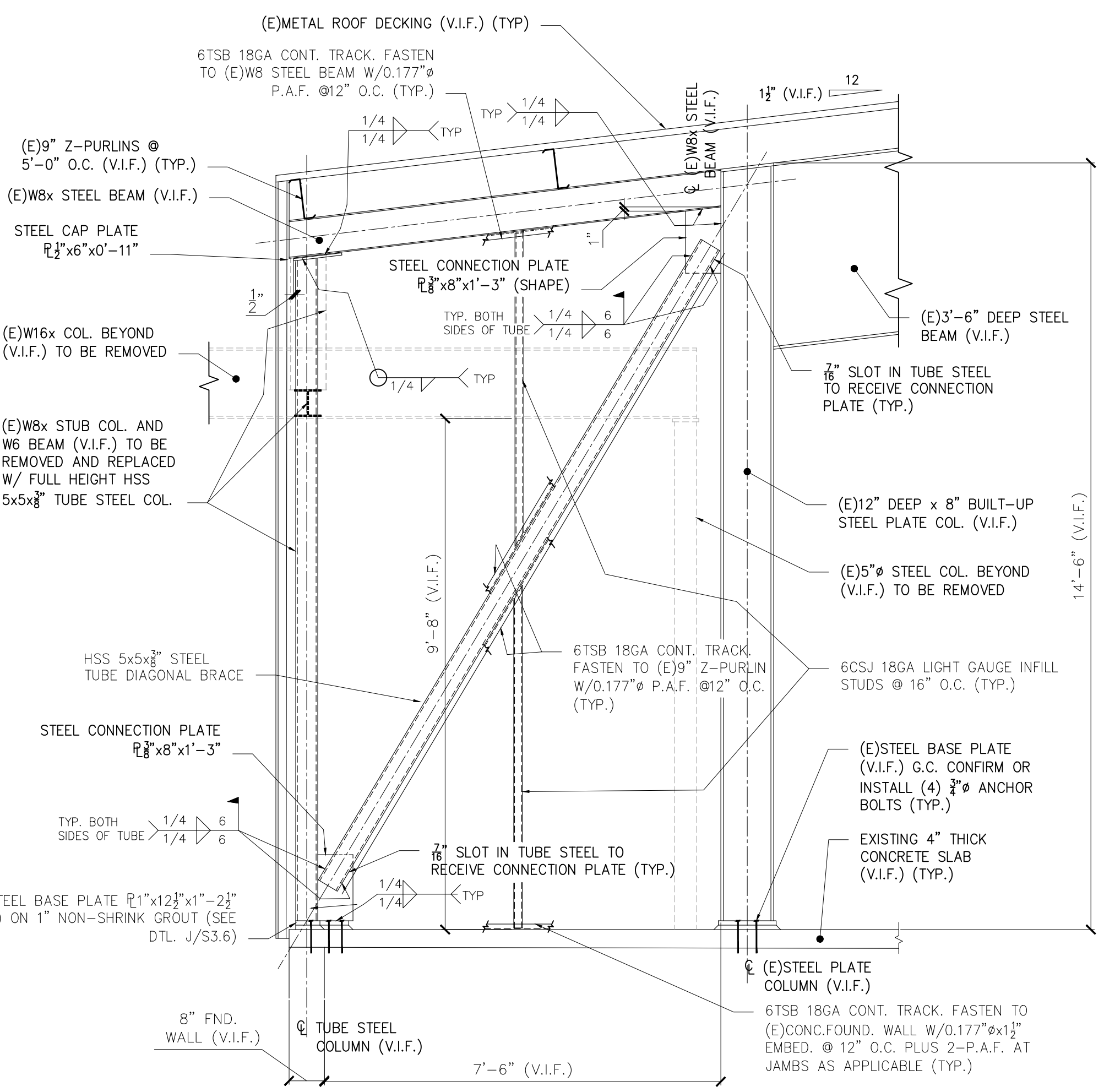
**DETAIL B** (EAST VESTIBULE)  
1/2" = 1'-0"



**DETAIL C** (SOUTH WALL)  
1/2" = 1'-0"



**DETAIL D** (SOUTH WALL)  
1/2" = 1'-0"

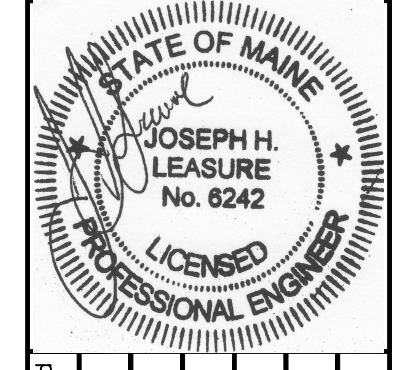


**DETAIL E** (NORTH WALL DIAGONAL BRACE)  
1/2" = 1'-0"

**PRELIMINARY  
NOT FOR CONSTRUCTION**

THESE DRAWINGS HAVE BEEN DEVELOPED BY L&L STRUCTURAL ENGINEERING SERVICES, INC. FOR THE TITLE SET ONLY. THE DRAWINGS ARE THE SOLE PROPERTY OF L&L ENGINEERING SERVICES, INC. AND THEY SHALL NOT BE USED, LENT, COPIED OR ALTERED WITHOUT THE WRITTEN CONSENT OF L&L STRUCTURAL ENGINEERING SERVICES, INC.

**L & L STRUCTURAL ENGINEERING SERVICES, INC.**  
SIX Q STREET  
SOUTH PORTLAND, MAINE 04106  
PHONE: (207) 767-4830  
FAX: (207) 799-5432



rev.	date	description	app'd
A	01/26/17	FOR PRICING & PERMIT	JHL
B	02/25/17	REVISION, FOR COORD.	JHL
C	03/01/17	REVISION, FOR PRICING & PERMIT	JHL

designed by: JHL  
drawn by: P.M.  
checked by: JHL  
scale: AS NOTED  
date: 12/19/2016  
plot date: 03/01/2017  
project #: 2014-167B

**PORTLAND ELKS LODGE**  
1945 CONGRESS STREET  
PORTLAND, MAINE  
BUILDING RENOVATIONS  
ELEVATION DETAILS

**S3.4**