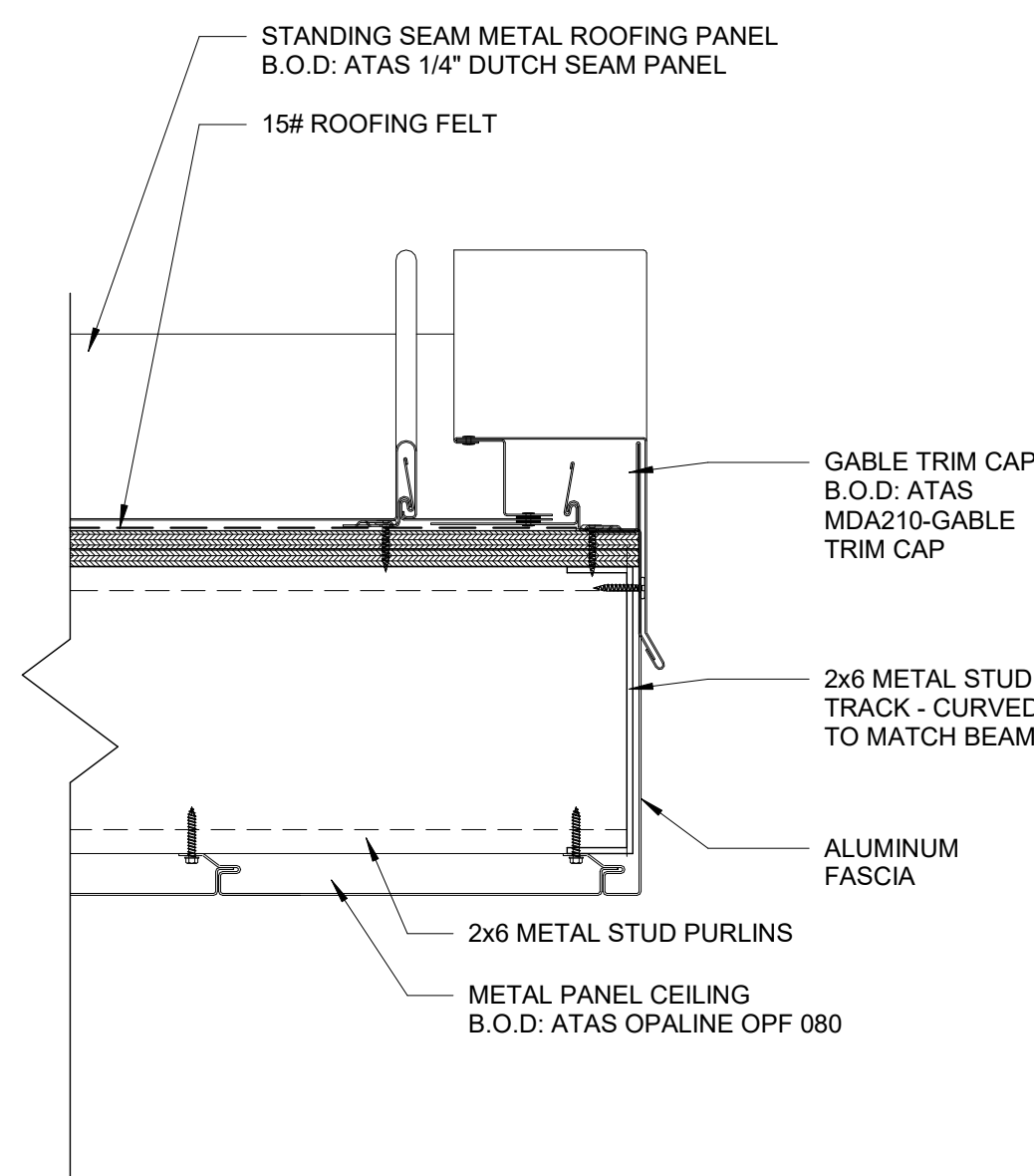
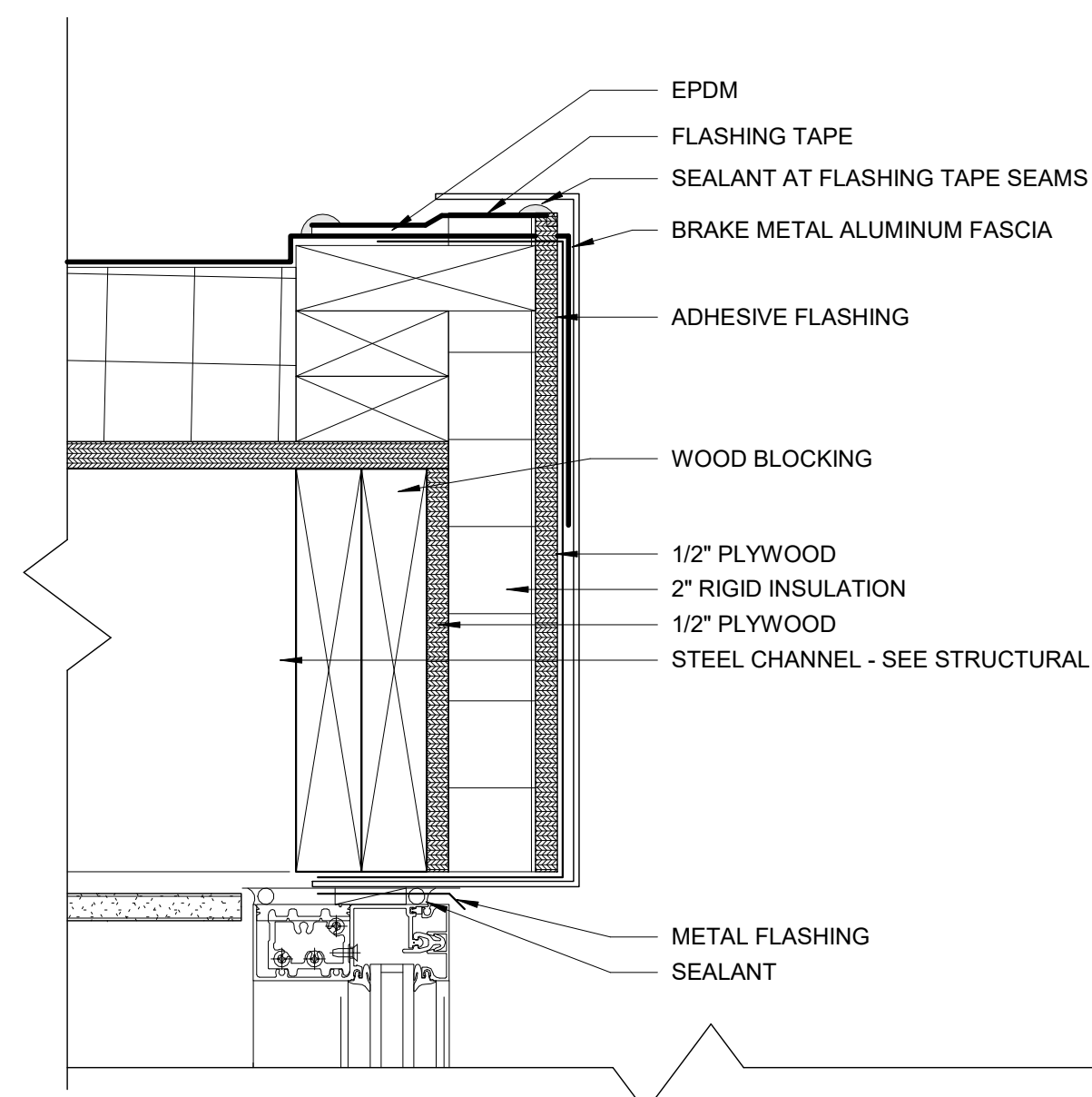


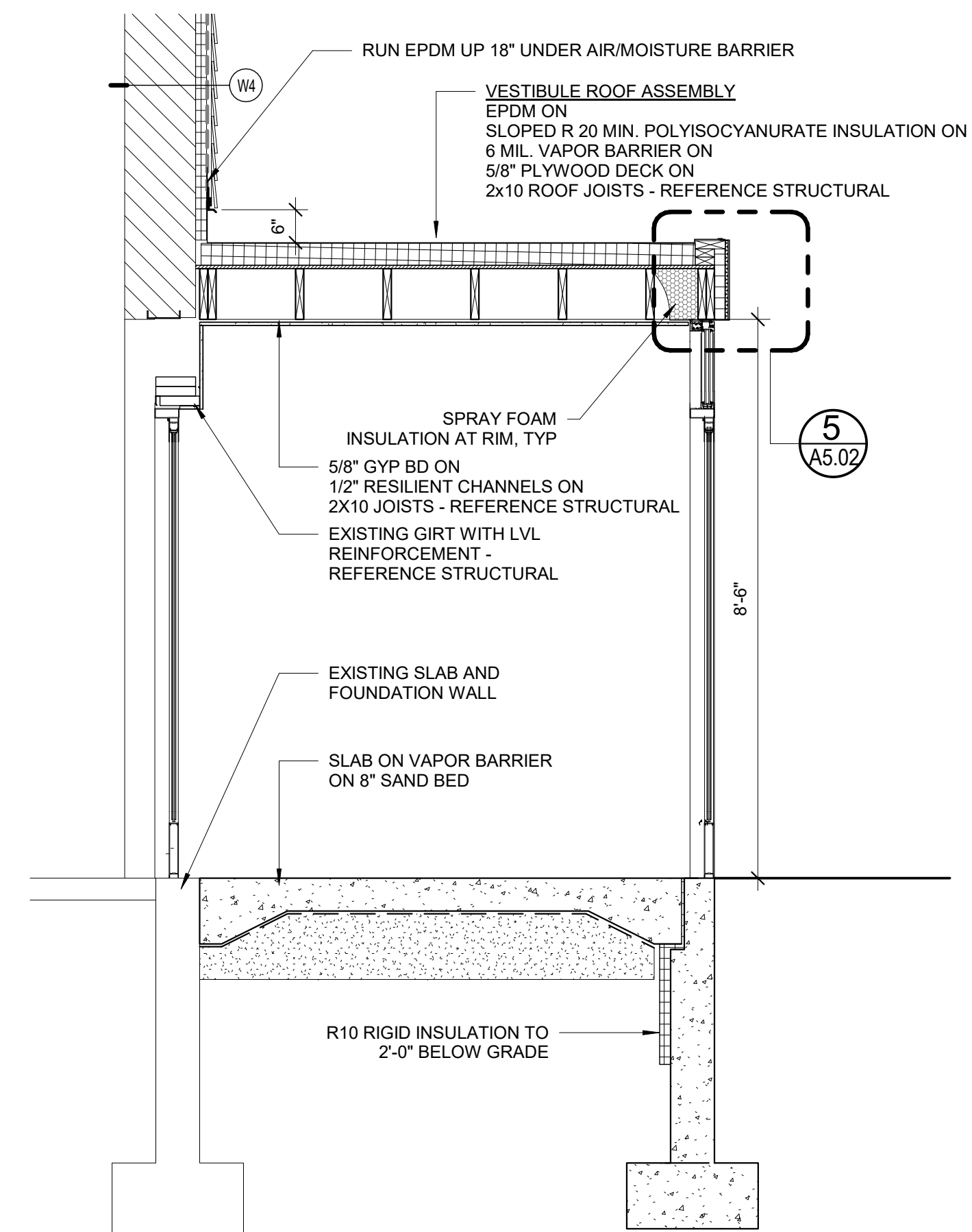
9 | ENTRY CANOPY AT STOREFRONT
3" = 1'-0"



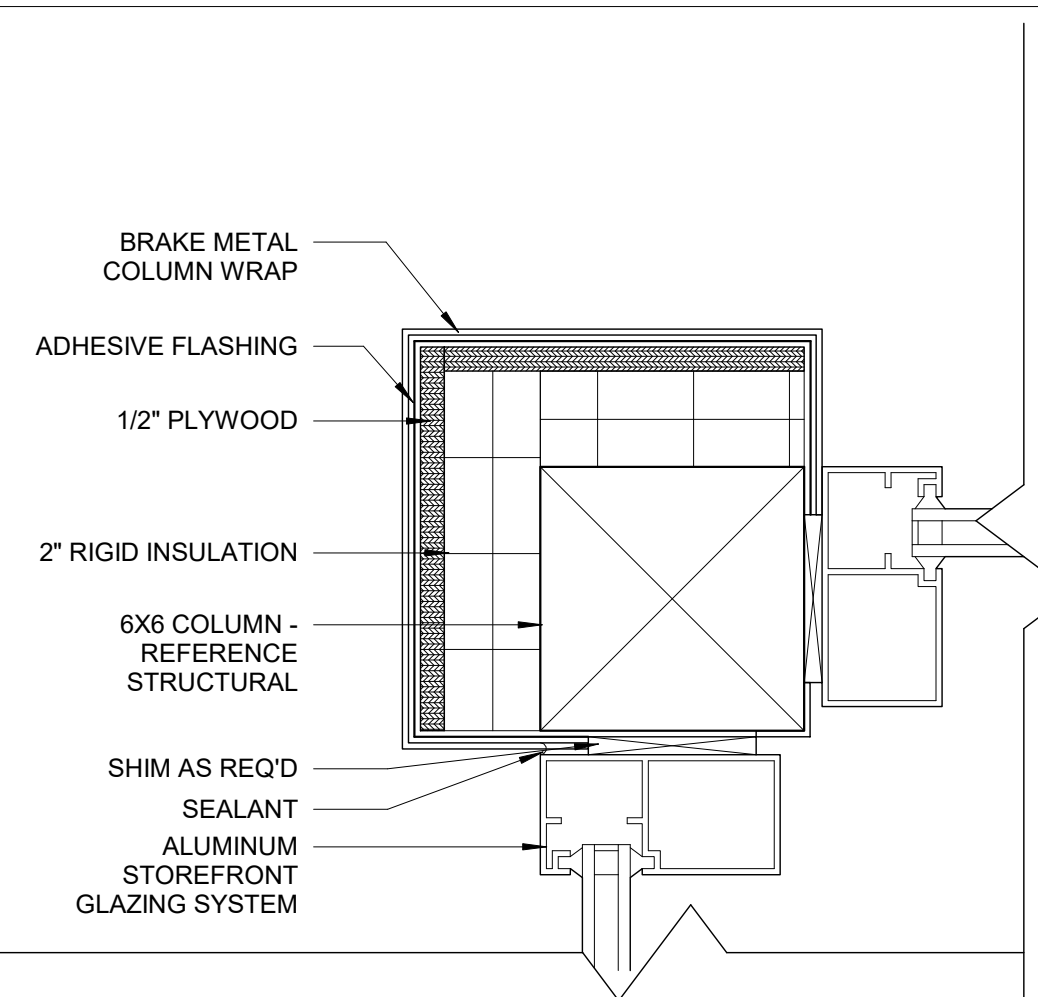
8 | ENTRY CANOPY RAKE DETAIL
3" = 1'-0"



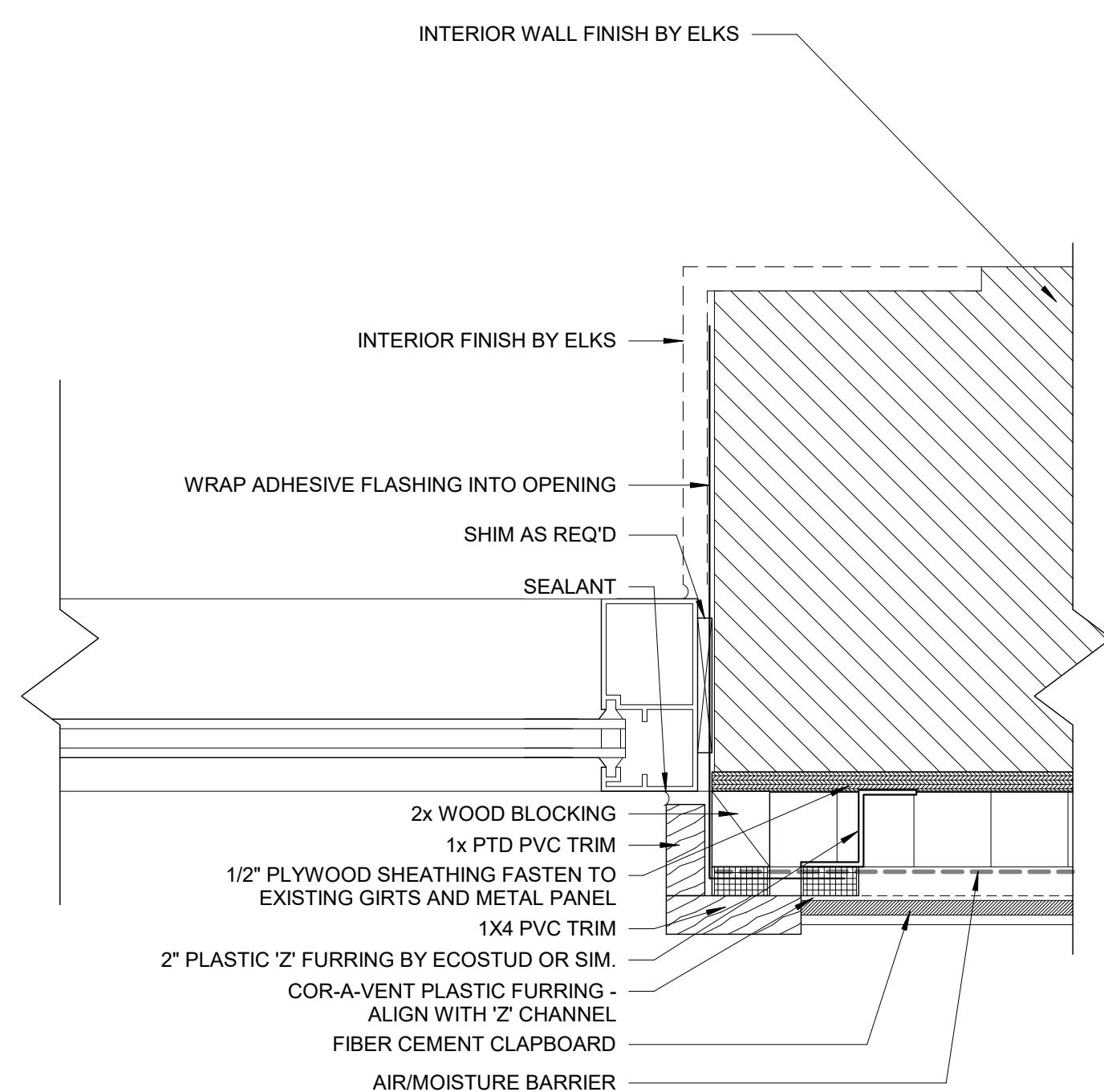
5 | EAST SIDE ENTRY VESTIBULE ROOF EDGE DETAIL
3" = 1'-0"



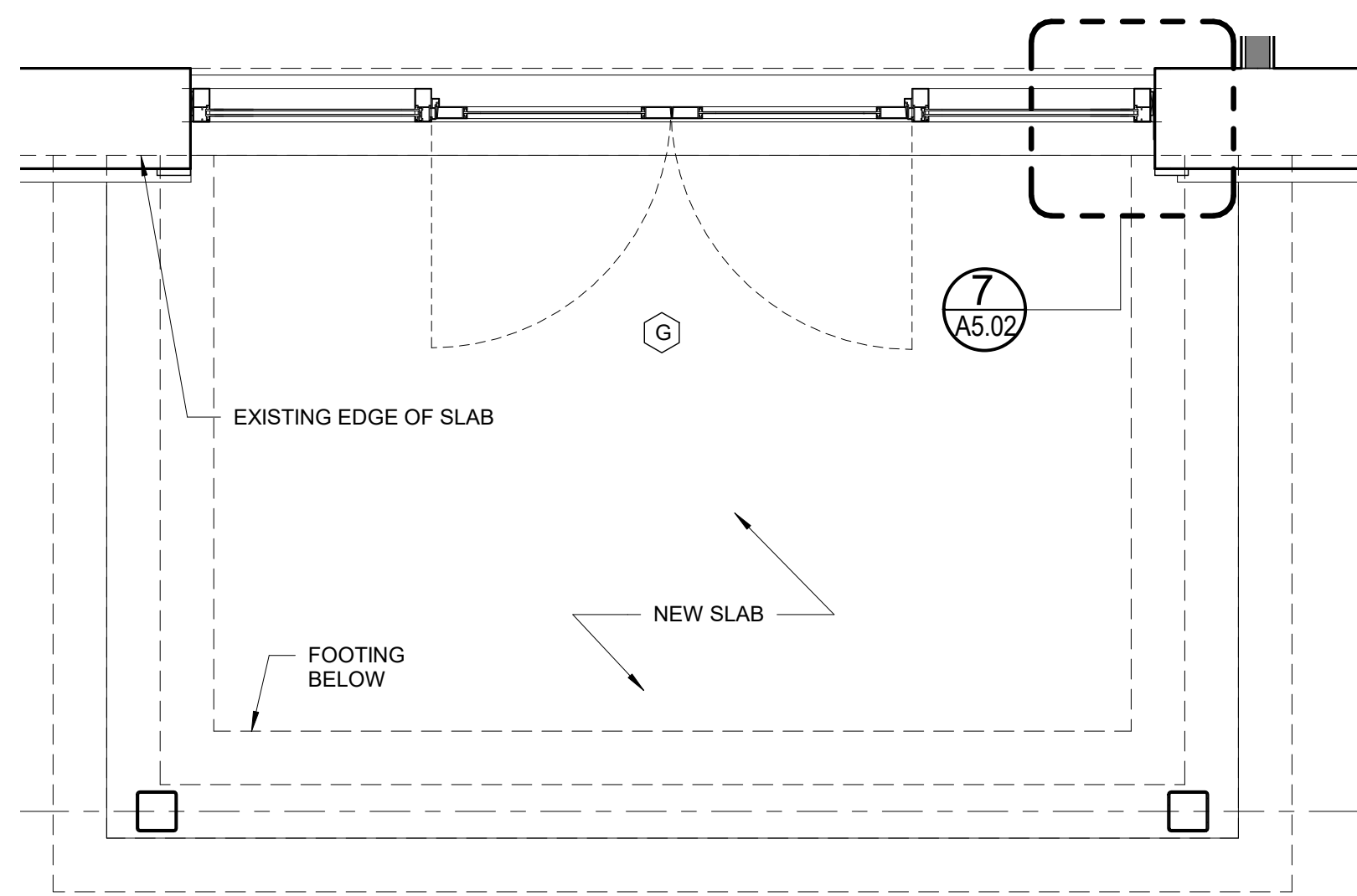
2 | EAST SIDE ENTRY VESTIBULE SECTION
1/2" = 1'-0"



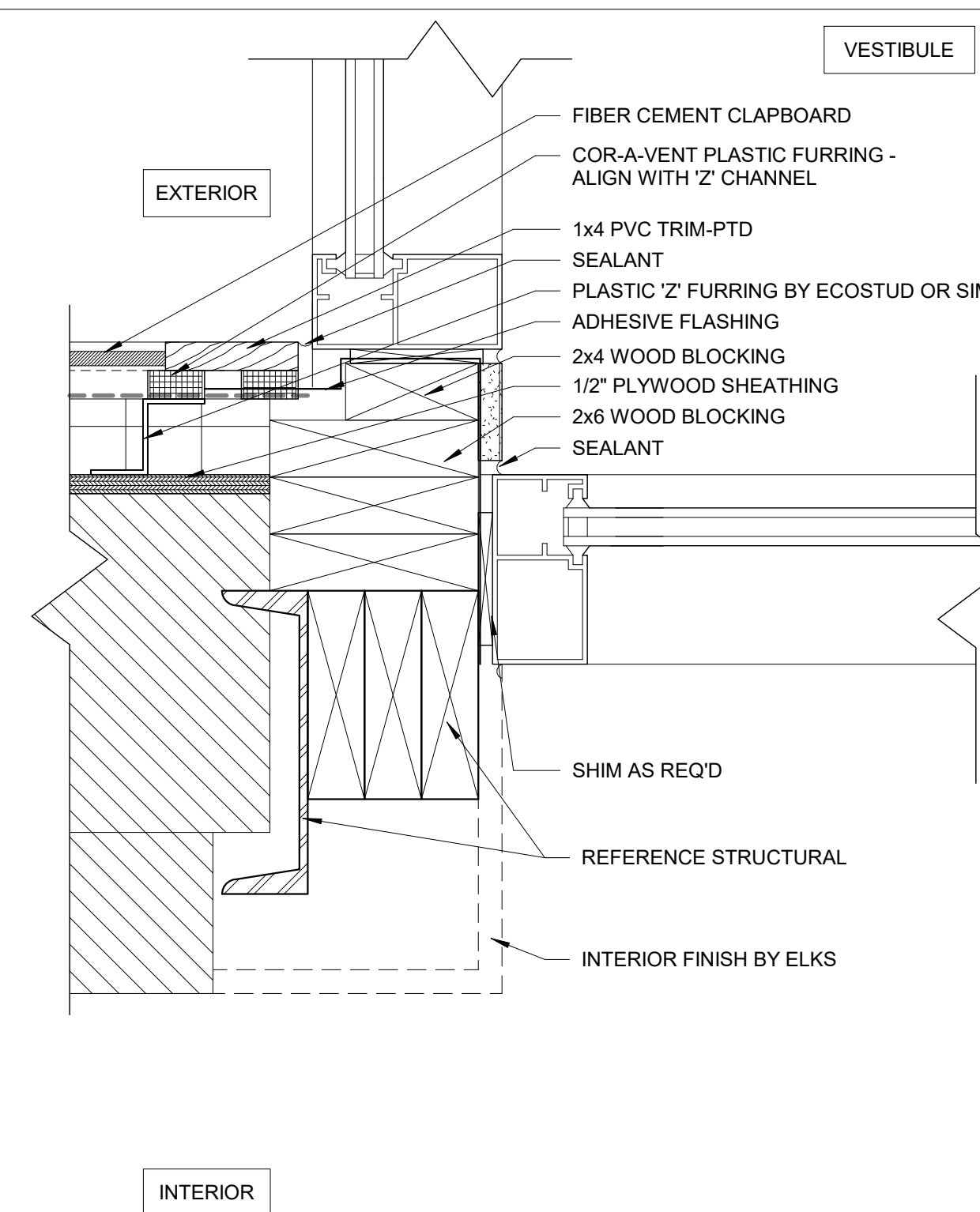
4 | VESTIBULE COLUMN DETAIL
3" = 1'-0"



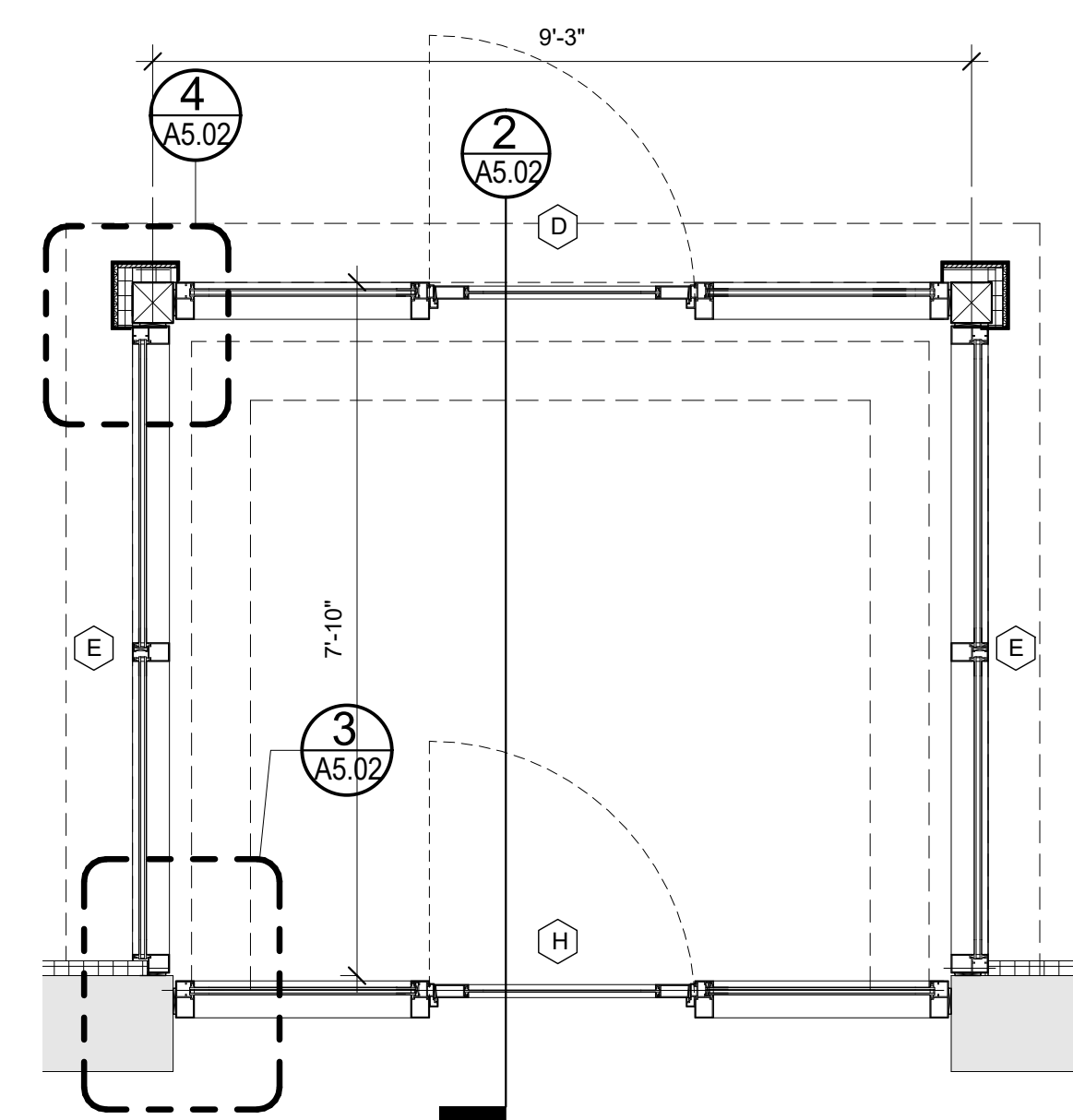
7 | VESTIBULE JAMB AT EXISTING WEST WALL
3" = 1'-0"



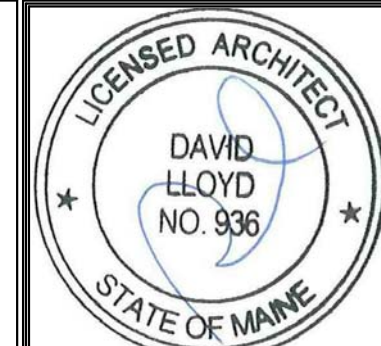
6 | WEST SIDE ENTRY CANOPY PLAN
1/2" = 1'-0"



3 | VESTIBULE JAMB AT EXISTING EAST WALL
3" = 1'-0"



1 | EAST SIDE ENTRY VESTIBULE PLAN
1/2" = 1'-0"



Prepared For:
Northland Management
17 South St., 3rd floor
Portland, ME

Consultant:
ARCHETYPE architects
48 Union Wharf Portland, Maine 04101
(207) 772-0022 ARCHETYPE@ARCHETYPEPEA.COM

Project:
Elks Lodge
Portland, Maine

Revisions:
Scale: As indicated
Date: 01/26/2017
STOREFRONT DETAILS

A5.02