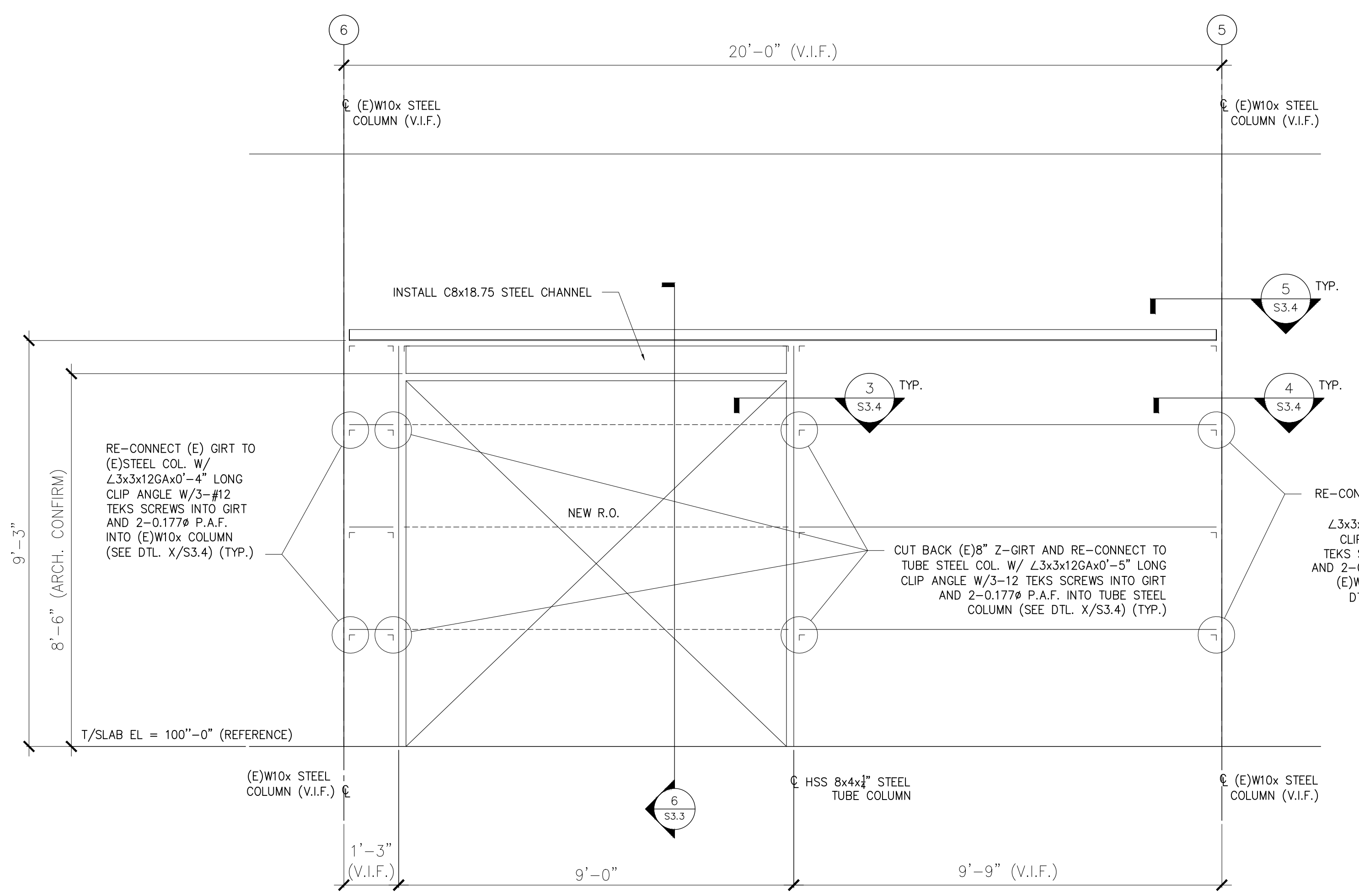
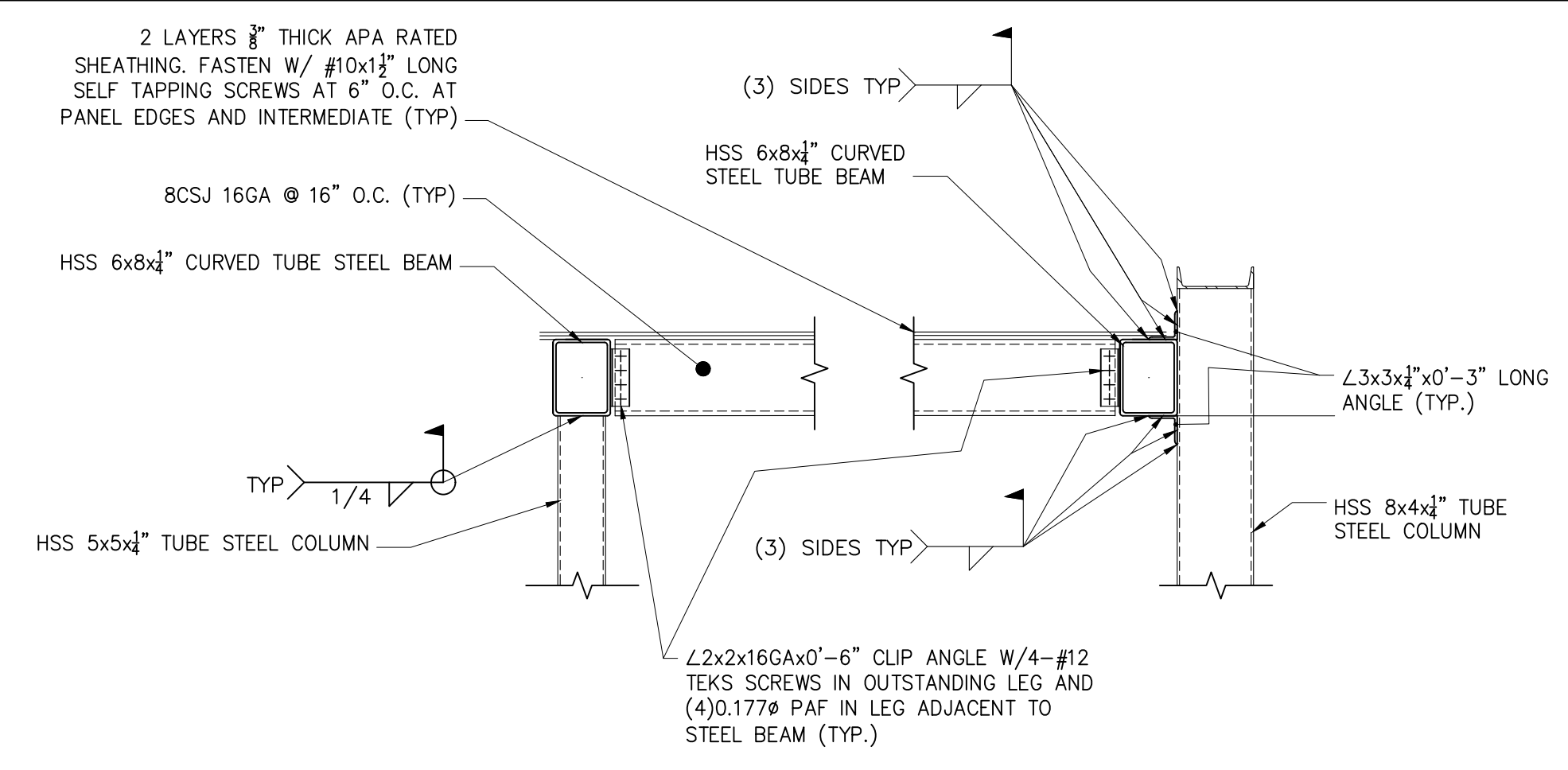


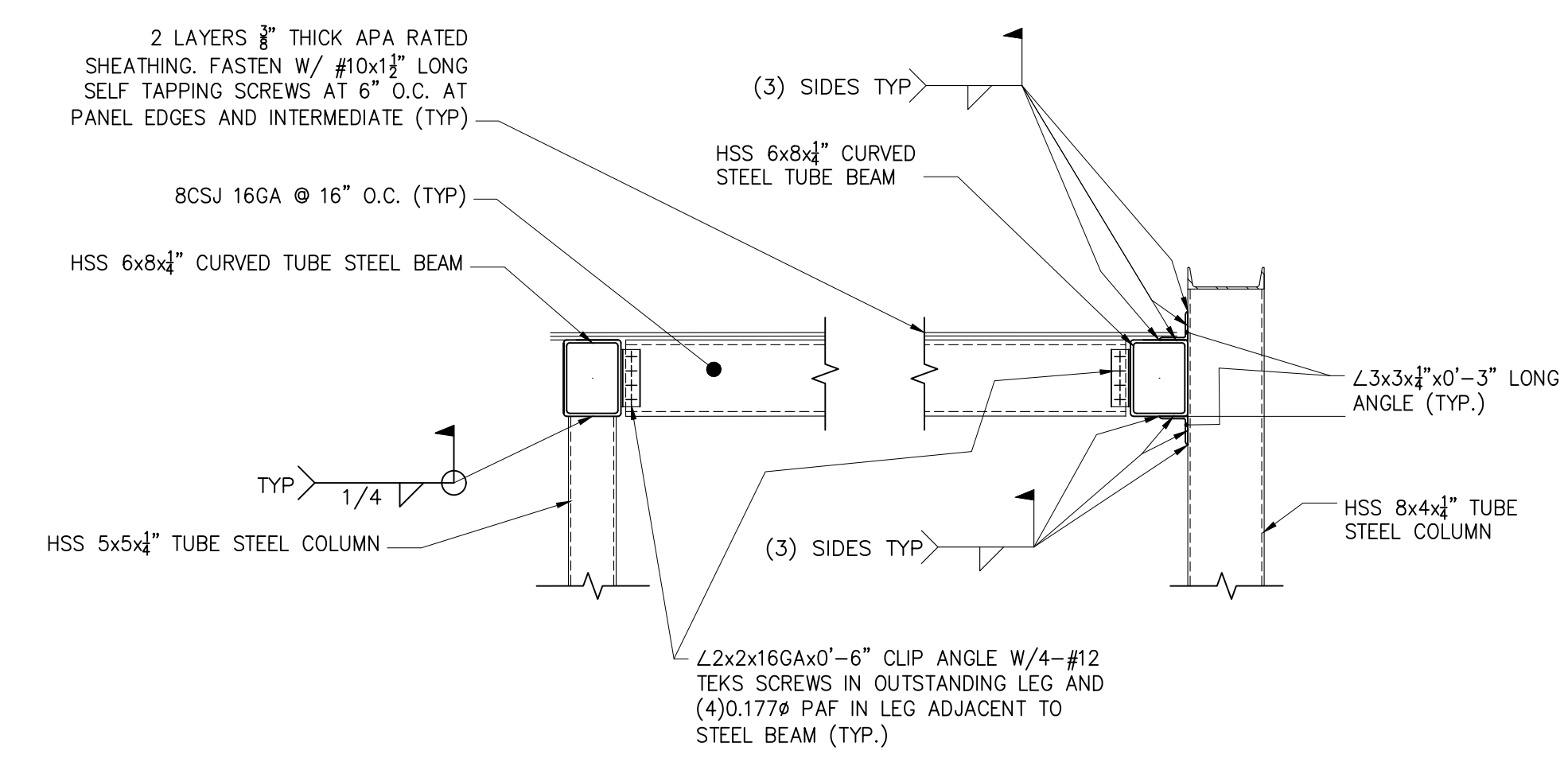
DETAIL A
S1.1
3/4" = 1'-0"



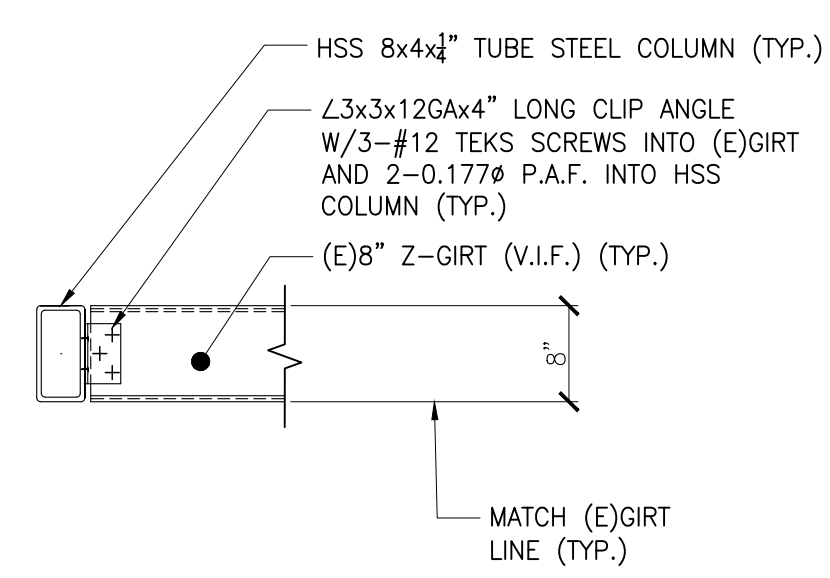
DETAIL B
S1.1
3/4" = 1'-0"



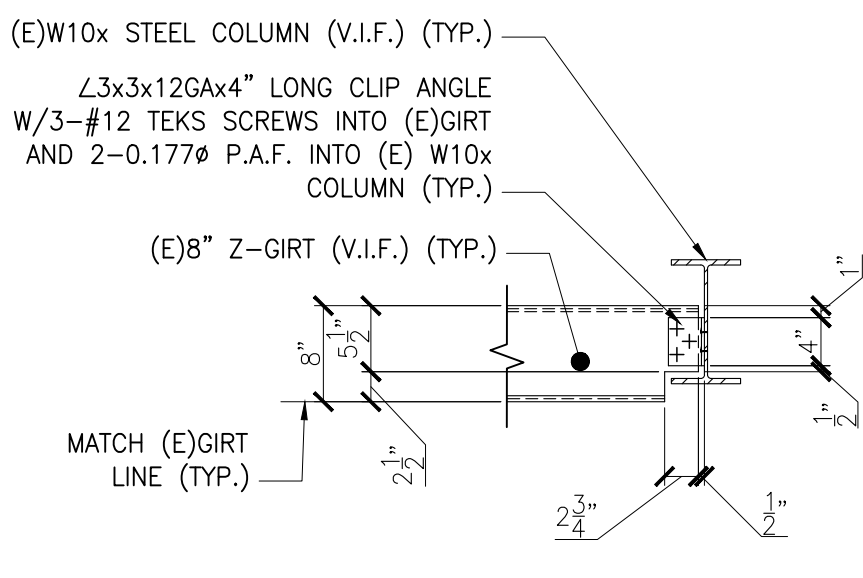
SECTION 1
S3.3
S3.4
3/4" = 1'-0"



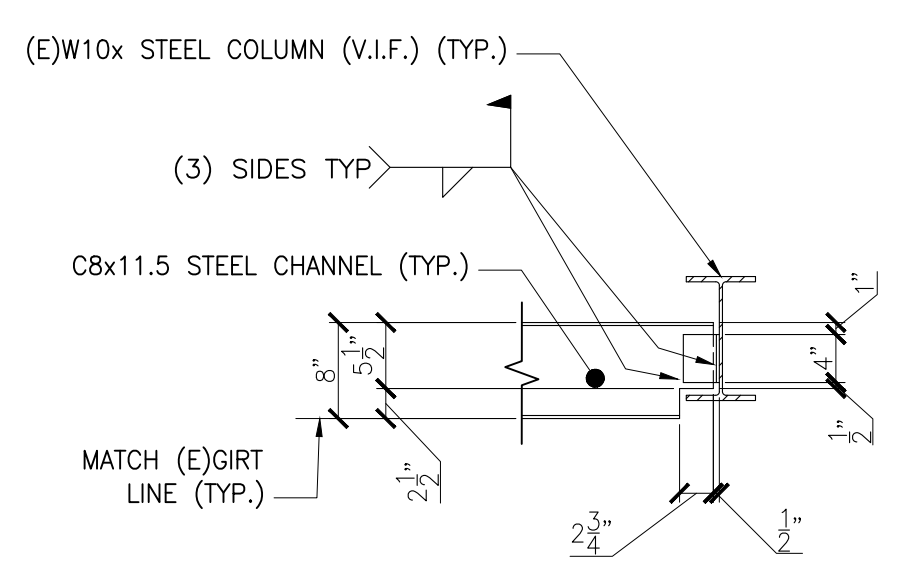
SECTION 1
S3.3
S3.4
3/4" = 1'-0"



SECTION 3
S3.3
3/4" = 1'-0"



SECTION 4
S3.3
3/4" = 1'-0"

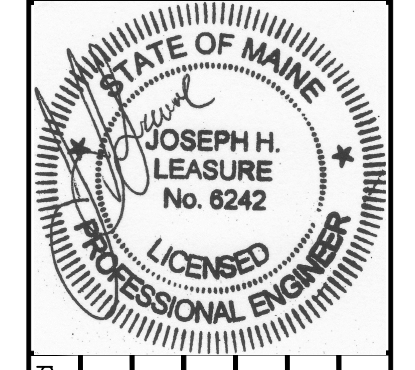


SECTION 5
S3.3
3/4" = 1'-0"

**PRELIMINARY
NOT FOR CONSTRUCTION**

THESE DRAWINGS HAVE BEEN DEVELOPED BY L&L STRUCTURAL ENGINEERING SERVICES, INC. FOR THE TITLED SET ONLY. THE DRAWINGS ARE THE SOLE PROPERTY OF L&L ENGINEERING SERVICES, INC. AND THEY SHALL NOT BE USED, LENT, COPIED OR ALTERED WITHOUT THE WRITTEN CONSENT OF L&L STRUCTURAL ENGINEERING SERVICES, INC.

**L & L STRUCTURAL
ENGINEERING SERVICES, INC.**
SIX Q STREET
SOUTH PORTLAND, MAINE 04106
PHONE: (207) 767-4530
FAX: (207) 799-5432



rev.	date	description	app'd
A	01/26/17	FOR PRICING & PERMIT	JHL

designed by: JHL
drawn by: PJM
checked by: JHL
scale: AS NOTED
date: 12/19/2016
plot date: 01/26/2017
project #: 2014-187A

PORTLAND ELKS LODGE
1945 CONGRESS STREET
PORTLAND, MAINE
BUILDING RENOVATIONS
DETAILS AND SECTIONS

S3.4