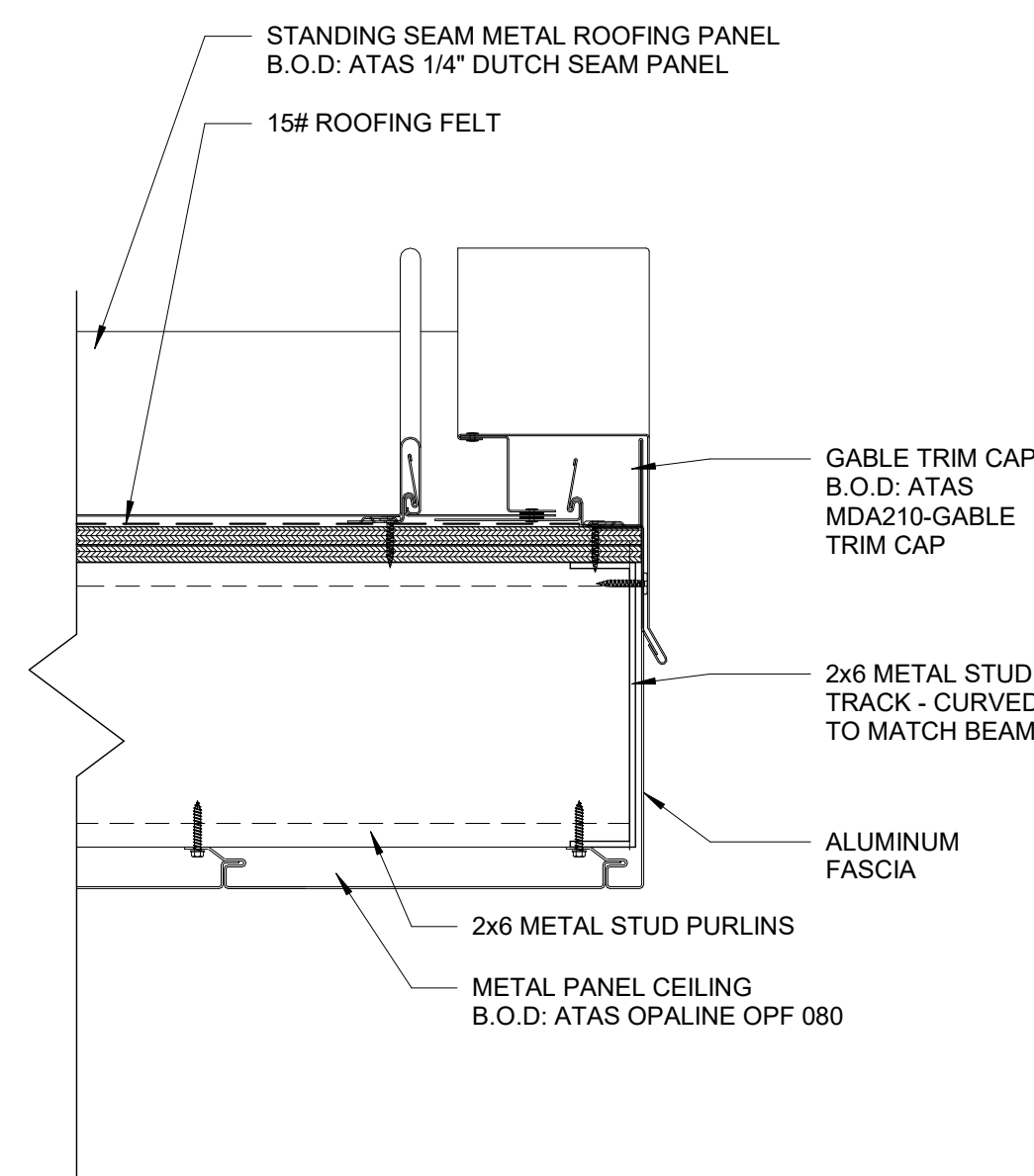
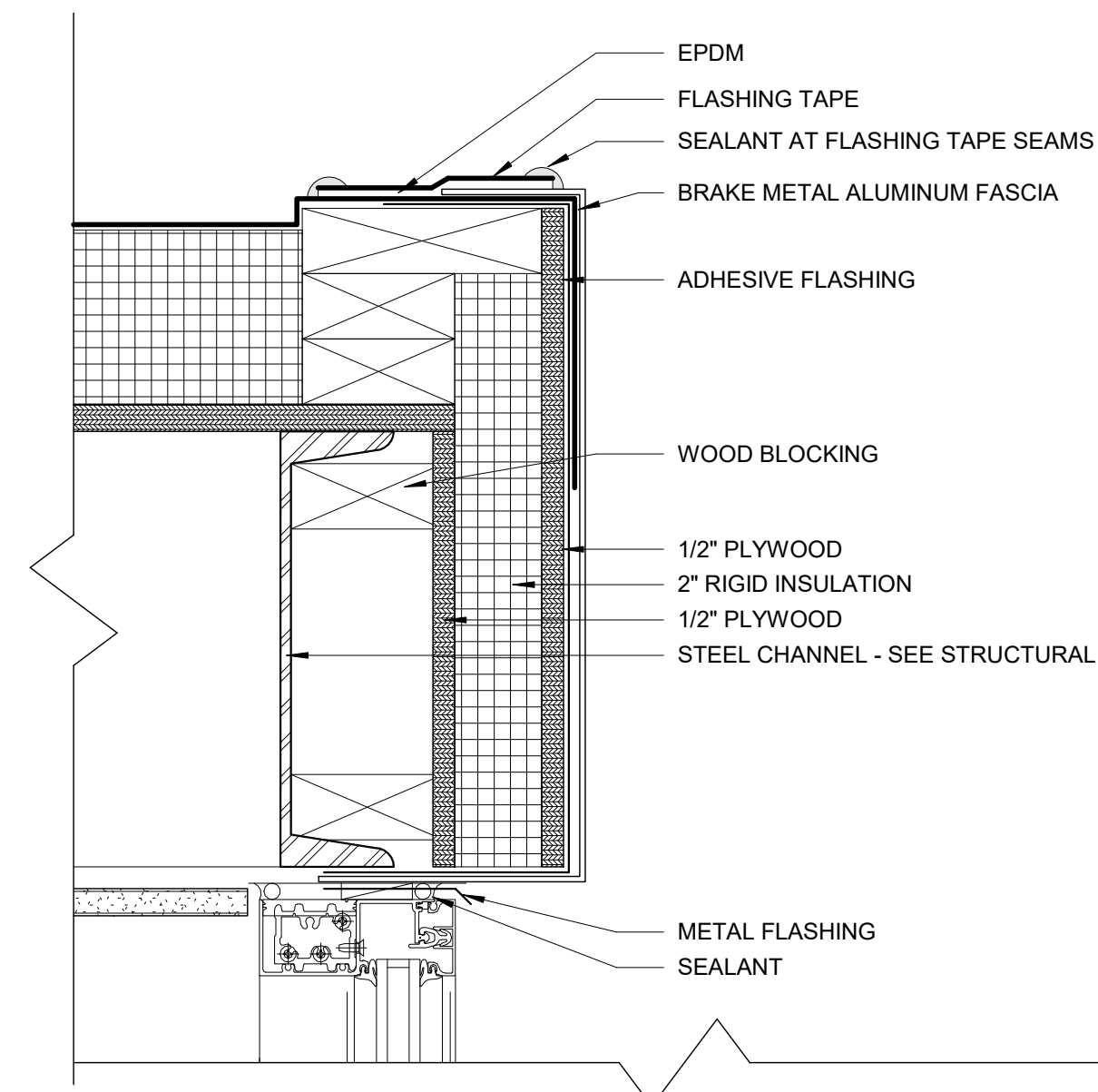


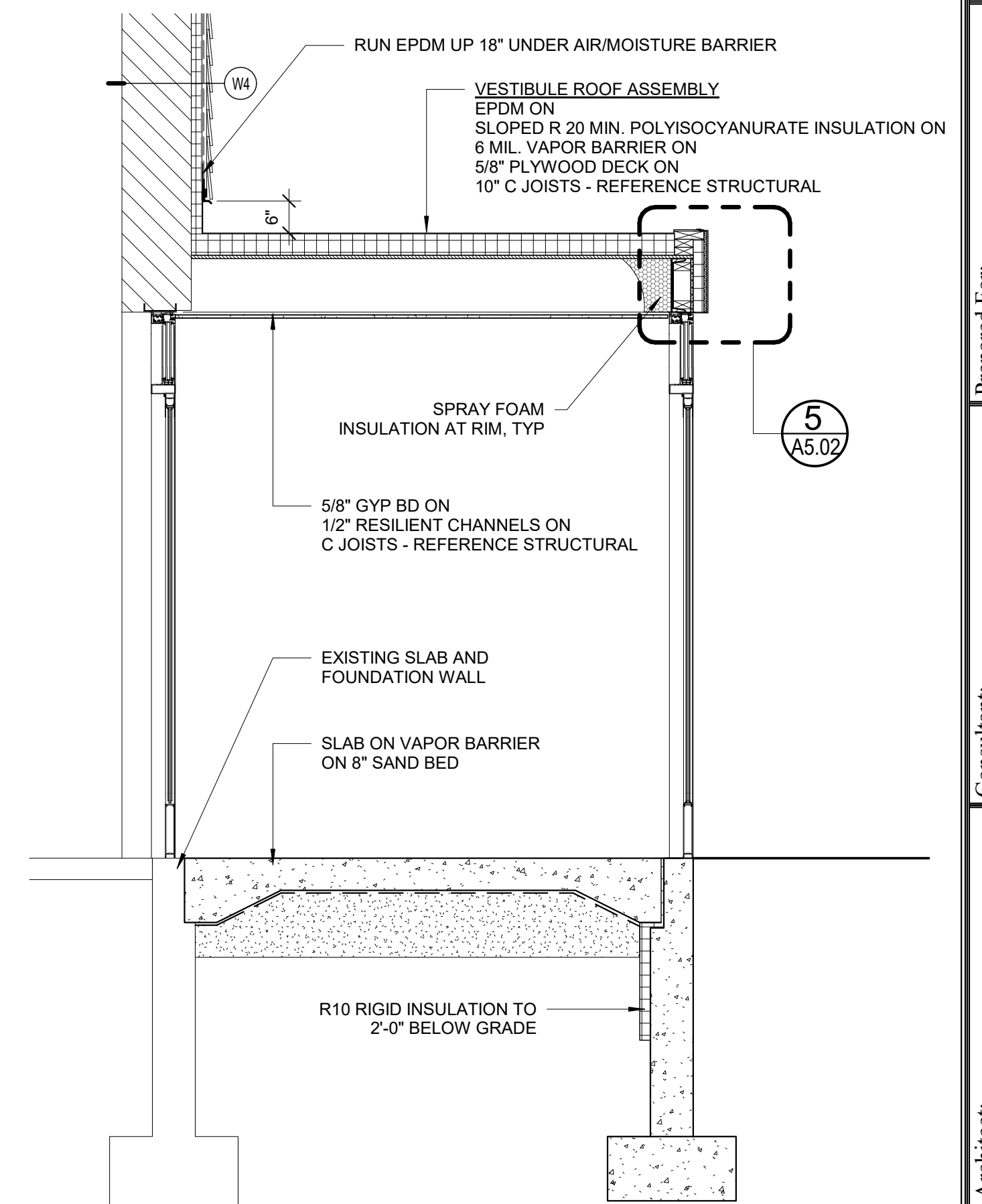
9 | ENTRY CANOPY AT STOREFRONT  
3" = 1'-0"



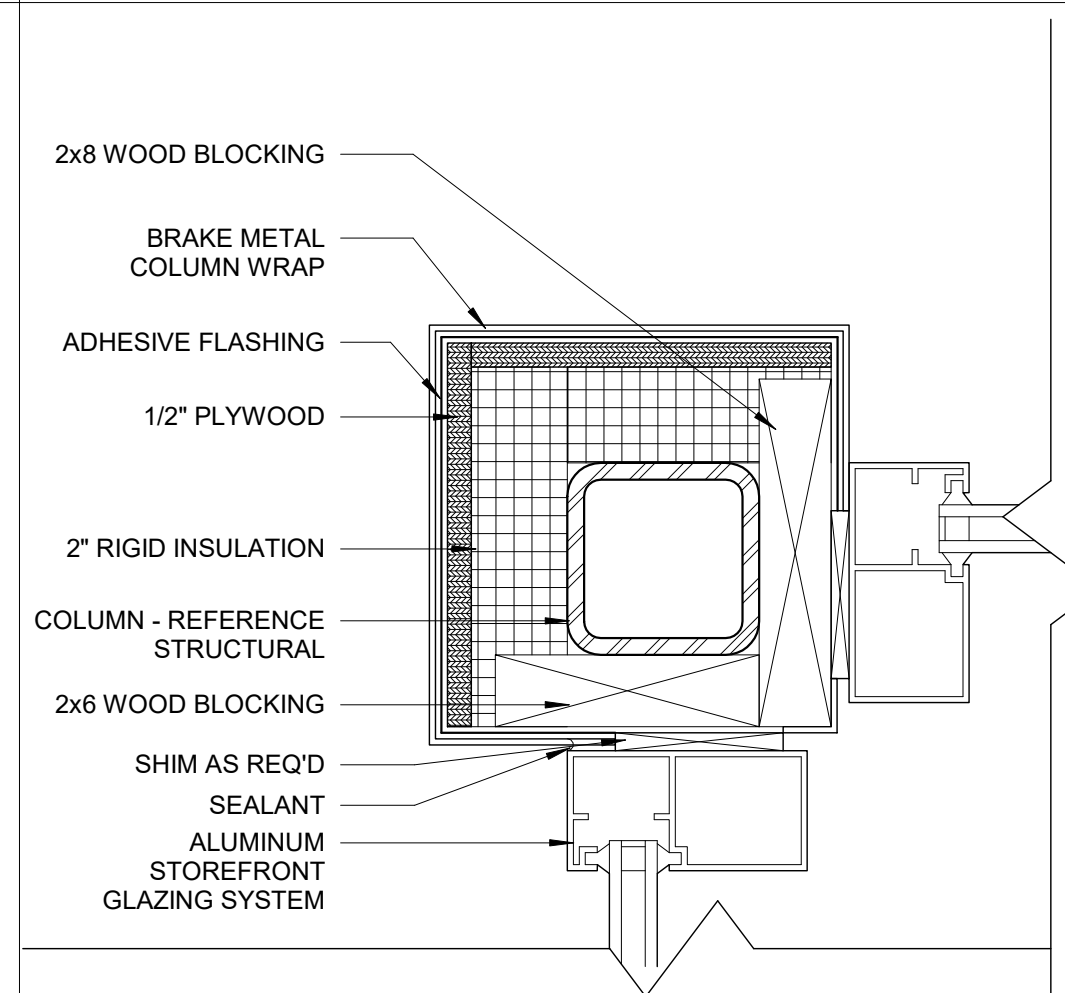
8 | ENTRY CANOPY RAKE DETAIL  
3" = 1'-0"



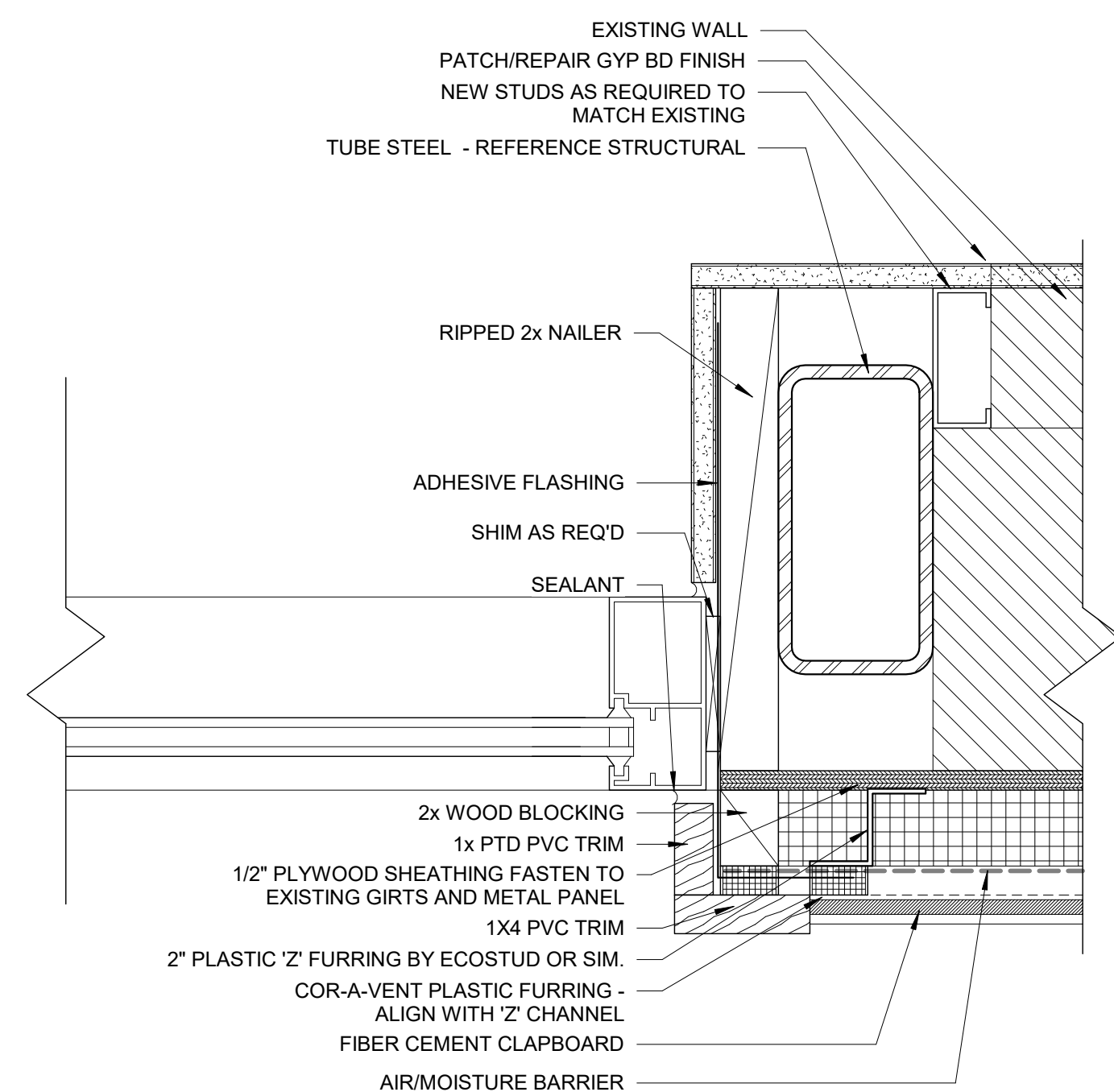
5 | EAST SIDE ENTRY VESTIBULE ROOF EDGE DETAIL  
3" = 1'-0"



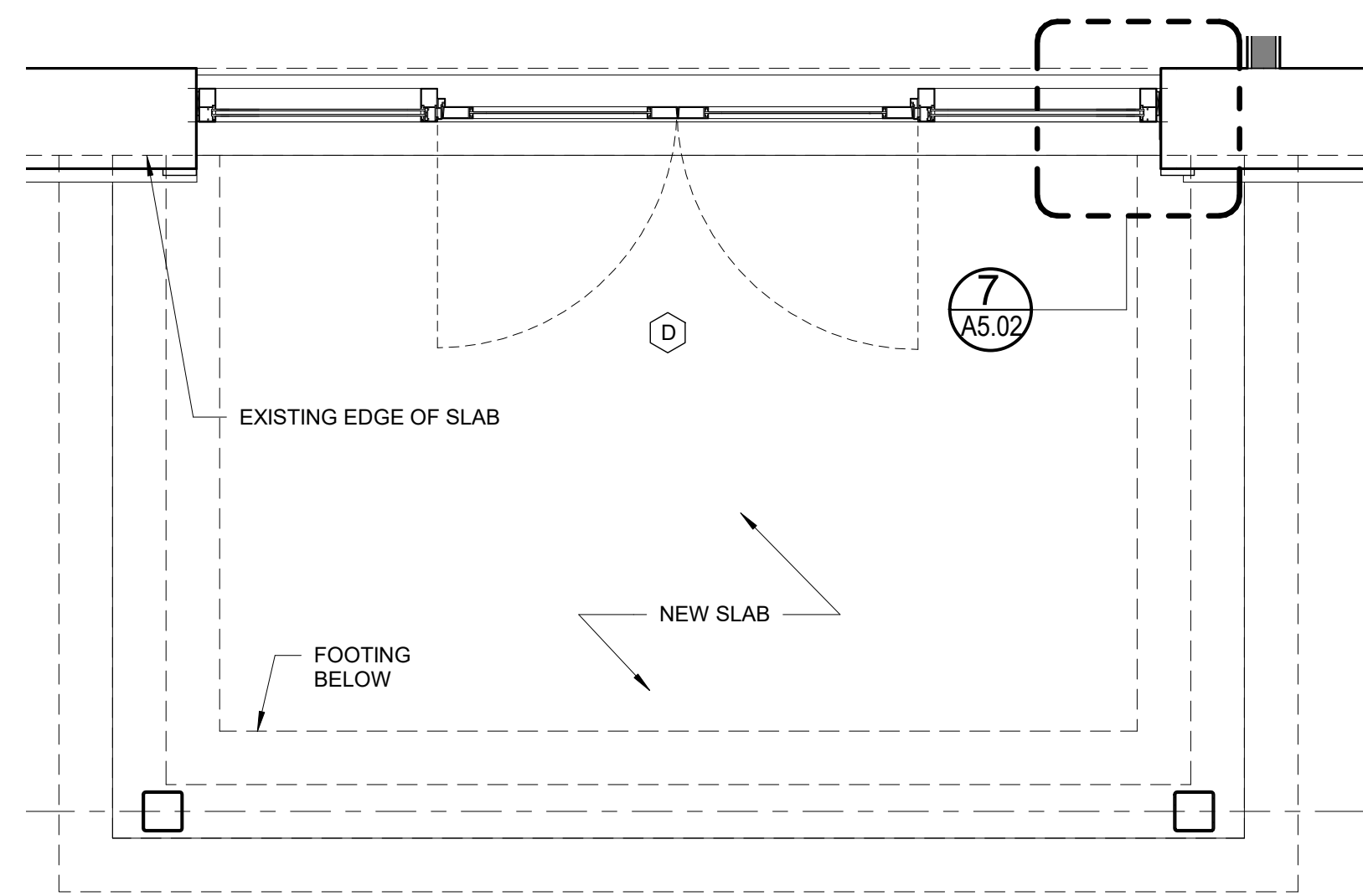
2 | EAST SIDE ENTRY VESTIBULE SECTION  
1/2" = 1'-0"



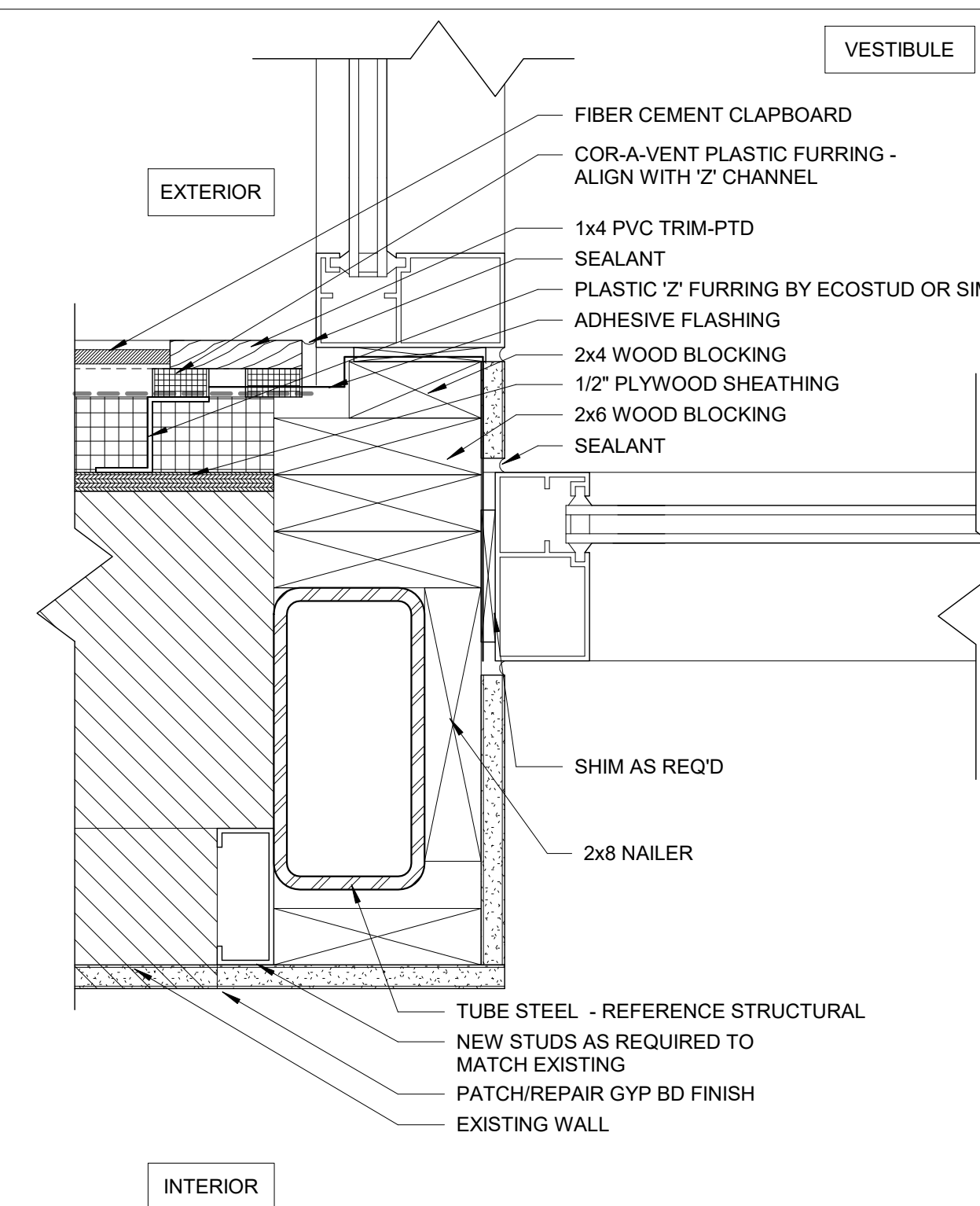
4 | VESTIBULE COLUMN DETAIL  
3" = 1'-0"



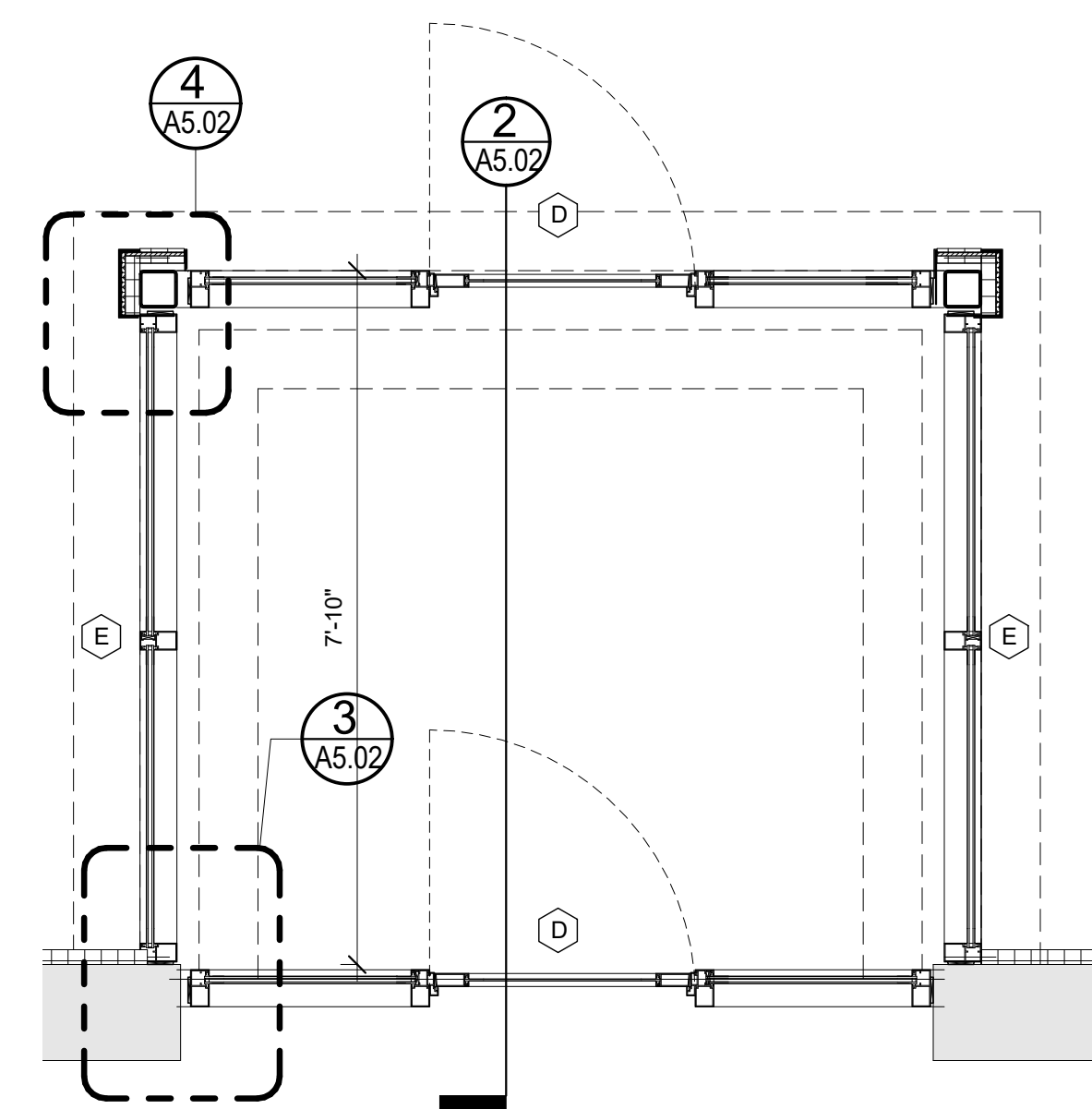
7 | VESTIBULE JAMB AT EXISTING WEST WALL  
3" = 1'-0"



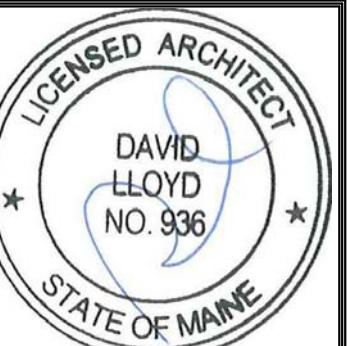
6 | WEST SIDE ENTRY CANOPY PLAN  
1/2" = 1'-0"



3 | VESTIBULE JAMB AT EXISTING EAST WALL  
3" = 1'-0"



1 | EAST SIDE ENTRY VESTIBULE PLAN  
1/2" = 1'-0"



Prepared For:  
**Northland Management**  
17 South St., 3rd floor  
Portland, ME

Consultant:  
**ARCHETYPE architects**  
48 Union Wharf Portland, Maine 04101  
(207) 772-6022 ARCHETYPE@ARCHETYPEPA.COM

Project:  
**Elks Lodge**  
Portland, Maine

Revisions:

Date: 01/26/2017  
Scale: As indicated  
**STOREFRONT DETAILS**

**A5.02**