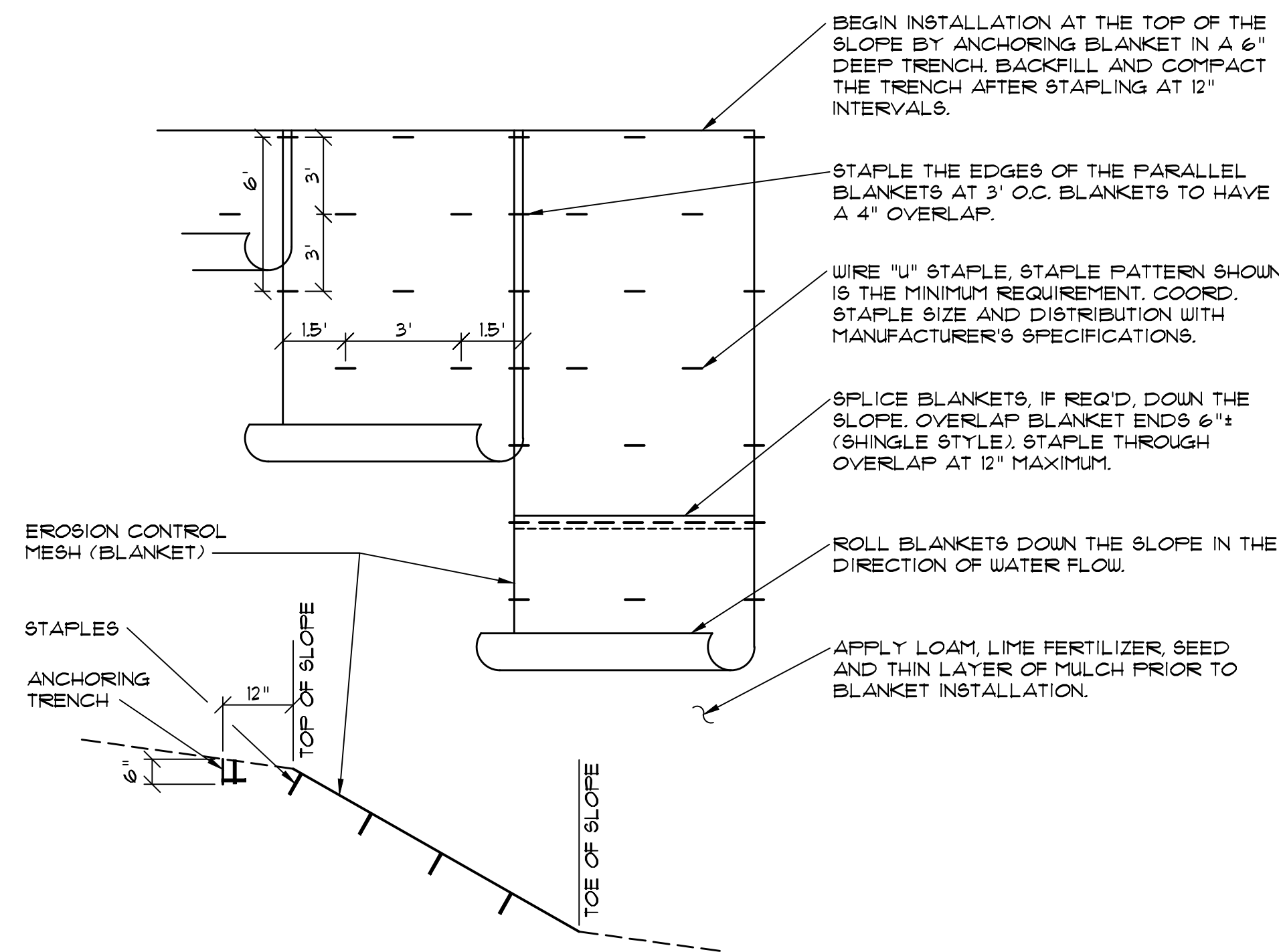
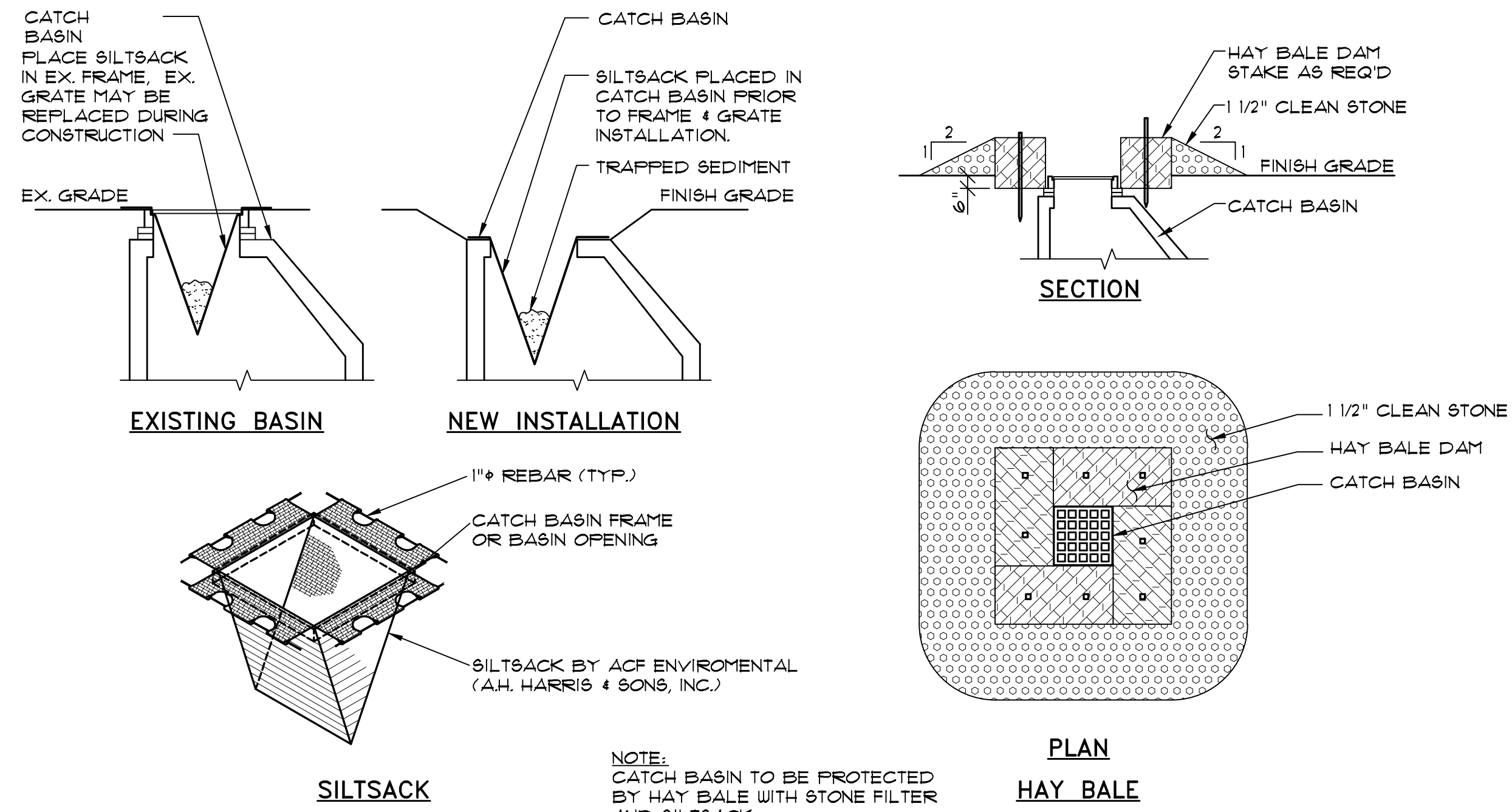


- NOTES:**
1. MAINTAIN ENTRANCE IN A CONDITION THAT WILL PREVENT TRACKING OF SEDIMENT ONTO PUBLIC RIGHT-OF-WAY. IF WASHING IS REQUIRED PREVENT SEDIMENT FROM ENTERING WATERWAYS, DITCHES OR STORM DRAINS.
 2. REMOVE STABILIZED CONSTRUCTION ENTRANCE TO FINISH ROAD CONSTRUCTION & PAVEMENT.

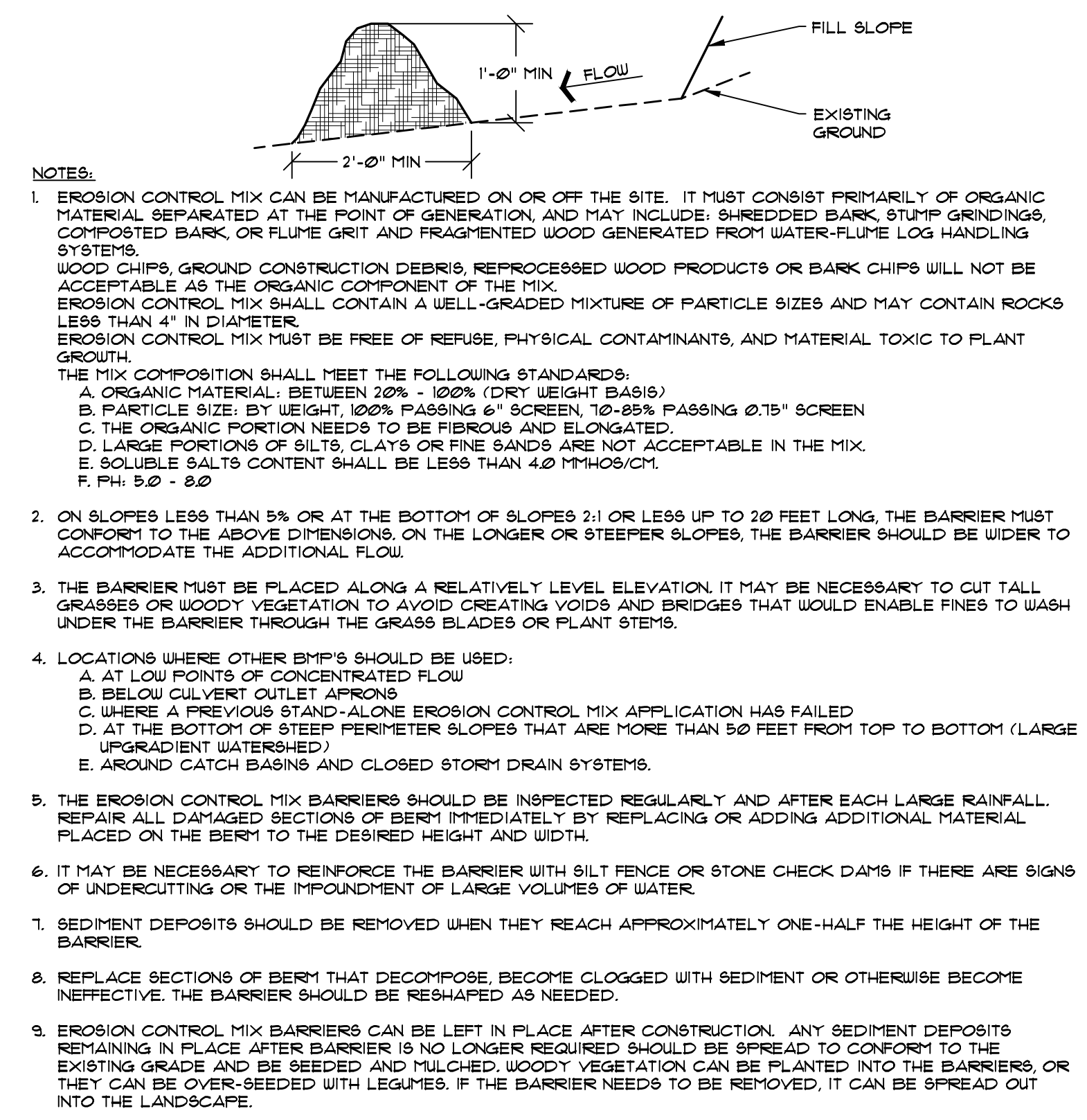
3 STABILIZED CONSTRUCTION ENTRANCE DETAIL
NOT TO SCALE



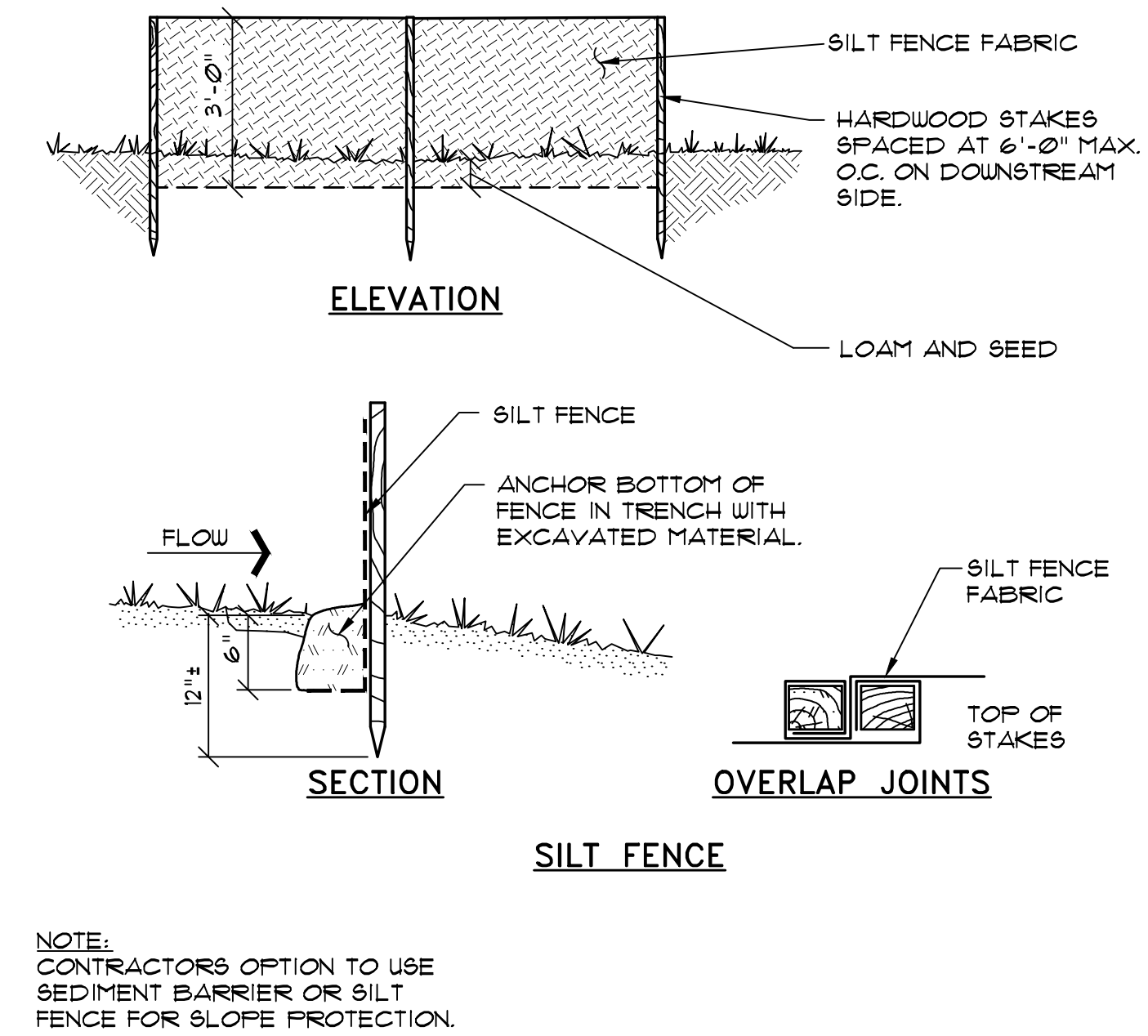
4 EROSION CONTROL MESH INSTALLATION DETAIL
NOT TO SCALE



1 CATCH BASIN PROTECTION
NOT TO SCALE



2 EROSION CONTROL MIX SEDIMENT BARRIER SURFACE DRAINAGE SEDIMENT CONTROL
NOT TO SCALE



REV.	DATE	DESCRIPTION

NORTHLAND ENTERPRISES, LLC 17 SOUTH STREET PORTLAND, MAINE 04101	DRN BY: RJS DESIGN BY: TSG CHK BY: TSG
SCALE: AS SHOWN DATE: JUNE 17, 2016 PROJECT: 13151	