

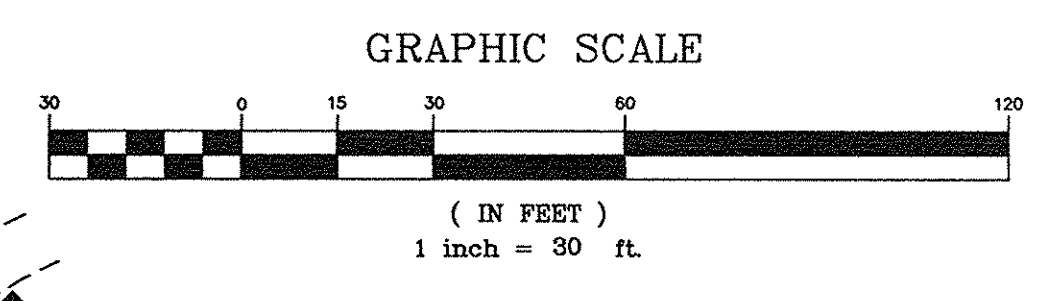
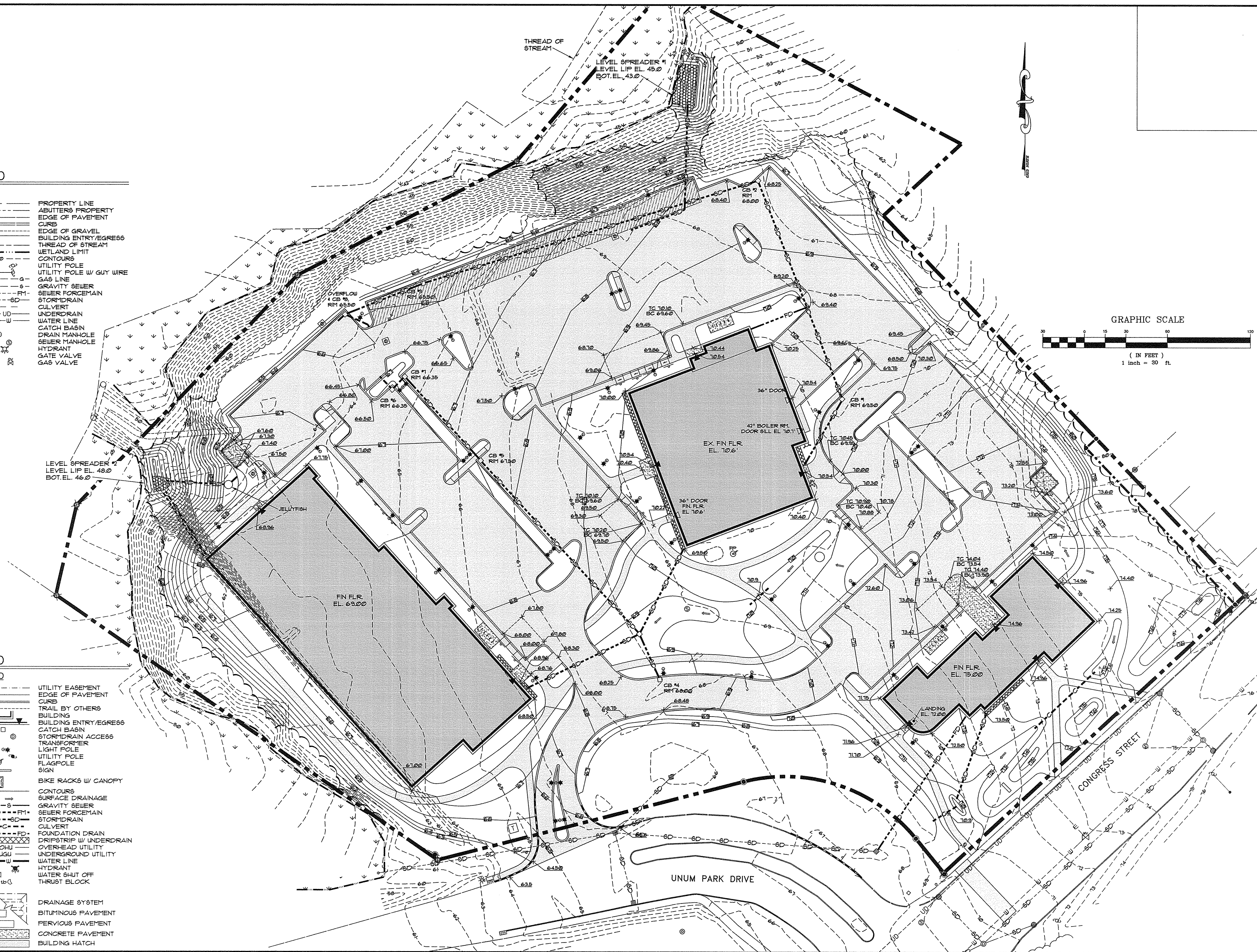
9/9/16

LEGEND
EXISTING

---	PROPERTY LINE
---	ABUTTERS PROPERTY
---	EDGE OF PAVEMENT
---	CURB
---	EDGE OF GRAVEL
---	BUILDING ENTRY/EGRESS
---	THREAD OF STREAM
---	WETLAND LIMIT
---	CONTOURS
---	UTILITY POLE
---	UTILITY POLE W/ GUY WIRE
---	GAS LINE
---	GRAVITY SEWER
---	SEWER FORCEMAIN
---	STORMDRAIN
---	CULVERT
---	UNDERDRAIN
---	WATER LINE
---	CATCH BASIN
---	DRAIN MANHOLE
---	SEWER MANHOLE
---	HYDRANT
---	GATE VALVE
---	GAS VALVE

LEGEND
PROPOSED

---	UTILITY EASEMENT
---	EDGE OF PAVEMENT
---	CURB
---	TRAIL BY OTHERS
---	BUILDING ENTRY/EGRESS
---	CATCH BASIN
---	STORMDRAIN ACCESS
---	TRANSFORMER
---	LIGHT POLE
---	UTILITY POLE
---	FLAGPOLE
---	SIGN
---	BIKE RACKS W/ CANOPY
---	CONTOURS
---	SURFACE DRAINAGE
---	GRAVITY SEWER
---	SEWER FORCEMAIN
---	STORMDRAIN
---	CULVERT
---	FOUNDATION DRAIN
---	DRIPSTRIP W/ UNDERDRAIN
---	OVERHEAD UTILITY
---	UNDERGROUND UTILITY
---	WATER LINE
---	HYDRANT
---	WATER SHUT OFF
---	THRUST BLOCK
---	DRAINAGE SYSTEM
---	BITUMINOUS PAVEMENT
---	PERVIOUS PAVEMENT
---	CONCRETE PAVEMENT
---	BUILDING HATCH



REV.	DATE	DESCRIPTION
4	9/9/16	ADDED LABEL TO IDENTIFY STREAM
3	8/25/16	REV'D PER CITY REVIEW COMMENTS
2	7/20/16	REV'D PER CITY REVIEW COMMENTS
1	7/11/16	REV'D DRAINAGE SYSTEM, REV'D PER REVIEW COMMENTS

NORTHLAND ENTERPRISES, LLC
 17 SOUTH STREET
 PORTLAND, MAINE 04101

SCALE: AS SHOWN
 DATE: APRIL 14, 2016
 PROJECT: 13151

DRN BY: JDC
 DESG BY: TSG
 CHK BY: TSG

1945 CONGRESS STREET
 ELKS LODGE, PORTLAND, MAINE

GRADING PLAN

C1.4
 MAP/LOT 216-A-6 & 217-A-1