

Prepared For:  
**NORTHLAND  
MANAGEMENT**  
Address  
City, State

Consultant:

Architect:  
**ARCHETYPE  
a r c h i t e c t s**  
48 Union Wharf Portland, Maine 04101  
(207) 772-6022 ARCHETYPE@ARCHETYPEPA.COM

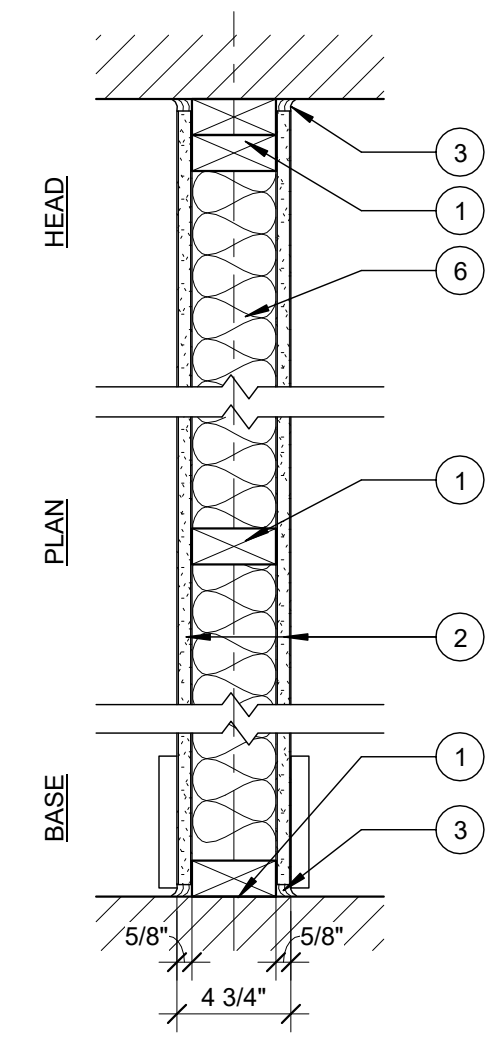
Project:  
**CLARK INSURANCE**  
1945 CONGRESS ST  
PORTLAND, ME 04102

Revisions:

Date: 06 OCT 2016  
Scale: 1 1/2" = 1'-0"

WALL TYPES

A4.00



**W1** 4 HR NON-BEARING FIRE BARRIER  
DESIGN NUMBER - UL U305

1. **WOOD FRAMING** - WOOD STUDS, NOM. 2 IN BY 4 IN., DOUBLE TOP PLATE AND SINGLE BASE PLATE, SEE STRUCTURAL FOR; STUD LAYOUT BRACING, AND FASTENERS.
2. **TYPE X GYPSUM BOARD** - (1) LAYER PROPRIETARY 5/8" TYPE X GYP. BD, EACH SIDE, APPLIED PERPENDICULAR TO STUDS WITH 1" TYPE S DRYWALL SCREWS 8" O.C. AT VERT. JNTS AND INTERMEDIATE STUDS AND 12" O.C. AT TOP AND BOTTOM RUNNER. SEE NOTES FOR GYP. BD, TYPE (STAGGER GYP. BD, JNTS 24" ON NON-FURRED SIDE.)
3. **SEALANT** - UL AND STC LISTED SEALANT, FULL PERIMETER BOTH SIDES.
4. **BLOCKING - (NOT SHOWN)** WOOD BLOCKING AS NEEDED
5. **TAPE AND COMPOUND - (NOT SHOWN)** VINYL DRY OR PREMIXED JOINT COMPOUND, APPLIED IN TWO COATS TO JOISTS AND SCREW HEADS, PAPER TAPE, 2 IN. WIDE, EMBEDDED IN FIRST LAYER OF COMPOUND OVER ALL JOINTS.
6. **SAFB SOUND INSULATION**

**W1** TYPICAL INTERIOR PARTITION - 4 3/4"  
1 1/2" = 1'-0"