

REV	DESCRIPTION	DATE
0	ISSUED FOR CONSTRUCTION	5-21-04

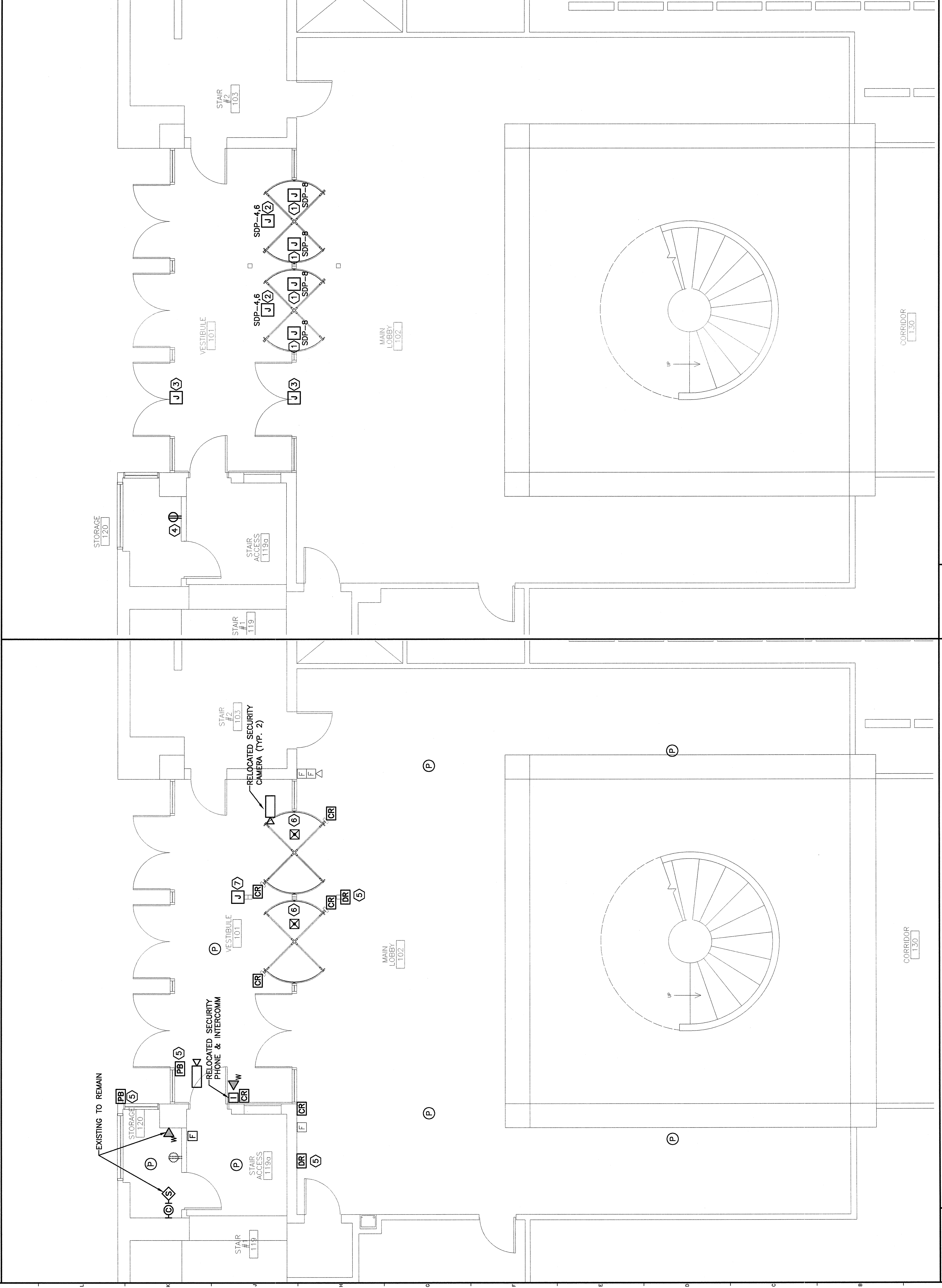
SCALE:	AS NOTED
PROJECT MANAGER:	JLH
JC/DRAWN BY:	RLJ/LAM
A/E OF RECORD:	DJT
CAD FILE:	E-102-03146
PROJECT NO.:	03146
DATE:	5-21-04
SHEET TITLE:	

NOTES:

- SEE SHEET E-001 FOR LEGEND AND GENERAL NOTES
- ALL PANELBOARD AND CIRCUIT BREAKERS FEEDING NEW AUTOMATIC DOORS AND RECEPTACLE ARE EXISTING. PROVIDE NEW 20A, 2 POLE CIRCUIT BREAKER IN PANELBOARD SDP TO FEED REVOLVING DOORS. COORDINATE WITH OWNER FOR LOCATIONS OF ELECTRICAL ROOMS.
- FOR CARD READERS SHOWN PROVIDE OUTLET BOX AND RACEWAY AS DIRECTED BY SECURITY SYSTEM INSTALLER (PROTECTION 1). WIRING TO BE INSTALLED BY SECURITY SYSTEM INSTALLER.

KEYED NOTES

- LOCATE JUNCTION BOX INSIDE UPPER CANOPY AND PROVIDE FLEXIBLE CONNECTION TO LIGHT FIXTURES SUPPLIED W/ DOOR. COORDINATE EXACT LOCATION OF ELECTRICAL CONNECTION WITH DOOR INSTALLER.
- LOCATE JUNCTION BOX INSIDE UPPER CANOPY AND PROVIDE FLEXIBLE CONNECTION TO MAIN CONTROL BOX SUPPLIED WITH DOOR. COORDINATE EXACT LOCATION OF ELECTRICAL CONNECTION WITH DOOR INSTALLER. WIRING TO BE 3#12 AWG & #12 GND.
- EXTEND WIRING FROM EXISTING AUTOMATIC DOOR OPERATORS TO NEW DOORS SHOWN. SEE SHEET E-101 FOR EXISTING LOCATION OF AUTOMATIC DOOR WIRING.
- CONNECT NEW RECEPTACLE TO SAME BRANCH CIRCUIT THAT FED RECEPTACLE REMOVED FROM EXISTING SECURITY OFFICE.
- PROVIDE BACK BOX FOR AUTOMATIC DOOR PUSH BUTTONS AND FOR AUTOMATIC DOOR RELEASE BUTTONS AT LOCATIONS REQUIRED. RUN ONE 2 CONDUCTOR SHIELDED #18 AWG CABLE FROM EACH PUSHBUTTON OR DOOR RELEASE TO DOOR OPERATOR. COORDINATE WITH DOOR INSTALLER FOR TERMINATION OF CONTROL WIRING.
- CONNECT SECURITY DOORS TO FIRE ALARM SYSTEM SO THAT DOORS COLLAPSE UPON ACTIVATION OF THE BUILDING FIRE ALARM SYSTEM.
PROVIDE EMPTY OUTLET BOX AND 1" CONDUIT TO ABOVE AN ACCESSIBLE CEILING FROM INTERCOM AND SECURITY CAMERA MOUNTED IN POST. COORDINATE WITH EQUIPMENT SUPPLIER FOR MOUNTING HEIGHTS AND BOX SIZE.



A7 POWER PLAN

A1 SYSTEMS PLAN

1/4"=1'-0" G001

1/4"=1'-0"