

REV	DESCRIPTION	DATE
0	ISSUED FOR CONSTRUCTION	5-21-04

GRAPHIC SCALE:  
0' 1'

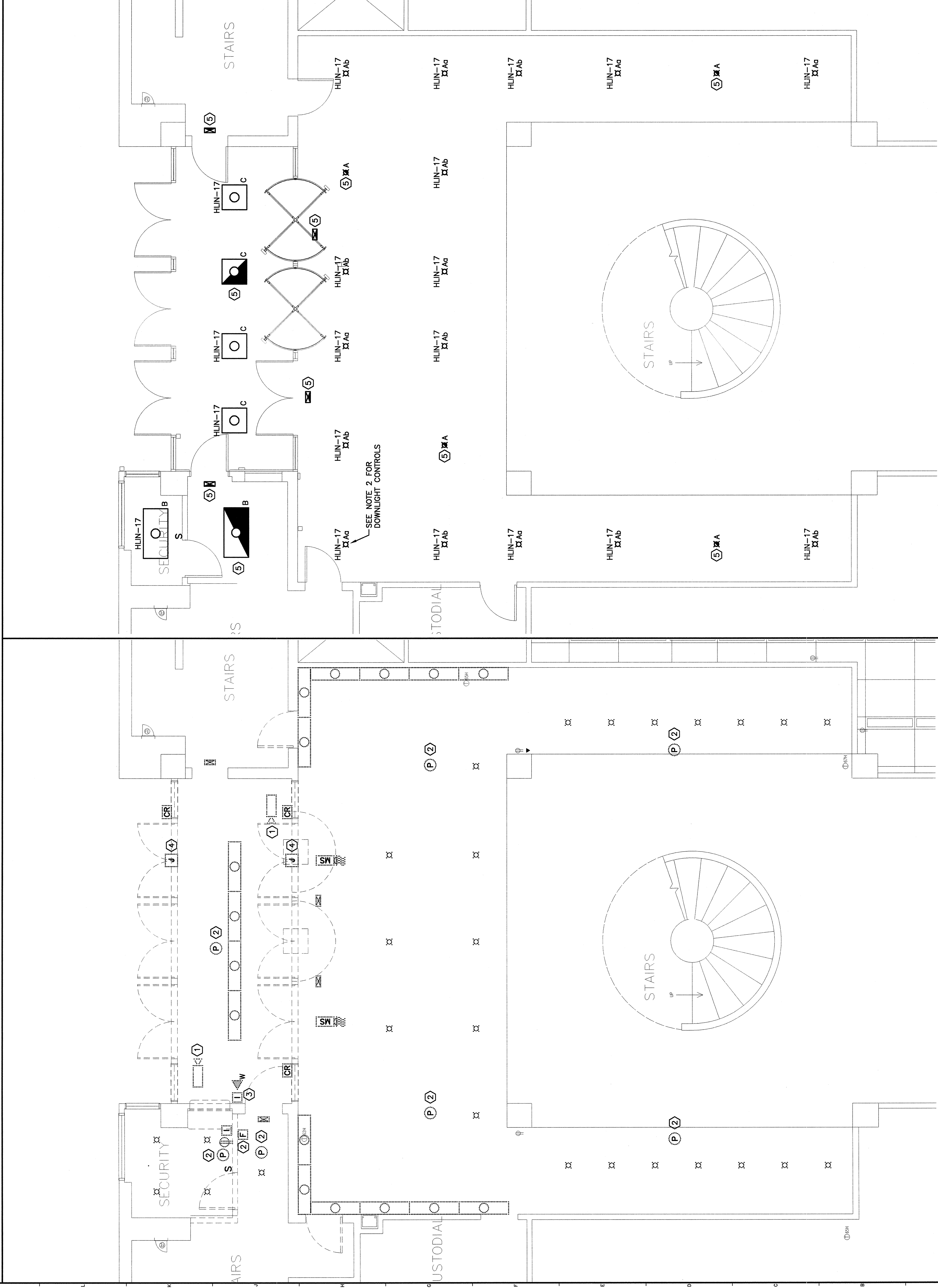
SCALE:	AS NOTED
PROJECT MANAGER:	JLH
JC/DRAWN BY:	RLJ/JAM
A/E OF RECORD:	DJT
CAD FILE:	E-101-03146
PROJECT NO.:	03146
DATE:	
SHEET TITLE:	

**NOTES:**

- SEE SHEET E-001 FOR LEGEND AND GENERAL NOTES
- LOBBY LIGHTS TO BE CONTROLLED BY TWO POINTS IN ANDOVER CONTROL SYSTEM. LIGHTS B0 TO BE CONTROLLED SEPARATELY FROM LIGHTS Bb. LIGHTS ON EMERGENCY CIRCUITS TO BE UNSWITCHED.
- ALL PANELBOARDS AND CIRCUIT BREAKERS FEEDING NEW LIGHTS AND RECEPTACLE ARE EXISTING. COORDINATE WITH OWNER FOR LOCATIONS OF ELECTRICAL ROOMS.

**KEYED NOTES:**

- REMOVE SECURITY CAMERA TO ALLOW FOR INSTALLATION OF SECURITY DOORS AND RE-INSTALL IN NEW CEILING GRID.
- RELOCATE FIRE ALARM INITIATING DEVICES AT LOCATIONS SHOWN ON SYSTEMS PLAN RE-WIRE DEVICES USING UL LISTED/FIRE ALARM MC CABLE.
- REMOVE INTERCOMM STATION AND SECURITY PHONE FROM EXISTING STOREFRONT & RE-INSTALL ON NEW STOREFRONT.
- DISCONNECT POWER FOR MOTORIZED DOORS AND RE-CONNECT BRANCH CIRCUIT TO NEW DOORS SHOWN ON E-102.
- CONNECT FIXTURES TO NEAREST EMERGENCY LIGHTING CIRCUIT. FIELD VERIFY CIRCUIT CAPACITY WITH AMMETER.



A7 LIGHTING PLAN

A1 DEMOLITION PLAN

1/4"=1'-0" G001

1/4"=1'-0"