

REV	DESCRIPTION	DATE
0	ISSUED FOR CONSTRUCTION	5-21-04

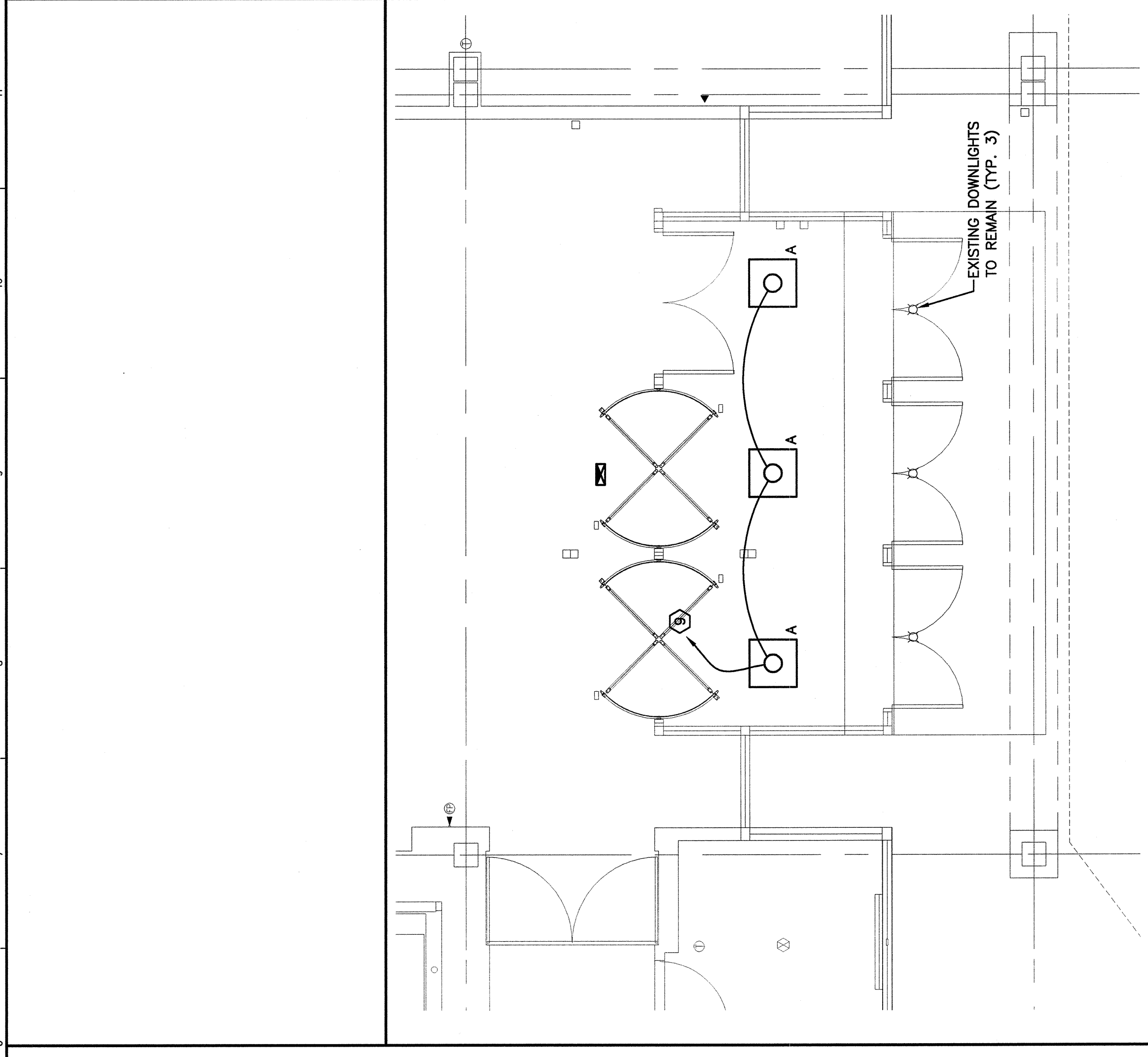
SCALE: AS NOTED
PROJECT MANAGER: J.J.H.
JC/DRAWN BY: ROL/TCM
A/E OF RECORD: DJT
CAD FILE: E-101-03145
PROJECT NO: 03145
DATE: 5-21-04
SHEET TITLE:

**NOTES:**

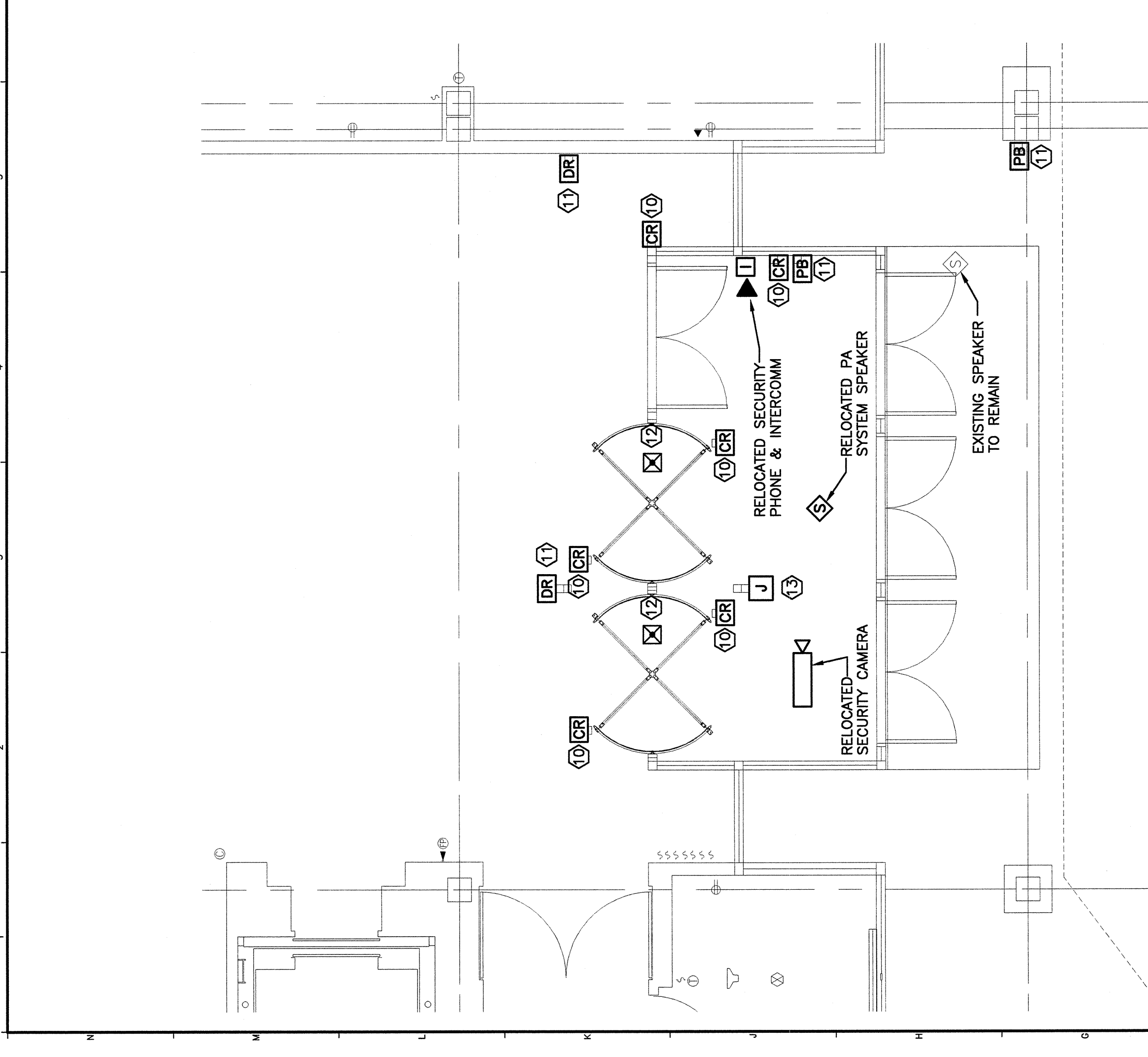
- SEE SHEET E-001 FOR LEGEND AND GENERAL NOTES
- FOR CARD READERS SHOWN PROVIDE OUTLET BOX AND RACEWAY AS DIRECTED BY SECURITY SYSTEM INSTALLER (PROTECTION 1). WIRING TO BE INSTALLED BY SECURITY SYSTEM INSTALLER.

**KEYED NOTES**

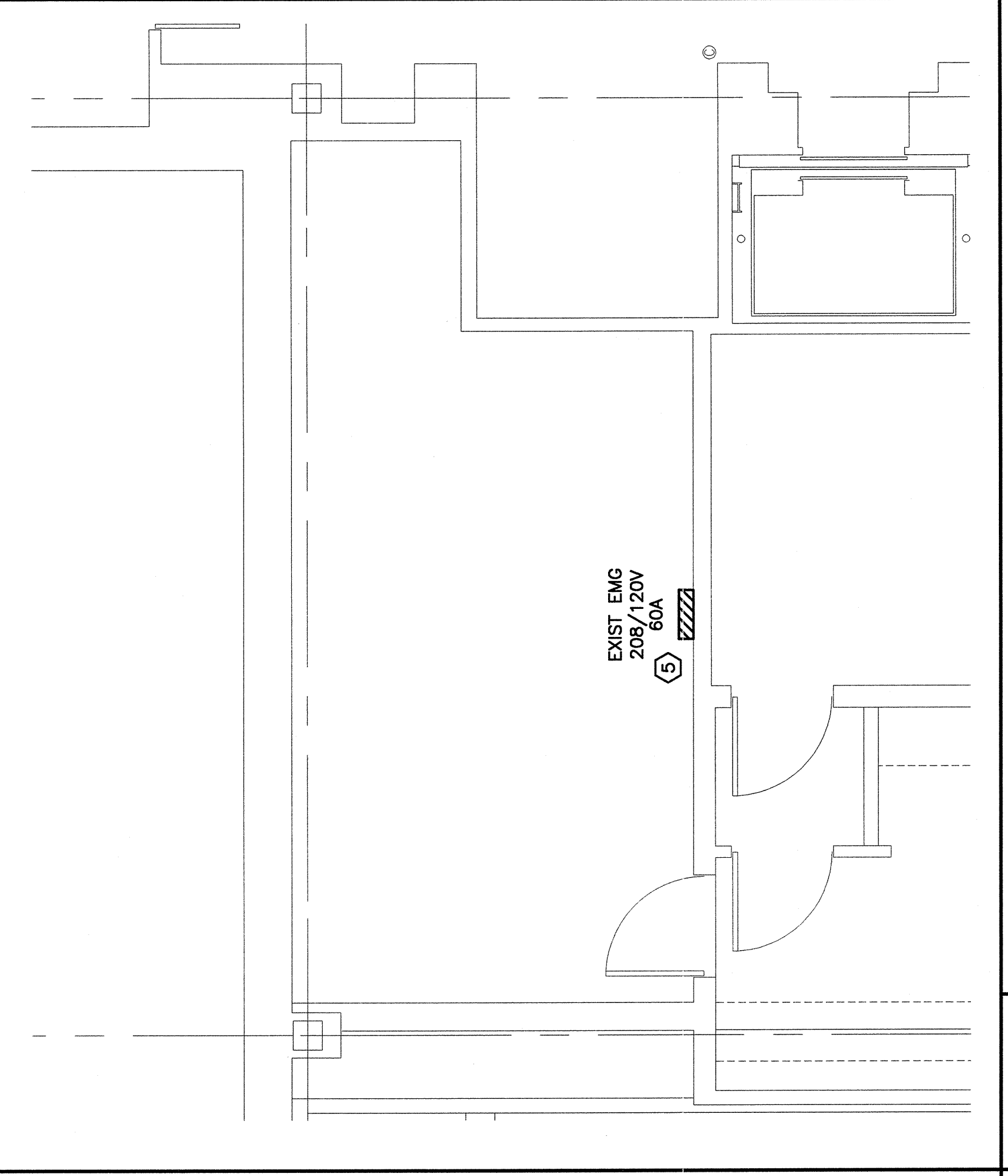
- REMOVE SECURITY CAMERA AND P.A. SYSTEM SPEAKER TO ALLOW FOR INSTALLATION OF SECURITY DOORS AND RE-INSTALL IN NEW CEILING GRID.
- REMOVE EXISTING DOWNLIGHTS AND RE-USE BRANCH CIRCUIT AND CONTROL SWITCH TO FEED NEW LIGHTS SHOWN ON LIGHTING PLAN.
- REMOVE INTERCOMM STATION AND SECURITY PHONE FROM EXISTING STOREFRONT & RE-INSTALL ON NEW STOREFRONT.
- DISCONNECT POWER FOR MOTORIZED DOORS AND RE-CONNECT BRANCH CIRCUIT TO NEW DOORS SHOWN ON POWER PLAN.
- INSTALL A NEW 20A SINGLE POLE CIRCUIT BREAKER & A 20A, TWO POLE CIRCUIT BREAKER IN EXISTING SQUARED PANEL BOARD TO FEED SECURITY DOOR LIGHTS AND MOTOR OPERATOR. BREAKERS TO HAVE A SHORT CIRCUIT RATING OF 10,000 AC.
- LOCATE JUNCTION BOX INSIDE UPPER CANOPY AND PROVIDE FLEXIBLE CONNECTION TO LIGHT FIXTURES SUPPLIED W/ DOOR. COORDINATE EXACT LOCATION OF ELECTRICAL CONNECTION WITH DOOR INSTALLER. WIRING TO BE 3#12AWG & #12GND.
- LOCATE JUNCTION BOX INSIDE UPPER CANOPY AND PROVIDE FLEXIBLE CONNECTION TO MAIN CONTROL BOX SUPPLIED WITH DOOR. COORDINATE EXACT LOCATION OF ELECTRICAL CONNECTION WITH DOOR INSTALLER. WIRING TO BE 3#12AWG & #12GND.
- EXTEND WIRING FROM EXISTING AUTOMATIC DOOR OPERATORS TO NEW DOORS SHOWN.
- CONNECT EXISTING BRANCH CIRCUIT TO NEW LIGHT FIXTURES SHOWN.
- PROVIDE OUTLET BOX AND RACEWAY FOR CARD READERS AS REQUIRED. COORDINATE ALL WORK WITH SECURITY SYSTEM INSTALLER.
- PROVIDE BACK BOX FOR AUTOMATIC DOOR PUSH BUTTONS AND FOR AUTOMATIC DOOR RELEASE BUTTONS AT LOCATIONS REQUIRED. RUN ONE 2 CONDUCTOR SHIELDED #18 AWG CABLE FROM EACH PUSHBUTTON OR DOOR RELEASE TO DOOR OPERATOR. COORDINATE WITH DOOR INSTALLER FOR TERMINATION OF CONTROL WIRING.
- CONNECT SECURITY DOORS TO FIRE ALARM SYSTEM SO THAT DOORS COLLAPSE UPON ACTIVATION OF THE BUILDING FIRE ALARM SYSTEM.
- PROVIDE EMPTY OUTLET BOX AND 1" CONDUIT TO ABOVE AN ACCESSIBLE CEILING FROM INTERCOM AND SECURITY CAMERA MOUNTED IN POST. COORDINATE WITH EQUIPMENT SUPPLIER FOR MOUNTING HEIGHTS AND BOX SIZE.



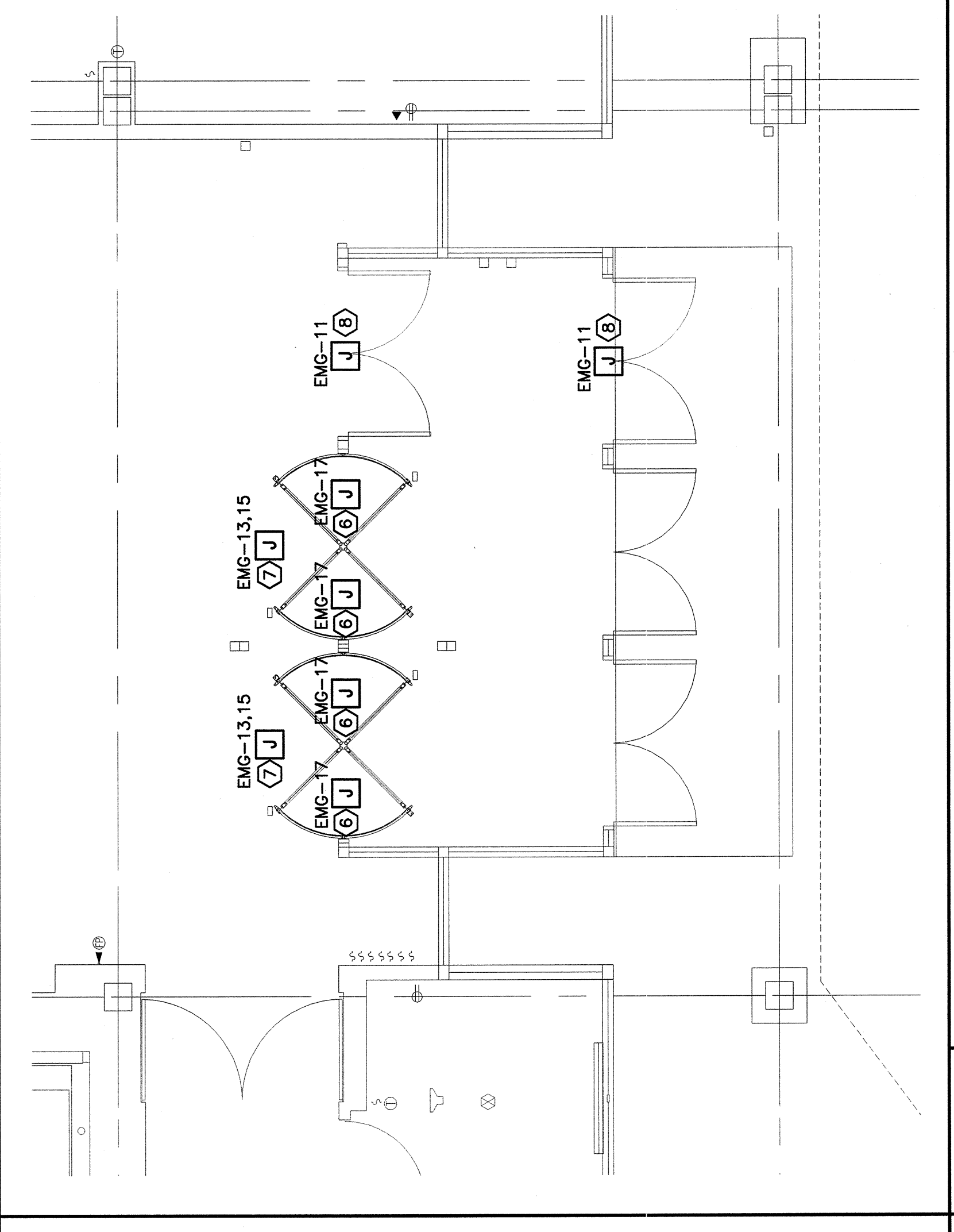
F6 REFLECTED CEILING PLAN  
 1/4"=1'-0" G1001



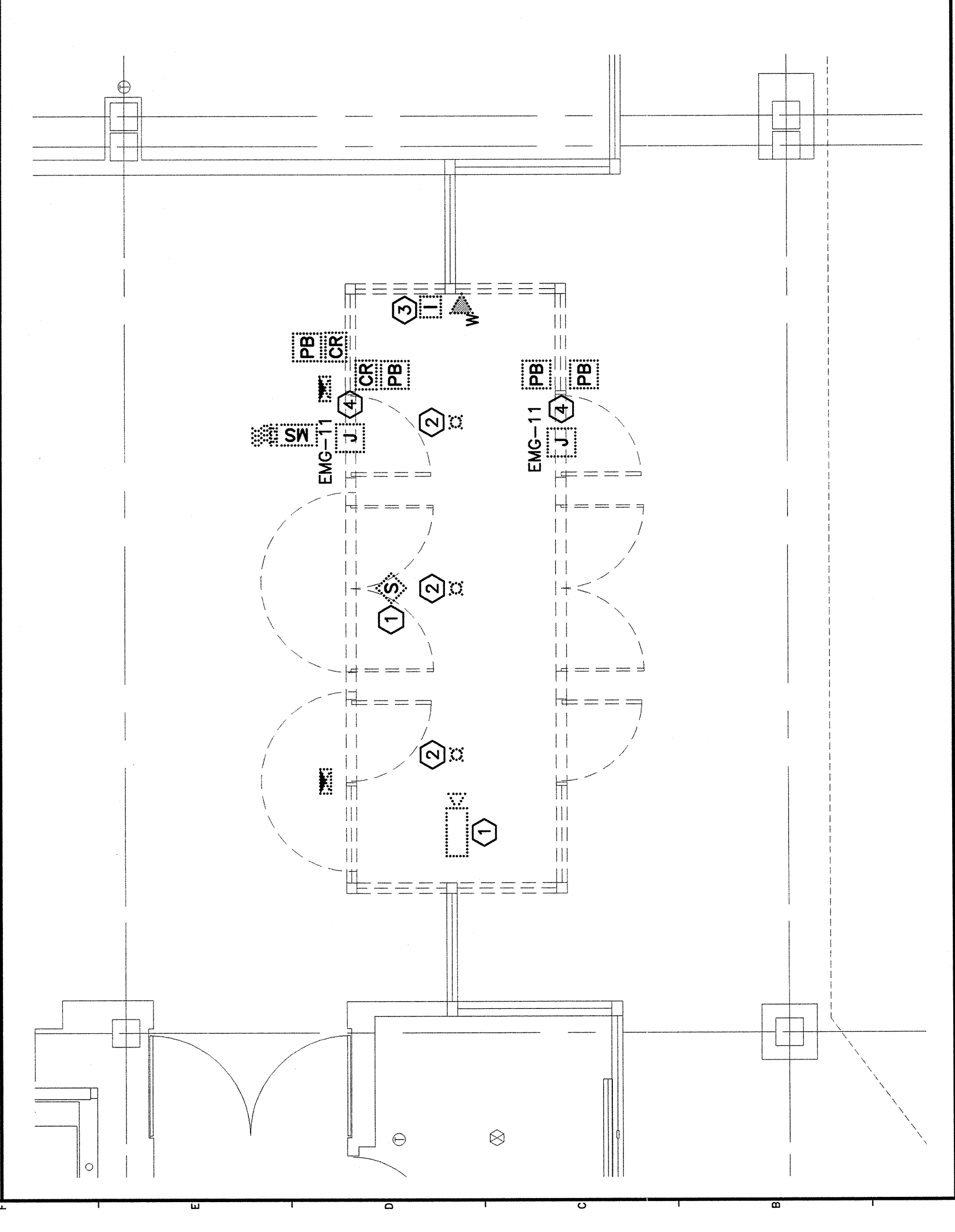
F1 REFLECTED CEILING PLAN  
 1/4"=1'-0" G1001



A12 FLOOR PLAN  
 1/4"=1'-0" G1001



A6 FLOOR PLAN  
 1/4"=1'-0" G1001



A3 DEMOLITION PLAN  
 1/4"=1'-0" G1001