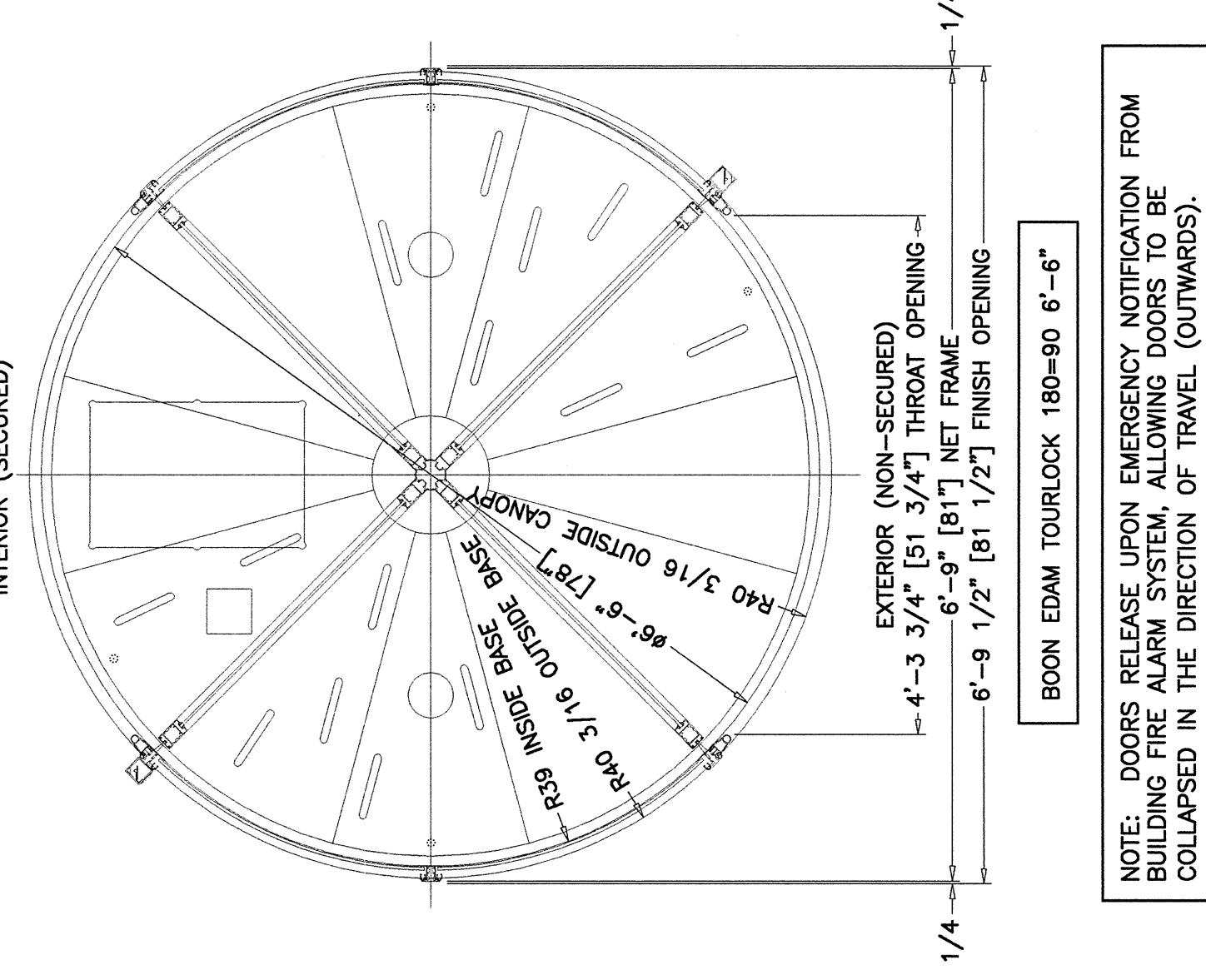
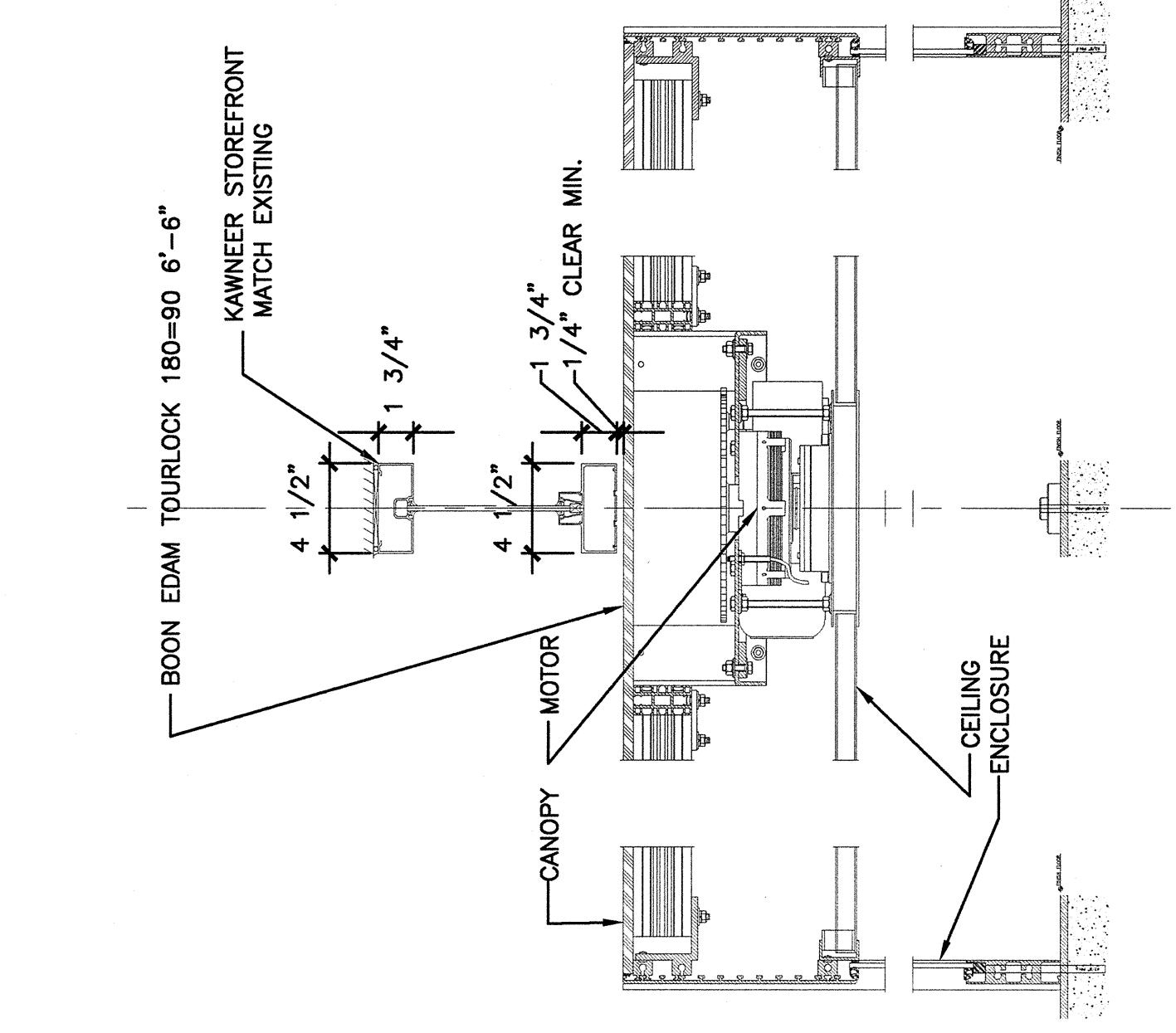


GENERAL NOTES

- 60 MINUTE RATING, PANIC DEVICE, CLOSER [1, 3 & 8]
- 60 MINUTE RATING, LOCKSET, CLOSER [2]
- PANIC DEVICE, MOTOR OPERATOR, CLOSER, PULLS, OPERATING BUTTIONS [4]
- PANIC DEVICE, CLOSER, PULLS [5 & 6]
- 60 MINUTE RATING, PANIC DEVICE (EXISTING CLOSER?) [7]
- ALARMED PANIC DEVICE (DETEX. W/CONTACTS), NO PULL ON VESTIBULE SIDE, CLOSER [9]
- REVOLVING DOORS, CARD READERS [10 & 11]
- PANIC DEVICE, MOTOR OPERATOR, CARD READERS, CLOSER, NO PULL ON VESTIBULE SIDE [12]

DOOR SCHEDULE REMARKS

- 1-1/2" WIDE FRAME TO FIT EXISTING (PARTIAL) PRE-CAST CONCRETE OPENING.
- MOTOR OPERATOR AND REMOVABLE MULLION. SEE PLAN FOR DESIGNATION OF ACTIVE LEAF.

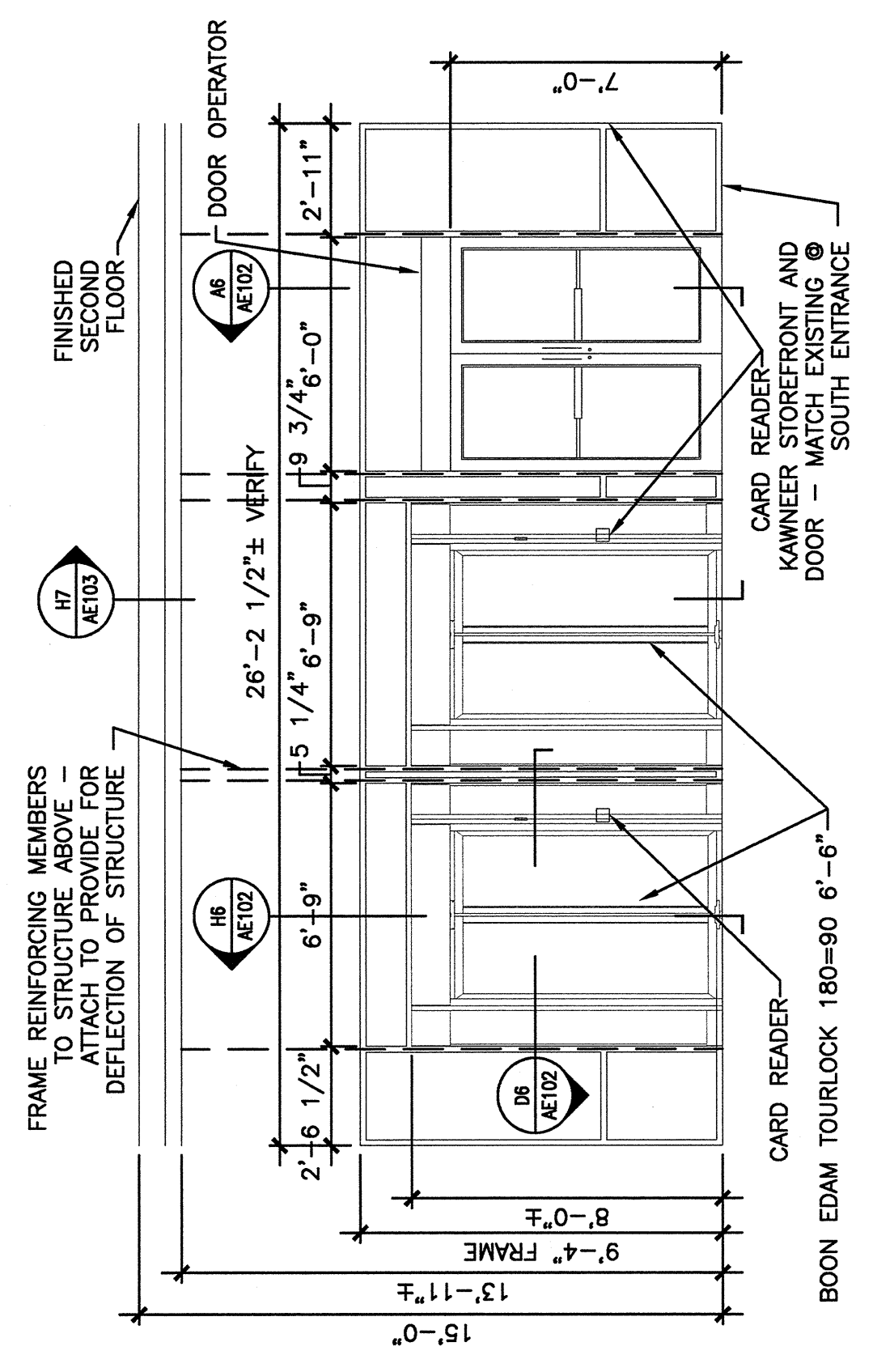


H6 SECTION

1 1/2"=1'-0"

H1 ENLARGED PLAN

3/4"=1'-0"

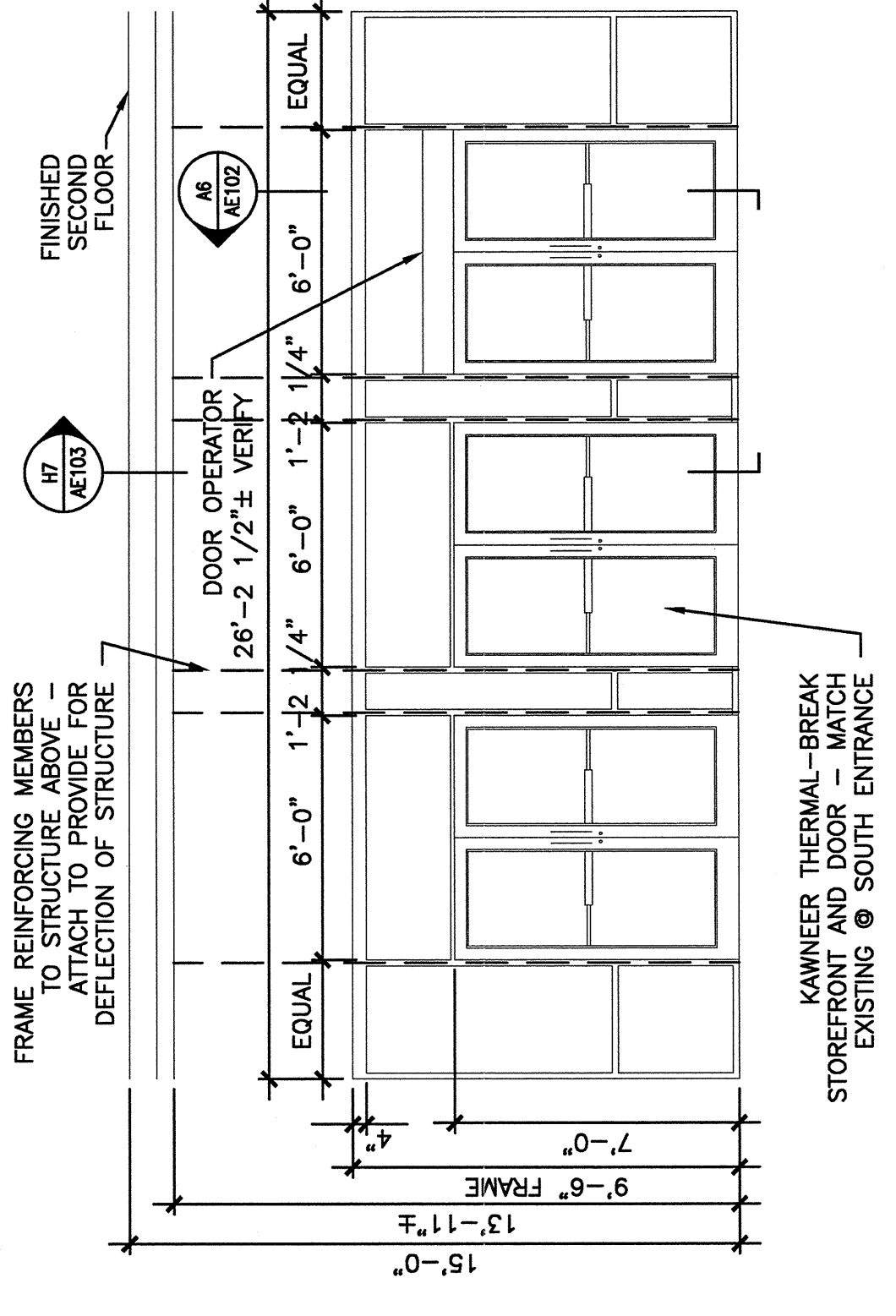


D6 DETAIL

1 1/2"=1'-0"

D1 ELEVATION

1/4"=1'-0"

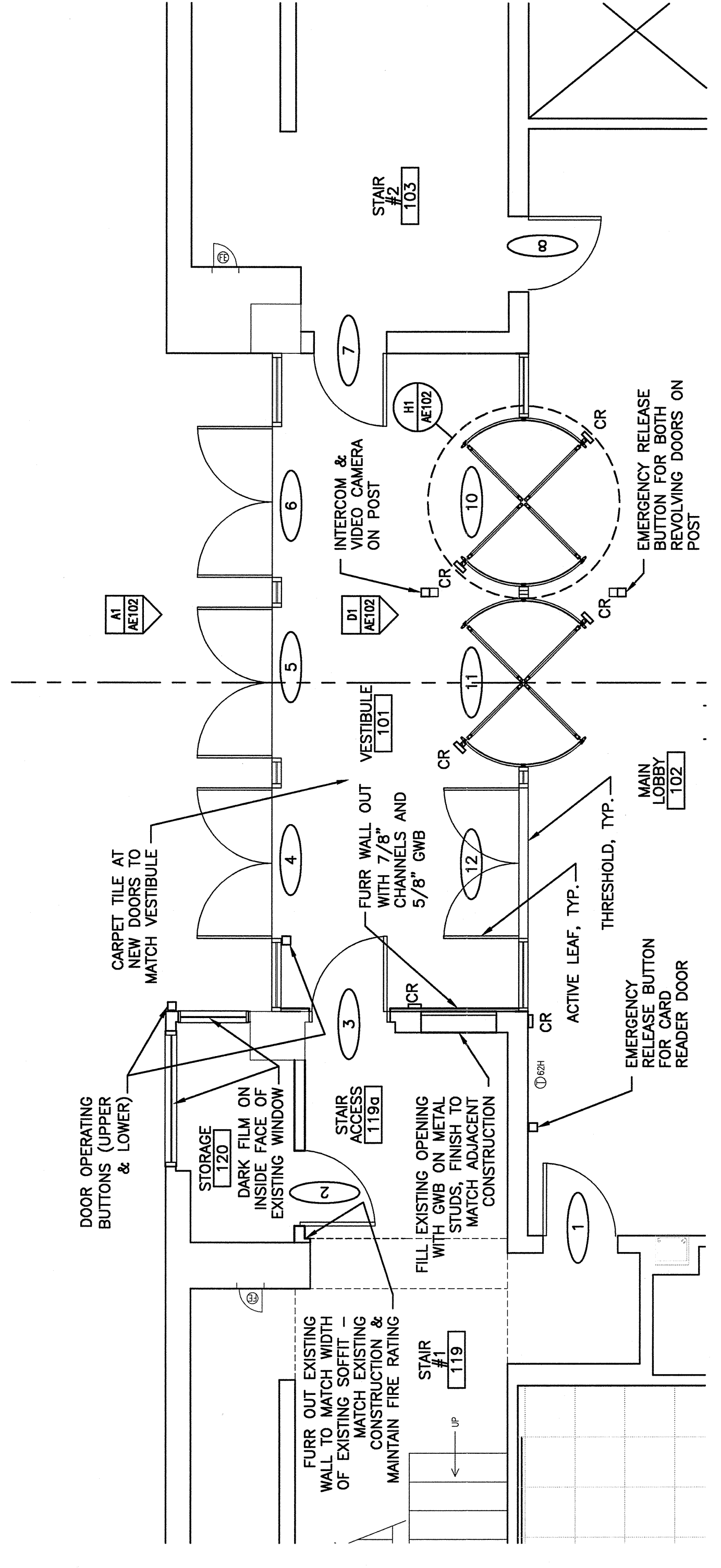


A1 ELEVATION

1/4"=1'-0"

DOOR SCHEDULE

DOOR NUMBER	DOOR		GLAZING		FRAME		FIRE RATING (MIN.)	HWS	SILL	JAMB	REMARKS
	SIZE	MATERIAL	ELEVATION	ELEVATION	HEAD	HEAD					
1	3'-0" x 7'-0" x 1-3/4"	HM	FLUSH	1	1	1	60	1			EXISTING FRAME
2	3'-0" x 7'-0" x 1-3/4"	HM	FLUSH	1	1	2	60	2			
3	3'-0" x 7'-0" x 1-3/4"	HM	FLUSH	2	2	1	60	1			REMARK 1
4	(2) 3'-0" x 7'-0" x 1-3/4"	AL	A1/AE102	TEMP	A1/AE102	3	4	3			MOTOR OPERATOR
5	(2) 3'-0" x 7'-0" x 1-3/4"	AL	A1/AE102	TEMP	A1/AE102	4	4	4			
6	(2) 3'-0" x 7'-0" x 1-3/4"	AL	A1/AE102	TEMP	A1/AE102	4	4	4			
7	(3'-0" x 7'-0" x 1-3/4")	(HM)	FLUSH	1	1	5	60	5			EXISTING DOOR & FRAME
8	3'-0" x 7'-0" x 1-3/4"	HM	FLUSH	1	1	1	60	1			EXISTING FRAME
9	(NOT USED)										
10	6'-6" x 7'-0" REVOLVING	AL	D1/AE102	TEMP	D1/AE102	7		7			
11	6'-6" x 7'-0" REVOLVING	AL	D1/AE102	TEMP	D1/AE102	7		7			
12	(2) 3'-0" x 7'-0" x 1-3/4"	AL	D1/AE102	TEMP	D1/AE102	8		8			REMARK 2



A9 PARTIAL FLOOR PLAN

1/4"=1'-0"

H6 SECTION

1 1/2"=1'-0"

D6 DETAIL

1 1/2"=1'-0"

A6 SECTION

1 1/2"=1'-0"

A1 ELEVATION

1/4"=1'-0"