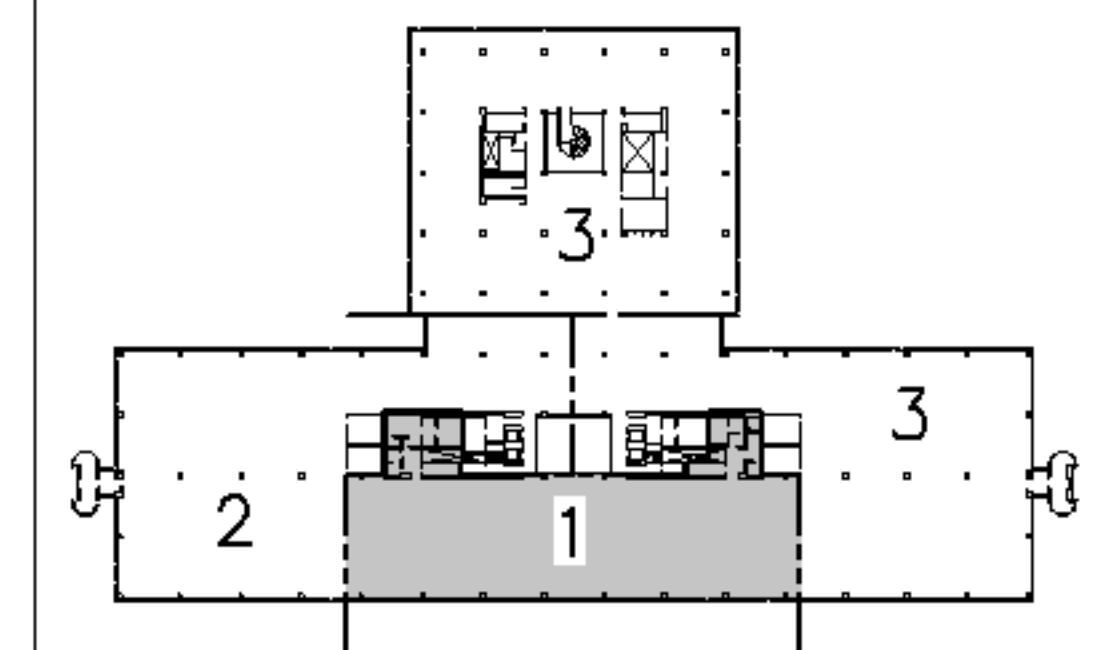


**NOTE:**  
 1. SEE SHEET E-001 FOR LEGEND AND GENERAL NOTES.

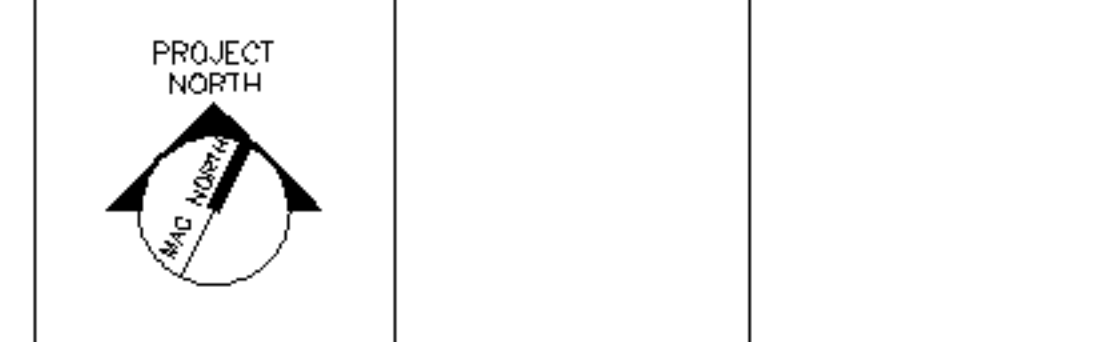
- KEYED NOTES:**
- ① USE EXISTING 20A, 1P SPARE CIRCUIT BREAKERS IN EXISTING PANELBOARDS TO FEED NEW DEVICES SHOWN.
  - ② WIRING FOR VAV BOXES TO BE FED VIA CONTROL POWER TRANSFORMER FURNISHED BY DIVISION 15000. WIRING TO BE 2#12 AWG & #12 GND, 3/4" C.
  - ③ (NOT USED)
  - ④ PROVIDE HARD WIRED ELECTRICAL CONNECTION FOR NEW ELECTRIC WATER COOLER. COORDINATE LOCATION OF ELECTRICAL CONNECTION WITH PLUMBING CONTRACTOR.



F18		KEY PLAN
NOT TO SCALE		
0	ISSUED FOR CONSTRUCTION	3-10-05
REV.	DESCRIPTION	DATE

**ISSUED FOR CONSTRUCTION**  
**3-10-05**

CURRENT ISSUE STATUS:



**ARCHITECTURE ENGINEERING PLANNING**  
 SMRT  
 144 Fore Street, P.O. Box 618  
 Portland, Maine 04104  
 Tel. (207) 772-3846  
 Fax. (207) 772-1070

UnumProvident HO-1  
 3rd FLOOR OFFICE RENOVATIONS  
 PORTLAND, ME.

**PHASE I  
 POWER PLAN**

SHEET TITLE:	
SCALE: 1/8"=1'-0"	DATE: 3-10-05
PROJECT MANAGER: JLH	GRAPHIC SCALE: 0" 1"
JOB CAP/DRAWN: CEB/LAM	SHEET No.
A/E OF RECORD: DJT	EP101
SMRT CAD FILE: EP101-05004	PROJECT No. 05004

A1 FLOOR PLAN  
 1/8"=1'-0"