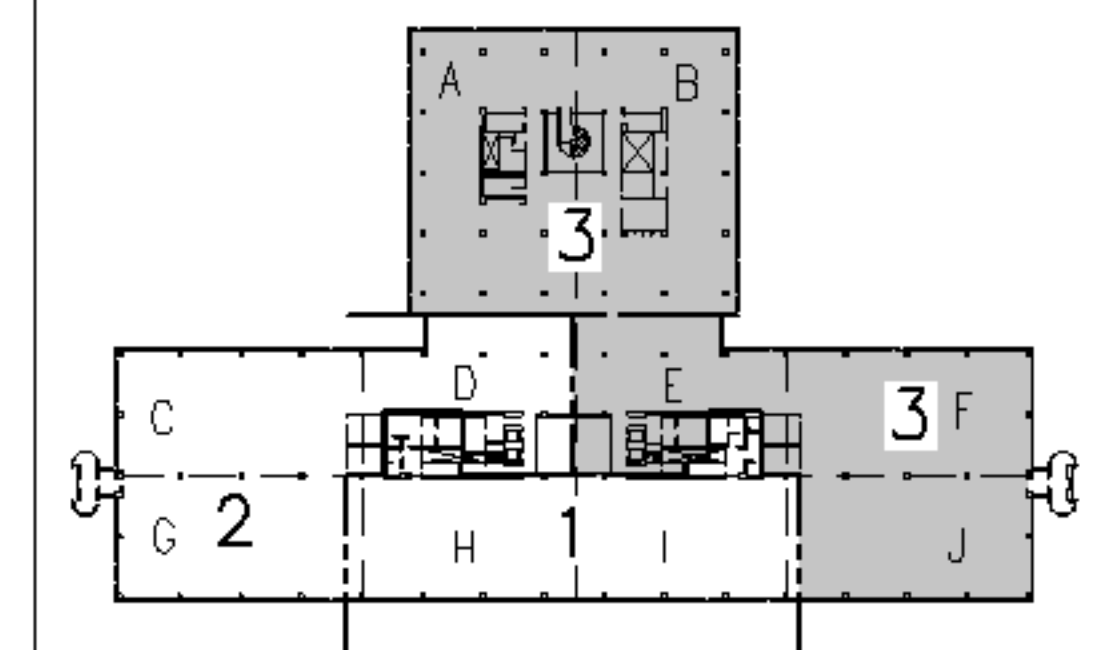


**NOTES:**  
 1. SEE SHEET E-001 FOR LEGEND AND GENERAL NOTES.

- KEYED NOTES:**
- ① USE 20 AMP. SINGLE POLE SPARE CIRCUIT BREAKERS IN EXISTING PANELBOARD TO FEED NEW LIGHTING AS INDICATED.
  - ② FURNISH & INSTALL LIGHTING CONTROL RELAYS TO CONTROL THE THREE DIFFERENT FIXTURE GROUPS (a,b,c) LIGHTS TO BE CONTROLLED (SWITCHED) BY ANDOVER CONTROL SYSTEM. EACH BRANCH CIRCUIT TO BE CONTROLLED AS A SEPARATE ZONE AND BE WIRED SO THAT EVERY THIRD 4" SECTION TO SWITCH SEPARATELY TO ALLOW FOR THREE DIFFERENT LIGHT LEVELS.
  - ③ EXISTING BATHROOM LIGHTING SHALL BE CONNECTED TO LIFE SAFETY PANELBOARD HEN3 CIRCUIT #6. RE-USE EXISTING OCCUPANCY SENSORS (OR PROVIDE NEW IN SPACES SENSORS ARE NOT CURRENTLY INSTALLED) IN EACH BATHROOM SHALL PROVIDE LIGHTING CONTROL WITHIN THE SPACE.
  - ④ PROVIDE OCCUPANCY SENSOR FOR CONTROL OF CONFERENCE ROOM LIGHTS. OCCUPANCY SENSOR TO BE WIRED IN SERIES WITH DUAL LEVEL SWITCHES.



F18	KEY PLAN	
NOT TO SCALE		
0	ISSUED FOR CONSTRUCTION	3-10-05
REV.	DESCRIPTION	DATE
<b>ISSUED FOR CONSTRUCTION</b>		
<b>3-10-05</b>		
CURRENT ISSUE STATUS:		

PROJECT NORTH

ARCHITECTURE ENGINEERING PLANNING  
 SMRT  
 144 Fore Street, P.O. Box 618  
 Portland, Maine 04104  
 Tel. (207) 772-3846  
 Fax. (207) 772-1070

UnumProvident HO-1 3rd FLOOR OFFICE RENOVATIONS PORTLAND, ME.	
PROJECT: <b>PHASE III - PARTIAL LIGHTING PLAN</b>	
SHEET TITLE:	
SCALE: 1/8"=1'-0"	DATE: 3-10-05
PROJECT MANAGER: JLH	GRAPHIC SCALE: 0" 1"
JOB CAP/DRAWN: CEB/LAM	
A/E OF RECORD: DJT	SHEET No.
SMRT CAD FILE: EL104-05004	<b>EL104</b>
PROJECT No. 05004	

A1 FLOOR PLAN  
 1/8"=1'-0"