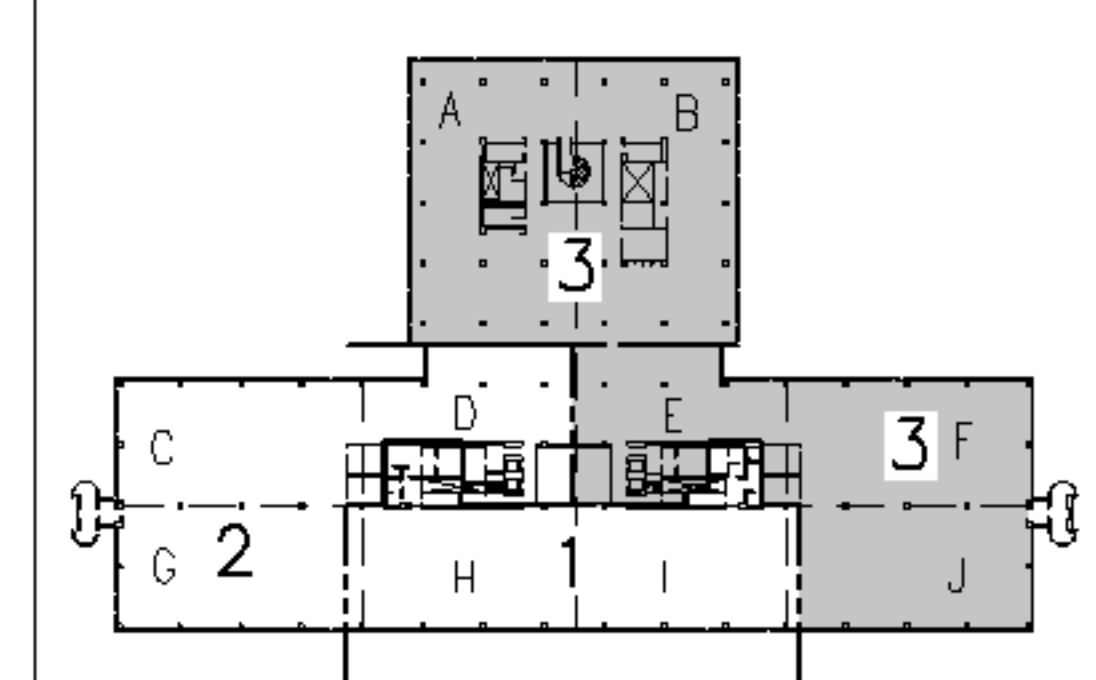


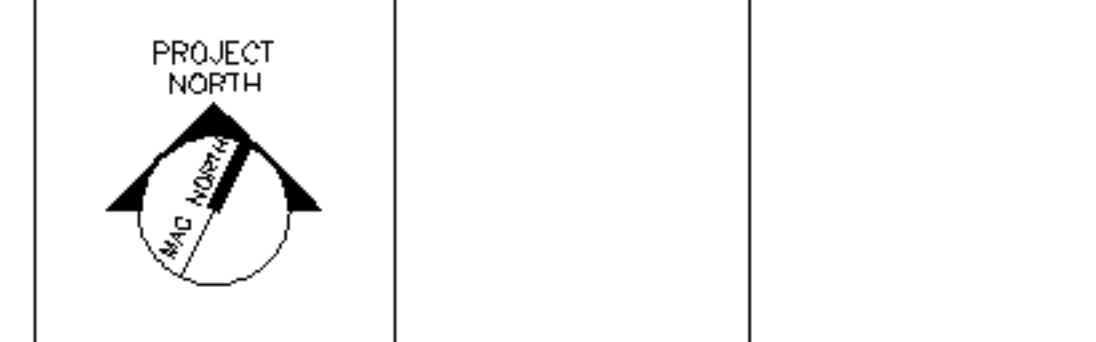
- NOTES:**
- SEE SHEET E-001 FOR LEGEND AND GENERAL NOTES.
 - SEE SHEET EL104 FOR LOCATION OF PANELBOARD HEN3.

- KEYED NOTES:**
- USE 20 AMP. SINGLE POLE SPARE CIRCUIT BREAKERS IN EXISTING PANELBOARD TO FEED NEW LIGHTING AS INDICATED.
 - FURNISH & INSTALL LIGHTING CONTROL RELAYS TO CONTROL THE THREE DIFFERENT LIGHTING GROUPS (a,b,c) LIGHTS TO BE CONTROLLED (SWITCHED) BY ANDOVER CONTROL SYSTEM. EACH BRANCH CIRCUIT TO BE CONTROLLED AS A SEPARATE ZONE AND BE WIRED SO THAT EVERY THIRD 4' SECTION TO SWITCH SEPARATELY TO ALLOW FOR THREE DIFFERENT LIGHT LEVELS.
 - EXISTING BATHROOM LIGHTING SHALL BE CONNECTED TO LIFE SAFETY PANELBOARD HEN3 CIRCUIT #8. RE-USE EXISTING OCCUPANCY SENSORS (OR PROVIDE NEW IN SPACES SENSORS ARE NOT CURRENTLY INSTALLED) IN EACH BATHROOM SHALL PROVIDE LIGHTING CONTROL WITHIN THE SPACE.
 - PROVIDE OCCUPANCY SENSOR FOR CONTROL OF CONFERENCE ROOM LIGHTS. OCCUPANCY SENSOR TO BE WIRED IN SERIES WITH DUAL LEVEL SWITCHES.



F18		KEY PLAN	
NOT TO SCALE			
0	ISSUED FOR CONSTRUCTION	3-10-05	
REV.	DESCRIPTION	DATE	

ISSUED FOR CONSTRUCTION
3-10-05



ARCHITECTURE ENGINEERING PLANNING
 SMRT
 144 Fore Street, P.O. Box 618
 Portland, Maine 04104
 Tel. (207) 772-3846
 Fax. (207) 772-1070

UnumProvident HO-1
 3rd FLOOR OFFICE RENOVATIONS
 PORTLAND, ME.

PROJECT: **PHASE III - PARTIAL LIGHTING PLAN**

SHEET TITLE:			
SCALE:	1/8"=1'-0"	DATE:	3-10-05
PROJECT MANAGER:	JLH	GRAPHIC SCALE:	0" 1"
JOB CAP/DRAWN:	CEB/BOG	A/E OF RECORD:	FWJ
SMRT CAD FILE:	EL103-05004	SHEET No.	EL103
PROJECT No.	05004		

A1 FLOOR PLAN
 1/8"=1'-0"