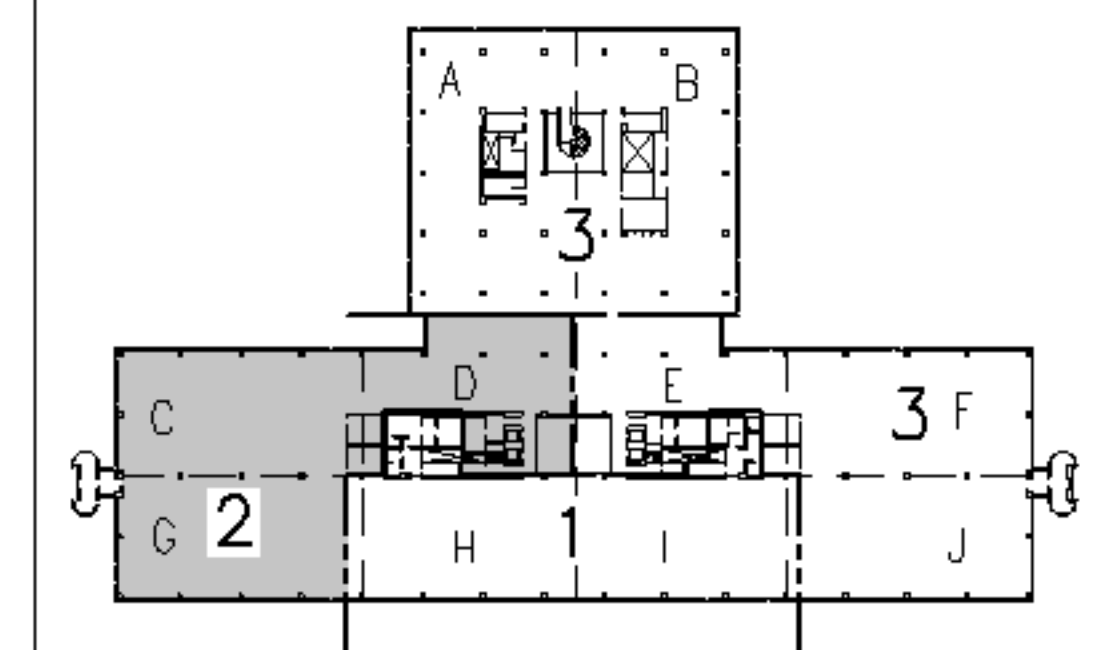


NOTES:

- SEE SHEET E-001 FOR LEGEND AND GENERAL NOTES.
- SEE SHEET EL104 FOR LOCATION OF PANELBOARD HEN3.

KEYED NOTES:

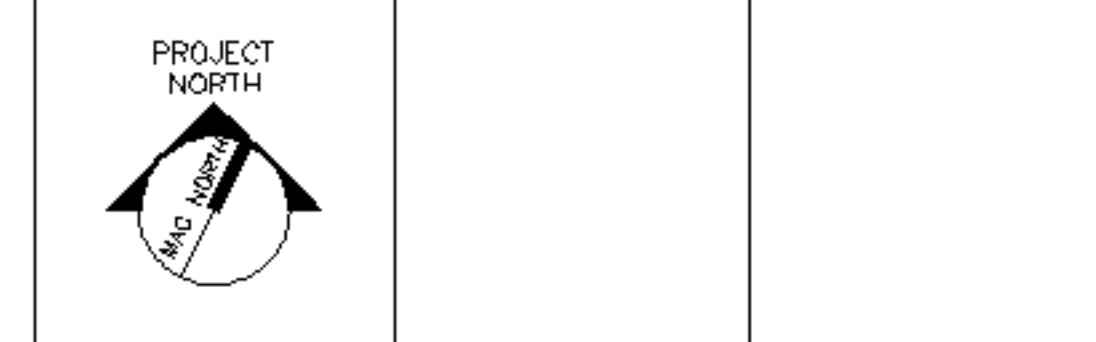
- USE 20 AMP. SINGLE POLE SPARE CIRCUIT BREAKERS IN EXISTING PANELBOARD TO FEED NEW LIGHTING AS INDICATED.
- FURNISH & INSTALL LIGHTING CONTROL RELAYS TO CONTROL THE THREE DIFFERENT FIXTURE GROUPS (a,b,c) LIGHTS TO BE CONTROLLED (SWITCHED) BY ANDOVER CONTROL SYSTEM. EACH BRANCH CIRCUIT TO BE CONTROLLED AS A SEPARATE ZONE AND BE WIRED SO THAT EVERY THIRD 4" SECTION TO SWITCH SEPARATELY TO ALLOW FOR THREE DIFFERENT LIGHT LEVELS.
- EXISTING BATHROOM LIGHTING SHALL BE CONNECTED TO LIFE SAFETY PANELBOARD HEN3 CIRCUIT #6. RE-USE EXISTING OCCUPANCY SENSORS (OR PROVIDE NEW IN SPACES SENSORS ARE NOT CURRENTLY INSTALLED) IN EACH BATHROOM SHALL PROVIDE LIGHTING CONTROL WITHIN THE SPACE.
- PROVIDE OCCUPANCY SENSOR FOR CONTROL OF CONFERENCE ROOM LIGHTS. OCCUPANCY SENSOR TO BE WIRED IN SERIES WITH DUAL LEVEL SWITCHES.



F18	KEY PLAN	
NOT TO SCALE		
0	ISSUED FOR CONSTRUCTION	3-10-05
REV.	DESCRIPTION	DATE

ISSUED FOR CONSTRUCTION
3-10-05

CURRENT ISSUE STATUS:



ARCHITECTURE ENGINEERING PLANNING
SMRT
144 Fore Street, P.O. Box 618
Portland, Maine 04104
Tel. (207) 772-3846
Fax. (207) 772-1070

UnumProvident HO-1
3rd FLOOR OFFICE RENOVATIONS
PORTLAND, ME.

PROJECT:
PHASE II LIGHTING PLAN

SHEET TITLE:	PHASE II LIGHTING PLAN	
SCALE:	1/8"=1'-0"	DATE: 3-10-05
PROJECT MANAGER:	JLH	GRAPHIC SCALE: 0" 1"
JOB CAP/DRAWN:	CEB/LAM	
A/E OF RECORD:	DJT	SHEET No.
SMRT CAD FILE:	EL102-05004	EL102
PROJECT No.	05004	

A1 FLOOR PLAN
1/8"=1'-0"