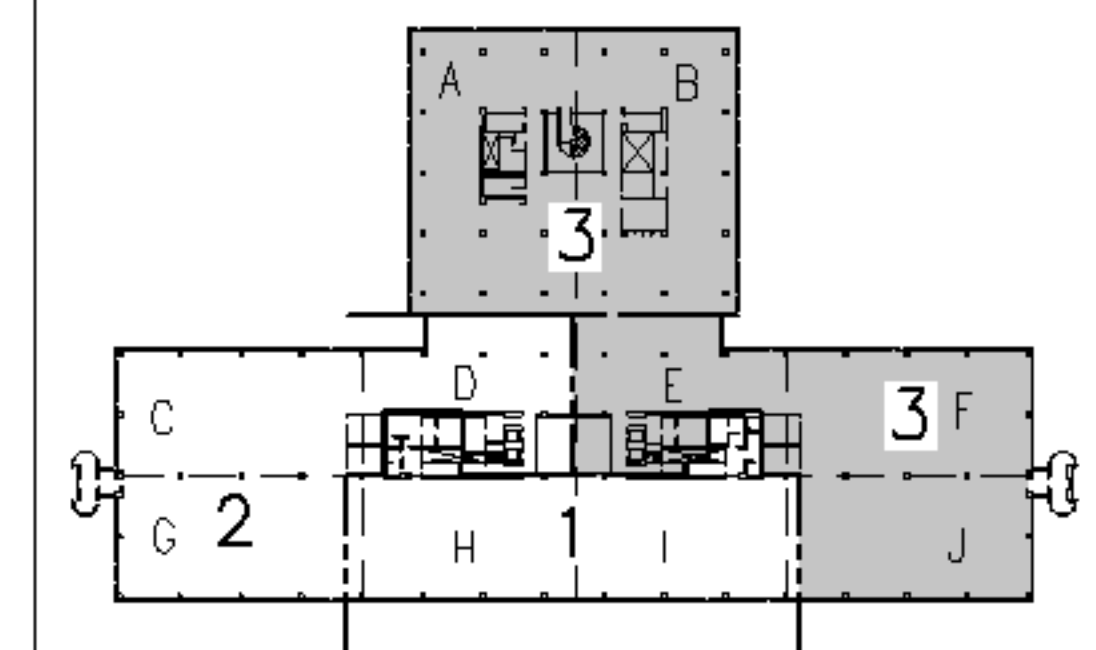
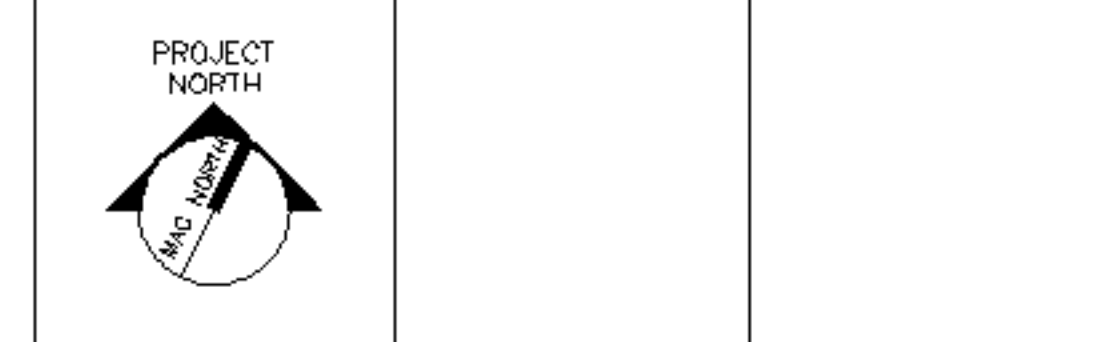


- NOTES:**
1. SEE SHEET E-001 FOR LEGEND AND GENERAL NOTES.
 2. REMOVAL OF EQUIPMENT & DEVICES TO INCLUDE REMOVAL OF ALL CONDUIT & WIRING BACK TO SOURCE UNLESS NOTED OTHERWISE.
 3. REMOVE PLENUM RATED CABLE FOR SMOKE DETECTORS AND SMOKE DETECTORS TO ALLOW CEILING GRID REPLACEMENT. RE-INSTALL AT LOCATIONS SHOWN ON EY104.
 4. REMOVE ANY ABANDONED CONDUIT AND WIRING FOUND ABOVE CEILING.
 5. REMOVE EXISTING CLOCKS AND INSTALL AT +84" AFF AS INDICATED ON SHEET EY104.



F18		KEY PLAN
NOT TO SCALE		
0	ISSUED FOR CONSTRUCTION	3-10-05
REV.	DESCRIPTION	DATE

ISSUED FOR CONSTRUCTION
3-10-05



ARCHITECTURE ENGINEERING PLANNING
 SMRT
 144 Fore Street, P.O. Box 618
 Portland, Maine 04104
 Tel. (207) 772-3846
 Fax. (207) 772-1070

UnumProvident HO-1
 3rd FLOOR OFFICE RENOVATIONS
 PORTLAND, ME.

PROJECT: **PHASE III - PARTIAL DEMOLITION PLAN**

SHEET TITLE:		DATE:	3-10-05
SCALE:	1/8"=1'-0"	GRAPHIC SCALE:	0" 1"
PROJECT MANAGER:	JLH	SHEET No.	ED104
JOB CAP/DRAWN:	CEB/LAM	PROJECT No.	05004
A/E OF RECORD:	DJT		
SMRT CAD FILE:	ED104-05004		

A1 FLOOR PLAN
 1/8"=1'-0"